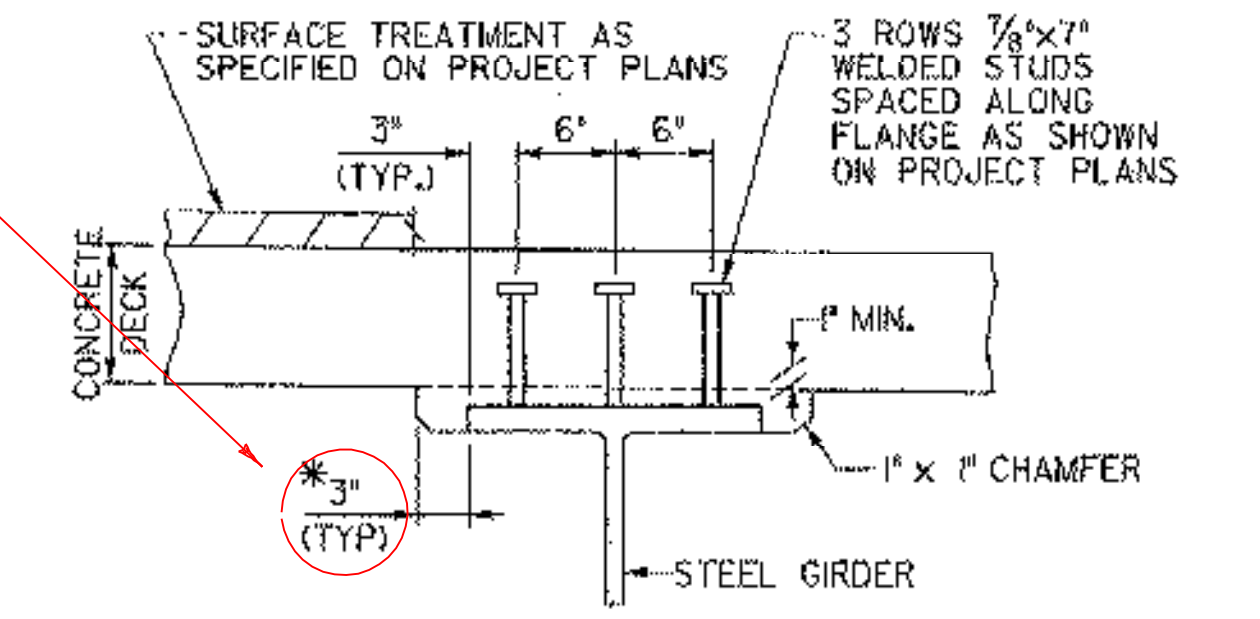


**TYPICAL BRIDGE SECTION**

SCALE 1/2" = 1'-0"

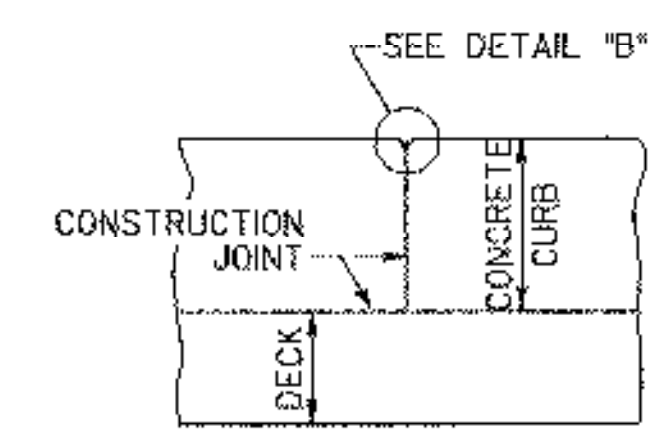
W0#3 BORG HANGAR SYSTEM APPROVED; ELIMINATES 3" HAUNCH.



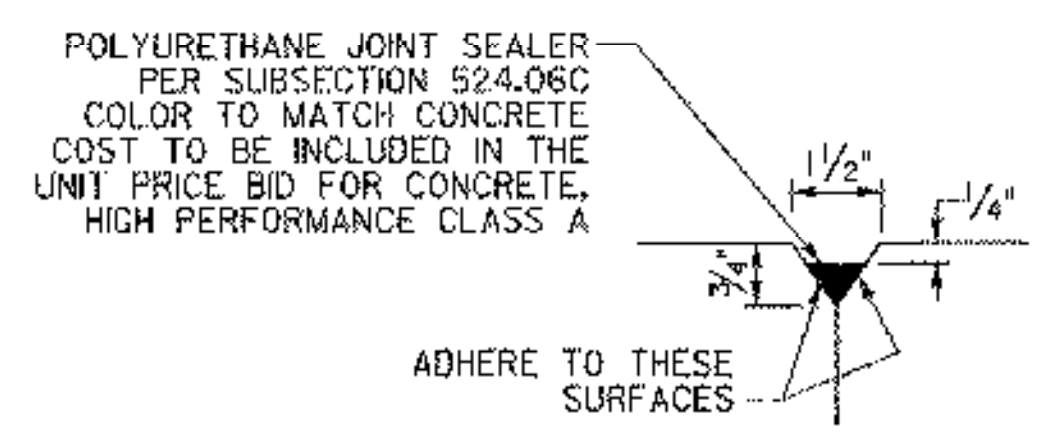
\* - THE 3" HORIZONTAL SECTION MAY BE ELIMINATED FOR FORMING SYSTEMS DESIGNED FOR THE CONSTRUCTION OF VERTICAL HAUNCHES IF APPROVED BY THE STRUCTURES ENGINEER. ANY HOLES RESULTING FROM THIS FORMING SYSTEM SHALL BE FILLED WITH MORTAR, TYPE IV. COST OF MORTAR TO BE INCIDENTAL TO ITEM 501.33.

**HAUNCH AND SHEAR CONNECTOR DETAILS**

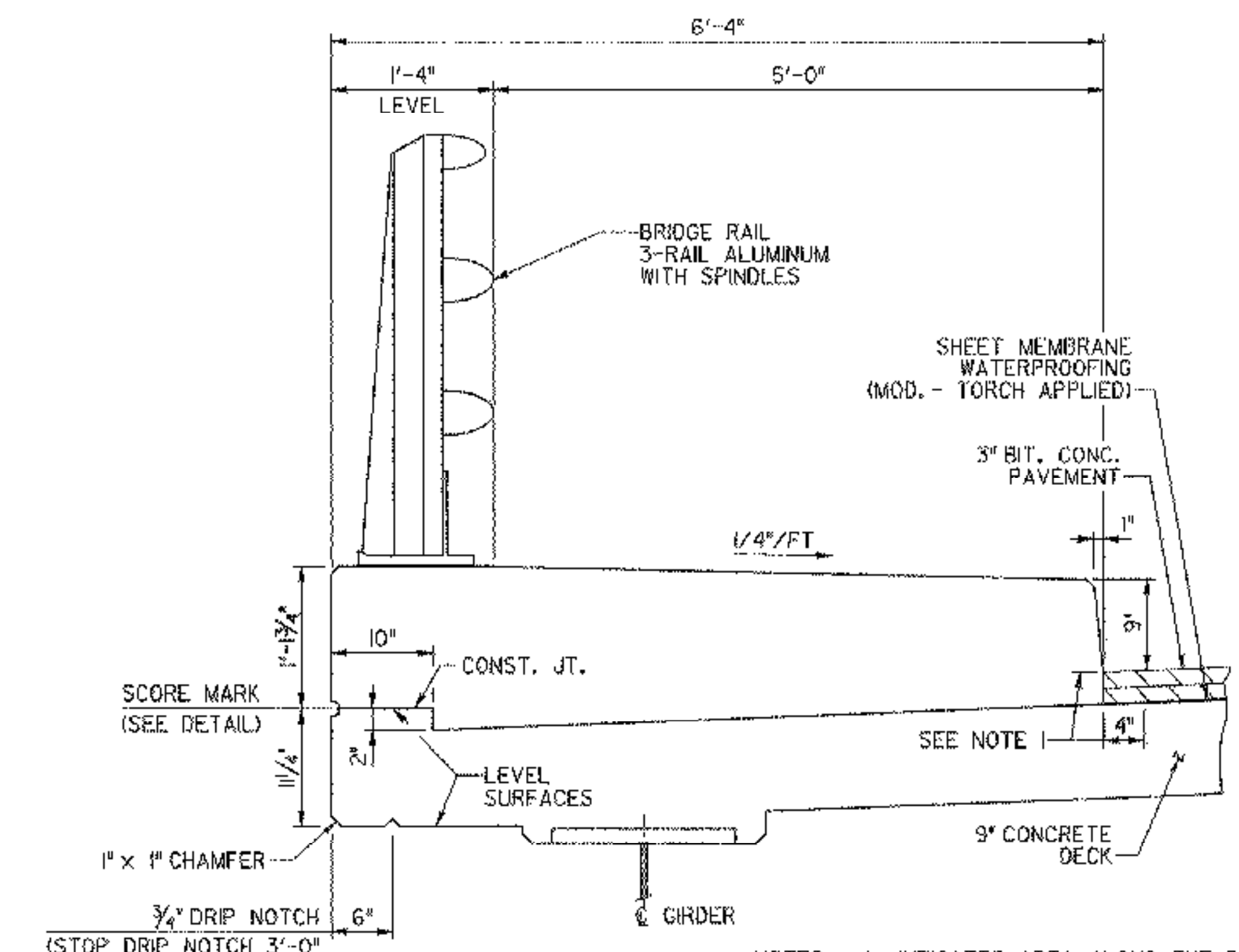
NOT TO SCALE



**SECTION A-A**

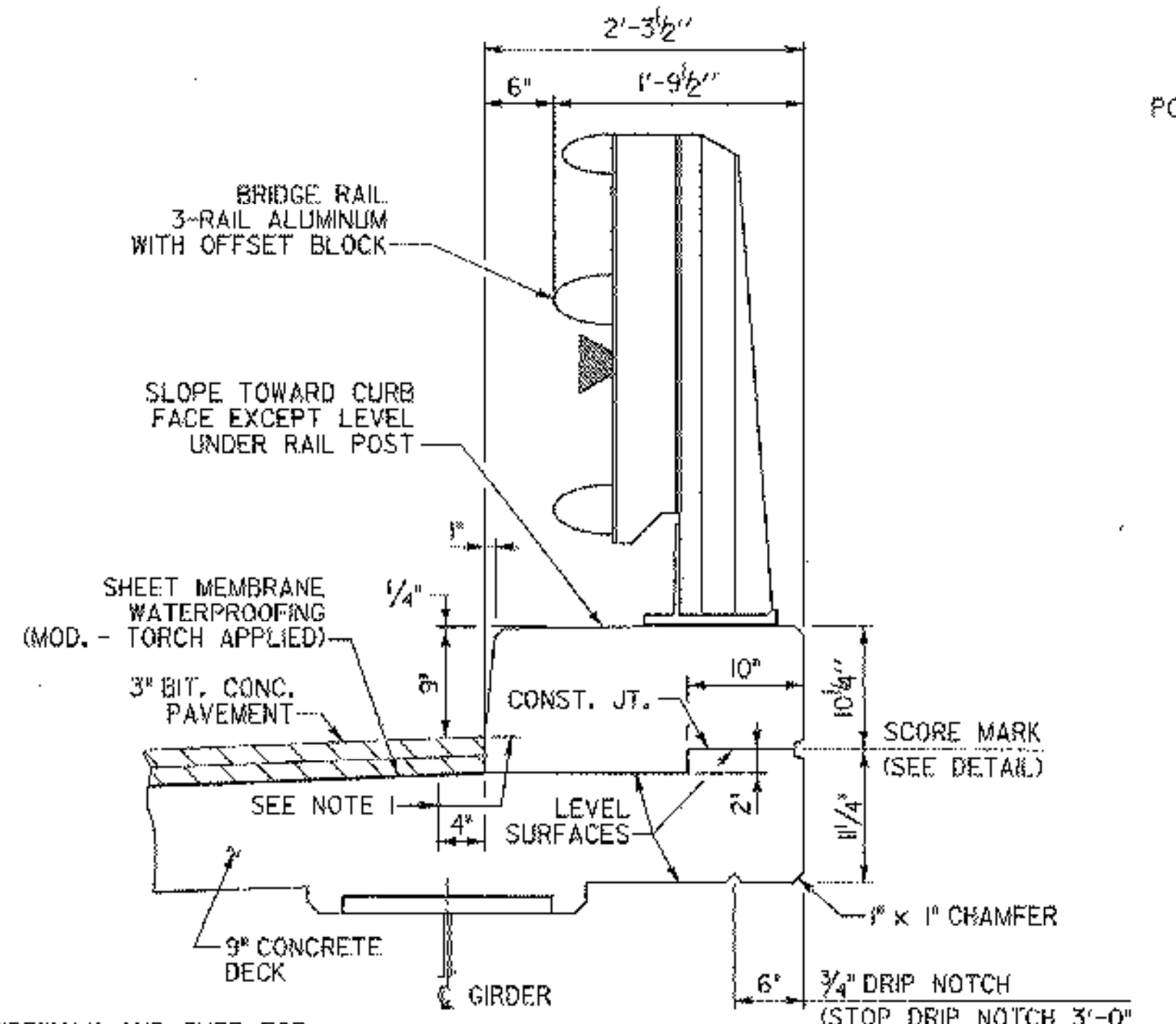


**DETAIL B**



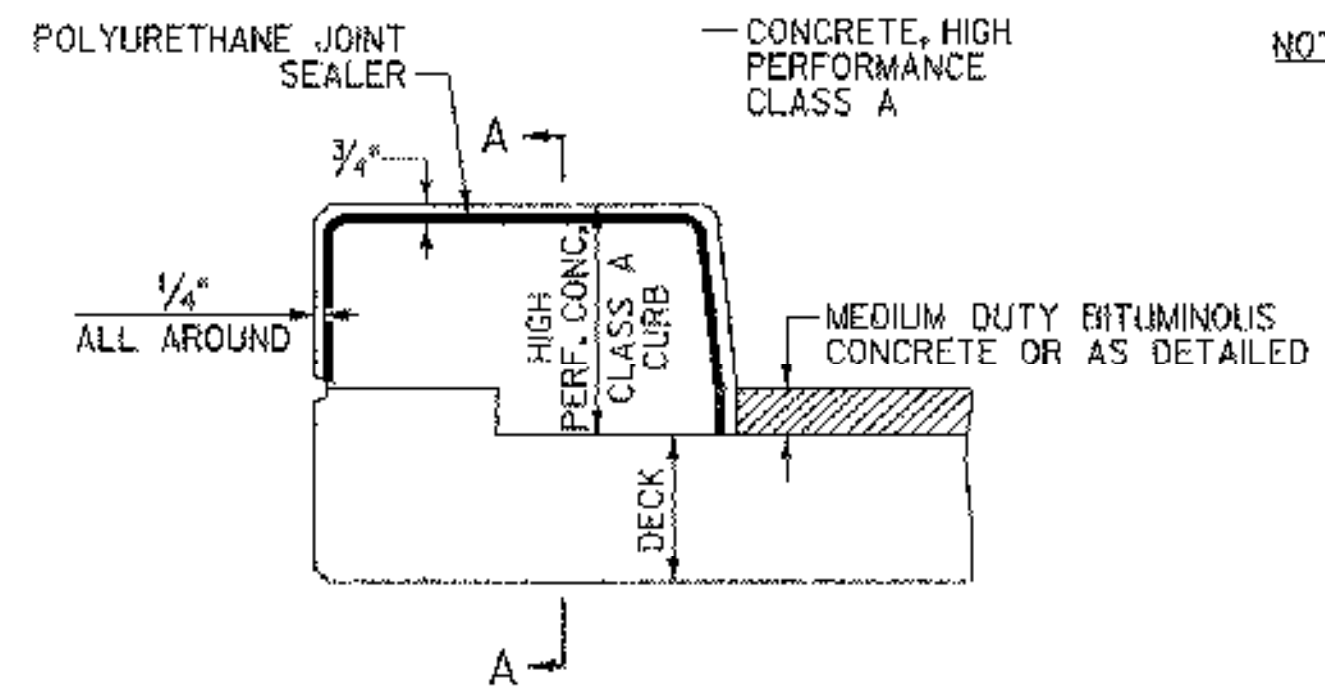
**CURB SECTION - LEFT FASCIA**

SCALE 1" = 1'-0"



**CURB SECTION - RIGHT FASCIA**

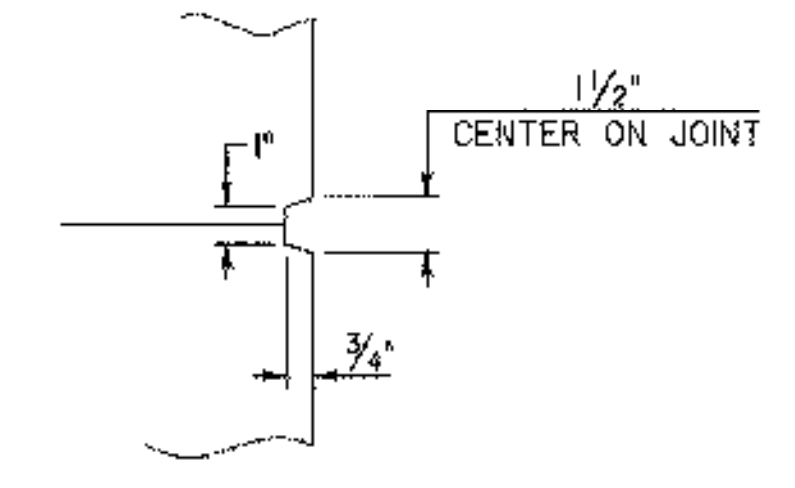
SCALE 1" = 1'-0"



**TYPICAL SECTION THROUGH CONCRETE CURB CONSTRUCTION JOINT**

NOT TO SCALE

- NOTES:
1. CONSTRUCTION JOINTS THROUGH CONCRETE CURBS SHALL BE SPACED MAXIMUM 15'-0" CENTER TO CENTER AND SHALL BE 1'-6" MINIMUM FROM THE CENTER OF THE NEAREST BRIDGE RAIL POST. CONCRETE SHALL BE PLACED IN ALTERNATING SECTIONS WITH A MINIMUM OF 48 HOURS DELAY BETWEEN ADJACENT POURS.
  2. LONGITUDINAL REINFORCING SHALL PASS THROUGH CONCRETE CURB CONSTRUCTION JOINTS.
  3. CONSTRUCTION JOINTS THROUGH SIDEWALKS SHALL BE SIMILAR TO CONCRETE CURB CONSTRUCTION JOINTS.



**SCORE MARK DETAIL**

NOT TO SCALE

<b>STATE OF VERMONT AGENCY OF TRANSPORTATION</b>			
Town Of	HUNTINGTON	Bridge No.	42
Highway No.	T.H. 4	Log Sta.	
		Surv. Sta.	
EAST STREET (T.H. #4) OVER HUNTINGTON RIVER			
<b>TYPICAL BRIDGE SECTION</b>			
Designed By	S. BURBANK	Drawn By	S. BURBANK
Checked By	Date	Bridge Design Supervisor	
G. BOGUE	08/05	M. CHENETTE	Date 09/05
PROJECT	HUNTINGTON	PROJECT NO.	BRO 1445 (29)
DH Dgn. ... \Cadd\Trans\201302typ.dgn		Plot Date:	1/12/2006
Bridge Sheet No.		Sheet 29 of 63	