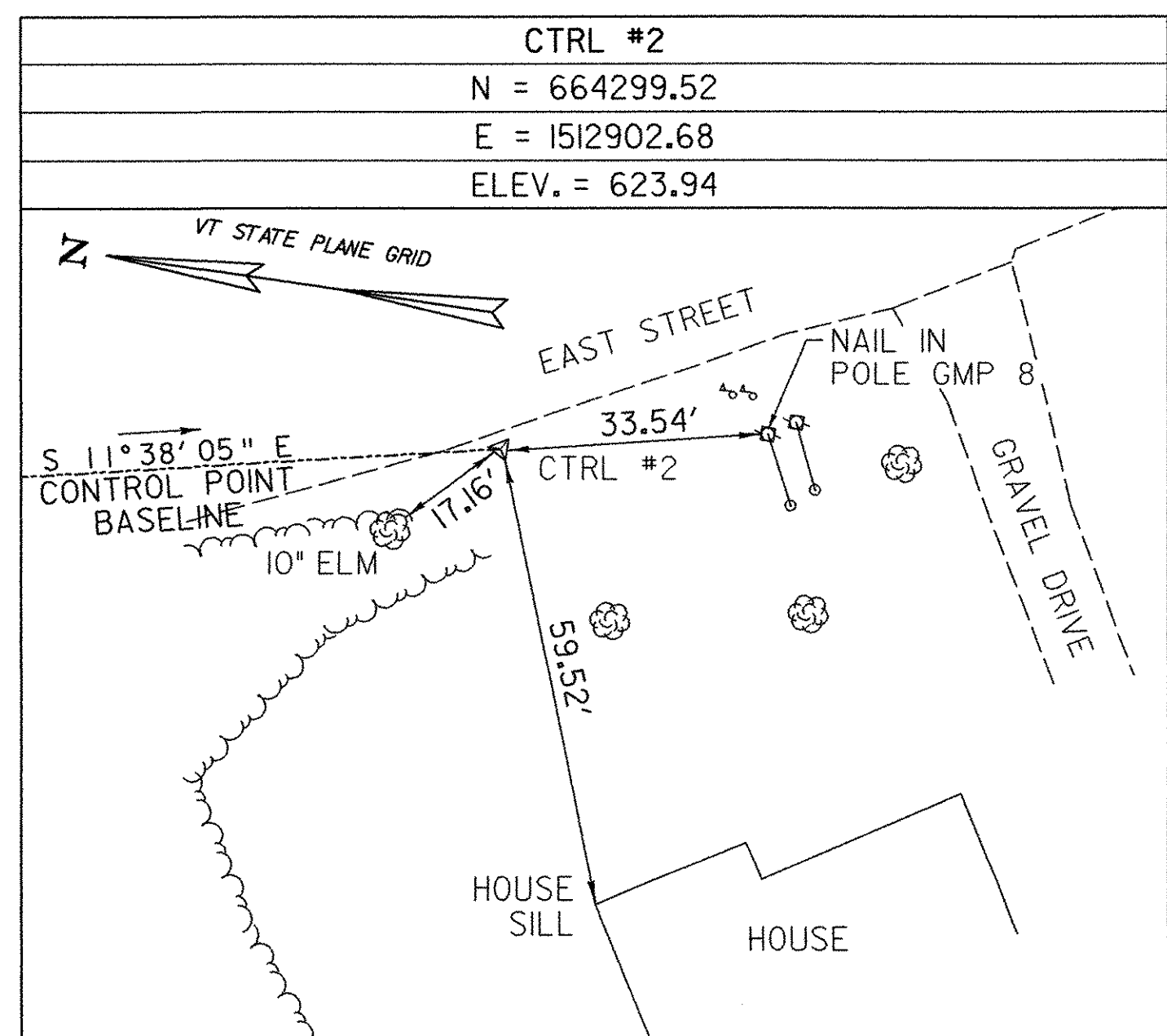
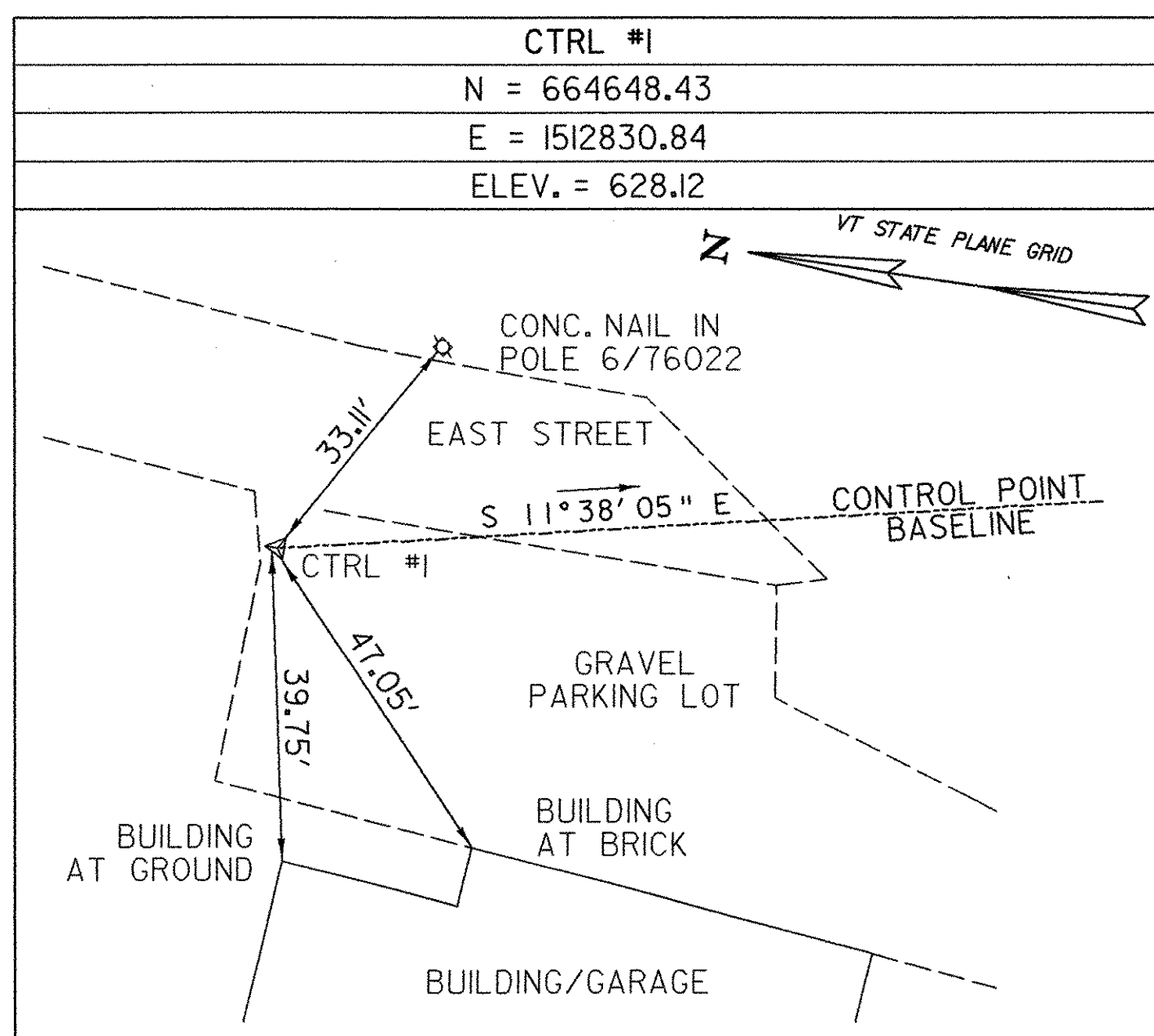


CURVE 1 DATA
 PI STA. 10+58.88
 R = 650.000 FT.
 L = 446.726 FT.
 DELTA = 39°22'40"
 T = 232.591 FT.
 E = 40.361 FT.

P.I.
 Sta 10+58.88
 N 664444.65
 E 1512820.72

PLAN

SCALE 1" = 30'-0"
 30 0 30



CENTERLINE EAST STREET (T.H. 4) ALIGNMENT				
BS	OC	FS POINT	ANGLE RIGHT	DISTANCE
CTRL #2	CTRL #1	POB	201°44'-28"	355.90'
CTRL #2	CTRL #1	PC	228°26'-25"	33.53'
CTRL #2	CTRL #1	PI	14°28'-34"	204.03'
CTRL #1	CTRL #2	PT	153°-31'-39"	66.46'
CTRL #1	CTRL #2	POE	158°-19'-00"	293.14'

BS = BACKSITE STATION
 OC = OCCUPIED STATION
 FS = FORESITE STATION

CHANNEL ALIGNMENT				
BS	OC	FS POINT	ANGLE RIGHT	DISTANCE
CTRL #1	CTRL #2	POB	319°-47'-47"	67.70'
CTRL #1	CTRL #2	POE	34°-39'-44"	258.98'

BS = BACKSITE STATION
 OC = OCCUPIED STATION
 FS = FORESITE STATION

PROJECT NAME: HUNTINGTON
 PROJECT NUMBER: BRO 1445 (29)

FILE NAME: ...Cadd\Trans\2013021e.dgn PLOT DATE: 1/12/2006
 PROJECT LEADER: M. CHENETTE DRAWN BY: D. HARRINGTON
 DESIGNED BY: T. KNIGHT CHECKED BY: T. KNIGHT
TIE SHEET SHEET 9 OF 63

