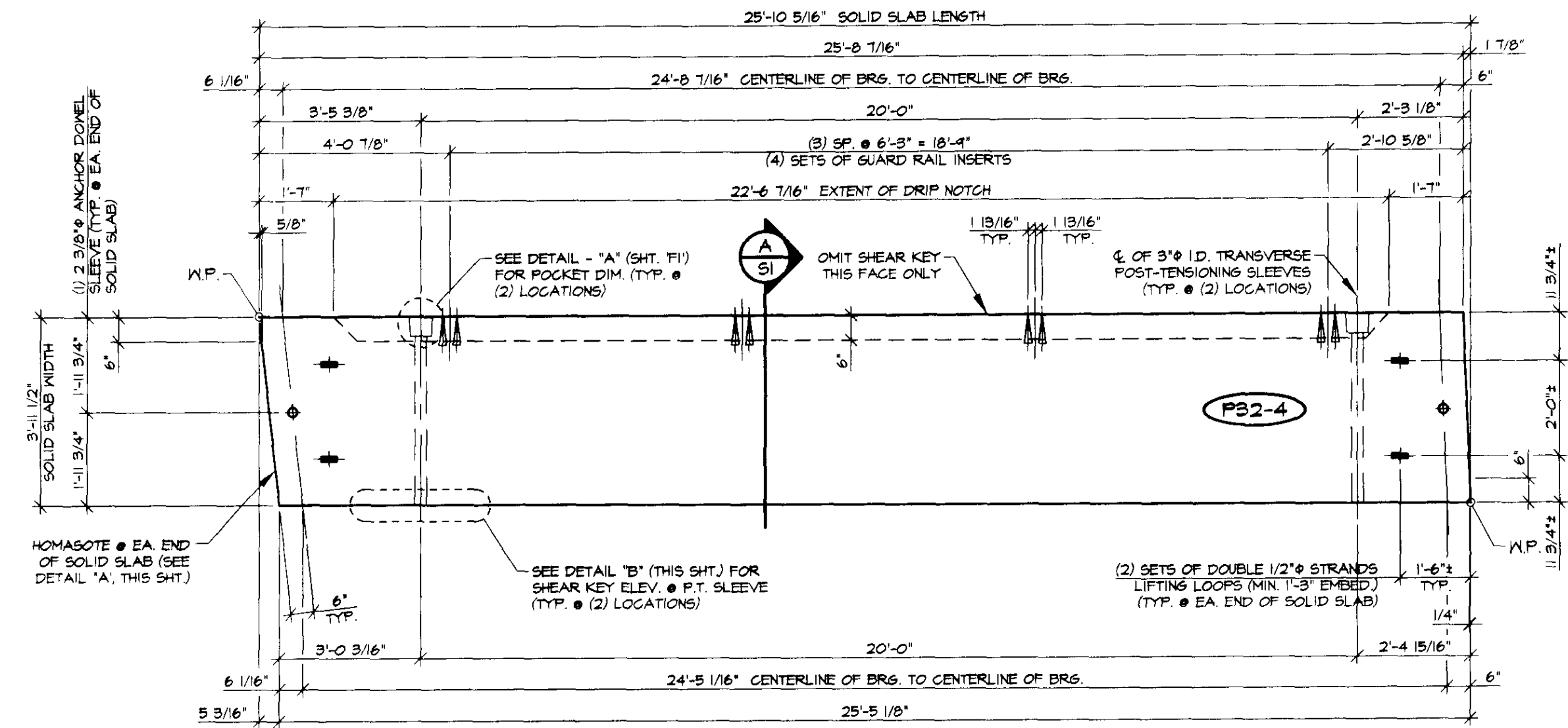
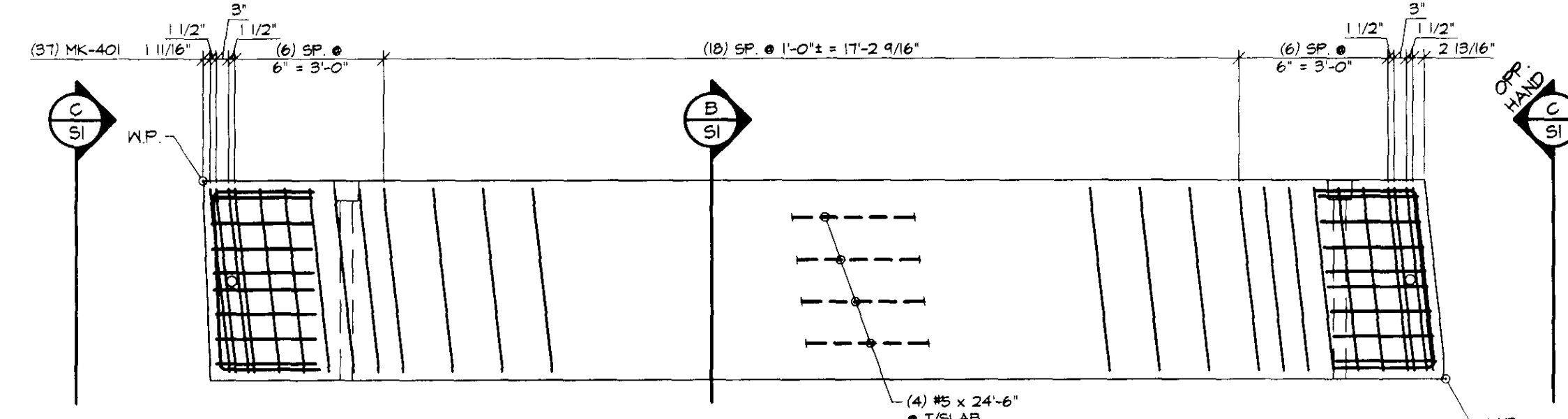


1 DIMENSIONAL PLAN
3/8" = 1'-0"

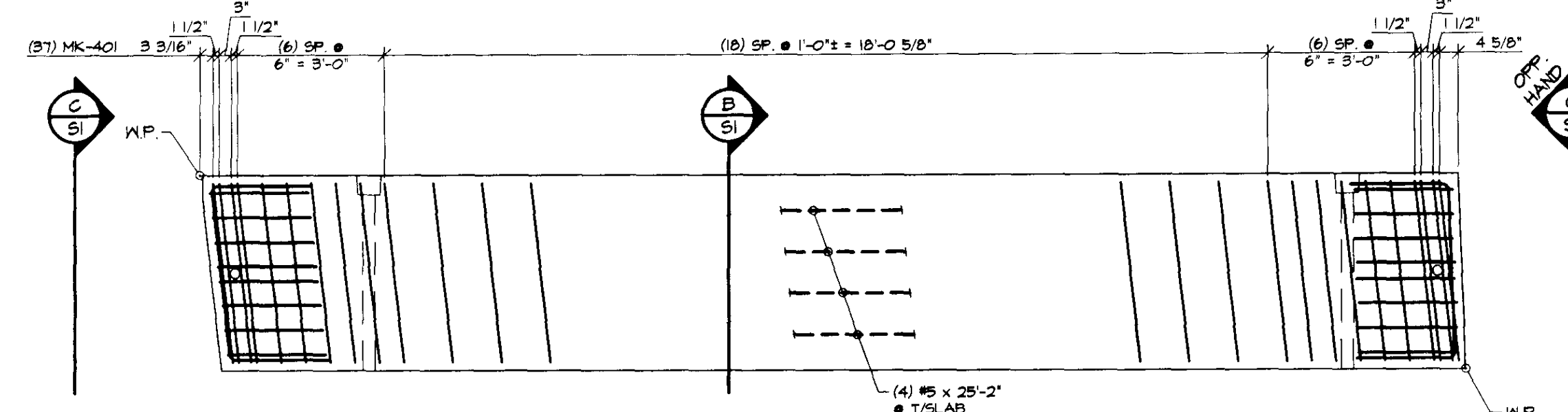


2 DIMENSIONAL PLAN
3/8" = 1'-0"



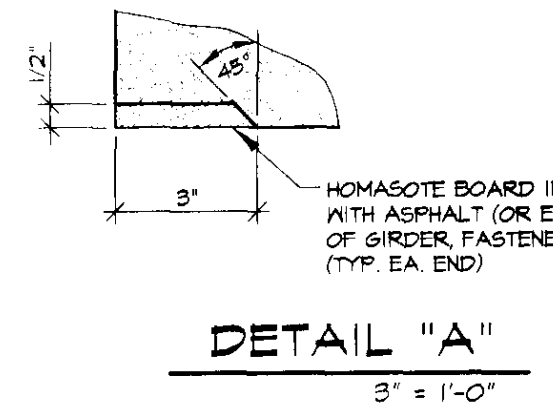
3 REINFORCING PLAN
3/8" = 1'-0"

SHOP NOTES:
- ADJUST REINFORCING AS REQUIRED TO CLEAR P.T. SLEEVES, ETC.
- MK-401 STIRRUPS SHOULD BE PARALLEL TO NON-MARK END.

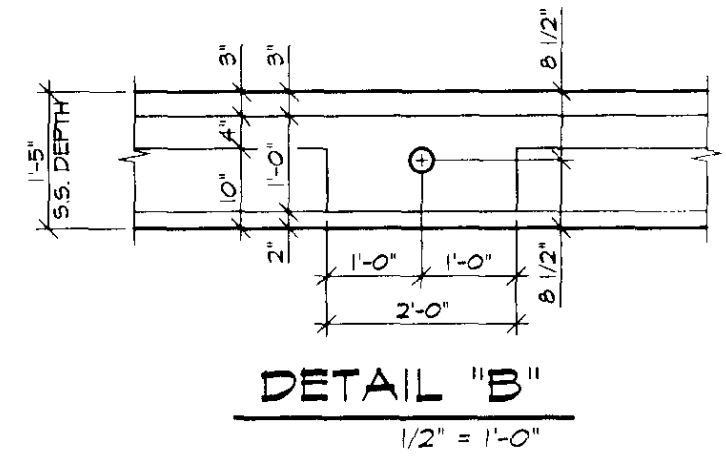


4 REINFORCING PLAN
3/8" = 1'-0"

SHOP NOTES:
- ADJUST REINFORCING AS REQUIRED TO CLEAR P.T. SLEEVES, ETC.
- MK-401 STIRRUPS SHOULD BE PARALLEL TO NON-MARK END.



DETAIL "A"
3" = 1'-0"

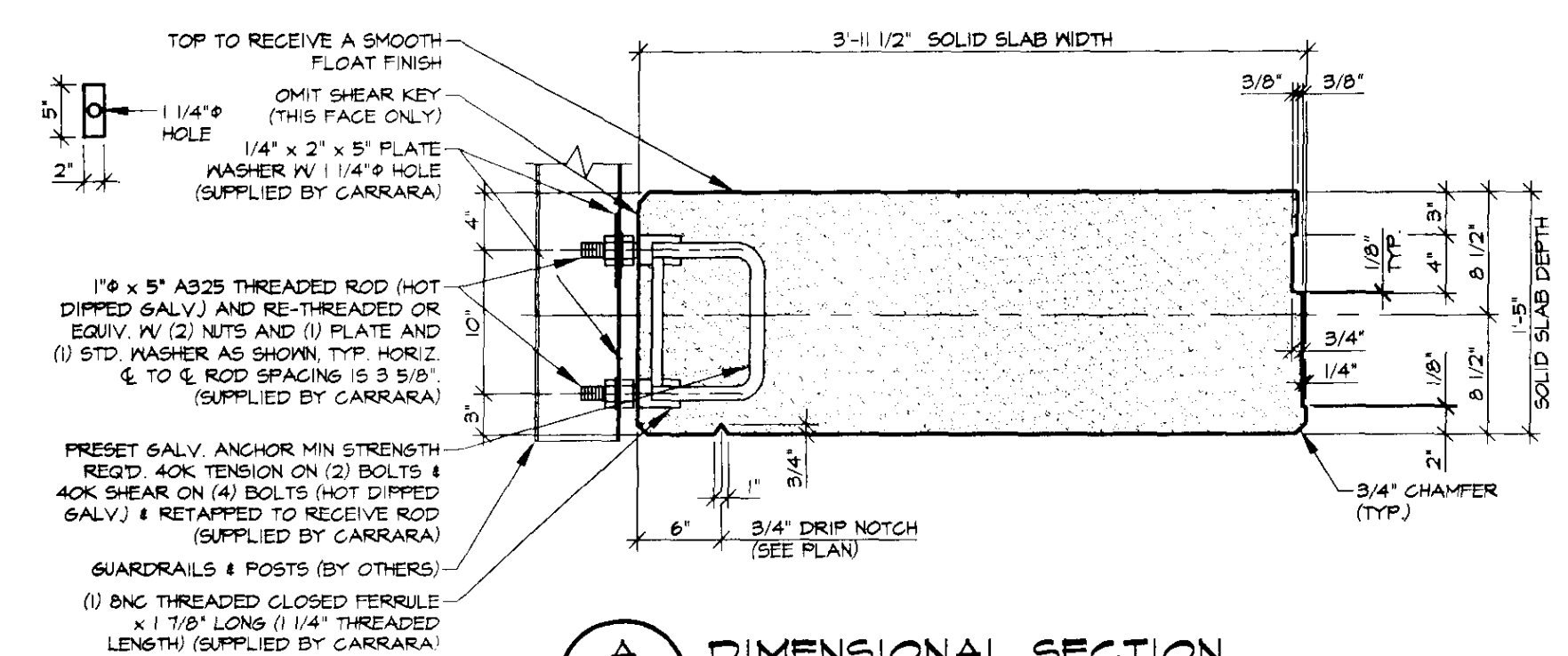


DETAIL "B"
1/2" = 1'-0"

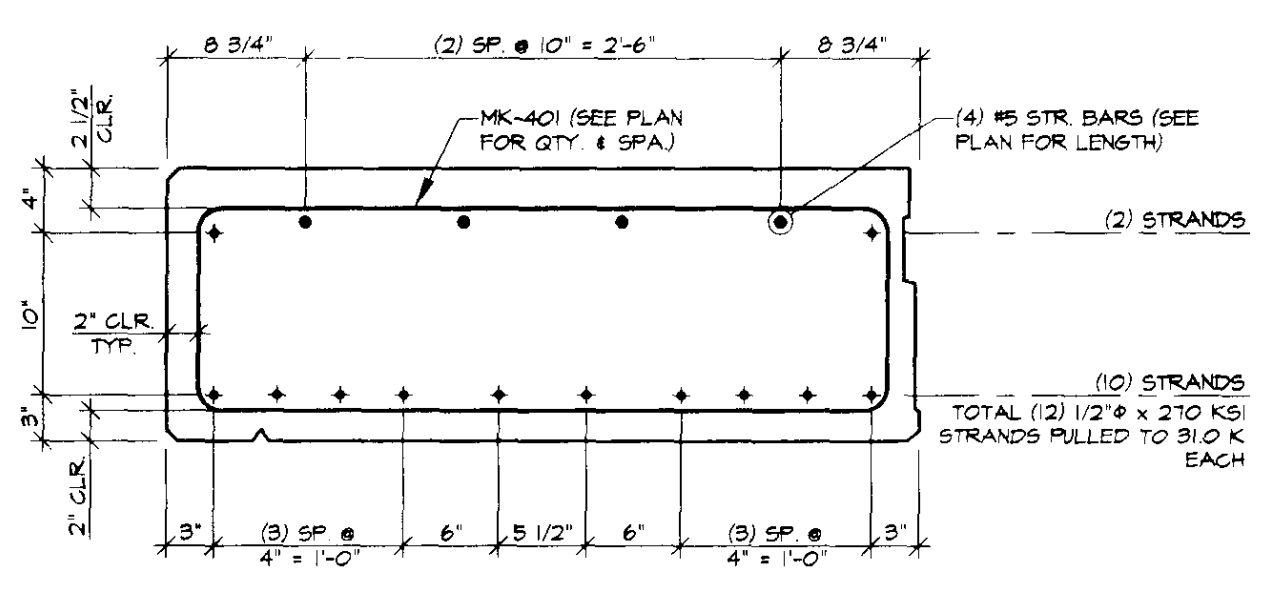
DETENSIONING SCHEDULE

3	5	7	9	11	12	10	8	6	4
---	---	---	---	----	----	----	---	---	---

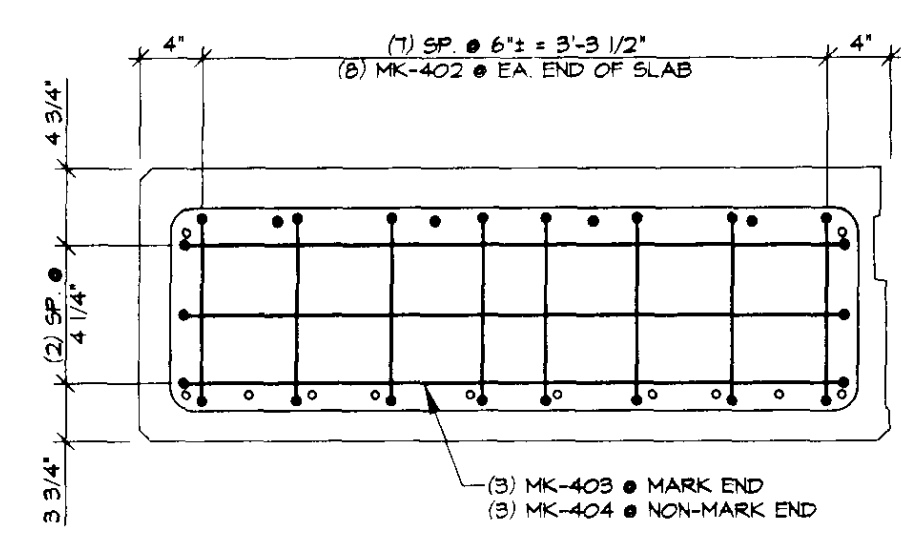
N.T.S.



A DIMENSIONAL SECTION
1" = 1'-0"



B REINFORCING SECTION
1" = 1'-0"



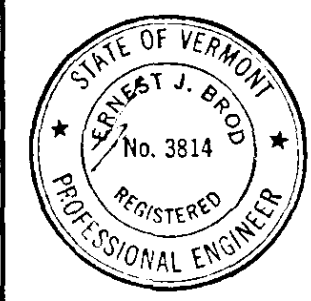
C END BLOCK REINF.
1" = 1'-0"

MARK:	P32-1	QTY.:	1	WT./TONS:	10.28	CU. YDS.:	5.08
MARK:	P32-4	QTY.:	1	WT./TONS:	10.63	CU. YDS.:	5.25

MATERIAL LIST / SLAB				
ITEM	MARK	DESCRIPTION	QTY./SLAB	
			P32-1	P32-4
1	401	#4 BENT BAR	31	31
2	402	#4 BENT BAR	16	16
3	403	#4 BENT BAR	3	3
4	404	#4 BENT BAR	3	3
5				
6		#5 x 24'-6"	4	
7		#5 x 25'-2"		4
8				
9				
10				
11				
12		DOUBLE 1/2" STRAND LIFTING LOOP	4	4
13		PRESET GALV. ANCHOR	8	8
14		1" x 5" A325 THREADED ROD (HOT DIPPED GALV.)	16	16
15		1/4" x 2" x 5" WASHER W (1) 1/4" HOLE (GALV.)	16	16
16		STANDARD WASHER	16	16
17		1" NUTS (GALV.)	32	32
18		8NC THREADED CLOSED FERRULE x 1 7/8" LONG (1 1/4" THREAD LENGTH)	16	16
19				

NO.	DATE	REVISION

DRAWN: B.M. LOPEZ
DESIGNED: E.J. BROD
CHECKED: _____
APPROVED: _____



J.P. CARRARA & SONS INC.
Precast & Prestress Manufacturer
2484 CASE STR., MIDDLEBURY, VERMONT 05753
Phone: (802)388-6361 Fax: (802)388-9010

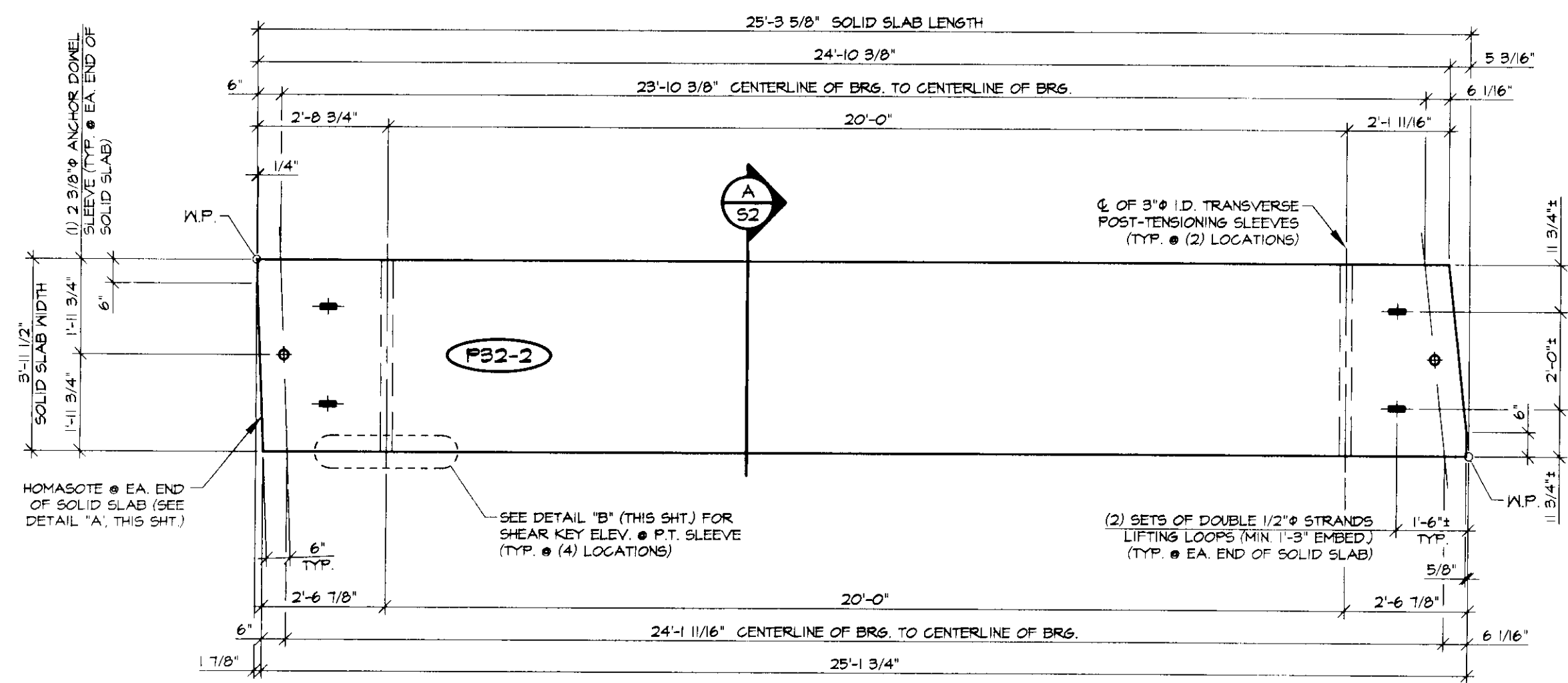
Double-Tees Hollow-Core Plank Flat Panels

TOWN OF PLYMOUTH, VERMONT
HC 70, BOX 39A
PLYMOUTH, VERMONT 05056

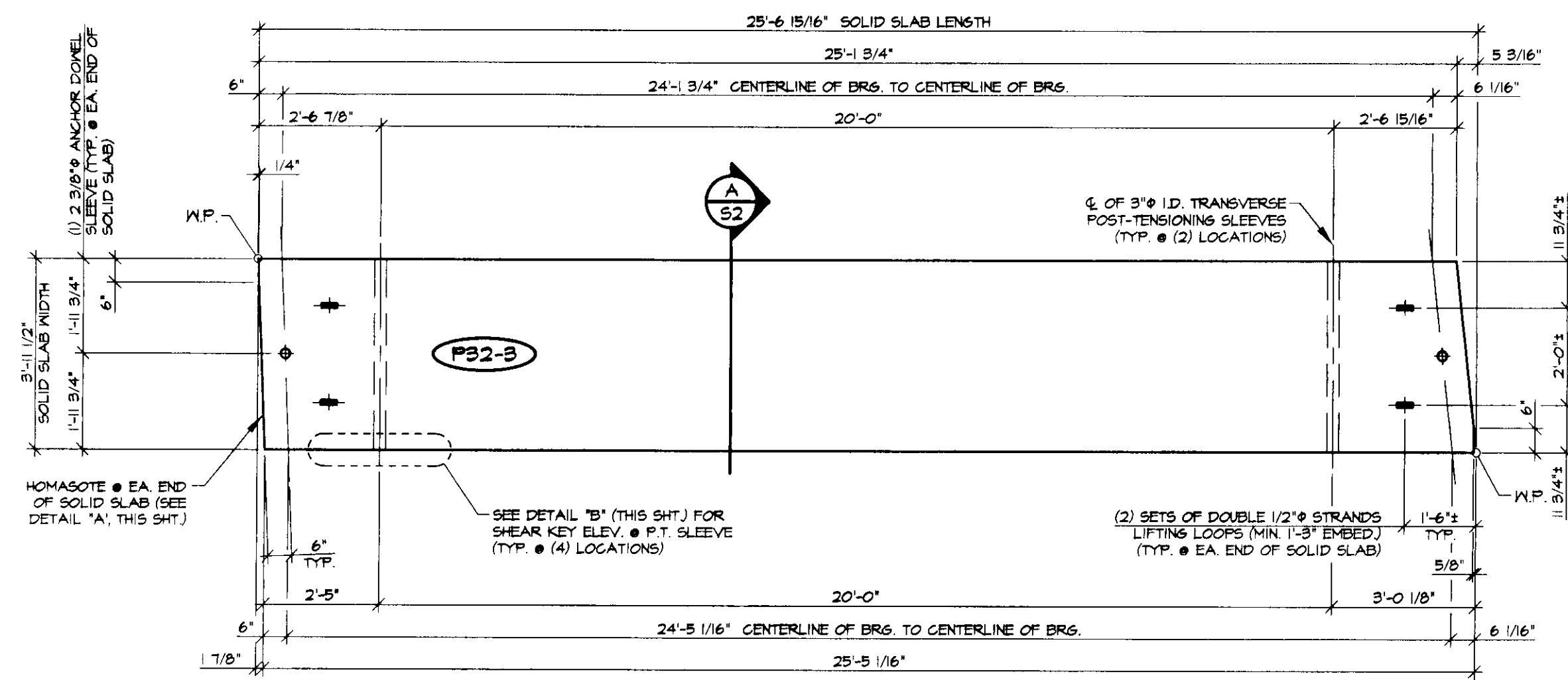
Project Name:
**PLYMOUTH BRIDGE #32
TH32 OVER BROAD BROOK
PLYMOUTH, VERMONT**

P/S SOLID SLAB DETAILS

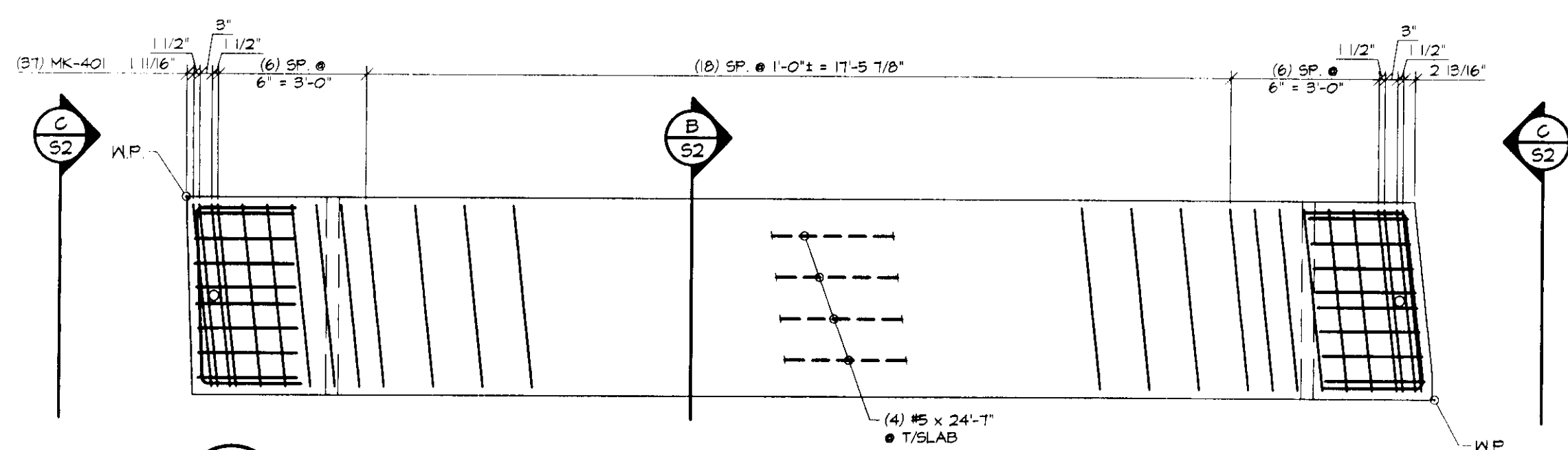
SCALE: NOTED
JOB #: 23106-00
DATE: 8-21-00
SHEET #: S1



1 DIMENSIONAL PLAN
S2
3/8" = 1'-0"

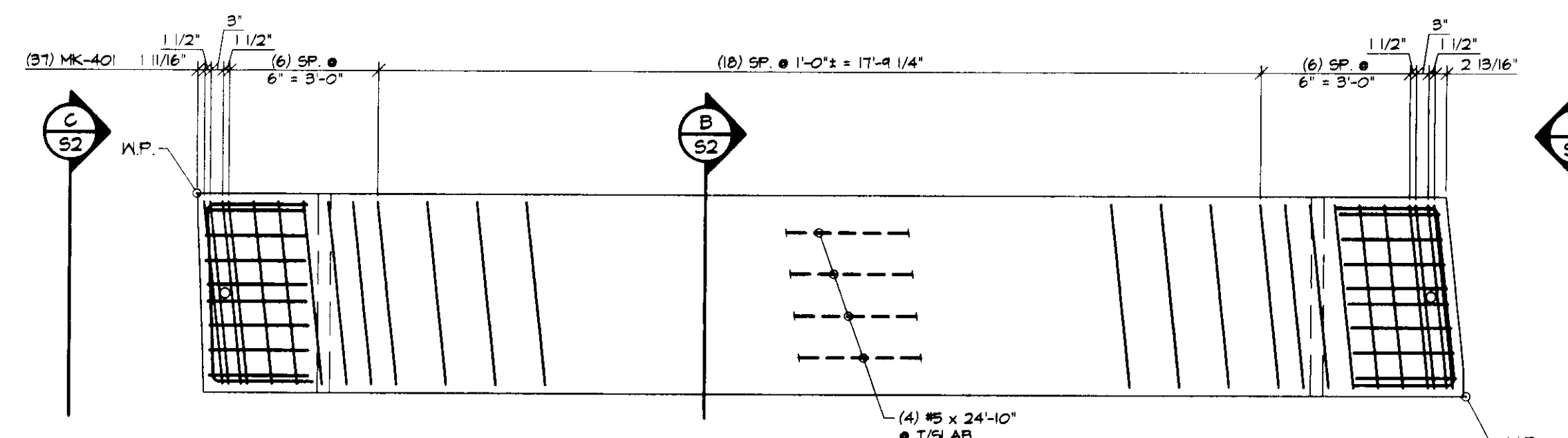


2 DIMENSIONAL PLAN
S2
3/8" = 1'-0"



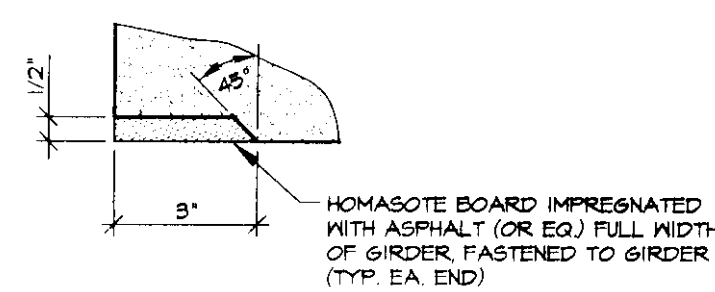
3 REINFORCING PLAN
S2
3/8" = 1'-0"

SHOP NOTES:
- ADJUST REINFORCING AS REQUIRED TO CLEAR P.T. SLEEVES, ETC.
- MK-401 STIRRUPS SHOULD BE PARALLEL TO NON-MARK END.

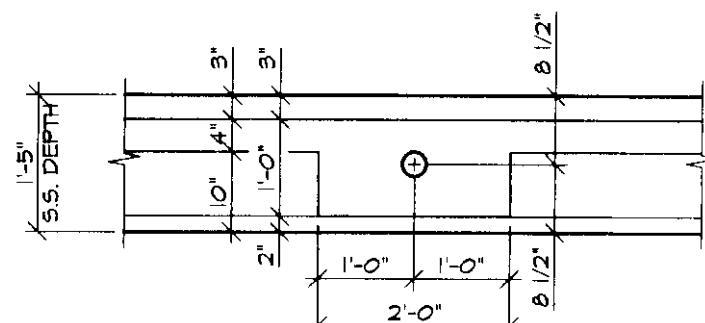


4 REINFORCING PLAN
S2
3/8" = 1'-0"

SHOP NOTES:
- ADJUST REINFORCING AS REQUIRED TO CLEAR P.T. SLEEVES, ETC.
- MK-401 STIRRUPS SHOULD BE PARALLEL TO NON-MARK END.



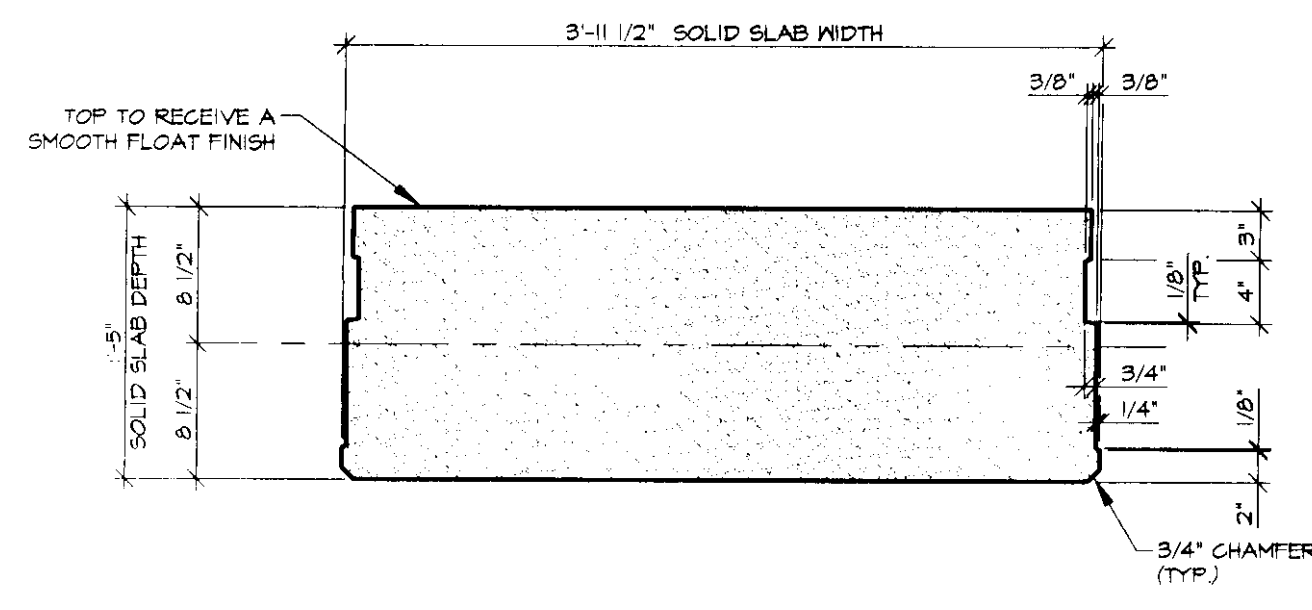
DETAIL "A"
3" = 1'-0"



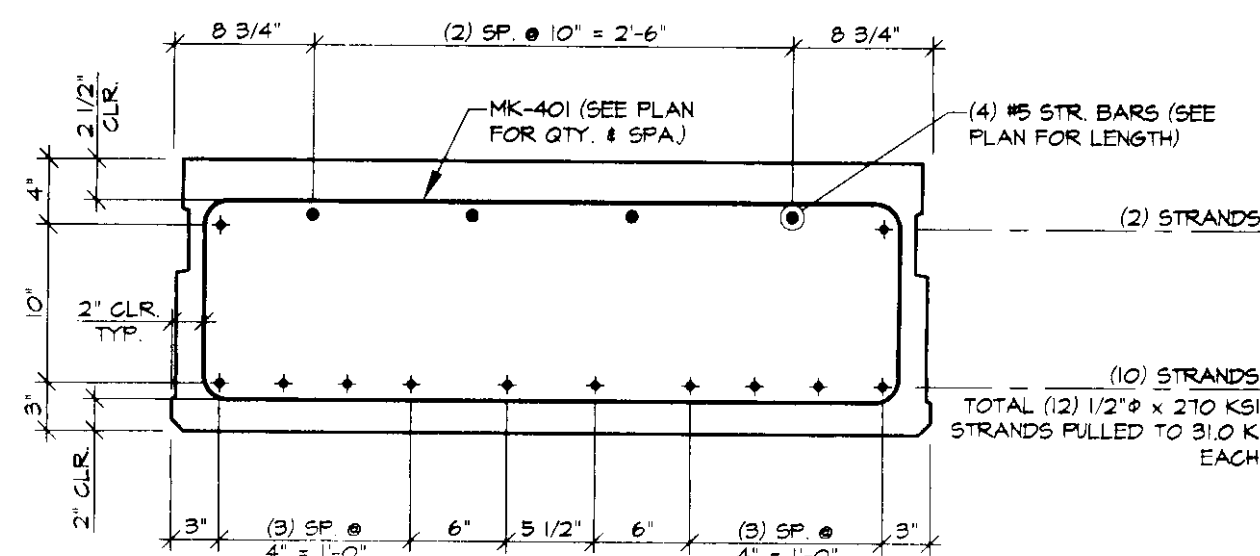
DETAIL "B"
1/2" = 1'-0"

DETENSIONING SCHEDULE
N.T.S.

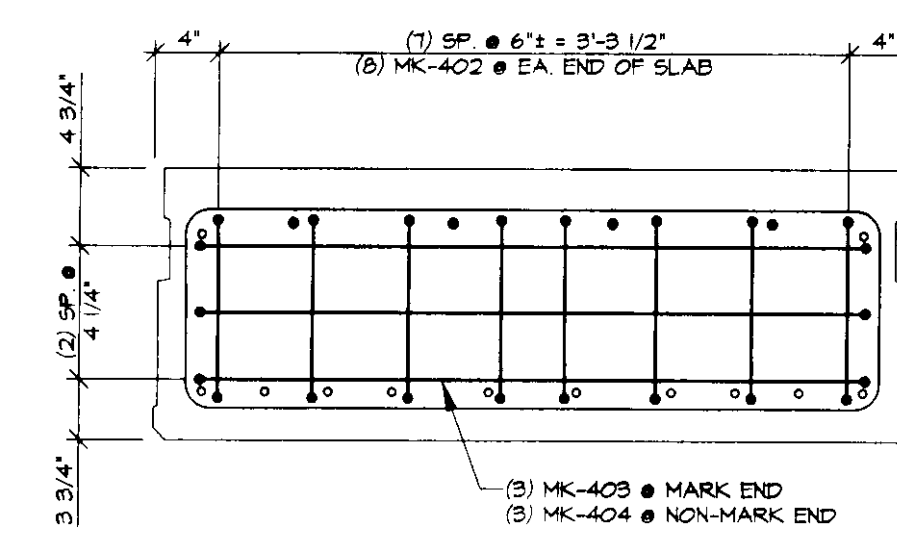
1	2
3	4
5	6
7	8
9	10
11	12
13	14
15	16
17	18
19	20



A DIMENSIONAL SECTION
S2
1" = 1'-0"



B REINFORCING SECTION
S2
1" = 1'-0"



C END BLOCK REINF.
S2
1" = 1'-0"

MARK: P32-2	QTY.:	WT./TONS:	10.31	CU. YDS.:	5.09
MARK: P32-3	QTY.:	WT./TONS:	10.42	CU. YDS.:	5.15
MATERIAL LIST / SLAB					
ITEM	MARK	DESCRIPTION	QTY./SLAB		
			P32-2	P32-3	
1	401	#4 BENT BAR	37	37	
2	402	#4 BENT BAR	16	16	
3	403	#4 BENT BAR	3	3	
4	404	#4 BENT BAR	3	3	
5					
6		#5 x 24'-7"	4		
7		#5 x 24'-10"		4	
8					
9					
10					
11					
12		DOUBLE 1/2" STRAND LIFTING LOOP	4	4	
13					
14					
15					
16					
17					
18					
19					
20					

NO.	DATE	REVISION

DRAWN: B.M. LOPEZ
DESIGNED: E.J. BROD
CHECKED: _____
APPROVED: _____

J.P. CARRARA & SONS INC.
Precast & Prestress Manufacturer
2484 CASE STR. WOODLURY, VERMONT 05753
Phone: (802) 388-8361
Fax: (802) 388-9010

TOWN OF PLYMOUTH, VERMONT
HC 70, BOX 39A
PLYMOUTH, VERMONT 05056

Project Name:
**PLYMOUTH BRIDGE #32
TH32 OVER BROAD BROOK
PLYMOUTH, VERMONT**

F/S SOLID SLAB DETAILS

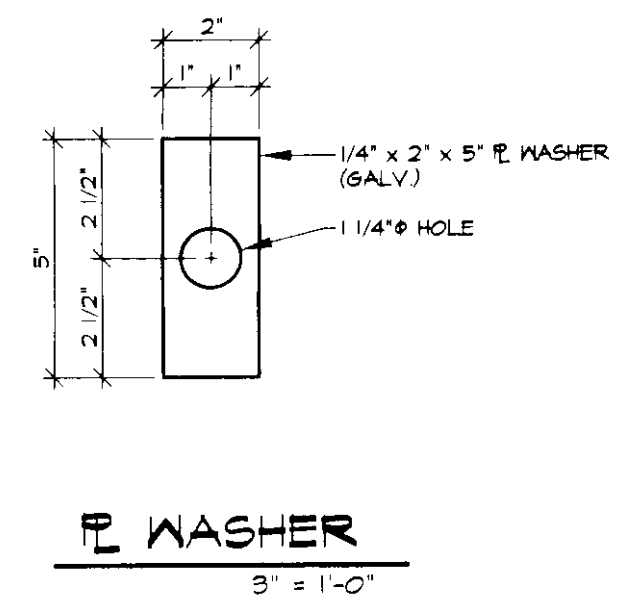
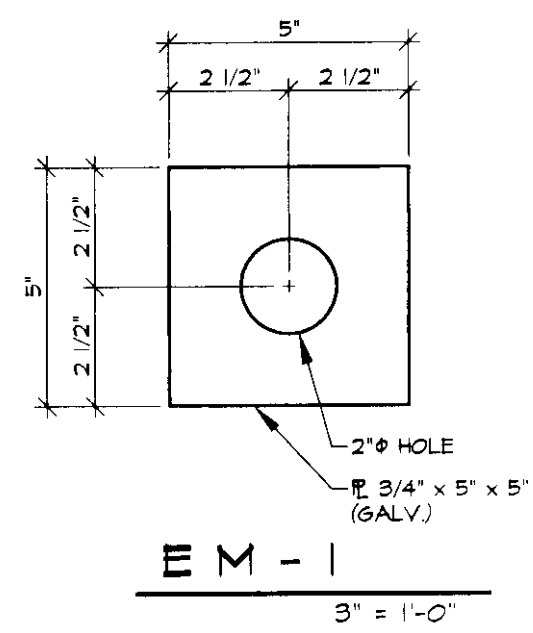
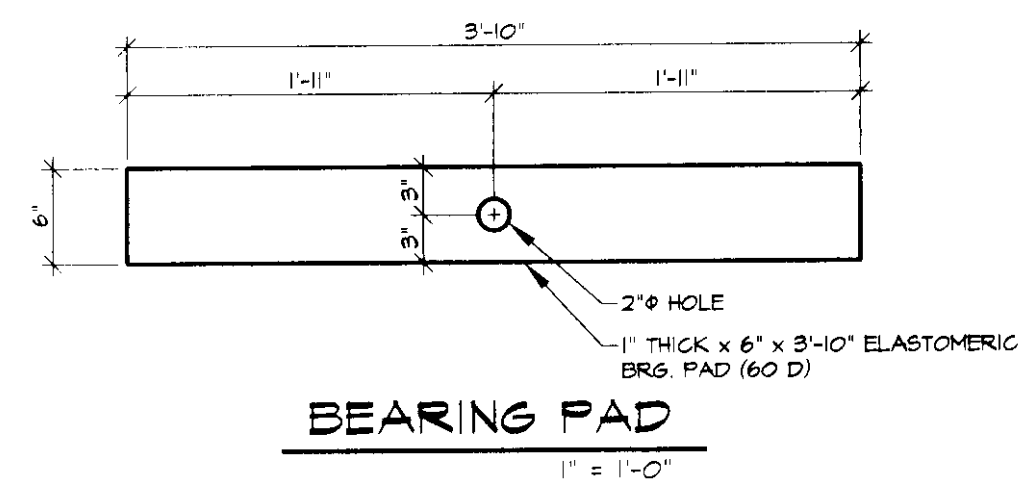
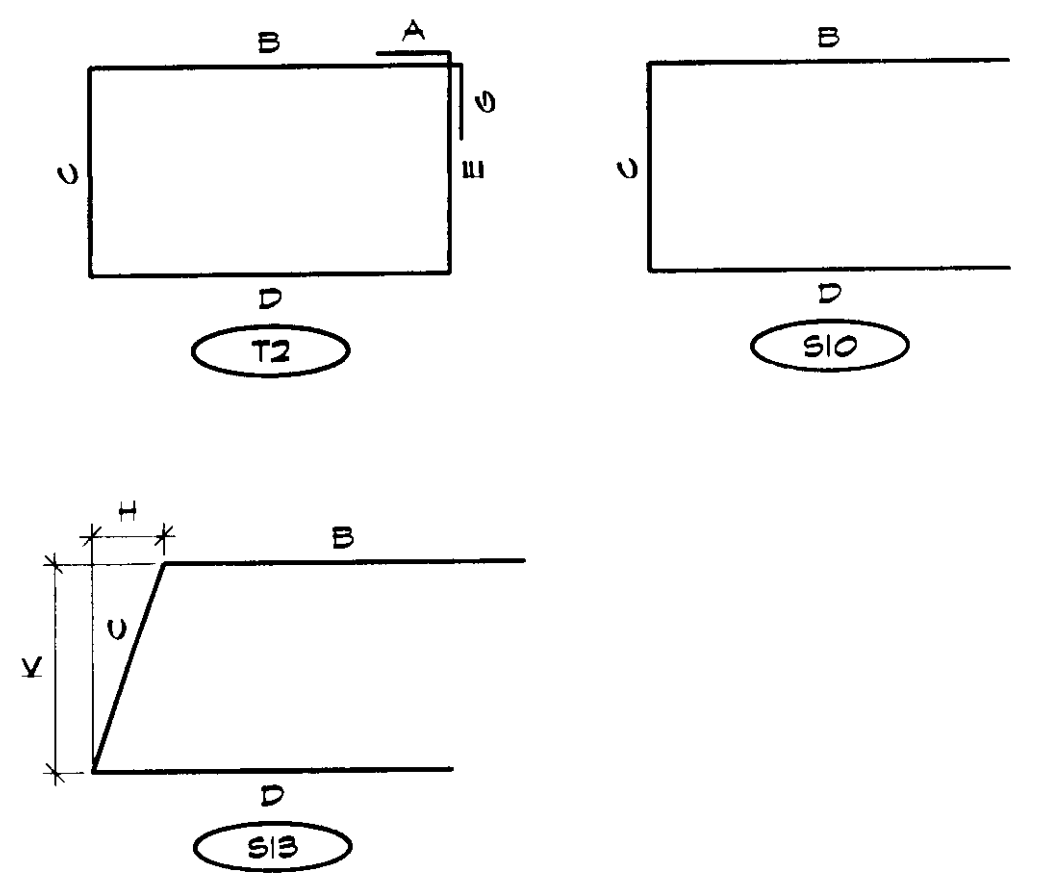
SCALE: NOTED
JOB #: 23106-00
DATE: 8-21-00
SHEET #: S2

BENT BARS, TIES, & STIRRUPS

ITEM	MARK	QTY.	SIZE	LENGTH	TYPE	A	B	C	D	E	F/R	G	H	J	K	O	GRADE	REMARKS
1	401	148	#4	9'-11 1/2"	T2	6'	3'-7 3/4"	1'-0 1/2"	3'-7 3/4"	1'-0 1/2"		6'					60	
2	402	64	#4	4'-9 1/4"	S10		2'-0"	11 1/4"	2'-0"								60	
3	403	12	#4	7'-4 1/4"	S10		2'-0"	3'-6 1/4"	2'-0"								60	
4	403	12	#4	7'-4 1/2"	S13		2'-0"	3'-6 1/2"	2'-0"				4 5/8"		3'-6 1/4"		60	
5																		
6		4	#5	24'-6"	STR.												60	
7		4	#5	24'-1"	STR.												60	
8		4	#5	24'-10"	STR.												60	
9		4	#5	25'-2"	STR.												60	
10																		
11																		
12																		
13																		
14																		
15																		
16																		
17																		
18																		
19																		
20																		

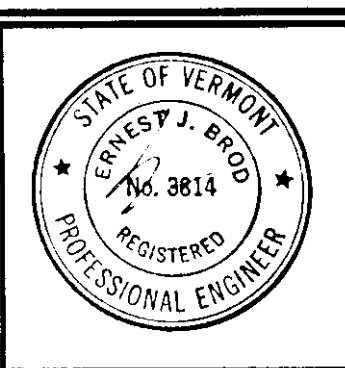
MISCELLANEOUS MATERIALS

ITEM	MARK	QTY.	DESCRIPTION	REMARKS
1	EM-1	4	1/2" x 2" x 5" W/ (1) 2" HOLE (GALV.)	FOR ERECTION, SEE DETAIL THIS SHEET
2		4	SINGLE USE STRESSING CHUCK	FOR ERECTION
3		2	1/2" POLYSTYRAND x 20'-0"	FOR ERECTION
4		8	1" THICK x 6" x 3'-10" ELASTOMERIC BRG. PAD	FOR ERECTION, SEE DETAIL THIS SHEET
5		2	#8 x 2'-4" ANCHOR DOVEL	FOR ERECTION
6				
7		16	DOUBLE 1/2" STRAND LIFTING LOOP	
8		16	PRESET GALV. ANCHOR	
9		32	1" x 5" A325 THREADED ROD	HOT DIPPED GALVANIZED
10		32	1/4" x 2" x 5" W/ (1) 1/4" HOLE	GALVANIZED, SEE DETAIL THIS SHEET
11		32	STANDARD WASHER	
12		64	1" NUTS	GALVANIZED
13		32	3/8" THREADED CLOSED FERRULE x 1 1/8" LONG	1 1/4" THREAD LENGTH
14				
15				
16				
17				
18				
19				
20				



NO.	DATE	REVISION

DRAWN: B.M. LOPEZ
 DESIGNED: E.J. BROD
 CHECKED: _____
 APPROVED: _____



J.P. CARRARA & SONS INC.
 Precast & Prestress Manufacturer
 2464 CASE STR., MIDDLEBURY, VERMONT 05753
 Phone: (802) 388-6361 Fax: (802) 388-9010

Double-Tees Hollow-Core Plank Flat Panels

TOWN OF PLYMOUTH, VERMONT
 HC 70, BOX 39A
 PLYMOUTH, VERMONT 05056

Project Name:
PLYMOUTH BRIDGE #32
 TH32 OVER BROAD BROOK
 PLYMOUTH, VERMONT

MATERIALS LIST

SCALE: NOTED
 JOB #: 23106-00
 DATE: 8-21-00
 SHEET #: M1