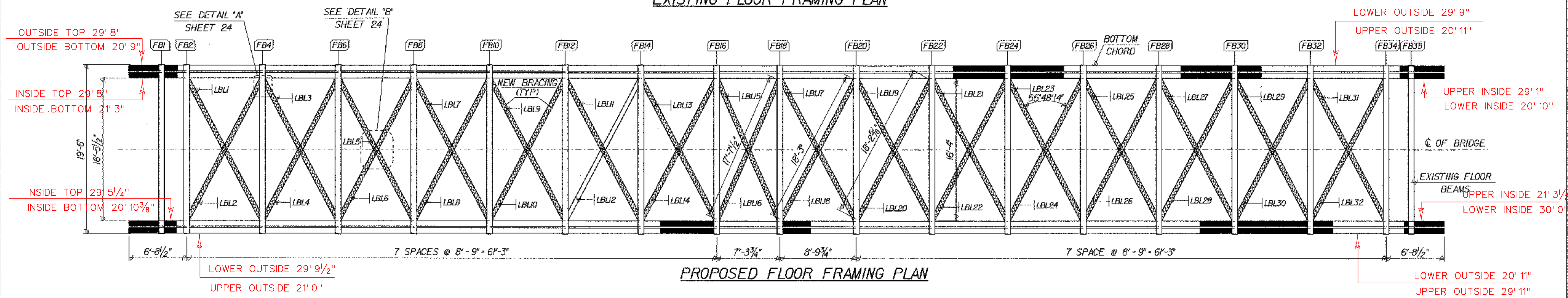


EXISTING FLOOR FRAMING PLAN



PROPOSED FLOOR FRAMING PLAN

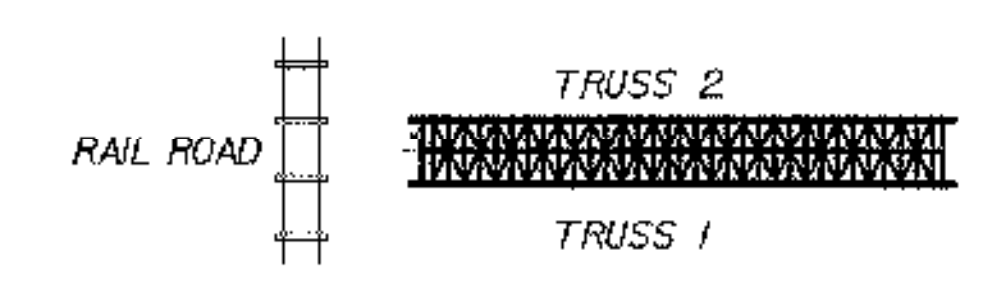
MEMBER IDENTIFICATION TABLE						REPLACE	
MEMBER	SYMBOL	LENGTH	WIDTH	THICKNESS	TOTAL NO.		
BOTTOM CHORD	BC	152'-0"	7 1/2"	8 1/4" x 8 1/2"	8	*PORTION	
FLOOR BEAM	FB	19'-6"	8"	7'-0"	35	1,6,16,18	34,35
LATERAL BRACING LOWER	LBL	18'-3"	3"	6"	32	INSTALL ALL NEW	
DISTRIBUTION BEAM	DB	145'-1 1/2"	6"	11"	2	REMOVE	DB1, DB2

RETAIN	REMOVE
FB1, FB2, FB4, FB6, FB8, FB10, FB12, FB14, FB16, FB18, FB20, FB22, FB24, FB26, FB28, FB30, FB32, FB34, FB35	FB3, FB5, FB7, FB9, FB11, FB13, FB15, FB17, FB19, FB21, FB23, FB25, FB27, FB29, FB31, FB33

\*AREAS OF CONCERN HAVE BEEN DEPICTED IN THE PROPOSED FLOOR FRAMING PLAN BUT PRECISE SEGMENTS HAVE NOT BEEN IDENTIFIED FOR REPLACEMENT. IF THESE AREAS ARE FOUND TO REQUIRE REPLACEMENT THEN THE FULL SEGMENT BETWEEN SCARF JOINTS SHALL BE REPLACED.

- LEGEND:
- REMOVE SHADED MEMBERS
  - NEW MEMBERS
  - AREAS OF CONCERN

SCALE 3/16" = 1'-0"  
1 0 2 4 6 8



FLOOR PLAN SHEET

PROJECT NAME: CAMBRIDGE  
 PROJECT NUMBER: BHO 1448(31) C/2  
 FILE NAME: /00j244/str/sj244bdg.dgn  
 PROJECT LEADER: DAVID HOYNE  
 DESIGNED BY: M. GAGULIC  
 PLOT DATE: 06-MAR-2003  
 DRAWN BY: R. PELLETT  
 CHECKED BY: M. FOWLER  
 SHEET 15 OF 62