

STONE FILLTYPE I

38 STA 11+41 - 11+65 LT 58
38 STA 11+47 - 11+67 RT 61
58 STA 13+13 - 13+22 LT
58 STA 13+10 - 14+25 RT

PLANK RAIL (MODIFIED)

06 STA 11+04.59 - 11+56.77 LT 58
12 STA 11+07.3 - 11+58.59 RT 59
15 STA 13+18.98 - 14+75.71 LT 71
15 STA 13+20.08 - 14+74.44 RT 71

GRUBBING MATERIAL (G)

15 STA 13+23 - 13+45 LT 24
15 STA 13+25 - 14+25 RT 10

STONE FILLTYPE II

14 STA 13+23 - 13+45 LT 39
11 STA 13+25 - 14+25 RT 10

REMOVAL AND DISPOSAL OF GUARD RAIL

51 STA 11+40 - 11+54 RT
51 STA 13+21 - 14+68 LT
51 STA 13+24 - 14+70 RT

EROSION MATTING

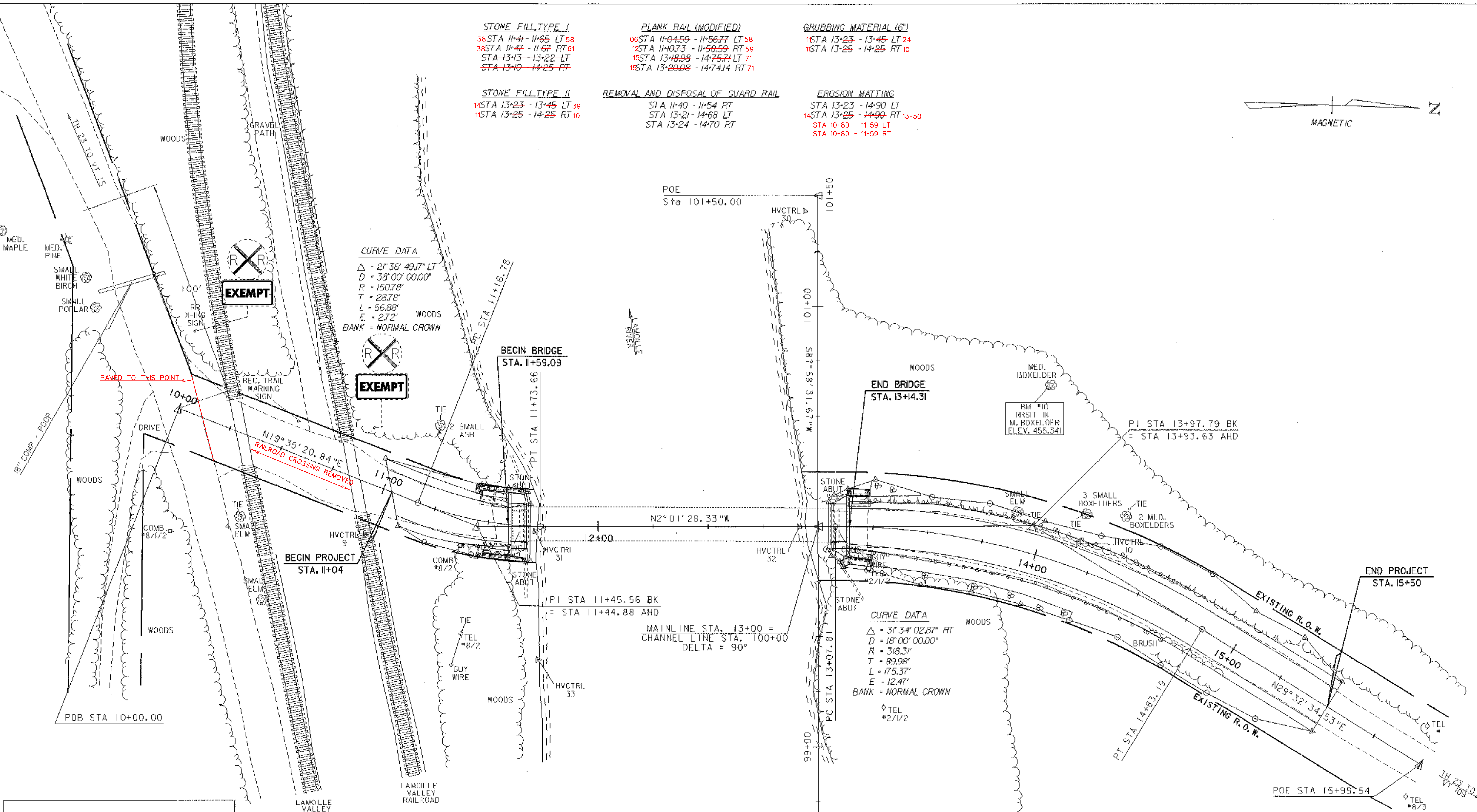
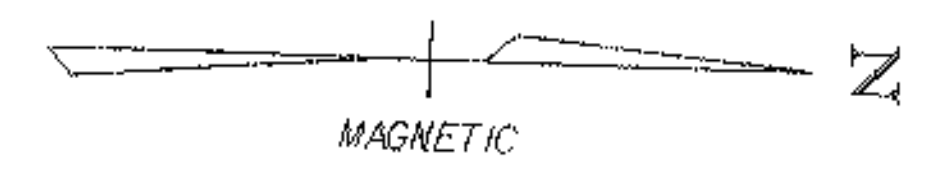
14 STA 13+23 - 14+90 LI
14 STA 13+25 - 14+90 RT 13+50
54 STA 10+80 - 11+59 LT
54 STA 10+80 - 11+59 RT

CURVE DATA

$\Delta = 21^{\circ} 36' 49.17''$ LT
 $D = 38^{\circ} 00' 00.00''$
 $R = 150.78'$
 $T = 28.78'$
 $L = 56.88'$
 $E = 2.72'$
WOODS
BANK = NORMAL CROWN

CURVE DATA

$\Delta = 31^{\circ} 34' 02.87''$ RT
 $D = 18^{\circ} 00' 00.00''$
 $R = 318.31'$
 $T = 89.98'$
 $L = 175.37'$
 $E = 12.47'$
BANK = NORMAL CROWN
TEL #2/1/2



LINES SHOWN ON THIS PLAN AS EXISTING PROPERTY LINES P/L ARE BELIEVED TO BE ACCURATE BUT SHOULD NOT BE RELIED UPON FOR PURPOSES UNRELATED TO THE TOWN OF CAMBRIDGE'S ACQUISITION OF LAND AND RIGHTS FOR THIS PROJECT.

LAYOUT SHEET

PROJECT NAME:	CAMBRIDGE	PLOT DATE:	07-AUG-2002
PROJECT NUMBER:	BHO 1448(31) C/2	DRAWN BY:	R. PELLETT
FILE NAME:	/00j244/str/sj244bdr.dgn	CHECKED BY:	M. GAGULIC
PROJECT LEADER:	D. HOYNE	SHEET	7 OF 62
DESIGNED BY:	M. FOWLER		
	sj244ldt		

