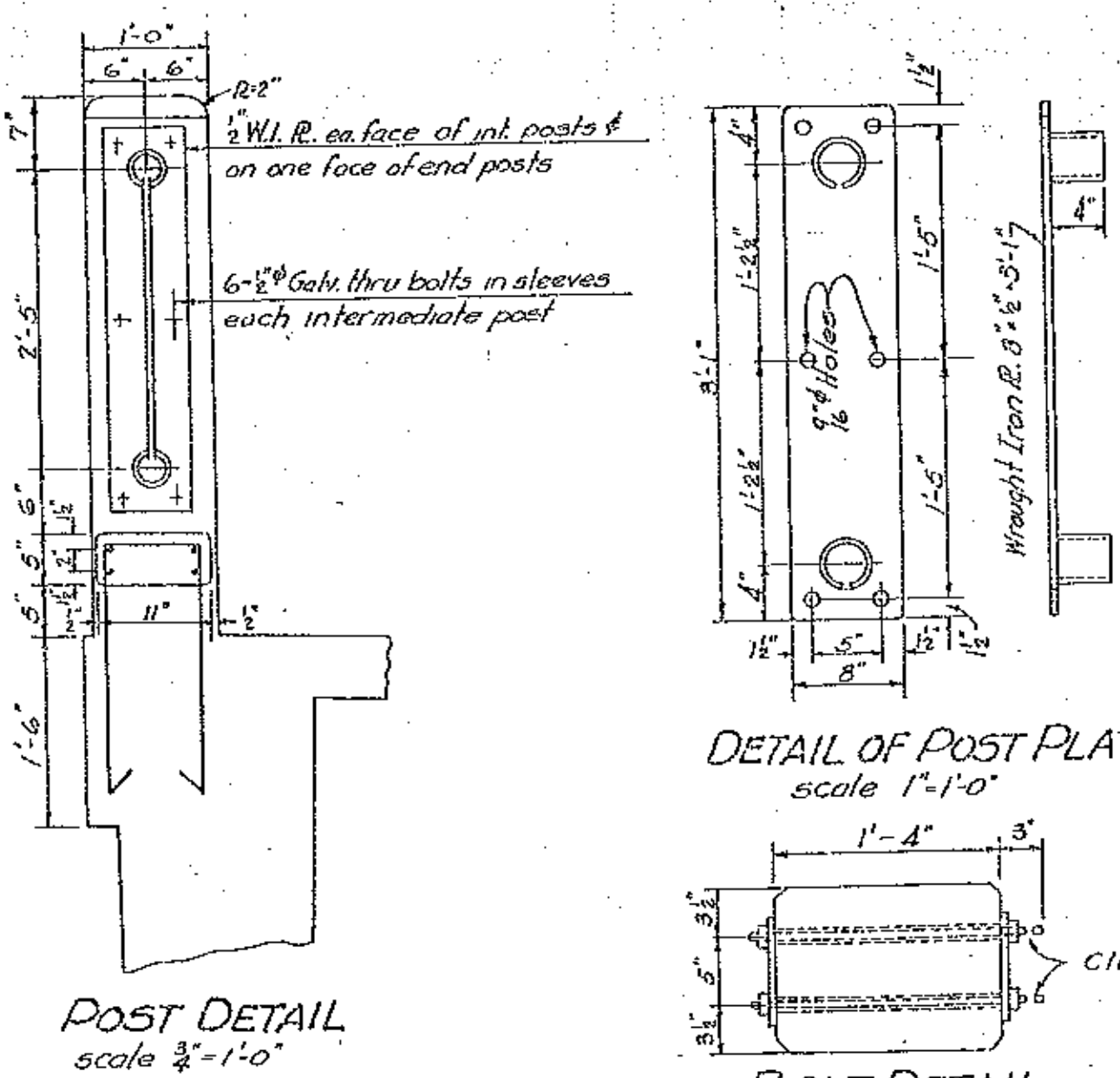
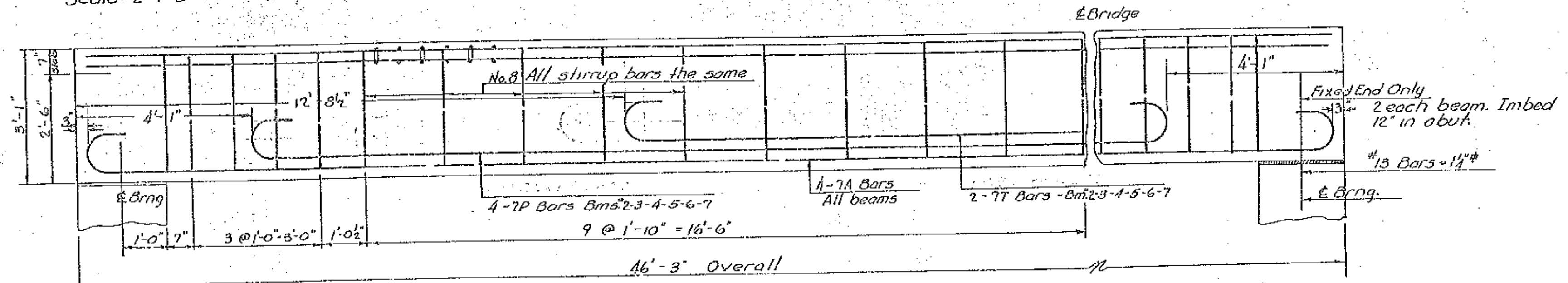


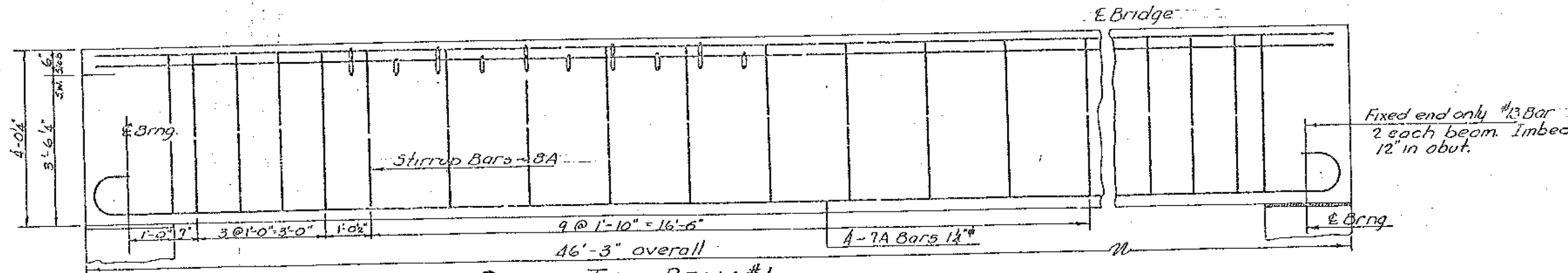
SECTION
scale 1/2"=1'-0"



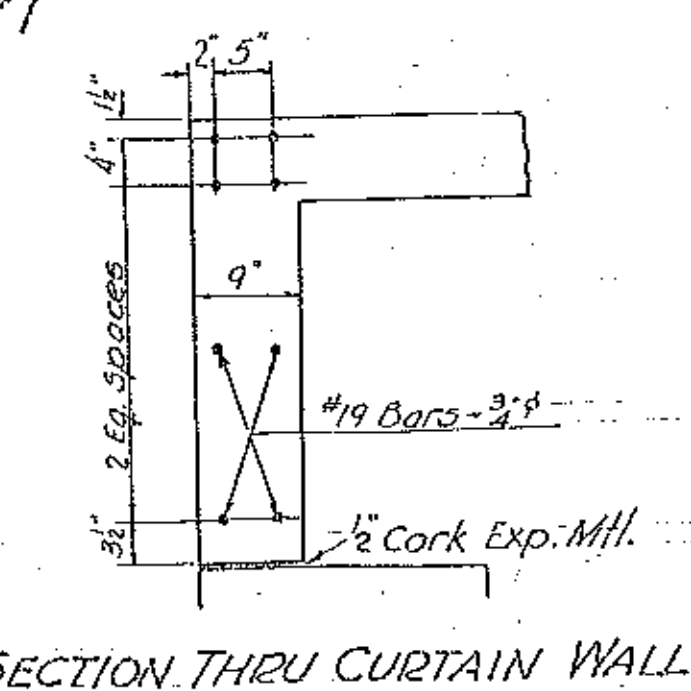
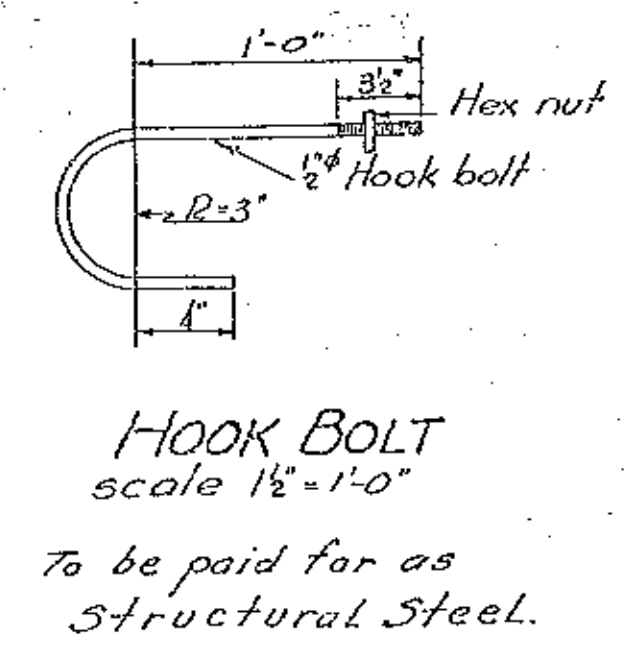
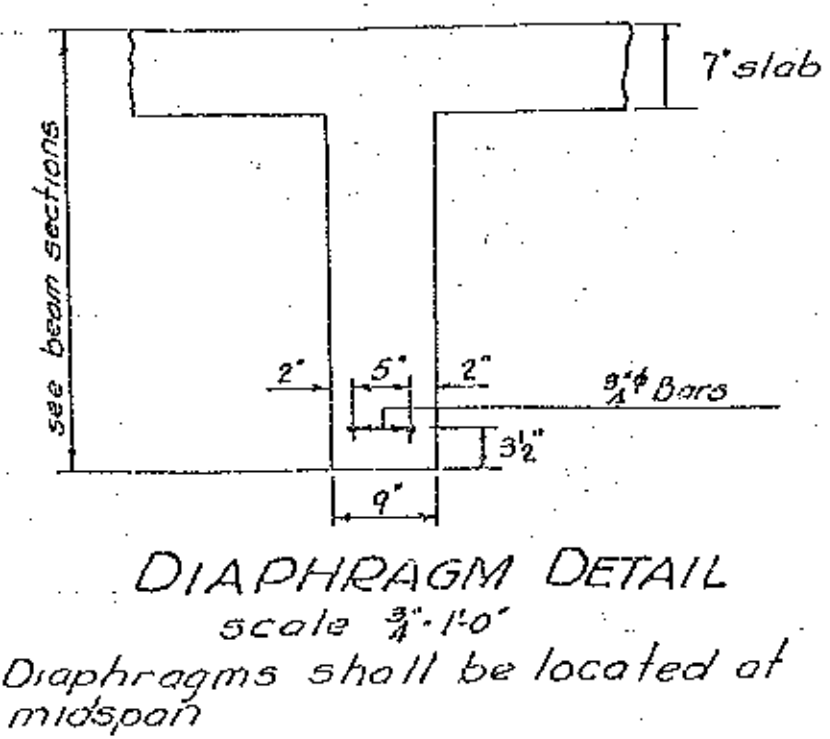
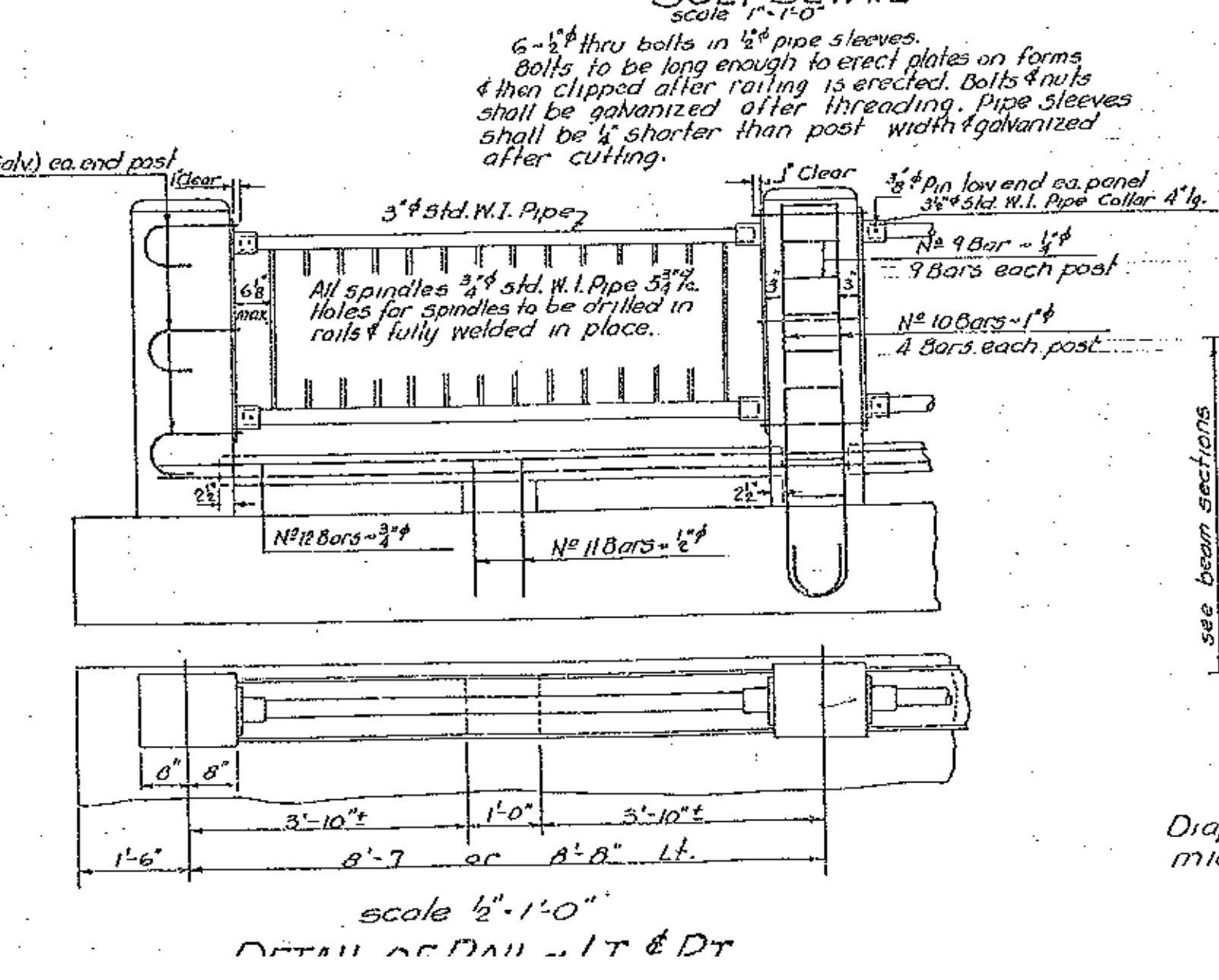
NOTE:
Collar 3/4" std. pipe x 4" long, weld to plate with 1/2" continuous fillet weld inside & outside. Collar to be split & spread to form an inside dia. of 3 1/2".
Plate & collars shall be galvanized after assembly in accordance with Item #51, Standard Road & Bridge Specs., Vt. Dept. of Highways.



LONGITUDINAL SECTION THRU BEAMS #2-3-4-5-6-7
scale 1/2"=1'-0"



LONGITUDINAL SECTION THRU BEAM #1
scale 1/2"=1'-0"



SECTION THRU CURTAIN WALL

ESTIMATED QUANTITIES

BARTON
ORLEANS VILLAGE BRIDGE
S.A. 29-1946
scale as noted

Surveyed by
Designed by L.M.B.
Drawn by H.W.S.
Traced by H.W.S.
Checked by J.L.H.
Series SA. No. 29-1946 Filed
Sheet 3 of 10 Sheets