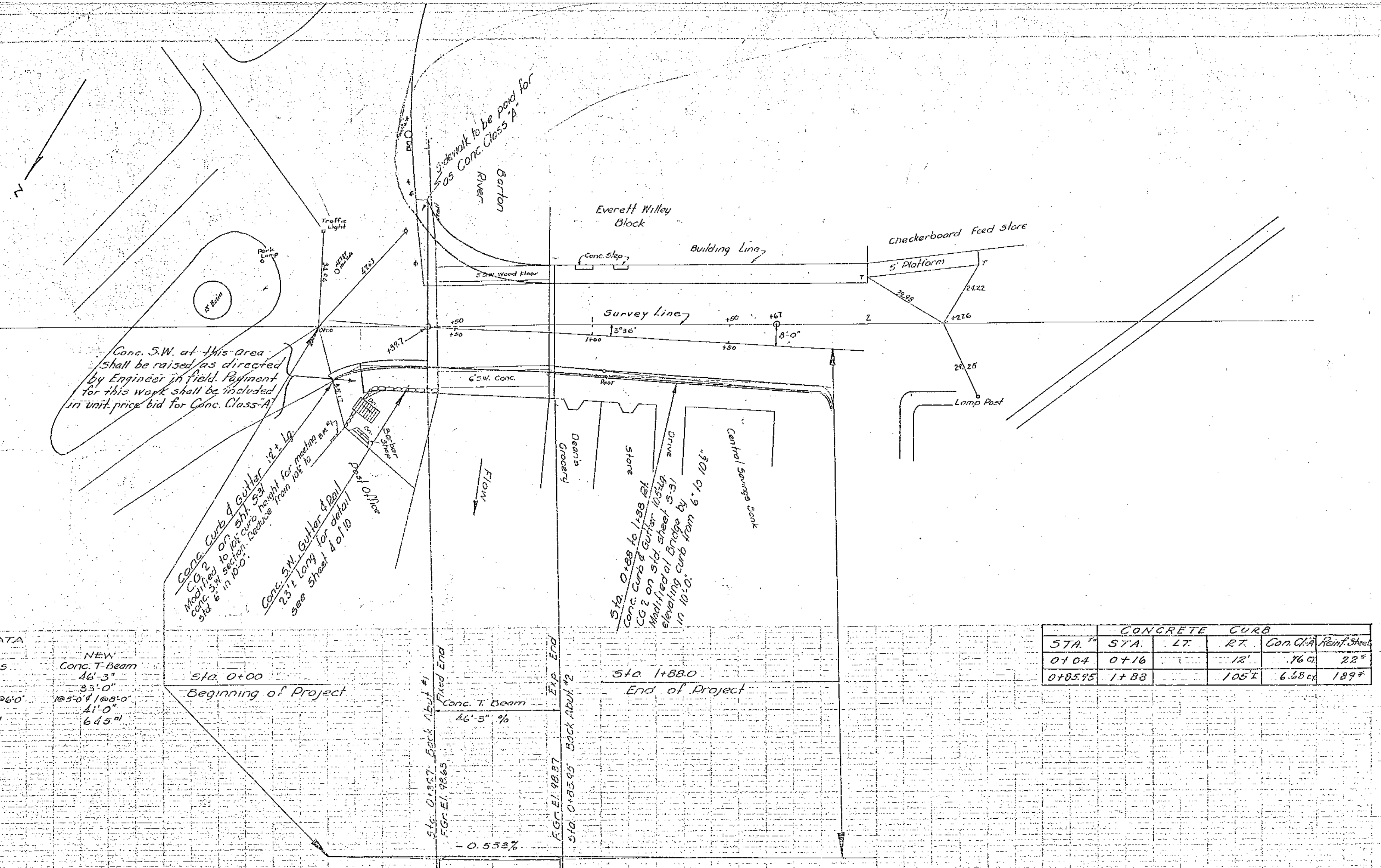


- LIST OF SHEETS**
- 1 Plan & Profile
  - 2 Plan of Bridge
  - 3 Section of Bridge & Details
  - 4 Rail Post Spacing & Approach Rail Details
  - 5 Details Abut #1
  - 6 " #2
  - 7 Std. Structure Sheet - SB-20 - Details B-J-M - A
  - 8 " " SB-11 - Barricades, Lights, & Signs.
  - 9 " " S-31 - curb & gutter
  - 10 Cross Sections

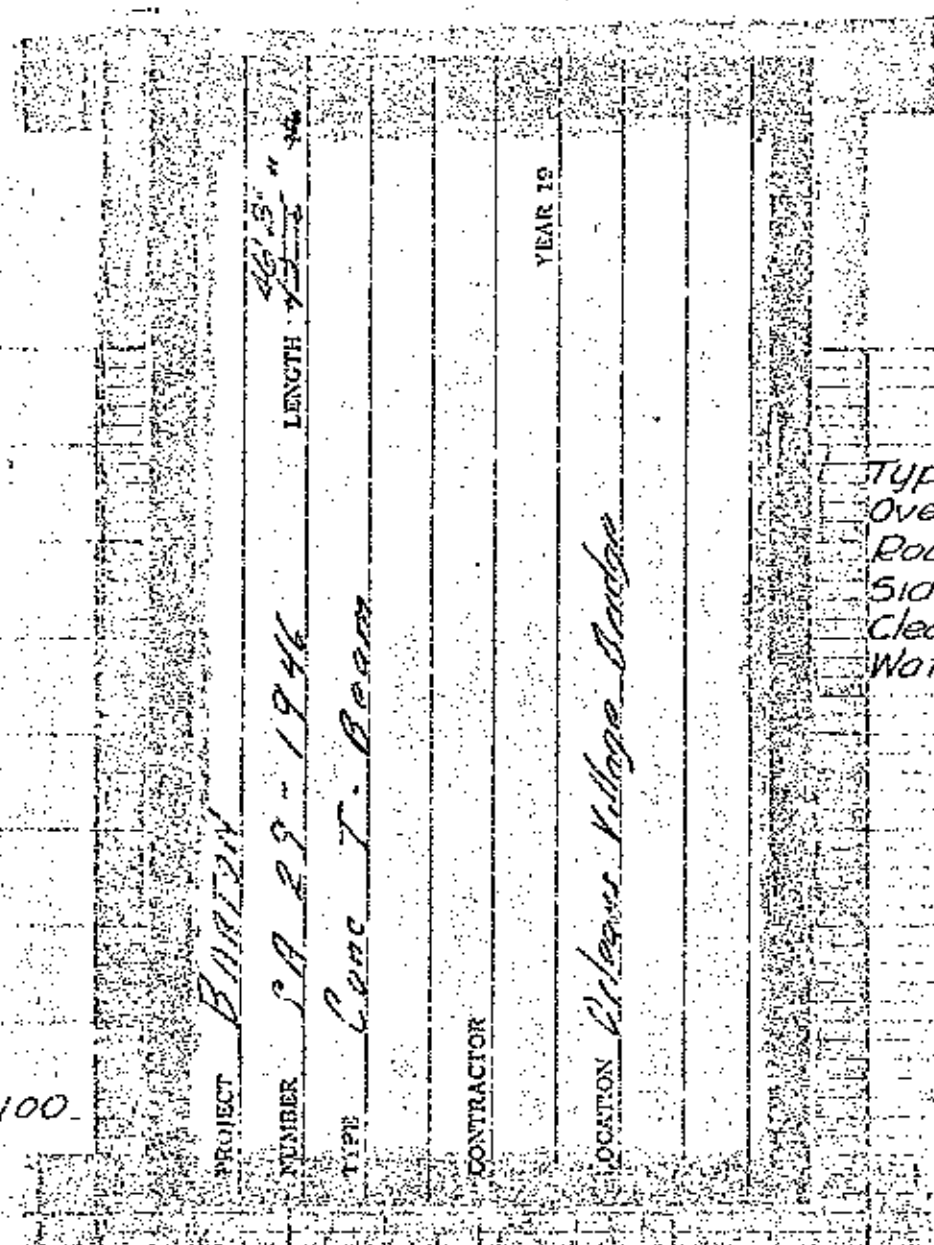


**BRIDGE DATA**

Type	OLD	NEW
Overall	Pony Truss	Conc. T-Beam
Roadway Width	45'-0"	46'-3"
Sidewalks	29'-3"	35'-0"
Clear Span	185'-0" & 106'-0"	185'-0" & 106'-0"
Waterway	41'-0"	41'-0"
	655'	645'

**CONCRETE CURB**

STA.	STA.	LT.	RT.	Con. Cl.	Reinf. Steel
0+04	0+16		12'	16 CI	22"
0+85.95	1+88		105'	6.58 CI	189"



**LIST OF QUANTITIES.**

Item	Description	Quantity
10	Solid Rock Excav.	15 CY
10-11	Common Excav. inc. borrow	25 CY
16	Structure Excav.	146 CY
18-B	Tamp. Br. & Maint. of Traffic.	1 LS
190	Sub-base of Gravel.	20 CY
25	Crushed Gravel mixed in place surface course with refined tar.	33 CY
30	Refined Tar	730 Gal.
41A	Concrete Class A	183 CI
41C	" " " "	42 CI
42	Reinf. Steel	37,730 Lbs.
43A	Structural Steel	3,550 Lbs.
51	Removal of Present Superstr.	1 LS
94	Conduit. for Lighting System.	1 LS

Approved: July 22 1947  
G. A. Dea  
 District Highway Commissioner  
 Correct

Bridge Engineer  
 Approved: \_\_\_\_\_ 1947  
 Commissioner of Highways

**BARTON**  
**ORLEANS VILLAGE BRIDGE**  
 S.A. 29-1946

B.M. #1 Spot on step at Post Office. Elev 100.00

Exp & Fixed Ends Reversed  
 7/23/48  
Sm