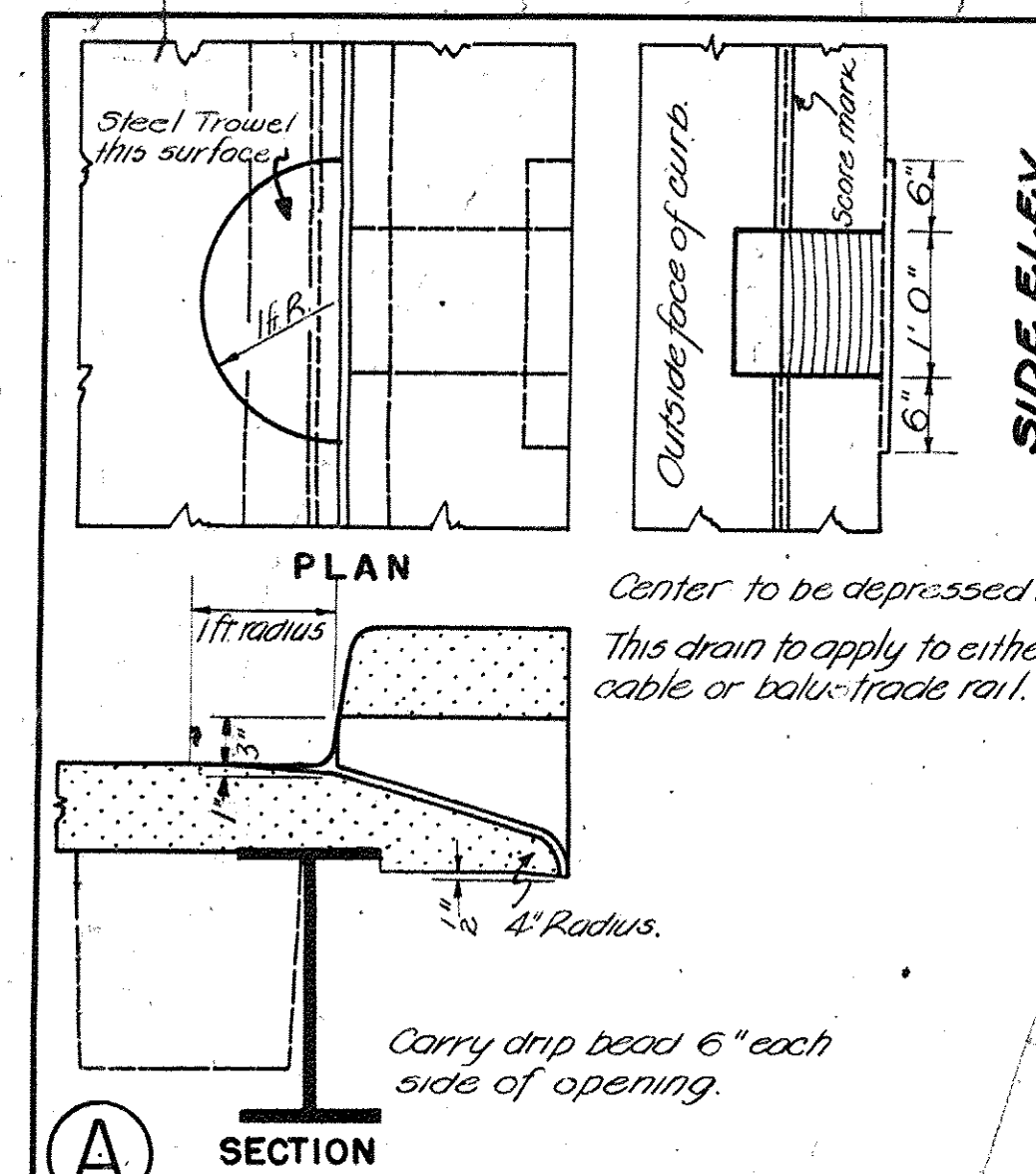
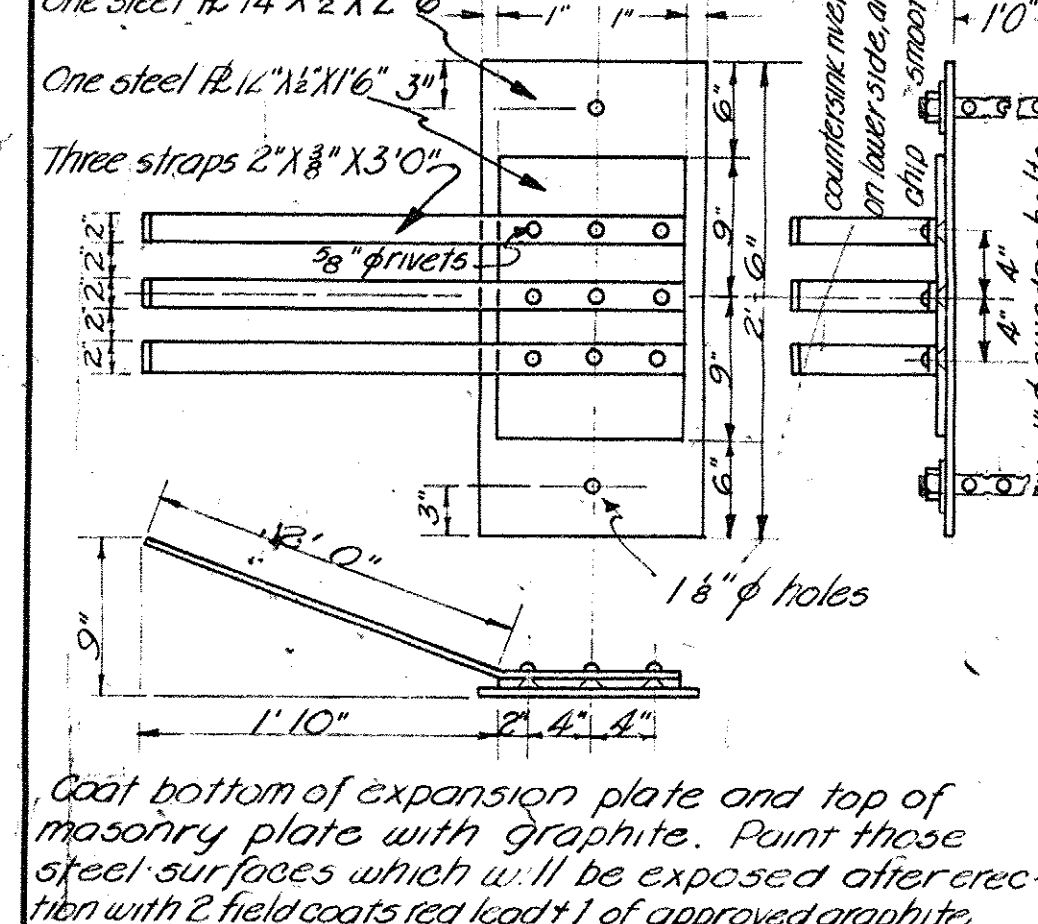


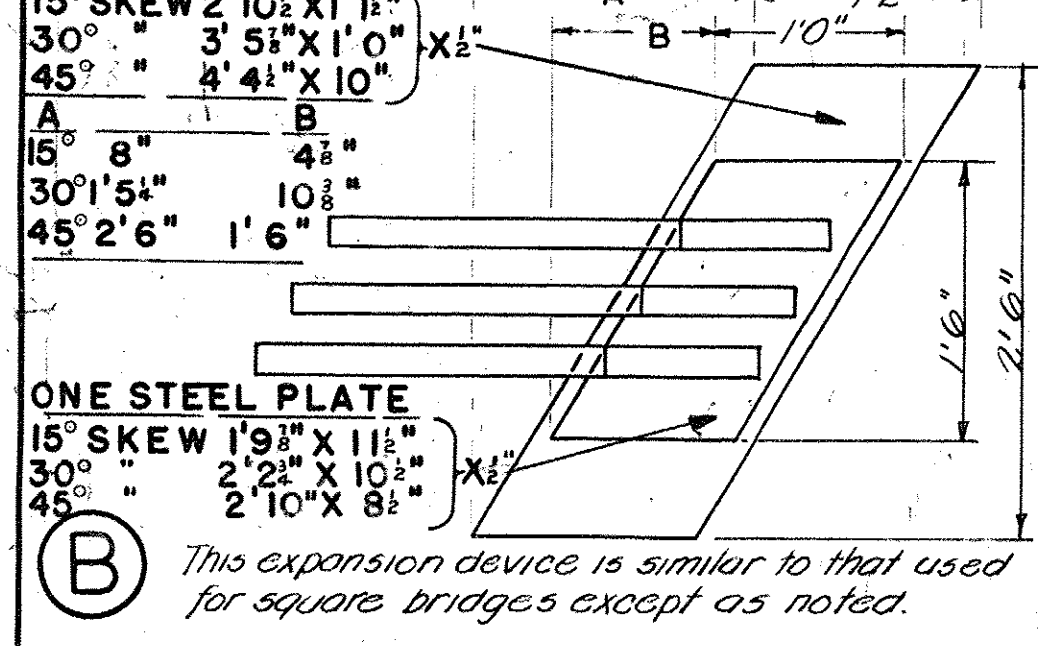
FED. ROAD DIST. NO.	STATE	FED. AID PROJ. NO.	FISCAL YEAR	SHEET NO.	TOTAL SHEETS
9	VT.				



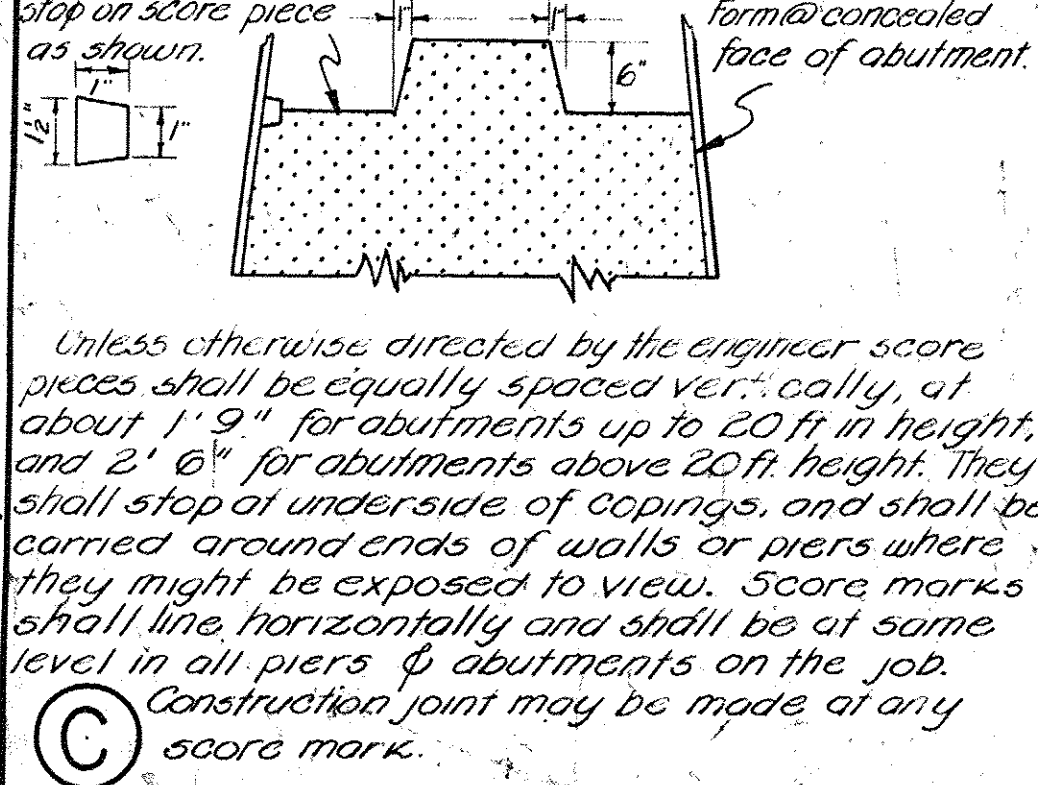
A DRAIN-DETAIL FOR T AND I BEAM BRIDGES



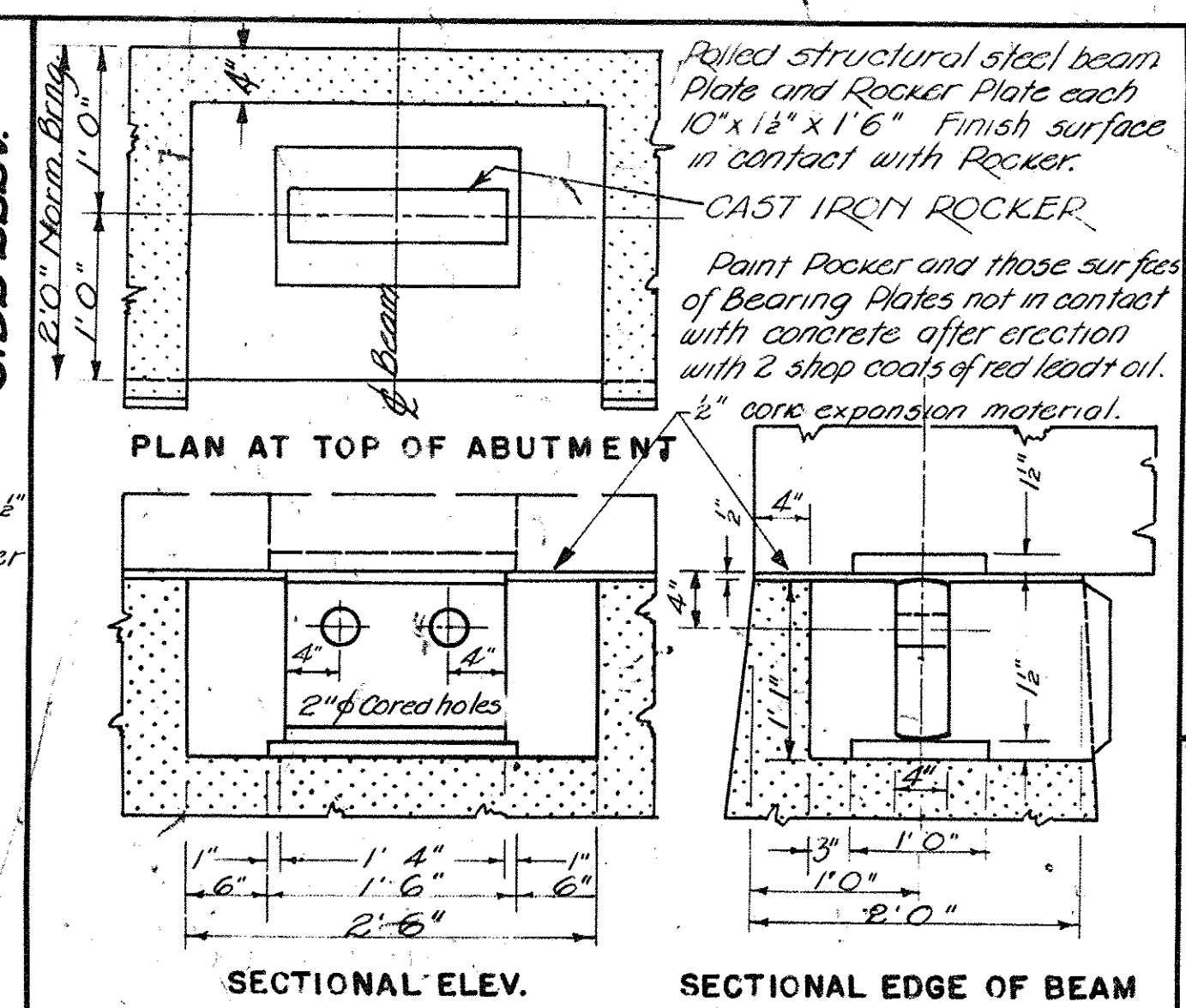
B SLIDING PLATE EXPANSION DEVICE FOR SQUARE SPAN T BEAM



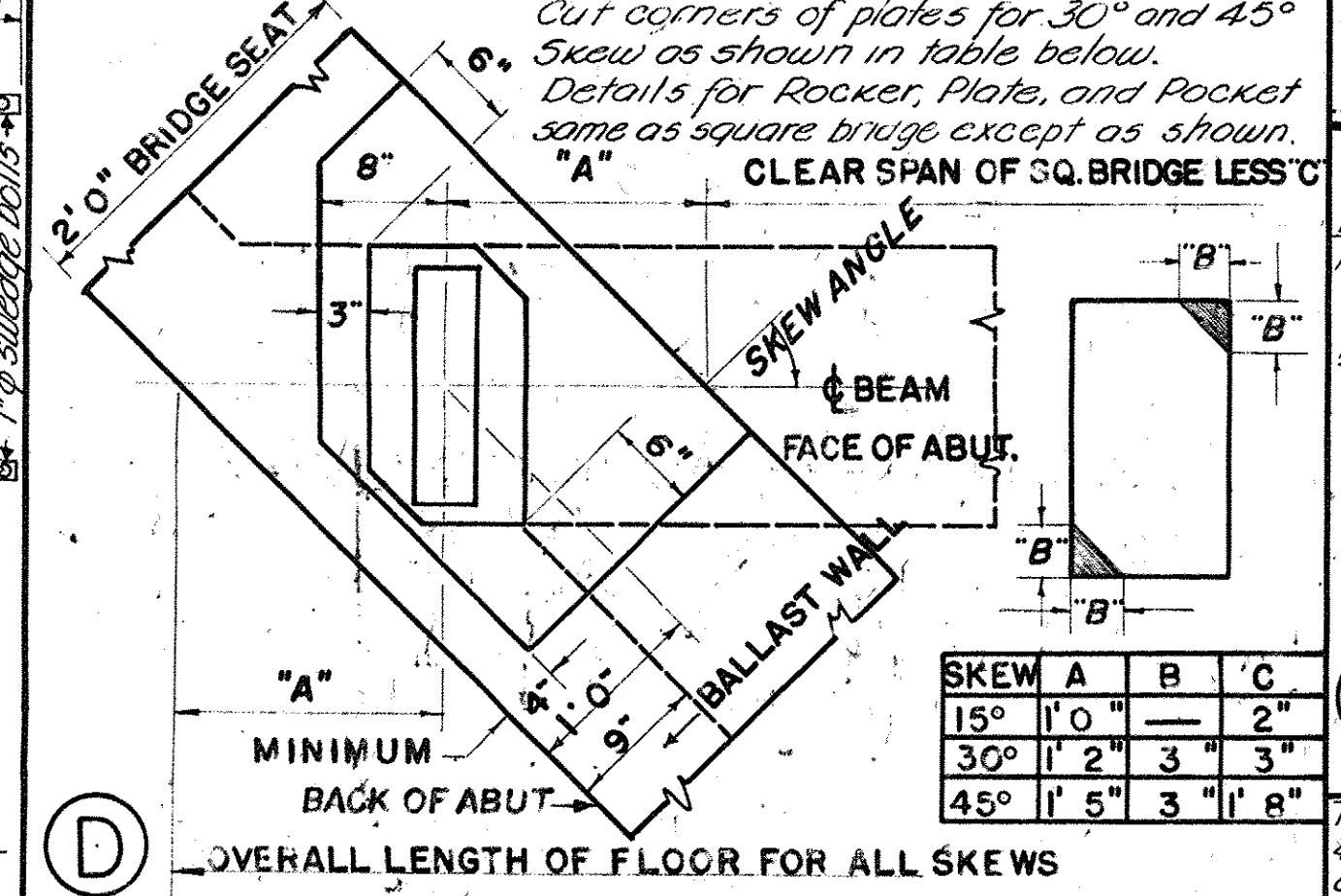
C SLIDING PLATE EXPANSION DEVICE FOR SKEW SPAN T BEAM



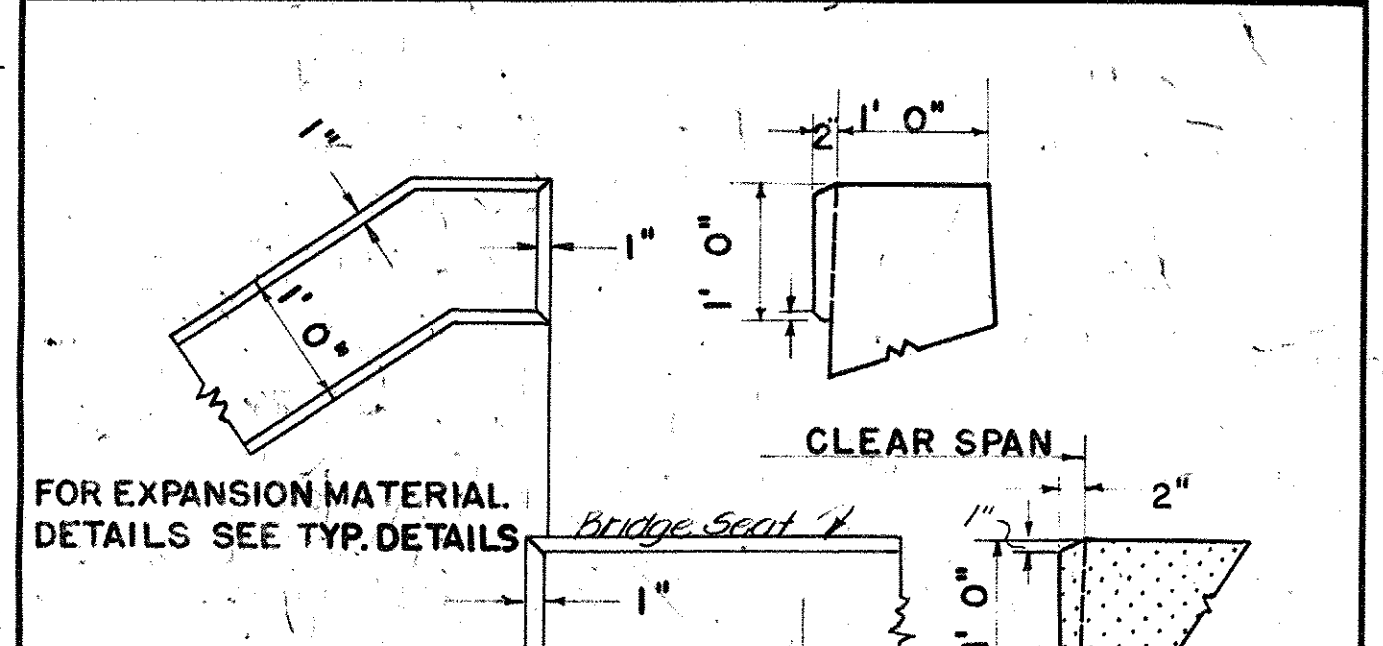
D TYPICAL COPINGS



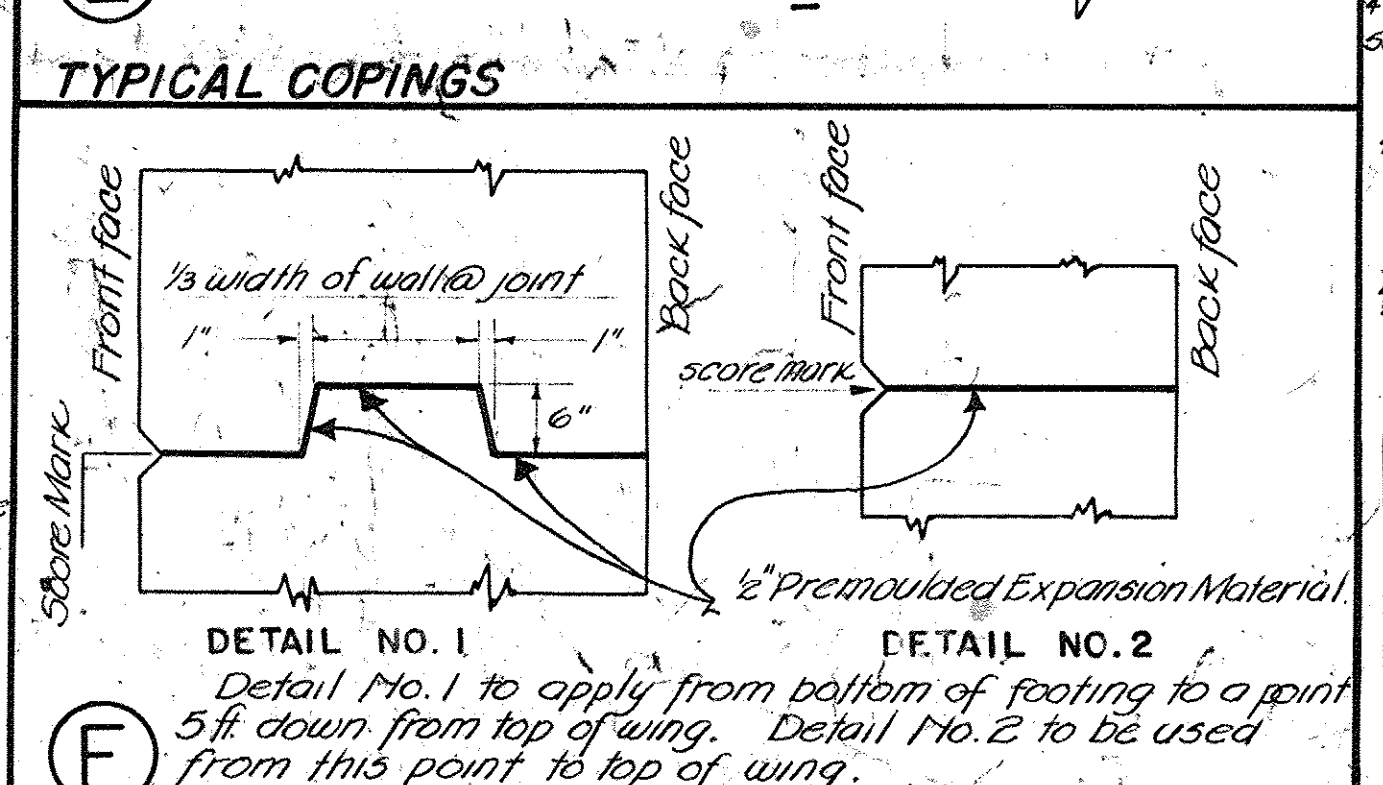
E ROCKER EXPANSION DEVICE & POCKET FOR T BEAM SPANS FOR SPECIAL CASES ONLY



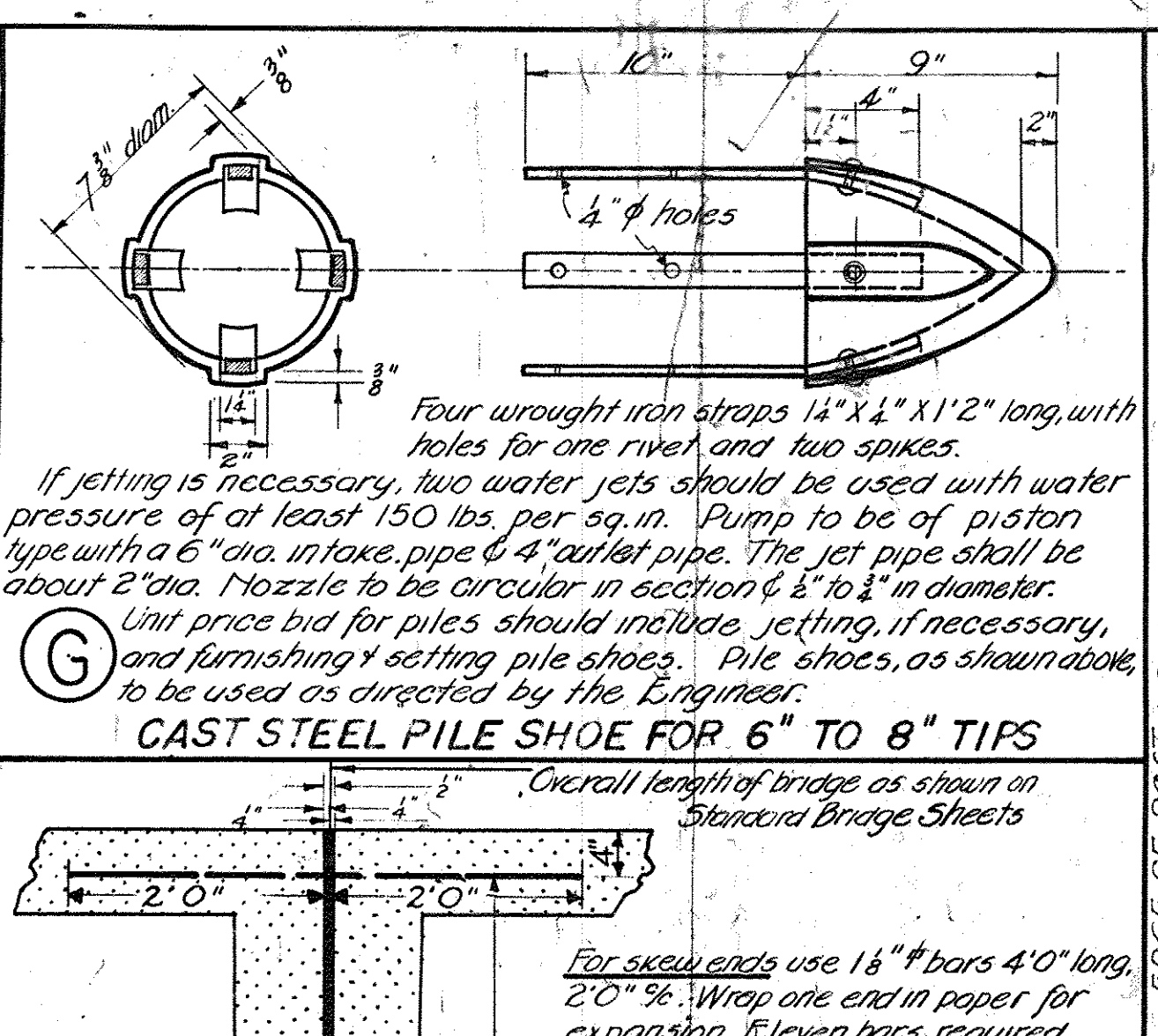
F ROCKER EXPANSION DEVICE & POCKET FOR SKEW SPAN T BEAM



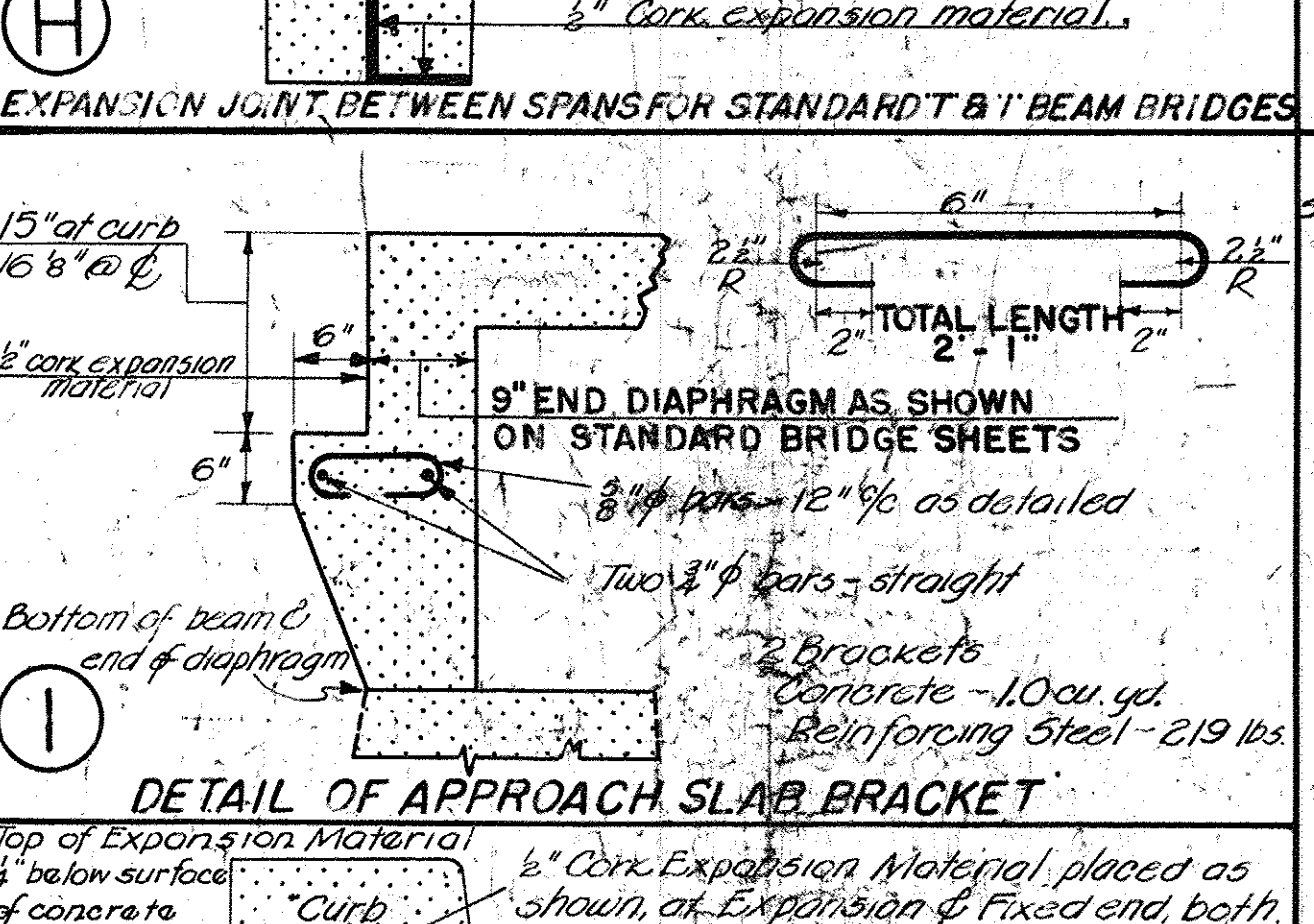
G DETAIL OF VERTICAL EXPANSION JOINT



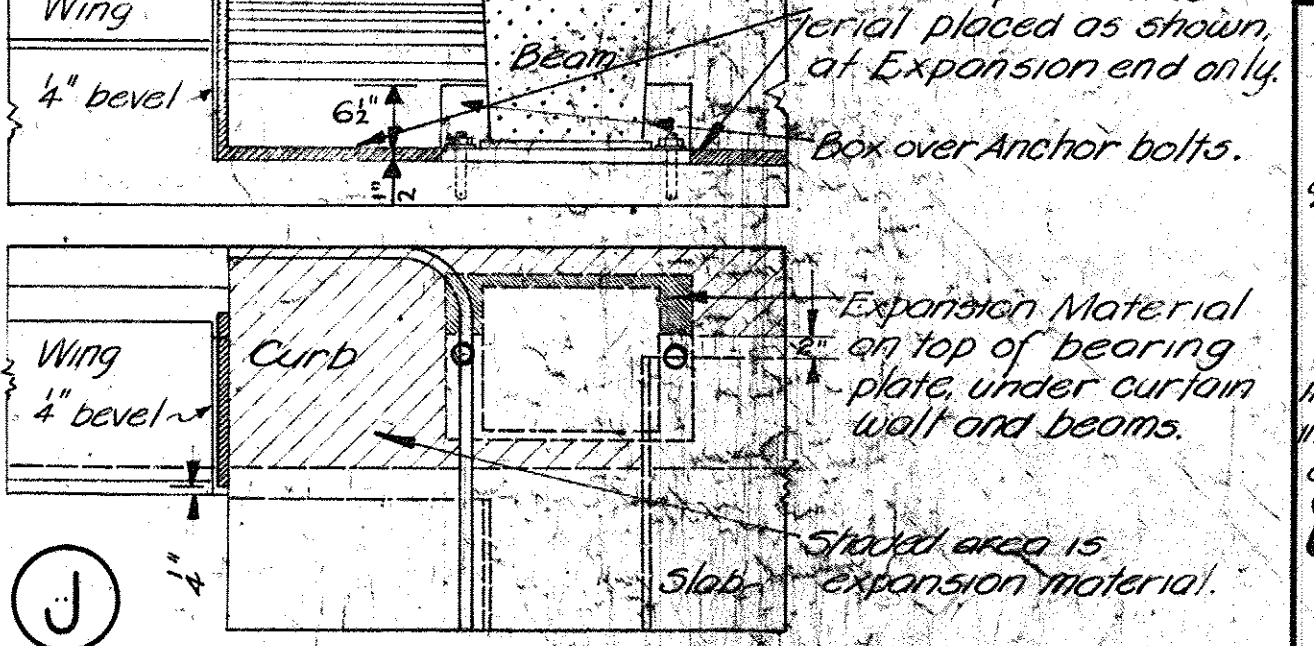
H DETAIL OF EXPANSION MATERIAL FOR T BEAM BRIDGES



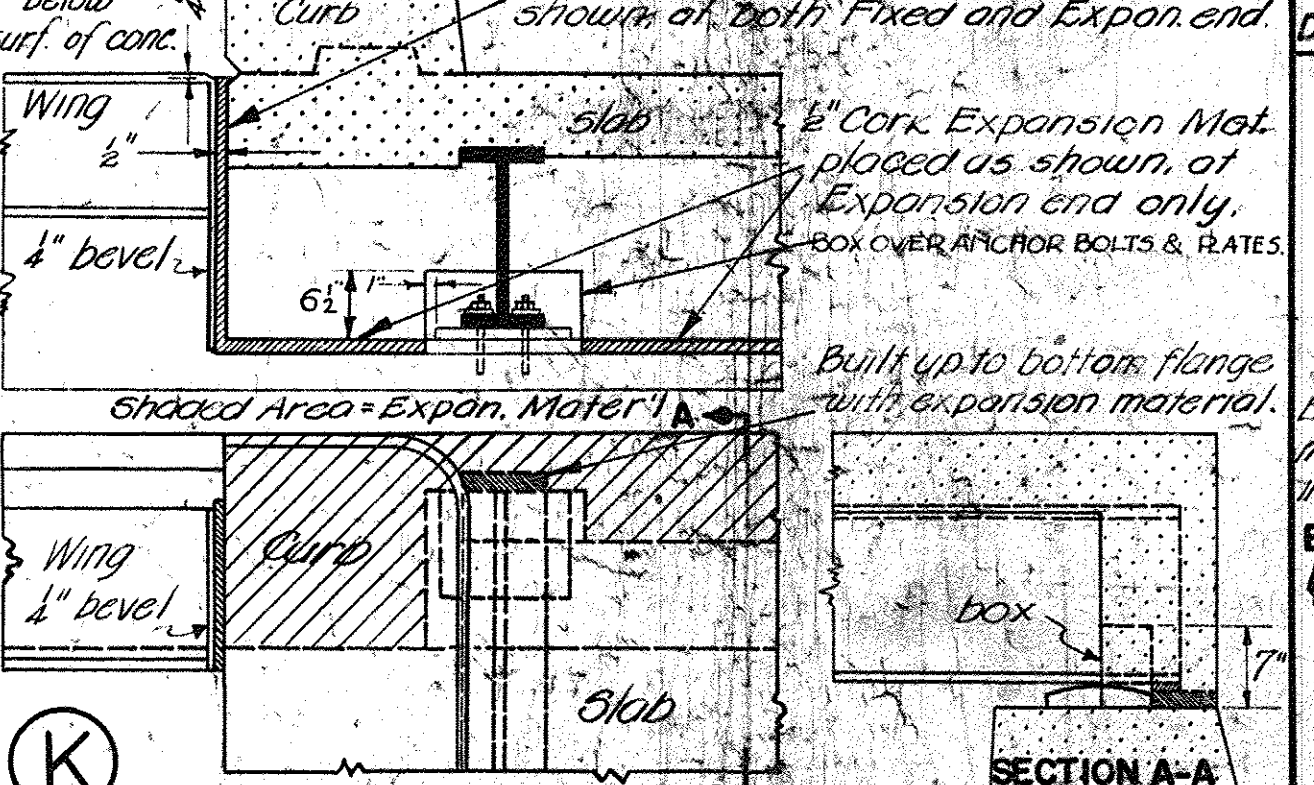
I CAST STEEL PILE SHOE FOR 6" TO 8" TIPS



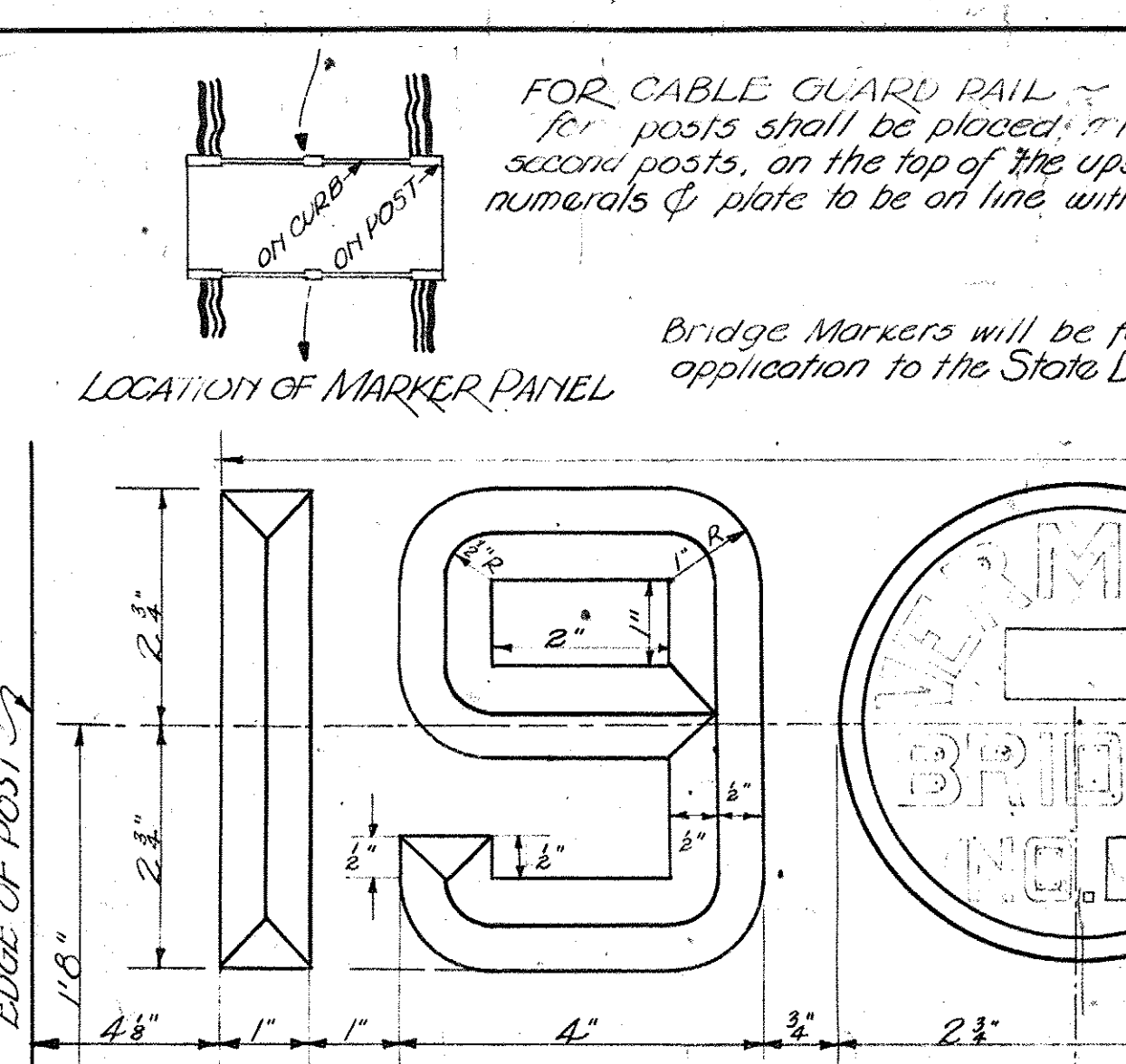
J DETAIL OF APPROACH SLAB BRACKET



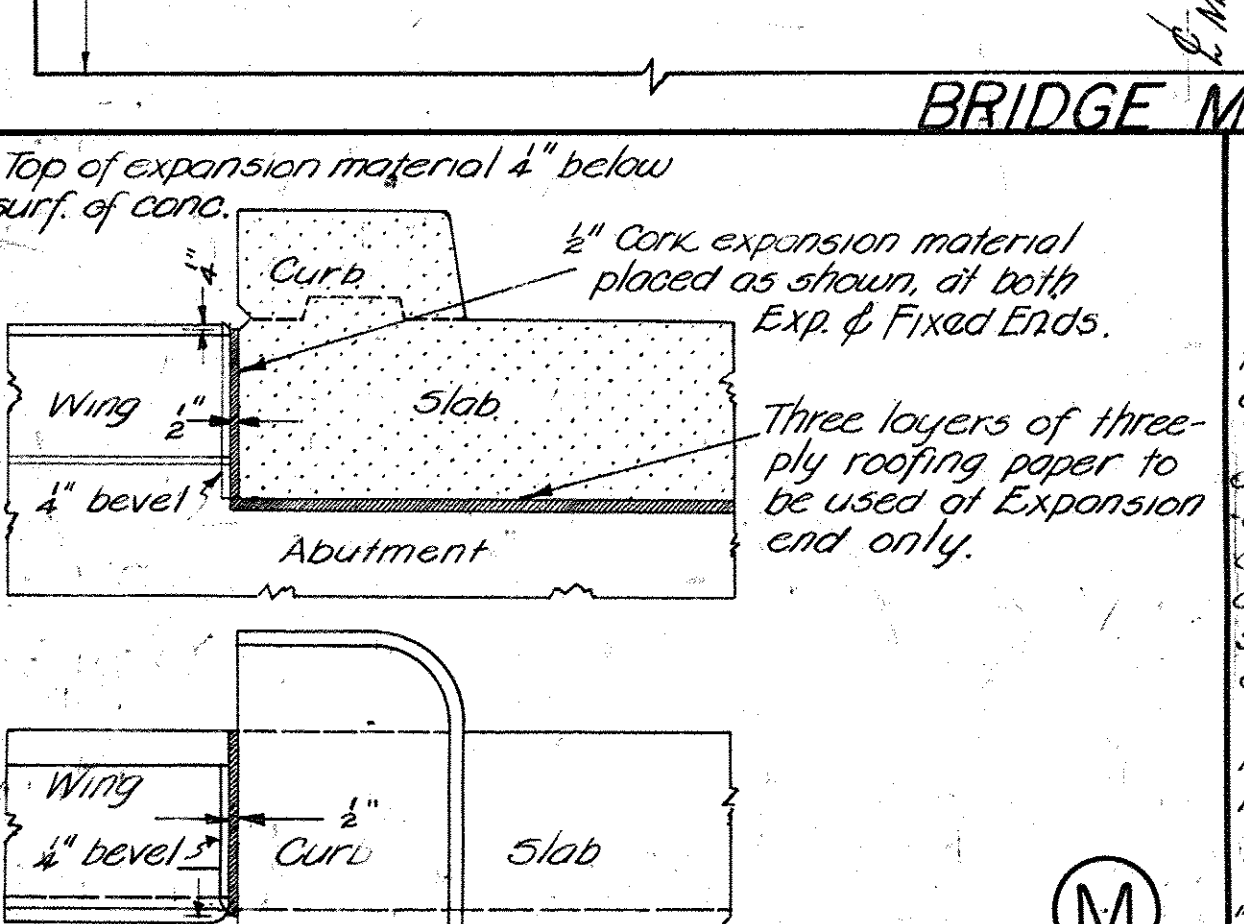
K DETAIL OF EXPANSION MATERIAL FOR I BEAM BRIDGES



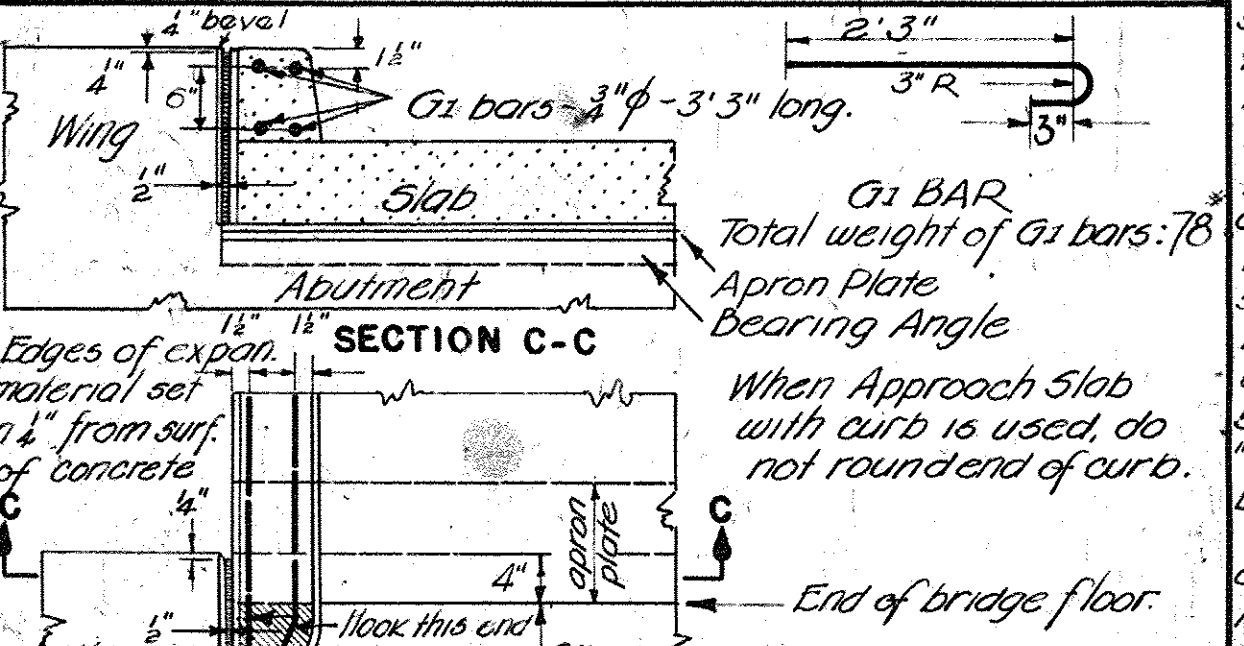
L DETAIL OF EXPANSION MATERIAL FOR STEEL BRIDGE-EXPAN. END



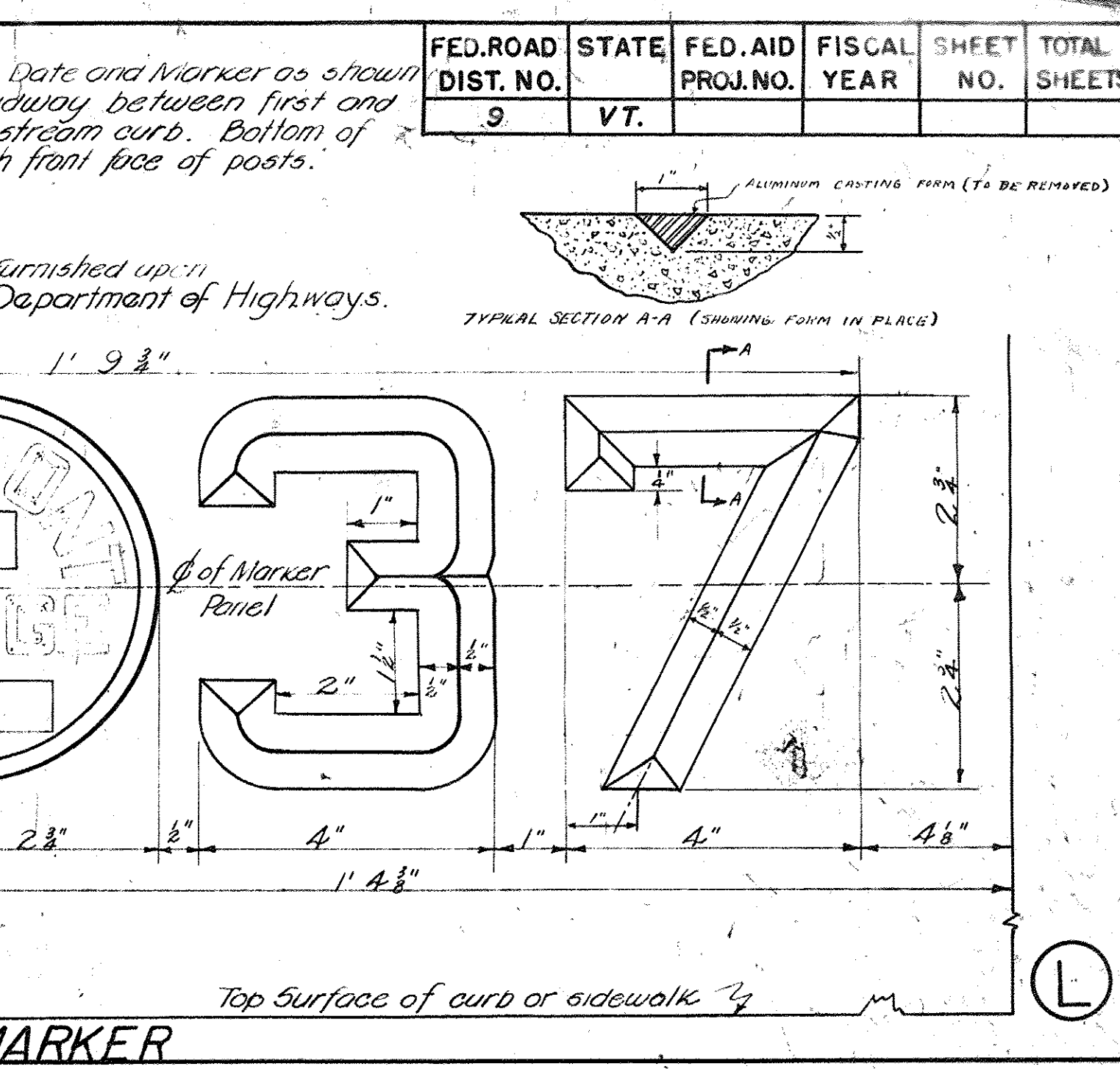
M BRIDGE MARKER



N DETAIL OF EXPANSION MATERIAL FOR SLAB BRIDGES



O DETAIL OF CURB & EXPANSION MATERIAL FOR STEEL BRIDGE-EXPAN. END



P TYPICAL SECTION A-A (SHOWING FORM IN PLACE)

GENERAL NOTES

The following notes shall govern the structures and details to which they apply. All work and material shall conform to the Standard Road and Bridge Specifications of the Vermont Department of Highways. Any suitable structure excavation used by the Contractor for any purpose other than backfill or approach fill shall be replaced by an equivalent quantity of borrow by the Contractor at his expense unless some 15 ordered wasted by the Engineer. Piles shall be provided where suitable foundation can not be obtained within a reasonable depth. They shall be spaced not closer than 2' 6" % excepting as noted on plans or as directed by the Engineer. Where necessary, use detail G above. Foundations on ledge should be sloped toward the back of the footing about 1" per foot. Footings shown on plans for other conditions may be revised at the direction of the Engineer. All concrete for piers and gravity abutments shall be "Concrete Class C" unless otherwise directed or noted. All concrete for reinforced abutments shall be "Concrete Class B" unless otherwise noted or directed. All concrete for T beam, I beam, and Slab bridges, and for curbs and rails shall be "Concrete Class A", and shall be paid for at the unit price bid for "Concrete Class A". All reinforcing steel for bridges and abutments shall be deformed bars, excepting as noted, and they shall conform to the standard specifications for new billet steel concrete reinforcement bars, Structural or Intermediate grade, of the American Society for Testing Materials, Serial designation A15-33. 4" weep holes shall be provided in main abutment and wings. They shall be spaced symmetrically about the abutment at maximum spacing of 10 ft. % They shall be pitched 1" per foot - upward from front to back; the lower end of the weep hole shall be 2' 6" above the footing. The cost of work and material for weep holes shall be included in the unit price bid for concrete. The cork expansion material between superstructure and substructure at expansion and at fixed end shall be included and paid for in price bid for "Concrete Class A". All work and material for expansion devices to be included in and paid for as the unit price bid for "Reinforcing Steel" for T beam bridge. All exposed edges shall be chamfered, those chamfers of chamfer to be 1". Where pipes (existing or required) pass through abutments they shall be of materials and in locations directed by the Engineer. Cost of work and materials for such work to be included in and paid for at unit price for Abutment concrete. Where pipes are carried by superstructure they shall be supported as directed by the Engineer. The cost of all work and materials shall be paid for at the unit price bid for Superstructure Reinforcing Steel.

STATE OF VERMONT
DEPARTMENT OF HIGHWAYS
TYPICAL DETAILS
CORRECT *A.D. Bishop* BRIDGE ENGINEER
DESIGNED DRAWN D.W.P. 1934
RETRACED R.E.G. OCT. 1936 CHECKED W.G.B. JAN. 1937
SERIES SB NO. 20 SHEET OF SHEETS