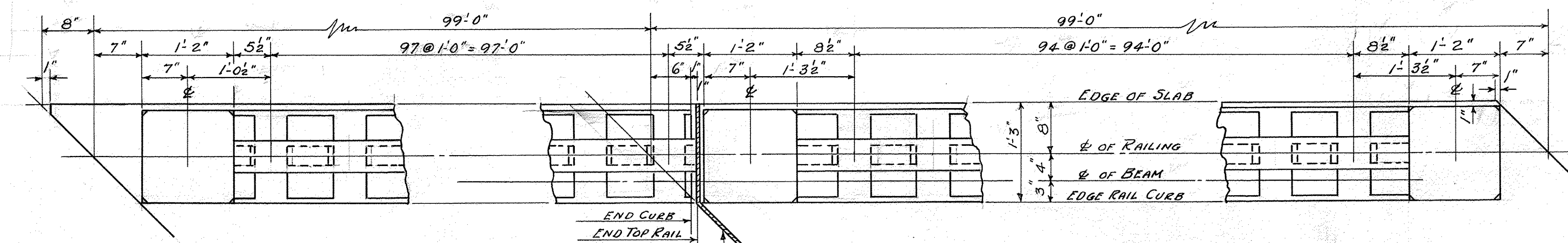


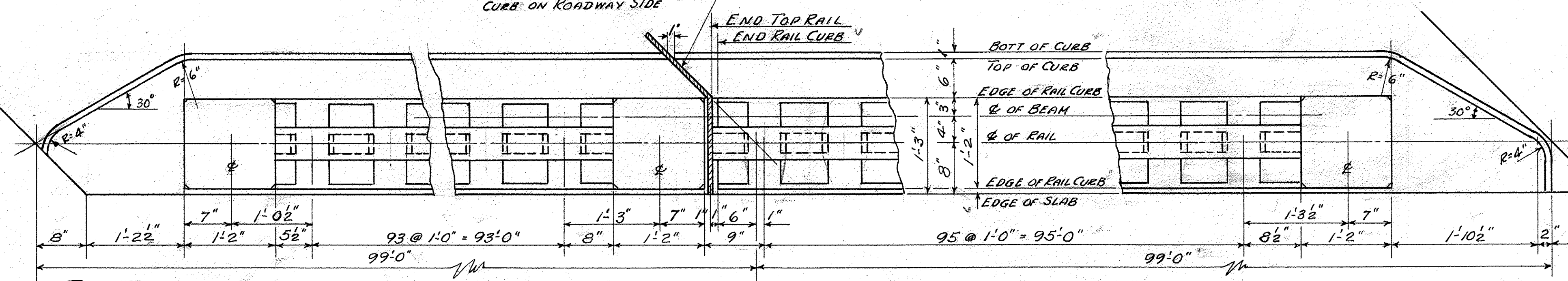
PLAN  
SHOWING LAYOUT OF RAILING AND DRAINS  
SCALE 1" = 10'-0"



PLAN DETAIL AT A

PLAN DETAIL AT B

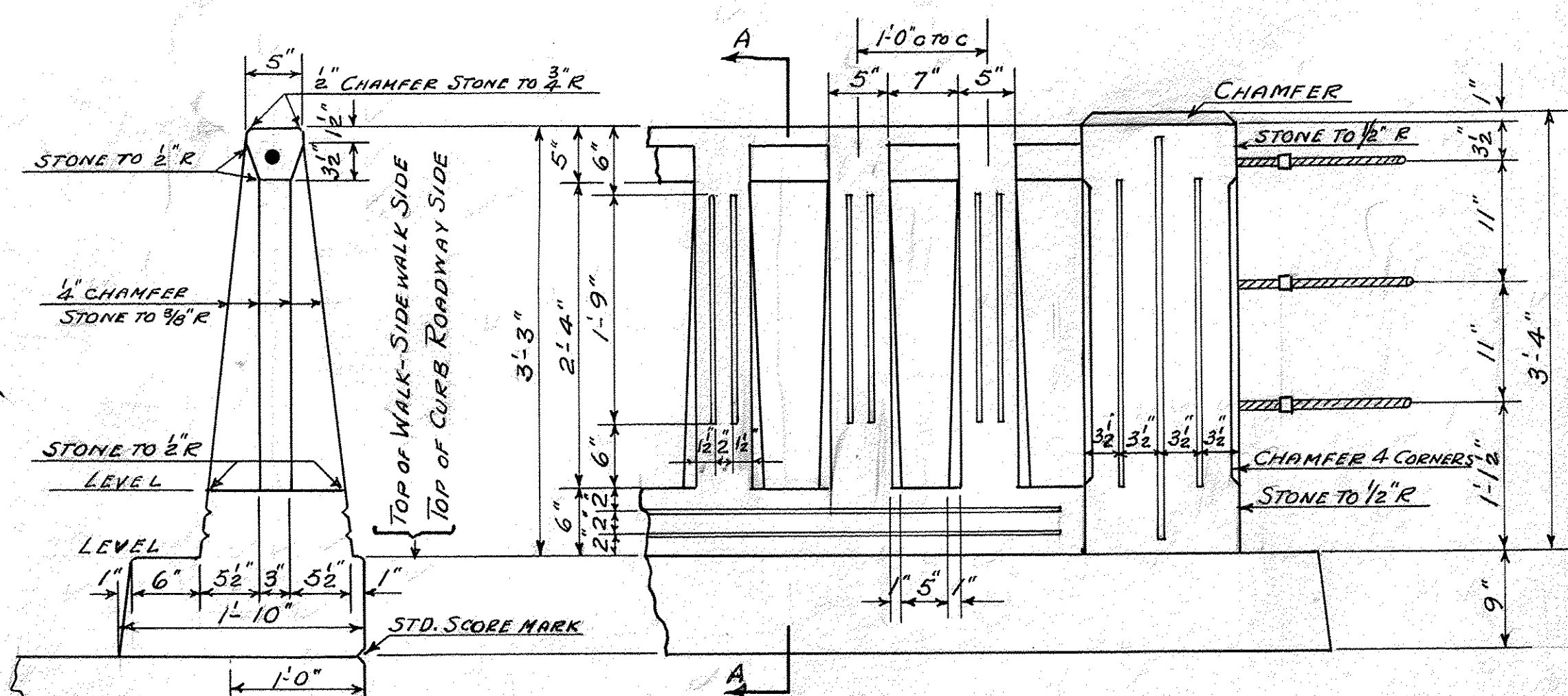
PLAN DETAIL AT C



PLAN DETAIL AT D

PLAN DETAIL AT E

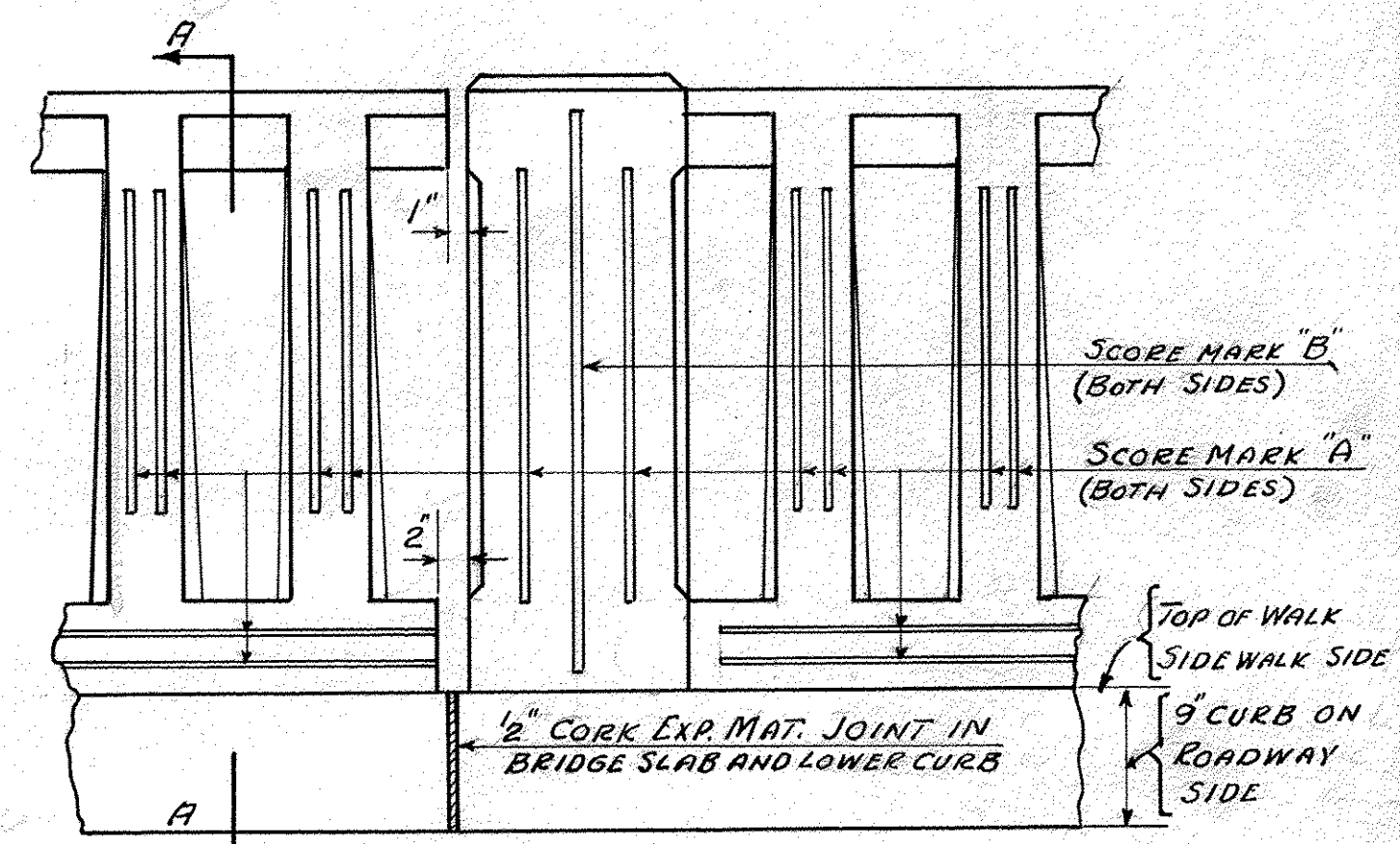
PLAN DETAIL AT F



SECTION A-A

INSIDE ELEVATION AT END POSTS  
TYPICAL FOR POINTS A-C-D-F  
SCORE MARKS AS SHOWN BELOW

DETAIL OF SCORE MARKS



INSIDE ELEVATION OVER PIER  
DETAIL AT E SHOWN SIMILAR AT B  
FOR DIMENSIONS NOT GIVEN SEE PLAN DETAILS AND ELEVATION ABOVE.

RAILING AND DRAINAGE DETAILS  
MARKET BRIDGE  
TUNBRIDGE  
SCALE 1" = 1'-0" EXCEPT NOTED.

REINFORCING STEEL				
BAR SIZE	REQD.	T.L.	DETAIL	
R1 5"φ	8	200	5'-0"	
R2 5"φ	32	263		STRAIGHT
R3 3"φ	4	384	6'-3"	
R4 3"φ	4	24	4'-6"	
R5 3"φ	4	20	19'-8"	STRAIGHT-CUT TO FIT AS NECESSARY

NOTES:-

PAYMENT FOR BALUSTRADE RAIL SHALL INCLUDE:- CABLE FASTENERS AT END POSTS; CONCRETE CLASS A-1 FOR LIGHT POSTS, BALUSTERS, AND TOP RAIL; CONCRETE CLASS A FOR RAIL CURB; RAIL STEEL (BARS R3-R4-R5); AND ALL LABOR AND OTHER MATERIALS INCIDENTAL TO THE INSTALLATION OF SAME.

QUANTITIES FOR CURB CONCRETE AND REINFORCING SHALL BE PAID FOR AT THE UNIT PRICE BID FOR CONCRETE CLASS A AND REINFORCING STEEL.

DRAINS TO BE INSTALLED AS INDICATED.

WEIGHT OF RAIL AND POSTS (WITHOUT CURB) ABT. 187 LBS. ABT. 200 LBS.

WEIGHT OF CURB

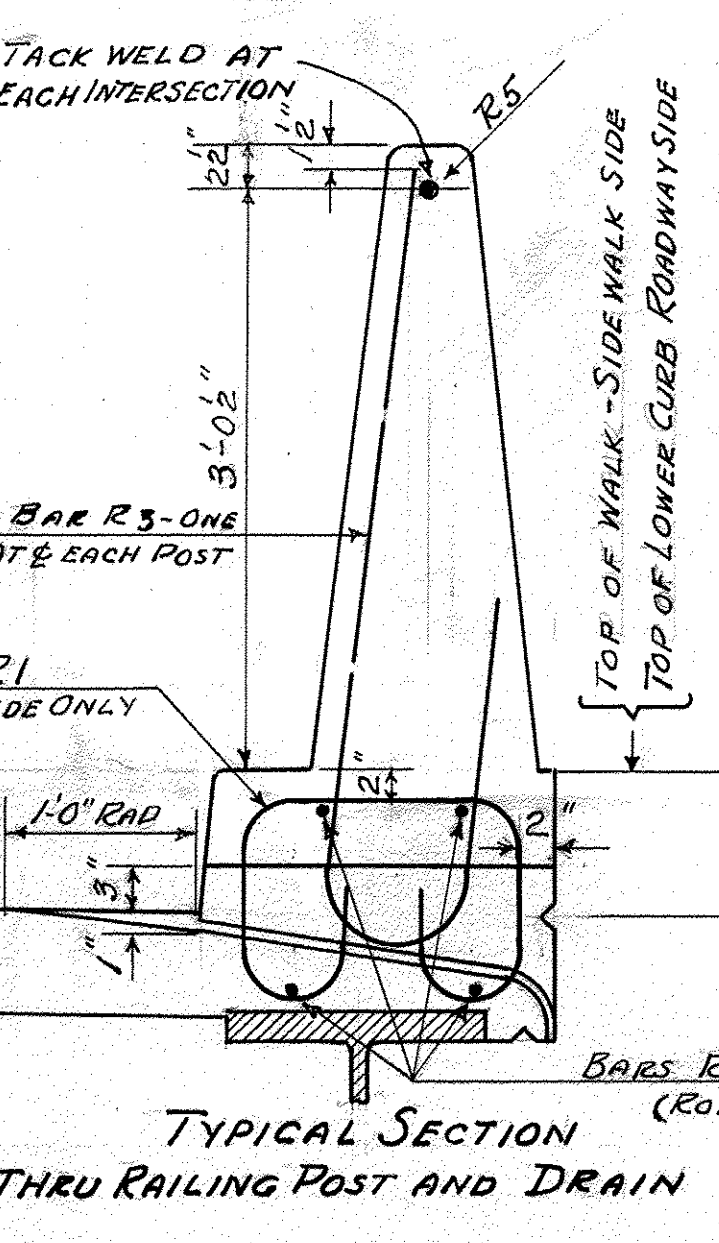
DRAINS ON ROADWAY SIDE 9" WIDE. DRAINS ON SIDEWALK SIDE TO BE INSTALLED AT EDGE OF ROADWAY UNDER SIDEWALK SLAB, EACH 10" WIDE

ALL DRAINS SIMILAR TO STD. DETAIL A ON SHEET SB 20

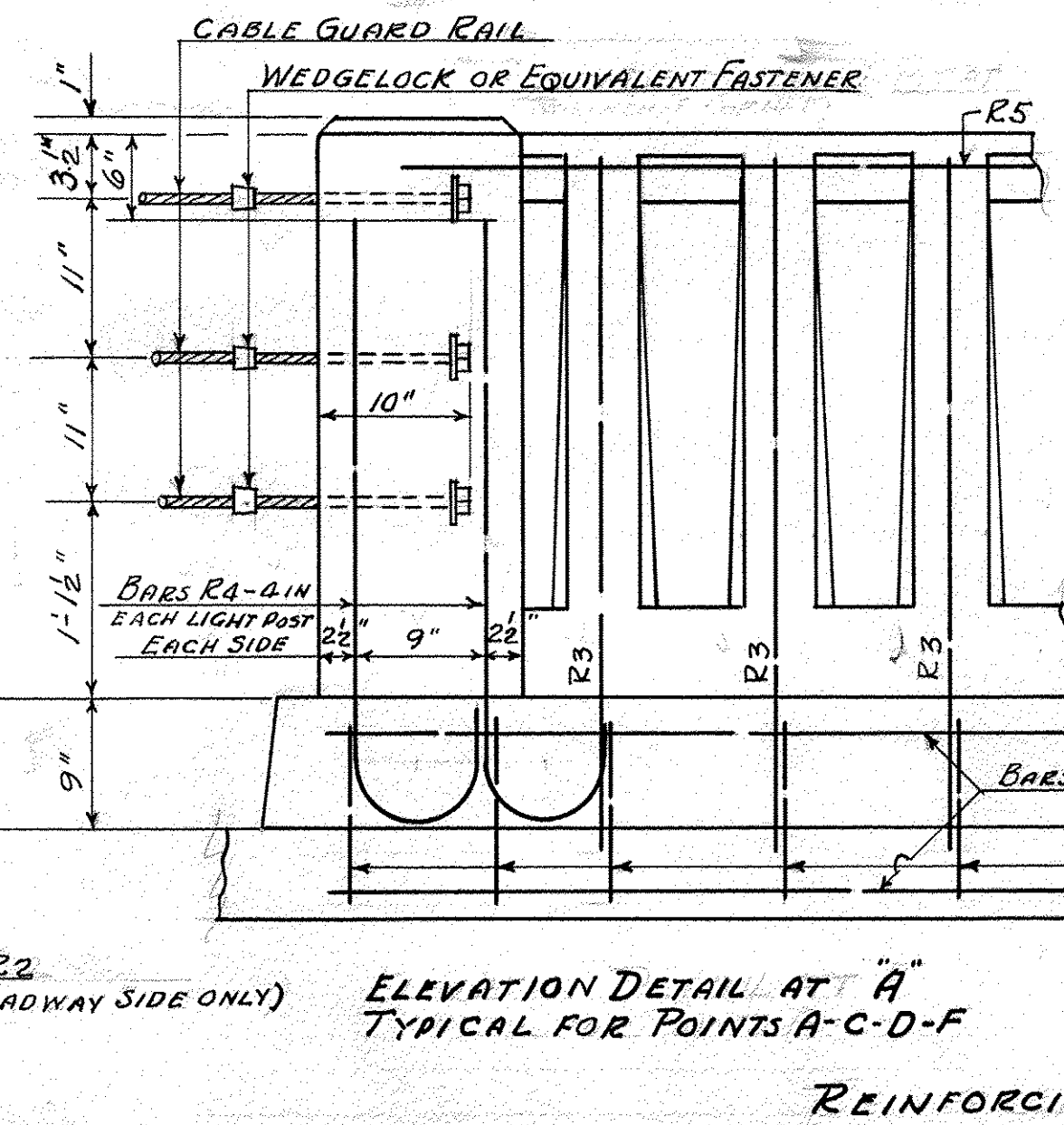
ESTIMATED QUANTITIES

BALUSTRADE RAIL	391	L.F.
CONCRETE CLASS A (FOR LOWER CURB)	9.6	C.Y.
REINF. STEEL		1920 LBS.

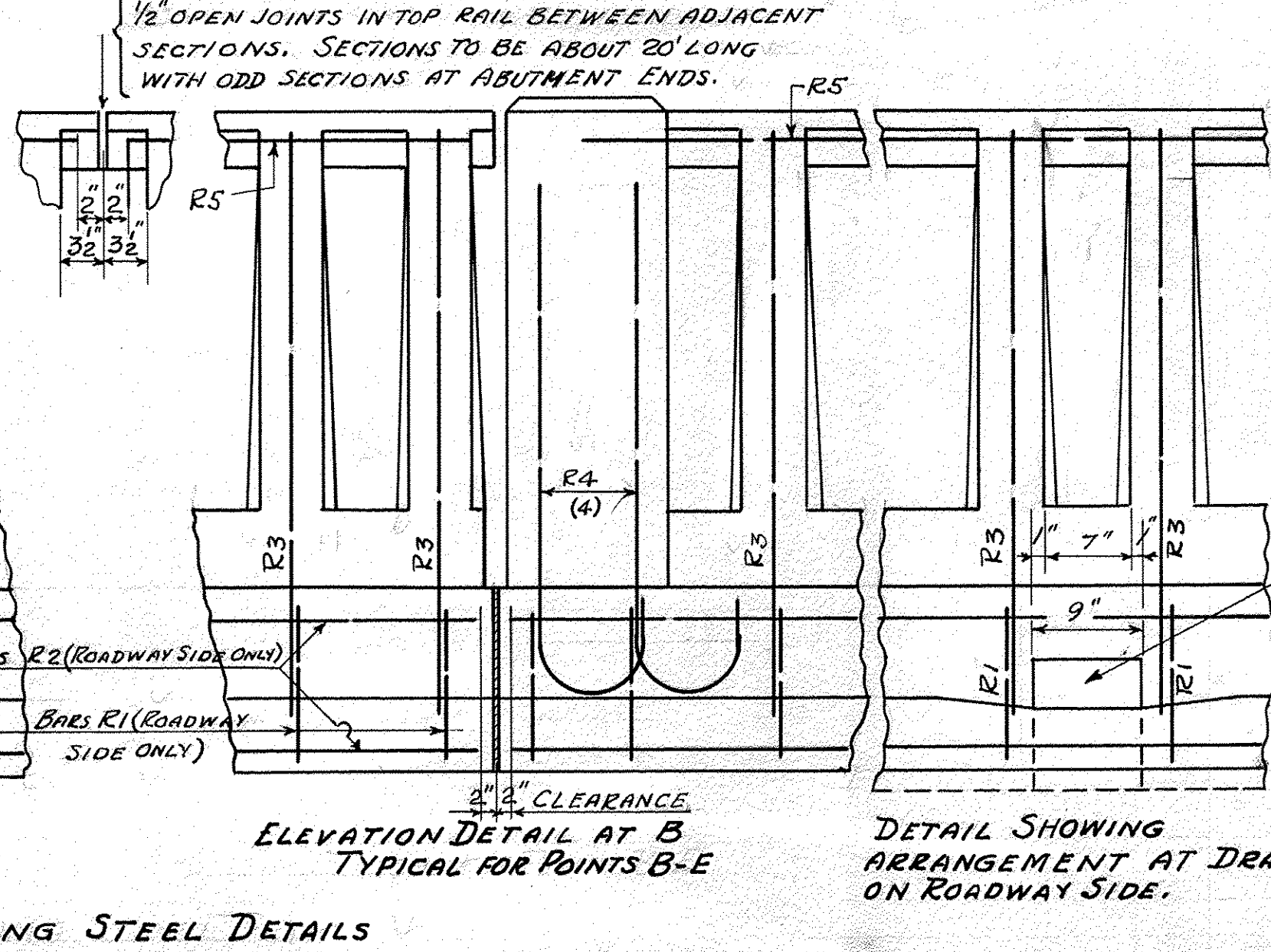
Surveyed by  
Designed by H.E.S.  
Drawn by H.E.S.  
Traced by D.W.P.  
Checked by C.H.R.  
Series ST, No. 199L Filed  
Sheet 6 of 17 Sheets



TYPICAL SECTION THRU RAILING POST AND DRAIN



ELEVATION DETAIL AT A  
TYPICAL FOR POINTS A-C-D-F



ELEVATION DETAIL AT B  
TYPICAL FOR POINTS B-E



DETAIL SHOWING ARRANGEMENT AT DRAINS ON ROADWAY SIDE.

REINFORCING STEEL DETAILS