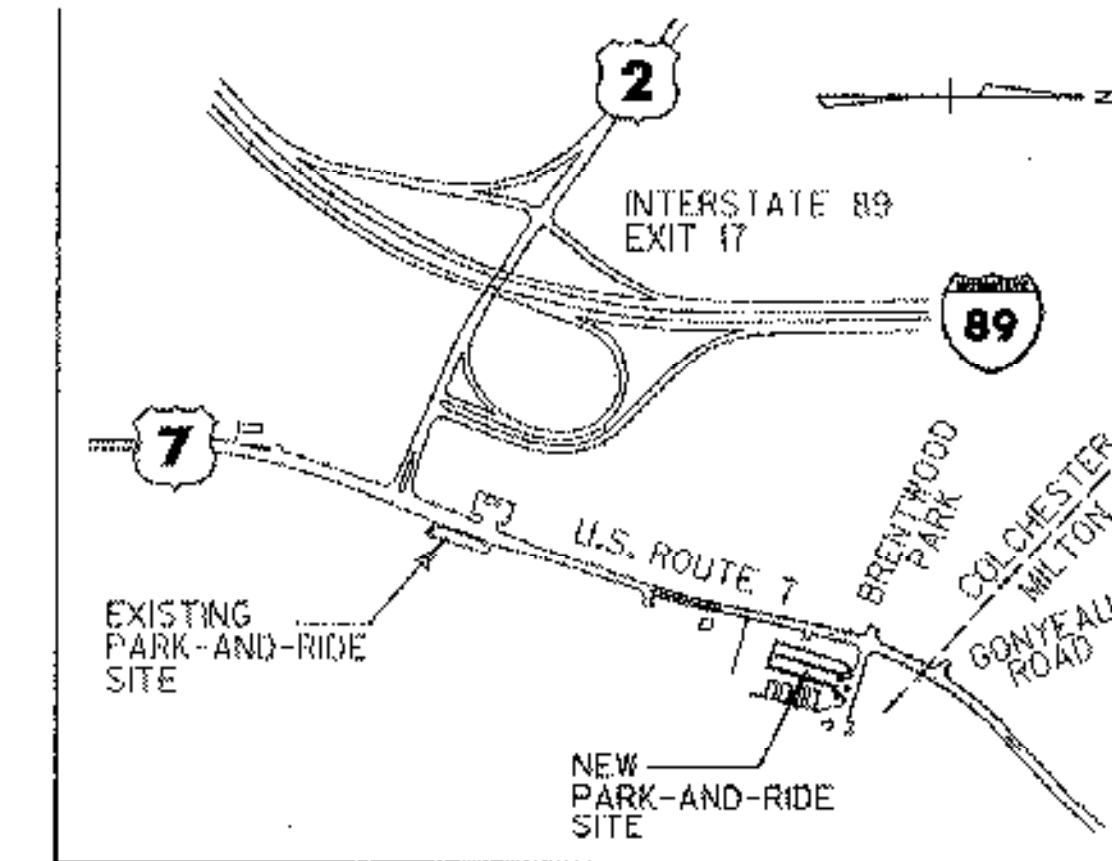


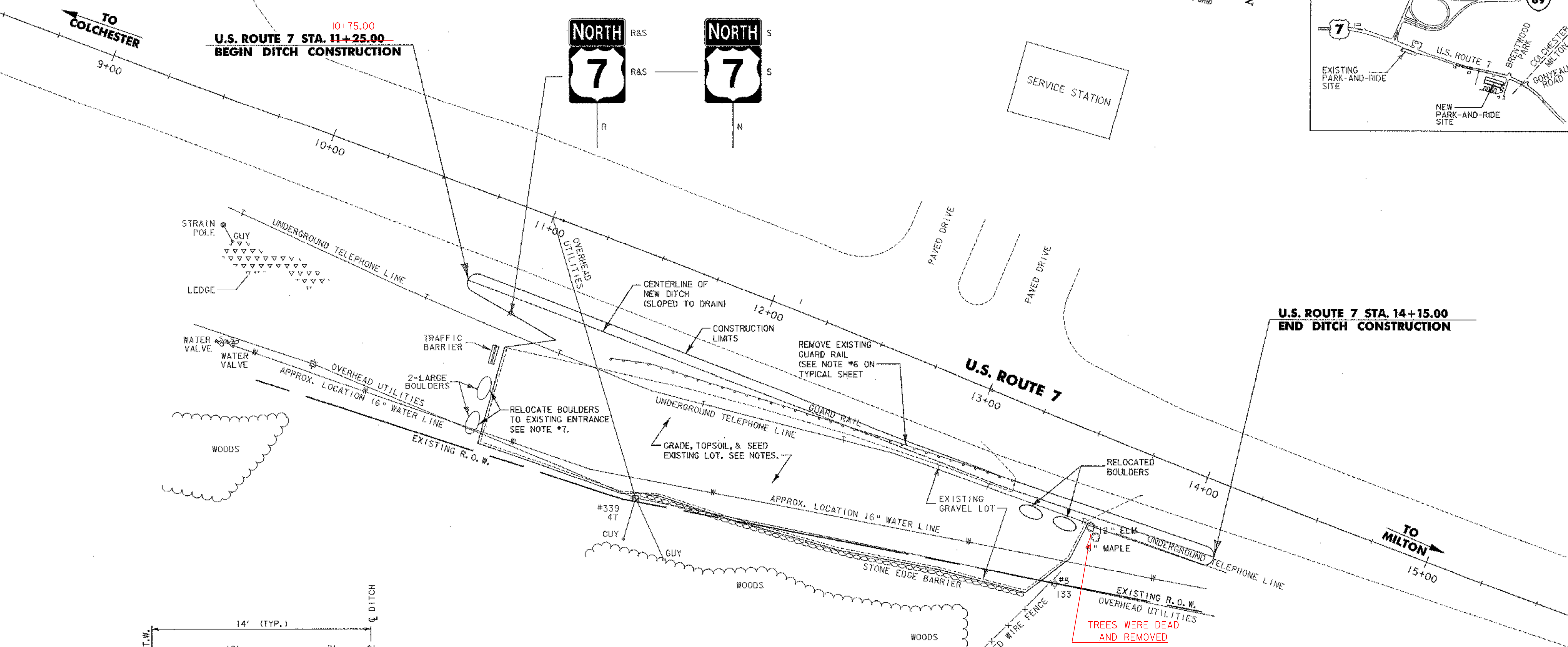
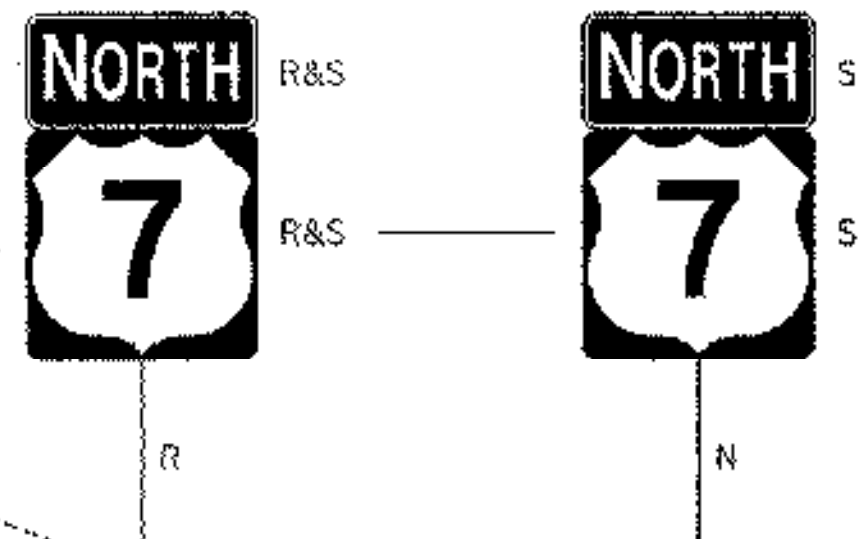
REMOVAL AND DISPOSAL OF GUARD RAIL
180 LF IN FRONT OF EXISTING PARK-AND-RIDE.
SEE GENERAL NOTE #6 ON TYPICAL SHEET.
REMOVAL AND DISPOSAL OF GUARD RAIL (MOD.)
TO REMOVE EXISTING TRAFFIC BARRIER.
SEE GENERAL NOTE #6 ON TYPICAL SHEET.

REMOVING SIGNS
AS SHOWN - 2

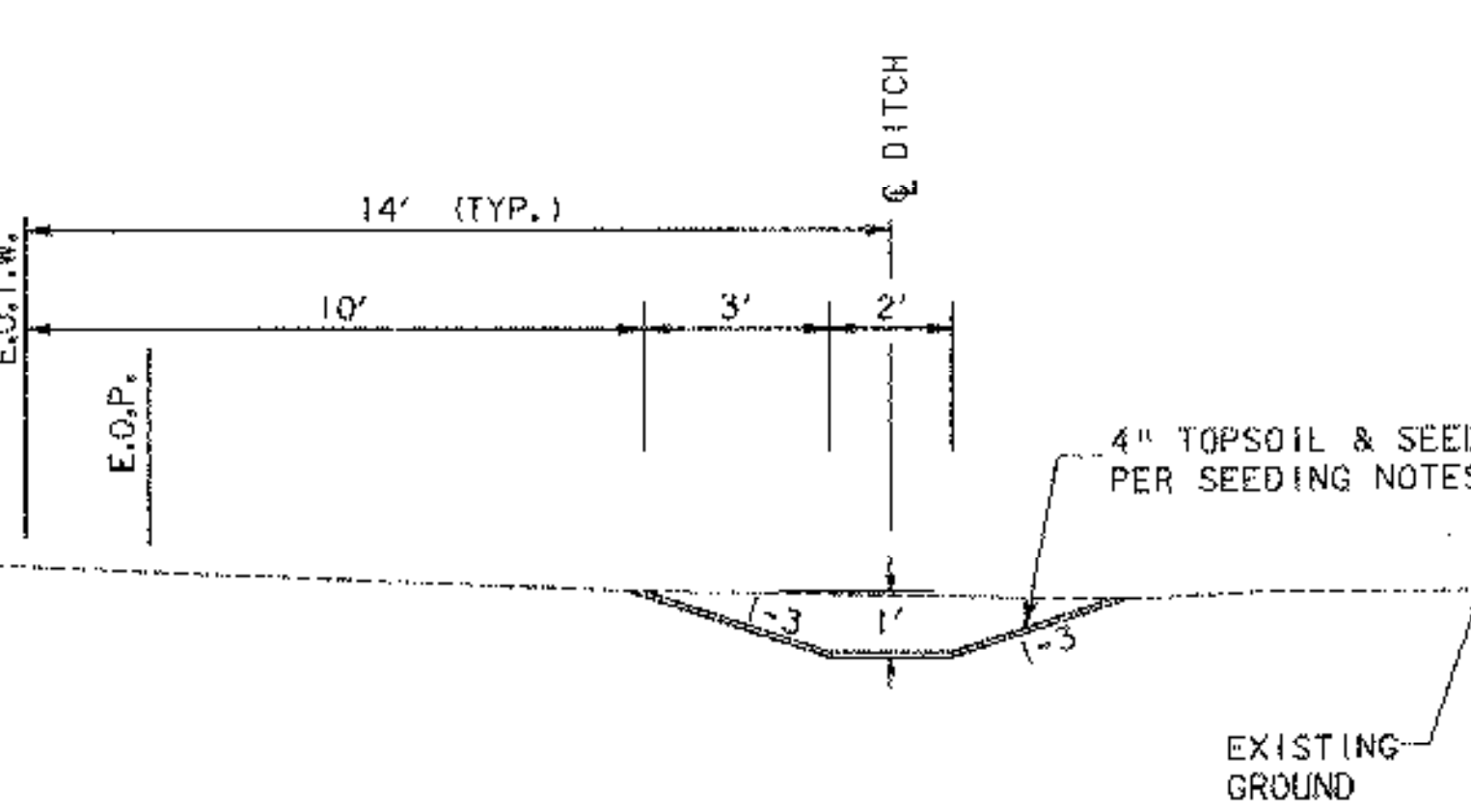
ERECTING SALVAGED SIGNS
AS SHOWN - 2



10+75.00
U.S. ROUTE 7 STA. 11+25.00
BEGIN DITCH CONSTRUCTION



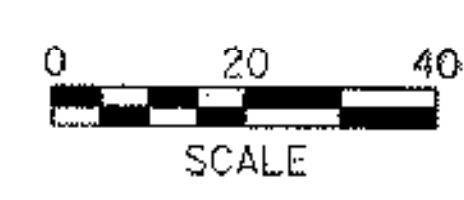
U.S. ROUTE 7 STA. 14+15.00
END DITCH CONSTRUCTION



DITCH DETAIL
NOT TO SCALE

- NOTES**
- EXCAVATE EXISTING CRUSHED ASPHALT SURFACE (8" +/-).
 - HARROW SUBSURFACE TO BREAK UP COMPACTED BASE.
 - GRADE THE EXISTING GRAVEL PARKING LOT TO DRAIN (SUBSIDIARY TO ITEM 203.15).
 - PLACE 4" OF TOPSOIL, SEED, FERTILIZER, LIMESTONE, AND MULCH PER SEEDING FORMULA ON THE LANDSCAPE DETAIL SHEET.
 - REMOVE ALL SIGNAGE RELATED TO EXISTING PARK-AND-RIDE.
 - CONSTRUCT DITCH AS SHOWN TO PROVIDE DRAINAGE AND BARRIER FOR SITE.
 - RELOCATE EXISTING BOULDERS TO ENTRANCE AS SHOWN (SUBSIDIARY TO ITEM 608.40).

TREES WERE DEAD
AND REMOVED



PROJECT NAME:	COLCHESTER PARK-AND-RIDE
PROJECT NUMBER:	CMG PARK(18)S
FILE NAME:	extst1teplan.dgn
PROJECT LEADER:	WLD
DESIGNED BY:	CSP
EXIST. PARK-AND-RIDE CLOSURE	
PLOT DATE:	07/08/02
DRAWN BY:	MAM
CHECKED BY:	CSP
SHEET	36 OF 56