

SOIL BORING LOG SUMMARY
 BASED ON A PLAN ENTITLED "BRENTWOOD PARK" BY
 "LAMOUREUX, STONE & O'LEARY"
 DATED 3/19/97, REVISED 9/18/97

B-1 (13.5' OFF E.O.P.):
 U.S. ROUTE 7
 STA. 26+67, 8' RT.
 0-8.5" PAVEMENT
 8.5" + CONCRETE

B-2 (MID. SHOULDER):
 U.S. ROUTE 7
 STA. 26+77, 16' RT.
 0-3" PAVEMENT
 3"-18" GRAVEL
 18" + SANDY SILT

B-3 (AT E.O.P.):
 U.S. ROUTE 7
 STA. 26+88, 20' RT.
 0-24" GRAVEL

B-4 (AT WHITE LINE):
 U.S. ROUTE 7
 STA. 28+22, 11' RT.
 0-13" PAVEMENT
 13"-18" + GRAVEL

B-5 (MID. SHOULDER):
 U.S. ROUTE 7
 STA. 28+22, 18' RT.
 0-5" PAVEMENT
 5"-18" GRAVEL
 18" + SANDY SILT

B-6 (2' INTO TRAVEL LANE):
 U.S. ROUTE 7
 STA. 27+69, 11' RT.
 0-13" PAVEMENT
 13"-24" GRAVEL

B-10 (2' INTO TRAVEL LANE):
 U.S. ROUTE 7
 STA. 27+13, 7' LT.
 0-12" PAVEMENT
 12" + CONCRETE

B-11 (MID. SHOULDER):
 U.S. ROUTE 7
 STA. 27+10, 14' LT.
 0-5.5" PAVEMENT
 5.5"-18" + GRAVEL

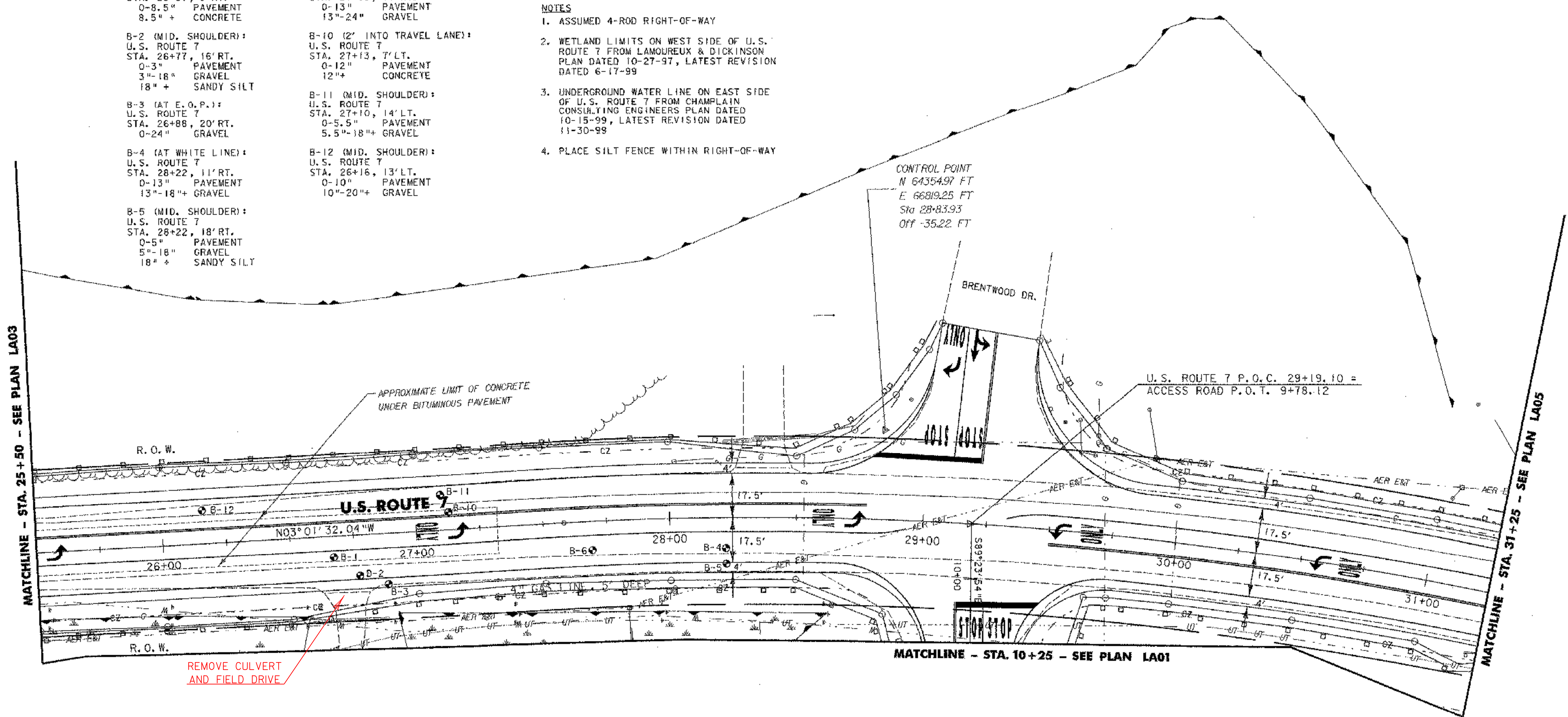
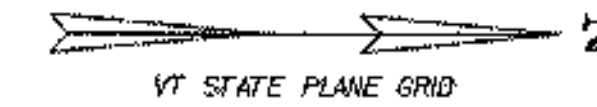
B-12 (MID. SHOULDER):
 U.S. ROUTE 7
 STA. 26+16, 13' LT.
 0-10" PAVEMENT
 10"-20" + GRAVEL

GEOTEXTILE FOR SILT FENCE

U.S. ROUTE 7 STA. 25+50 TO 26+63, RT.
 U.S. ROUTE 7 STA. 25+50 TO 28+28, LT.
 U.S. ROUTE 7 STA. 28+83, RT. TO ACCESS ROAD STA. 10+25, RT.
 U.S. ROUTE 7 STA. 28+47 TO 28+97, LT.
 ACCESS ROAD STA. 10+25, LT. TO U.S. ROUTE 7 STA. 31+25, RT.
 U.S. ROUTE 7 STA. 29+52 TO 31+25, LT.

NOTES

1. ASSUMED 4-ROD RIGHT-OF-WAY
2. WETLAND LIMITS ON WEST SIDE OF U.S. ROUTE 7 FROM LAMOUREUX & DICKINSON PLAN DATED 10-27-97, LATEST REVISION DATED 6-17-99
3. UNDERGROUND WATER LINE ON EAST SIDE OF U.S. ROUTE 7 FROM CHAMPLAIN CONSULTING ENGINEERS PLAN DATED 10-15-99, LATEST REVISION DATED 11-30-99
4. PLACE SILT FENCE WITHIN RIGHT-OF-WAY



MATCHLINE - STA. 25+50 - SEE PLAN LA03

MATCHLINE - STA. 31+25 - SEE PLAN LA05

MATCHLINE - STA. 10+25 - SEE PLAN LA01

REMOVE CULVERT AND FIELD DRIVE



PROJECT NAME: COLCHESTER PARK-AND-RIDE	PLOT DATE: 07/08/02
PROJECT NUMBER: CMG PARK(18)S	DRAWN BY: MAM
FILE NAME: LA04.PTF	CHECKED BY: GAE
PROJECT LEADER: WLD	SHEET 16 OF 56
DESIGNED BY: CSP	
RT.7 LAYOUT & EROSION LA04	