

GPS CONTROL POINTS

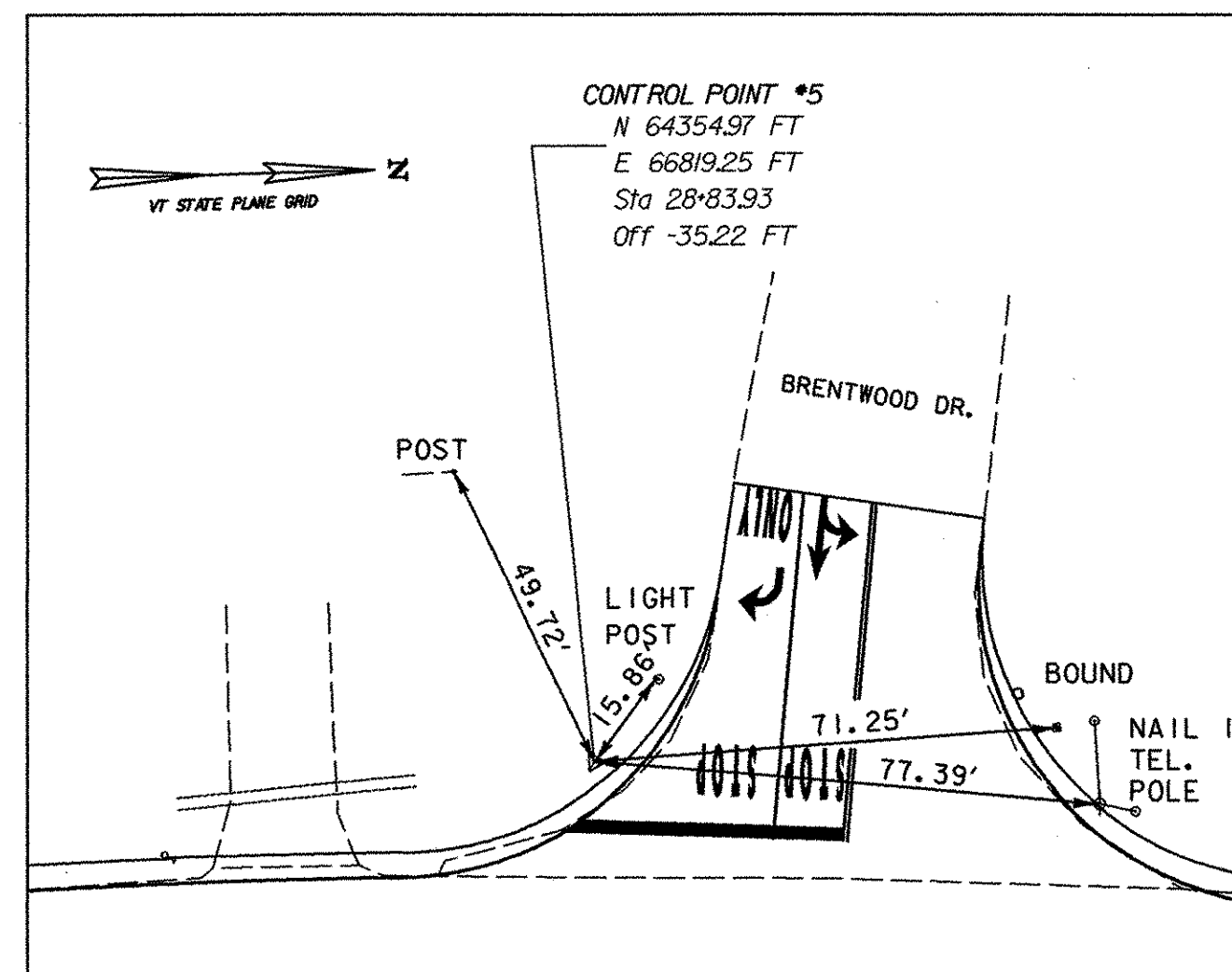
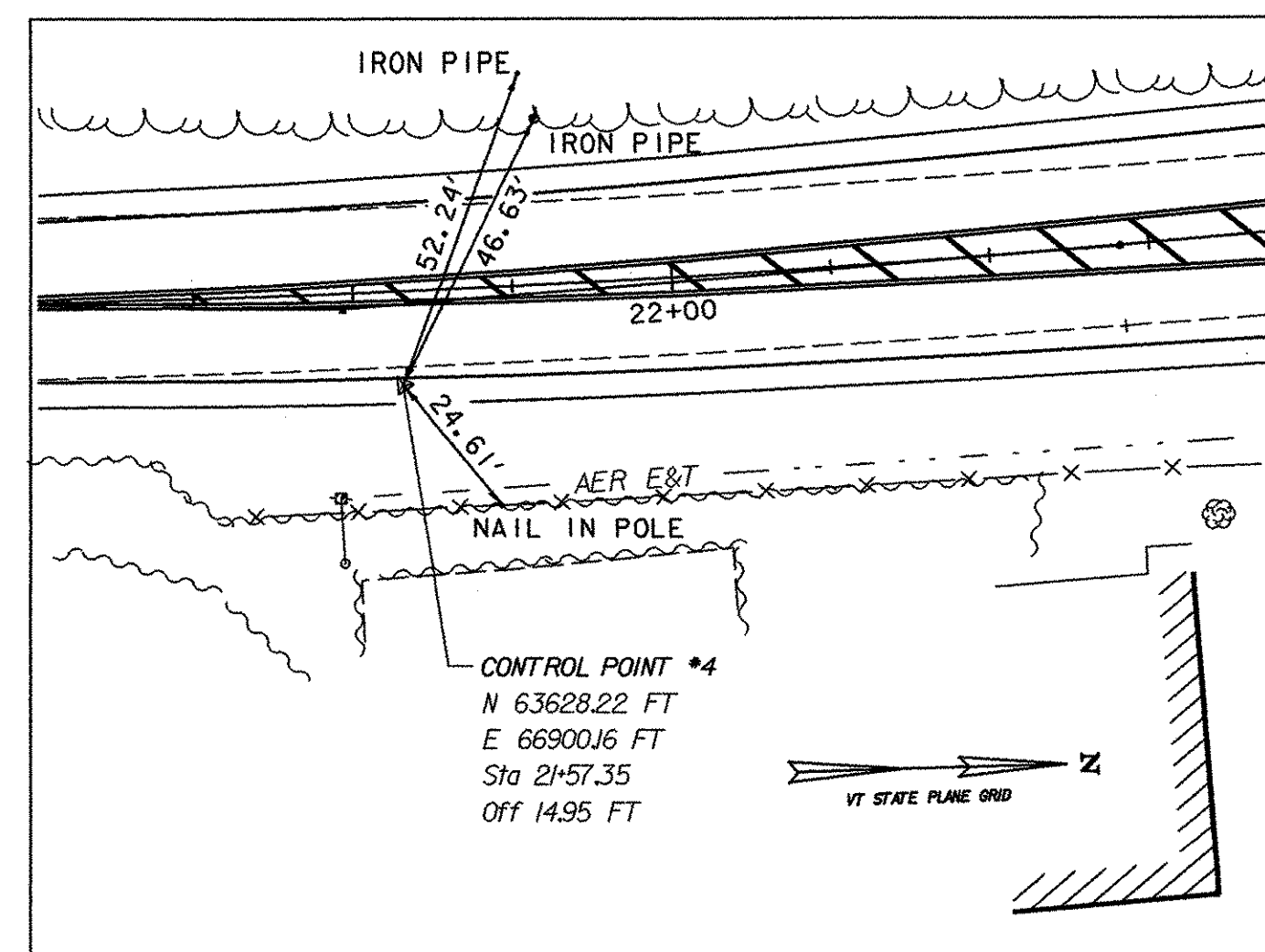
## EXIT 17 RESET 1987

DIRECTION	ACTUAL GRID POINTS		SHIFT TO FIT MICROSTATION DESIGN PLANE	PROJECT SPECIFIC COORDINATE POINTS
	METRIC	ENGLISH		
N	232390.050	762433.022'	-700,000	62433.022'
E	446829.822	1465974.173'	-1,400,000	65974.173'
Z	70.100 m	230.00'	N/A	230.00'

GENERAL LOCATION, COLCHESTER, VT.  
 THE MARK IS 19.5 M (64.0 FT) EAST OF THE EAST END OF THE U.S. ROUTE 2 BRIDGE OVER I-89 AT EXIT 17, BEHIND THE GUARD RAIL ON THE SOUTH SIDE OF U.S. ROUTE 2. IT IS SET FLUSH WITH GROUND SURFACE IN THE TOP OF A 30 CM DIAMETER CONCRETE MONUMENT POURED 1.4 M (4.6 FT) DEEP. IT IS 0.8 M (2.6 FT) SOUTH OF AND ABOUT LEVEL WITH THE SOUTH EDGE OF PAVEMENT OF U.S. ROUTE 2, 17.2 M (56.4 FT) EAST OF THE SOUTHEAST CORNER OF THE BRIDGE ABUTMENT, 0.8 M (2.6 FT) SOUTH OF A STEEL BEAM GUARD RAIL, AND 0.3 M (1.0 FT) NORTH OF A FIBERGLASS WITNESS POST.

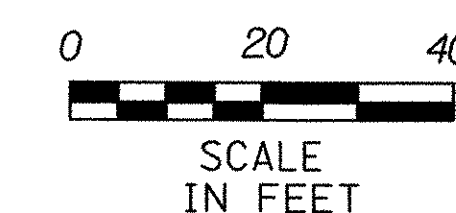
- TO ALLOW THE STATE PLANE COORDINATES TO FIT THE AGENCY DESIGN PLANE, SUBTRACT 700,000 FROM THE NORTHING AND SUBTRACT 1,400,000 FROM THE EASTING.
- DESCRIPTION PROVIDED BY VERMONT AGENCY OF TRANSPORTATION GEODETIC SURVEY UNIT

TRAVERSE TIES



ALIGNMENT TIES

DATUM	
VERTICAL	NAVD 88
HORIZONTAL	NAD 83 (1996)
ADJUSTMENT	none



PROJECT NAME:	COLCHESTER PARK-AND-RIDE	PLOT DATE:	07/08/02
PROJECT NUMBER:	CMG PARK(18)S	DRAWN BY:	GGG
FILE NAME:	zk062+ties.dgn	CHECKED BY:	GAE
PROJECT LEADER:	WLD	DESIGNED BY:	CSP
<b>SURVEY CONTROL AND TIES</b>		SHEET	12 OF 56

## EXIT 17 RESET AZ MK 1987

DIRECTION	ACTUAL GRID POINTS		SHIFT TO FIT MICROSTATION DESIGN PLANE	PROJECT SPECIFIC COORDINATE POINTS
	METRIC	ENGLISH		
N	232659.293	763316.363'	-700,000	63316.363'
E	446042.200	1463390.116'	-1,400,000	63390.116'
Z	74.51 m	244.50'	N/A	244.50'

GENERAL LOCATION, COLCHESTER, VT.  
 TO REACH FROM THE WEST END OF THE U.S. ROUTE 2 BRIDGE OVER I-89 AT EXIT 17 GO WEST ALONG U.S. ROUTE 2 FOR 0.5 MI (0.8 KM) TO THE MARK ON THE LEFT, SET IN THE TOP OF A MASSIVE ROCK OUTCROP AT THE TOP OF A LEDGE CUT. THE MARK IS 21.2 M (69.6 FT) SOUTH OF AND ABOUT 6 M (7.9 FT) HIGHER THAN THE CENTERLINE OF U.S. ROUTE 2, 2.4 M (7.9 FT) SOUTH OF THE NORTH EDGE OF THE LEDGE CUT, 9.6 M (31.5 FT) NORTHWEST OF A 10 CM ELM, AND 9.3 M (30.5 FT) NORTH OF A FIBERGLASS WITNESS POST IN THE RIGHT OF WAY FENCE.