

MATERIAL NOTES:

1. COMMON FILL - MATERIAL EXCAVATED ON SITE WHICH IS FRIABLE, NATURAL SOIL COMPOSED OF GRAVEL, SAND, OR SILTY OR CLAYEY GRAVEL AND SAND; FREE FROM DEBRIS, CONCRETE OR OTHER RUBBLE, ORGANIC MATTER, MUCK, PEAT, EXCAVATED ROCK AND BOULDERS OF 6 INCHES IN MAXIMUM DIMENSION OR GREATER.

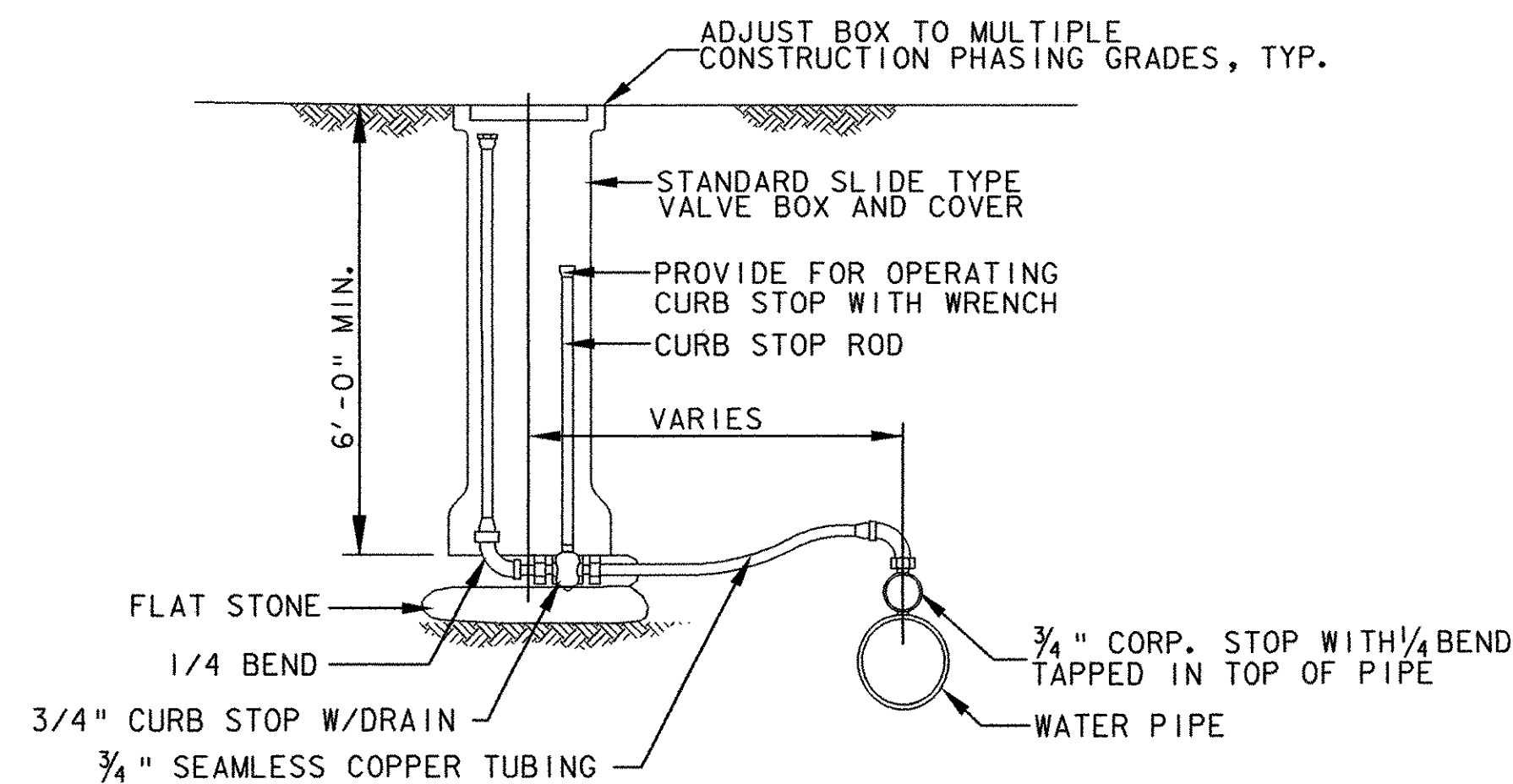
2. CRUSHED GRAVEL: CLEAN HARD CRUSHED GRAVEL; FREE FROM SILT, TOPSOIL, CLAY, AND ORGANIC MATTER, UNIFORMLY GRADED FROM COARSE TO FINE WITHIN THE LIMITS SPECIFIED IN ASTM C136. PAID FOR UNDER ITEM 301.26 SUBBASE OF CRUSHED GRAVEL (FINE GRADED).

ROAD SURFACE RESTORATION NOTES:

1. WIDTH OF TRENCH AT STREET LEVEL SHALL BE KEPT AS NARROW AS POSSIBLE.
2. PAVEMENT UNDER THE ITEMS OF WORK SPECIFIED IN THE CONTRACT DOCUMENTS ARE TO THE LINES SHOWN.
3. DEPTHS OF GRAVEL SHOWN ARE MINIMUM COMPACTED THICKNESSES.

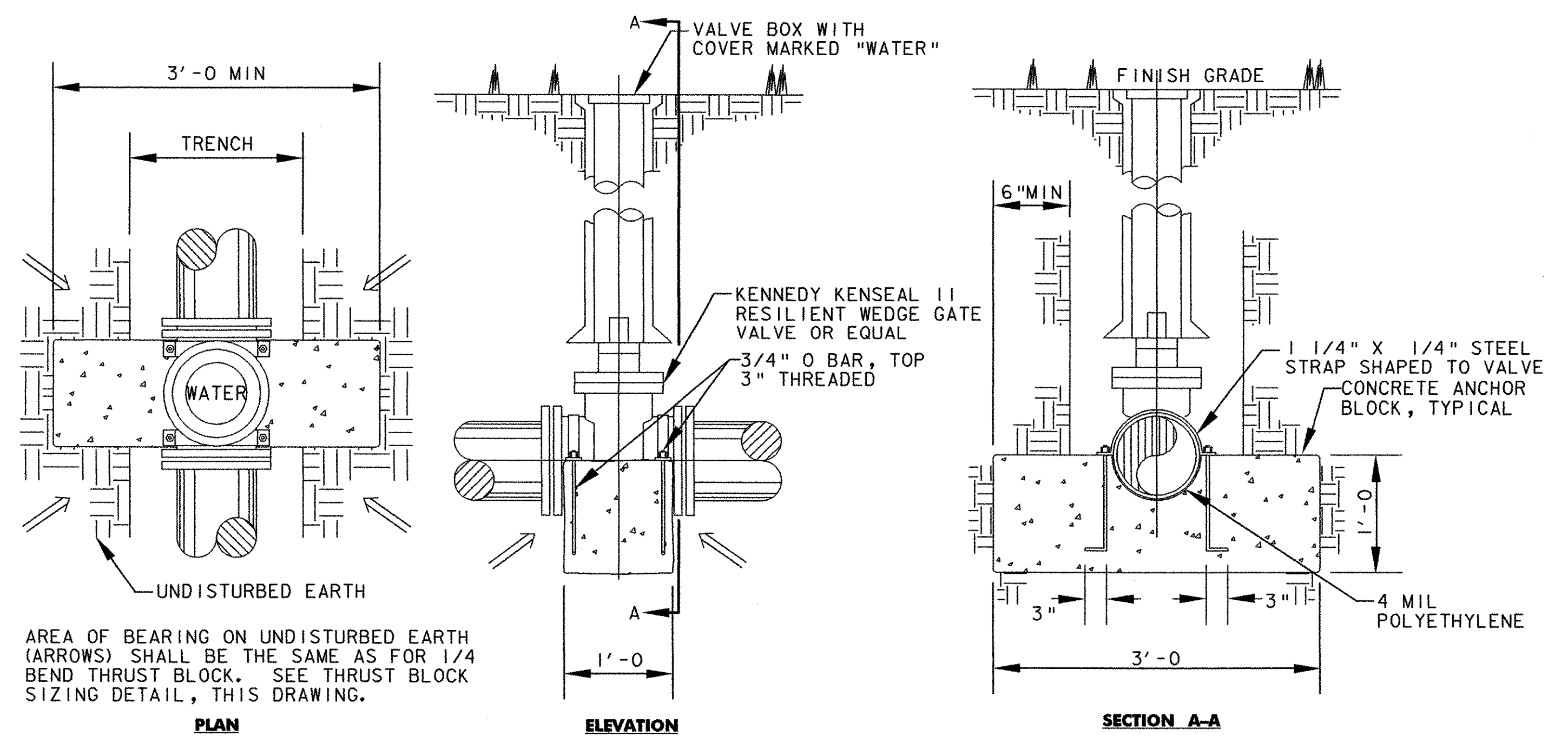
TYPICAL PVC TRENCH DETAIL

NOT TO SCALE



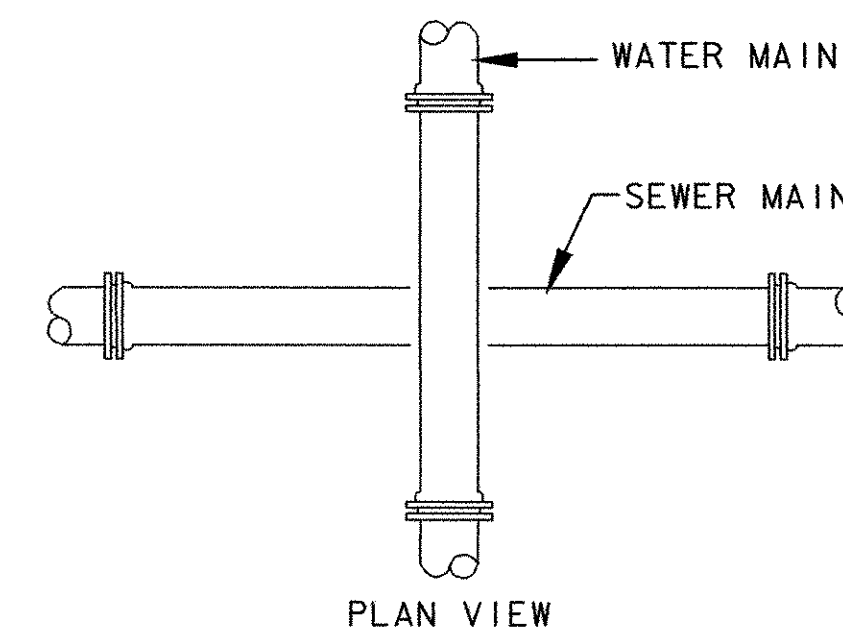
TYPICAL INSTALLATION-FOR TEMP. CHLORINATION INJECTION

NOT TO SCALE

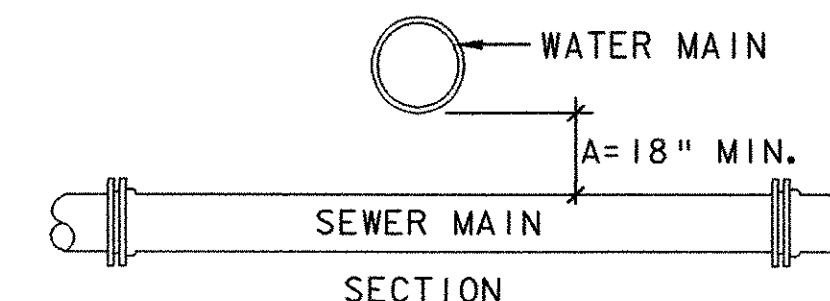


VALVE DETAILS

NOT TO SCALE



PLAN VIEW



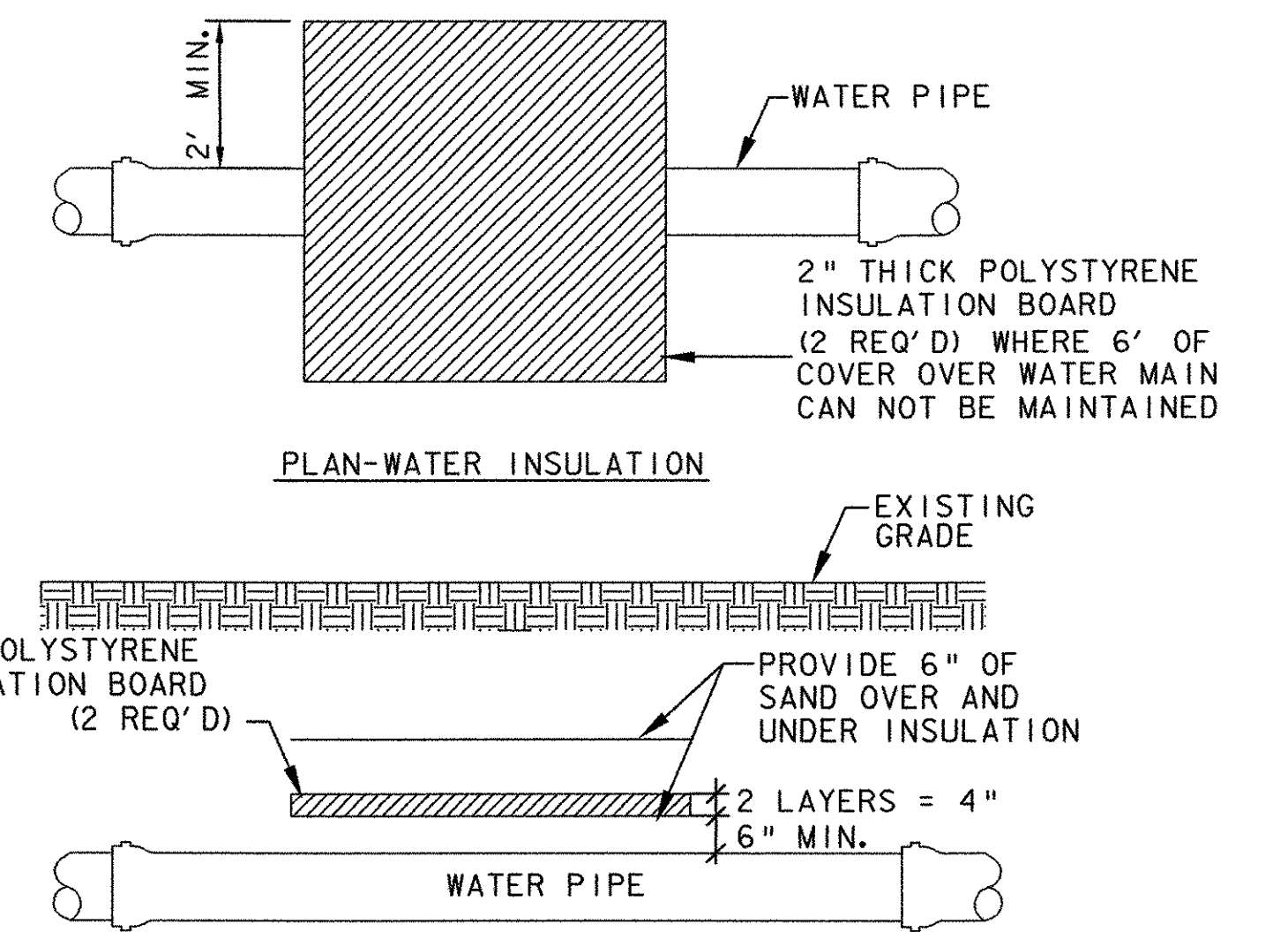
SECTION

CONSTRUCTION RESTRICTIONS

1. IN ALL NEW CONSTRUCTION, DIMENSION "A" SHALL NEVER BE LESS THAN 18 INCHES FOR WATERLINE AND SANITARY SEWER CROSSING, AND NEVER LESS THAN 12 INCHES FOR WATERLINE AND STORM DRAIN CROSSING.
2. WITH ALL NEW CONSTRUCTION, THE CROSSING SHALL BE ARRANGED AS SHOWN IN THE DIAGRAM, SO THAT THE SEWER OR STORM JOINTS WILL BE EQUIDISTANT AND AS FAR AS POSSIBLE FROM THE WATER MAIN JOINTS.
3. IF THE WATER MAIN MUST PASS BENEATH THE SEWER OR STORM DRAIN IN NEW CONSTRUCTION, THEN ADEQUATE STRUCTURAL SUPPORT SHALL BE PROVIDED FOR THE SEWER OR STORM. THE FIRST SEWER PIPE JOINT ON EACH SIDE OF THE WATER MAIN SHALL BE CONCRETE ENCASED.

WATER AND SEWER CROSSING DETAIL

NOT TO SCALE



PLAN-WATER INSULATION

SECTION-WATER INSULATION

RIGID BOARD INSULATION DETAIL

NOT TO SCALE

PROJECT NAME:	FERRISBURGH/VERGS-FERRISBURGH
PROJECT NUMBER:	CMG PARK (15)S/STP EHO1(21)
FILE NAME:	...PlotFiles\53waterdet2.pnf
PROJECT LEADER:	MLD
DESIGNED BY:	BFR
CHECKED BY:	JTM
PLOT DATE:	5/10/2006
DRAWN BY:	JSK
WATER LINE DETAILS 2	
SHEET	53 OF 65