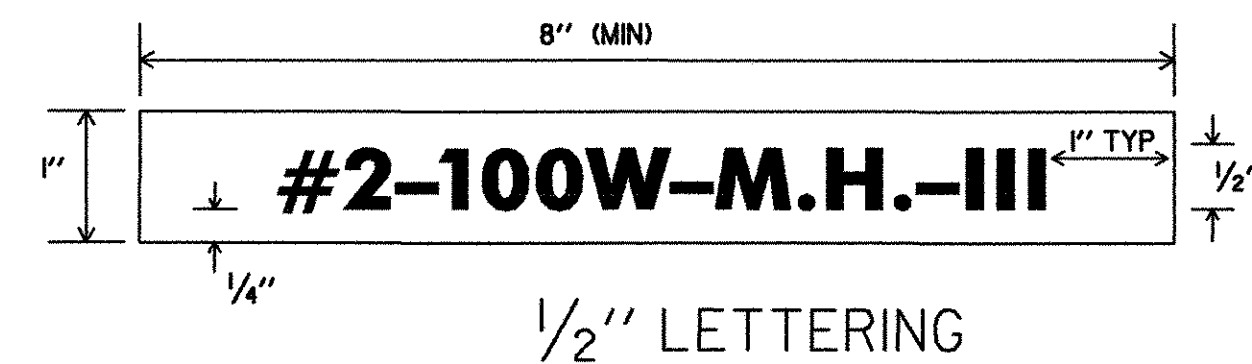


GENERAL SITE ELECTRICAL LIGHT NOTES



LEGEND: BLACK OR WHITE (NON-REFL.) - STAMPED PRIOR TO PRINTING/PAINTING.

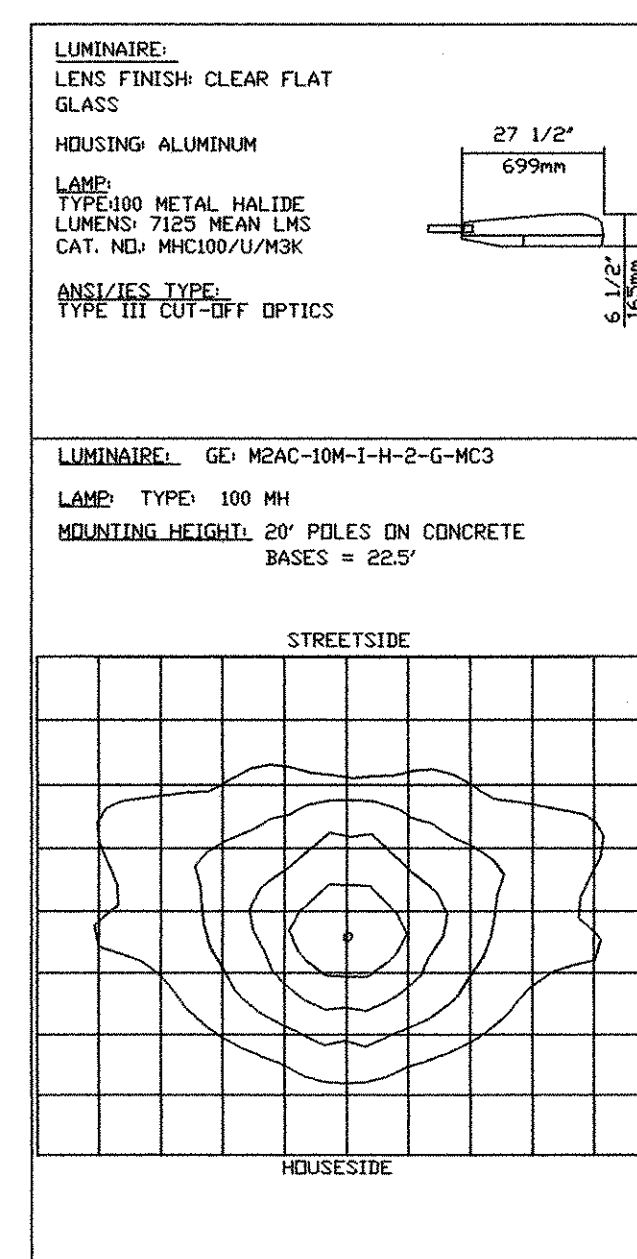
BACKGROUND: DARK BRONZE SURFACE, SAME AS POLE FINISH.

DETAILS FOR TAGS ATTACHED TO STREET LIGHT POLES

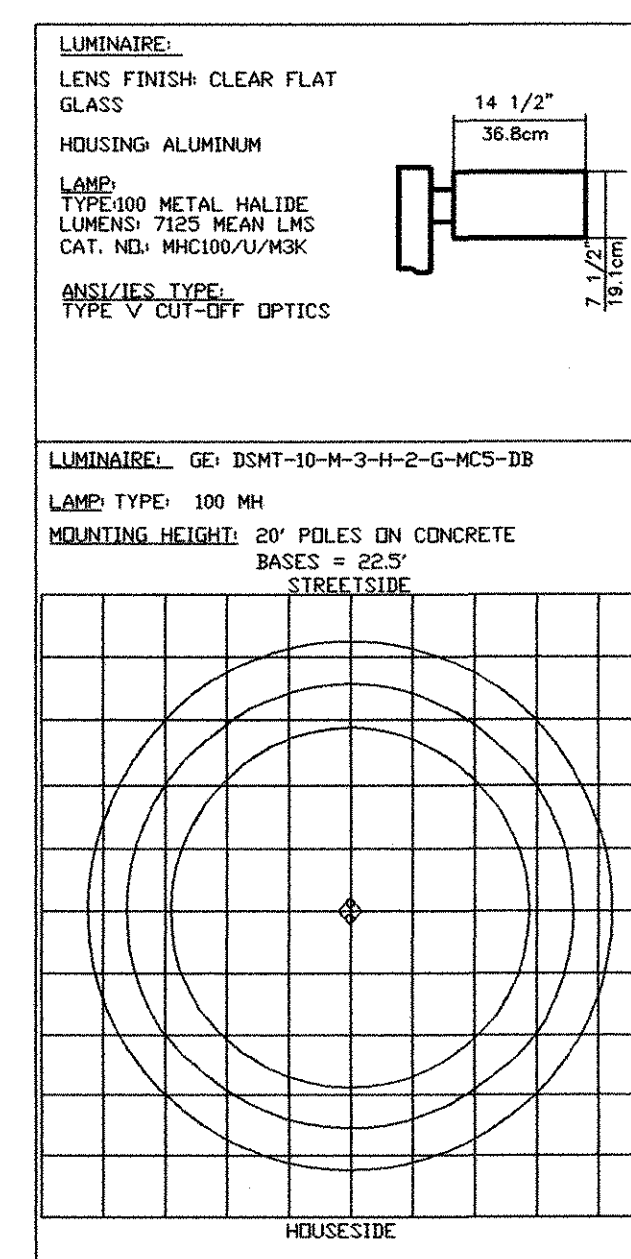
NOTES:

1. THE TAG SHALL BE MOUNTED ON ALL STREET LIGHT POLES IN SUCH A MANNER AS NOT TO BE EASILY REMOVED, SUCH AS WELDED, RIVETED, OR BOLTED WITH VANDAL PROOF BOLTS.
2. THE LETTERS SHALL BE PUNCHED, STAMPED, ENGRAVED, OR PHOTO-ETCHED. PUNCHING, STAMPING OR ENGRAVING SHALL PENETRATE AT LEAST 1/2 THE BASE MATERIAL THICKNESS.
3. THE BASE MATERIAL FOR THE TAG SHALL BE ALUMINUM WITH A MINIMUM THICKNESS OF 0.100 INCHES.
4. THE TAG SHALL BE ATTACHED TO THE POLE ABOVE THE HANDHOLE, 6 INCHES MAXIMUM. IF THE POLE HAS A TRANSFORMER BASE ATTACH TAG TO COVER.
5. TYPE 'P' FIXTURE TAG SHALL READ P-#-100W-M.H.-V. TYPE 'A' FIXTURE TAG SHALL READ A-#-100W-M.H.-III.

PHOTOMETRIC DATA



FIXTURE TYPE 'A'
ISO-FOOTCANDLE DATA
NO SCALE



FIXTURE TYPE 'P'
ISO-FOOTCANDLE DATA
NO SCALE

CONCRETE BASES

WHEN CONCRETE BASES ARE INSTALLED IN SLOPING GROUND, THE GREATEST EXPOSED HEIGHT TO KEEP ALL OF THE TOP ABOVE GROUND MUST BE DOUBLED AND THEN ADDED TO THE MINIMUM DEPTH FOR THE TOTAL BASE DEPTH.

CARE SHOULD BE TAKEN WHERE CONCRETE BASES, DRAINAGE STRUCTURES OR UTILITIES ARE CLOSE TOGETHER.

POLES, ANCHOR BASES AND ARMS

REFER TO LUMINAIRE SCHEDULE FOR ALUMINUM STREET LIGHT POLE SHAFT WALL THICKNESS.

ALL NEW STREET LIGHT POLES AND LUMINAIRE ARMS SHALL BE ALUMINUM IN ACCORDANCE WITH SUBSECTION 753.01 (B). REFER TO LUMINAIRE SCHEDULE FOR POLE MATERIAL SPECIFICATION.

STREET LIGHT POLES ALONG ACCESS ROAD SHALL HAVE A BREAKAWAY DEVICE (SLIP BASE ASSEMBLY, SEE VTrans STANDARD E-180B) BETWEEN THE POLE BASE AND CONCRETE BASE.

STREET LIGHT POLES IN PARKING LOT SHALL HAVE A NON-BREAKAWAY BASE (ANCHOR BASE ASSEMBLY, SEE VTrans STANDARD E-180B).

WIRE

ALL WIRING BETWEEN THE METER AND/OR POWER SOURCE AND THE FIRST POLE AND/OR PULLBOX AND BETWEEN POLES AND/OR PULLBOXES SHALL BE COPPER AND SIZED AS SPECIFIED ON THE PLANS. ALL WIRE SHALL HAVE TYPE XHHW INSULATION OR EQUIVALENT.

GROUNDING

ALL CONDUIT MUST INCLUDE A GROUNDING CONDUCTOR. RIGID STEEL CONDUIT SHALL BE PROPERLY CONNECTED AT THE JOINTS SO AS TO BE WATERTIGHT AND MAINTAIN ELECTRICAL CONTINUITY AND HAVE GROUNDING BUSHINGS SO AS TO ACT AS A GROUND CONDUCTOR.

ALUMINUM WIRE SHALL NOT BE USED FOR GROUND WIRE.

PULLBOXES

FOR DETAILS SEE VTrans STANDARD SHEET E-173.

GENERAL

THE LOAD ON EACH BRANCH OF A THREE WIRE CIRCUIT SHALL BE AS BALANCED AS POSSIBLE, LOAD TO NEUTRAL.

THE LAST CONCRETE POLE BASE AT THE END OF EACH CIRCUIT AND SOME PULLBOXES SHALL HAVE A CONDUIT SWEEP WITH CAP INSTALLED FOR FUTURE USE.

THE CONTRACTOR SHALL BE RESPONSIBLE FOR OBTAINING NECESSARY ELECTRICAL PERMITS.

LUMINAIRES

LIGHT DISTRIBUTION IS BASED ON GENERAL ELECTRIC PHOTOMETRIC DATA DRAWINGS #35-178271, MEDIUM CUT-OFF, TYPE III DISTRIBUTION, DATED 09-28-90 AND #35-178665, SHORT CUTOFF, TYPE V DISTRIBUTION, DATED 03-06-97.

THE PHOTOMETRIC DATA DRAWINGS WERE USED FOR DESIGN PURPOSES ON THIS PROJECT. OTHER MANUFACTURER'S PRODUCTS MAY BE SUBSTITUTED IF THE INSTALLED LUMINAIRE LIGHT UTILIZATION AND MINIMUM FOOTCANDLES ON THE ROADWAY, SHOULDER AND SIDEWALK ARE AT LEAST AS GREAT AS THAT INDICATED BY THE ABOVE PHOTOMETRIC.

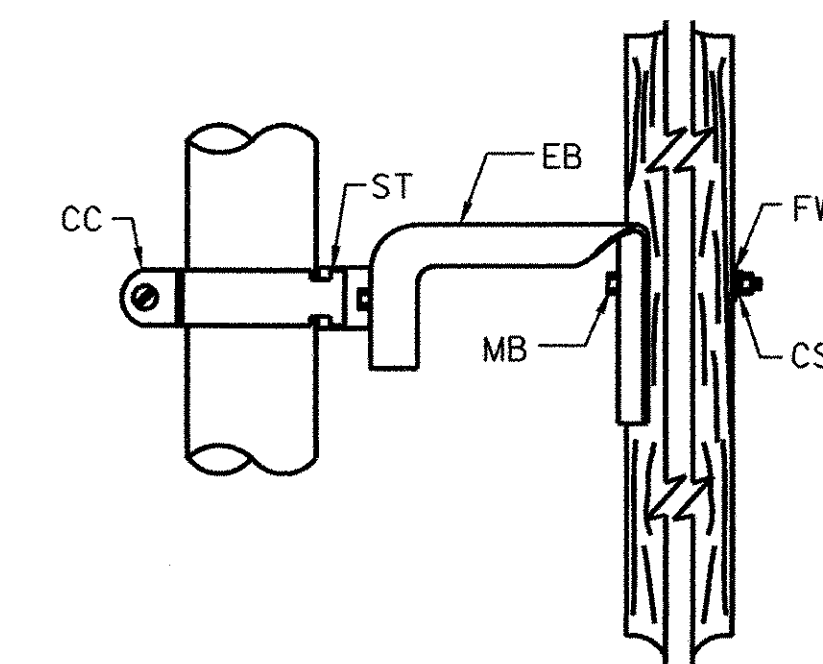
CONDUIT

A 2 INCH (I.D.) MINIMUM CONDUIT SHALL BE USED AT ALL LOCATIONS UNLESS OTHERWISE NOTED ON THE PLANS, ALL CONDUIT SHALL BE AT LEAST SCHEDULE 40 P. V. C.

CONDUIT SLEEVE

MINIMUM WALL THICKNESS FOR RIGID PLASTIC PIPE SLEEVES SHALL BE 1/35TH THE DIAMETER. ALL CONDUIT RUNS UNDER ROADWAY SHALL BE INSTALLED IN RIGID PLASTIC OR STEEL PIPE SLEEVES. THE SLEEVE SHALL EXTEND TO WITHIN 2 FEET OF THE SIDE OF A CONCRETE BASE OR PULLBOX. WHERE NO CONCRETE BASE OR PULLBOX IS PRESENT, THE SLEEVE SHALL EXTEND 4 FEET BEYOND THE OUTSIDE EDGE OF SHOULDER OR FACE OF CURB.

WHEN JACKING A SLEEVE UNDER A ROADWAY IT SHALL BE STEEL WITH A MINIMUM DIAMETER OF 8 INCHES AND MINIMUM WALL THICKNESS OF 3/8 INCH. ACTUAL LENGTH TO BE DETERMINED IN THE FIELD BY THE RESIDENT ENGINEER.



MATERIAL FOR ONE STANDOFF BRACKET		
ITEM NO.	REQUIRED	CODE/MATERIAL
FW	1	FLAT WASHER 2"x2"
CS	1	COIL SPRING WASHER
REB	1	RAIL EXTENSION BRACKET
ST	1	STRUT (CUT TO LENGTH)
CC	1	CONDUIT CLAMP
MB	1	MACHINE BOLT 3/8"

STANDOFF BRACKET

NOT TO SCALE

PROJECT NAME: FERRISBURGH/VERGS-FERRISBURGH

PROJECT NUMBER: CMG PARK (15)S/STP EHO(21)

FILE NAME: ...36lightingdetails2.ptf

PLOT DATE: 4/19/2006

PROJECT LEADER: WLD

DRAWN BY: MBL

DESIGNED BY: LAB/MLC

CHECKED BY: LAB

LIGHTING DETAILS SHEET 2

SHEET 36 OF 65