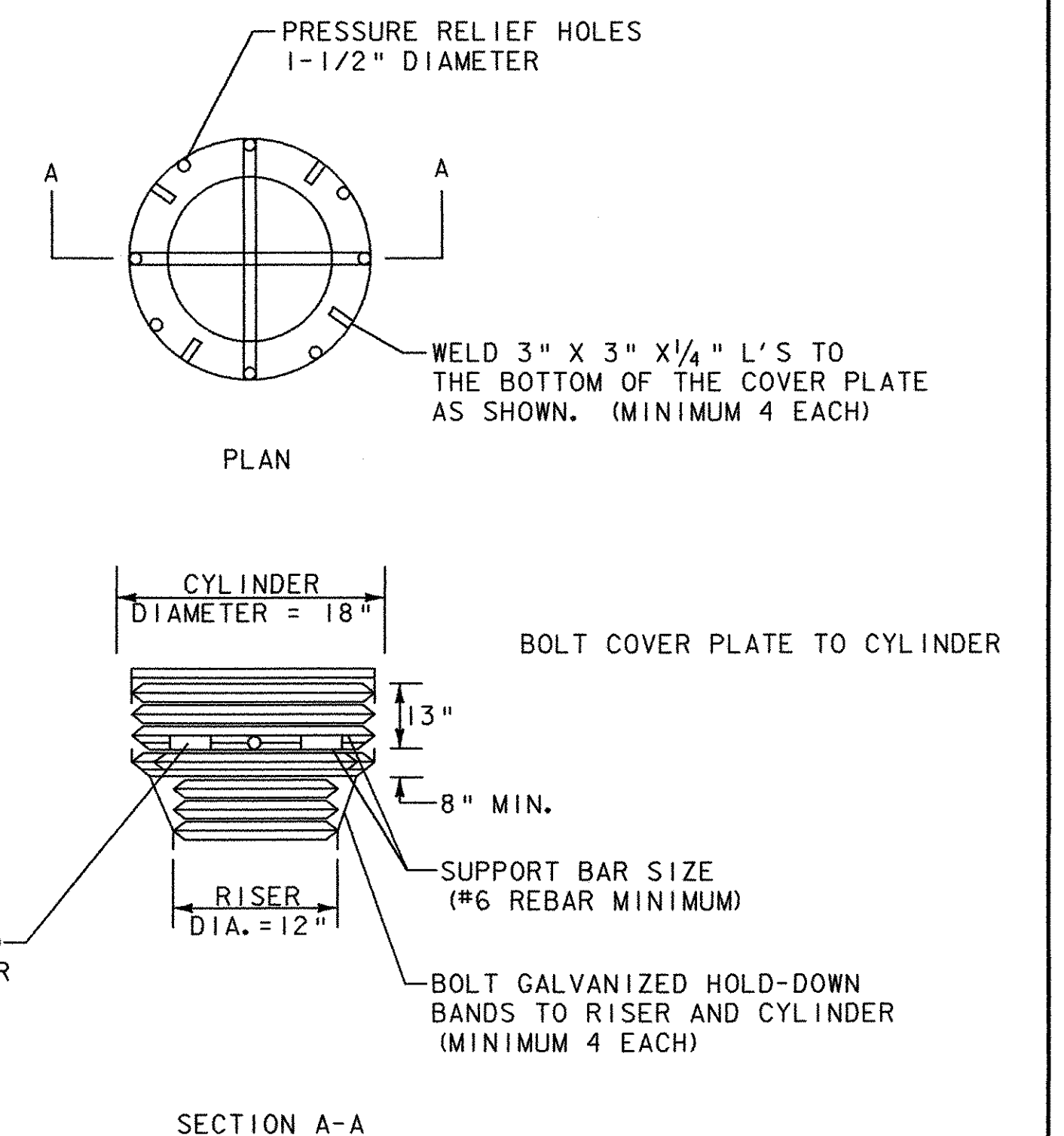


DETENTION BASIN OUTLET STRUCTURE
NOT TO SCALE

- DIAMETER OF PLATE TO EQUAL THE CYLINDER DIAMETER OF 18" TOP TO BE MANUFACTURED OF GALVANIZED 1/4" STEEL PLATE. STIFFENER BARS WILL BE REQUIRED ON TOPS WITH A DIAMETER OF 54" OR GREATER.
- CENTER 1-1/2" DIAMETER PRESSURE RELIEF HOLES 3" FROM OUTSIDE EDGE.
- NOTES:
- SUPPORT BARS ARE TO BE SHOP-WELDED TO THE TOP OF RISER.
 - THE CYLINDER MUST BE FIRMLY FASTENED TO THE TOP OF THE RISER. FIELD DRILL BOLT HOLES IN THE RISER, CYLINDER, AND 1/4" X 3" GALVANIZED HOLD-DOWN BANDS TO FACILITATE FASTENING. TOUCH UP HOLES WITH ZINC CHROMATE PAINT OR EQUIVALENT.
 - ALL ANGLES, NUTS, BOLTS, WASHERS AND MISC. HARDWARE REQUIRED TO FASTEN THE COVER PLATE AND CYLINDER TO THE RISER SHALL BE STAINLESS STEEL OR GALVANIZED.



GENERAL NOTES:

- CONCRETE BASE PAID AT CONTRACT UNIT PRICE FOR ITEM NO. 501.25 - CONCRETE, CLASS B.
- 1 1/2" HOLES, TEE & MISC. WORK TO CONSTRUCT RISER IS INCLUDED IN THE CONTRACT UNIT PRICE FOR 12" CSP.
- PROVIDE ANTI-SEEP COLLAR TO PREVENT WATER FLOW THROUGH PIPE BEDDING MATERIAL. COST TO BE PAID FOR AS CONCRETE CLASS B.
- ANTI-SEEP COLLARS SHALL BE INSTALLED AS SHOWN TO RESIST FLOW ALONG THE OUTSIDE OF THE PIPE. COLLARS SHOULD PROTECT A MINIMUM OF 2' FROM THE PIPE. MAXIMUM SPACING OF COLLARS IS 20'.
- WORK TO FURNISH AND CONSTRUCT CONCENTRIC TRASH HOOD & ANTI VORTEX DEVICE SHALL BE INCIDENTAL TO ITEM NO. 601.0005: 12" CSP.



PROJECT NAME:	FERRISBURGH/VERGS-FERRISBURGH
PROJECT NUMBER:	CMG PARK (15)S/STP EHO(21)
FILE NAME:	...\\19drainagedetails.prf
PROJECT LEADER:	WLD
DESIGNED BY:	SAR
DRAWN BY:	MBL
CHECKED BY:	GAS
DRAINAGE DETAIL SHEET	
PLOT DATE:	5/24/2006
CHECKED BY:	GAS
SHEET	19 OF 65