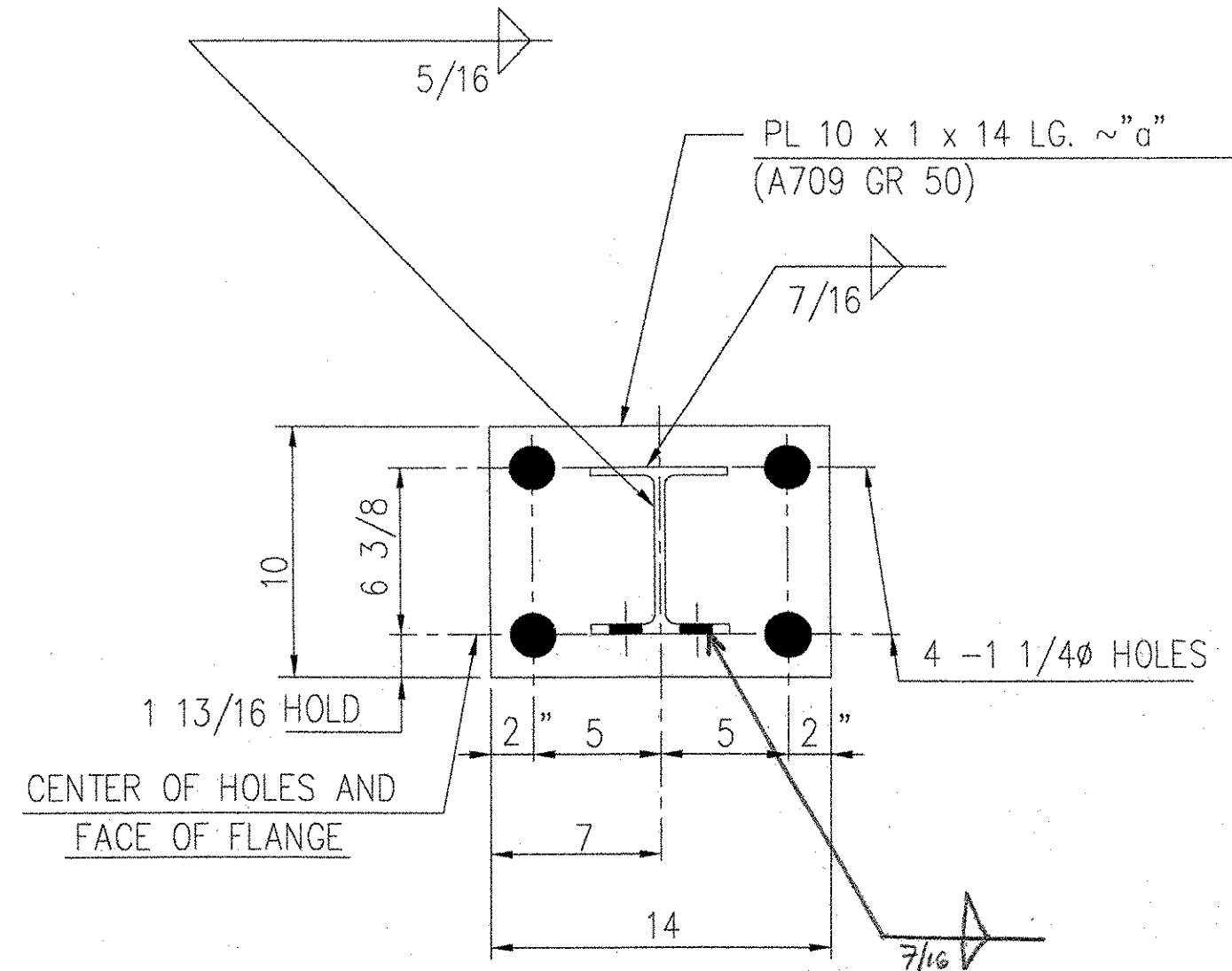
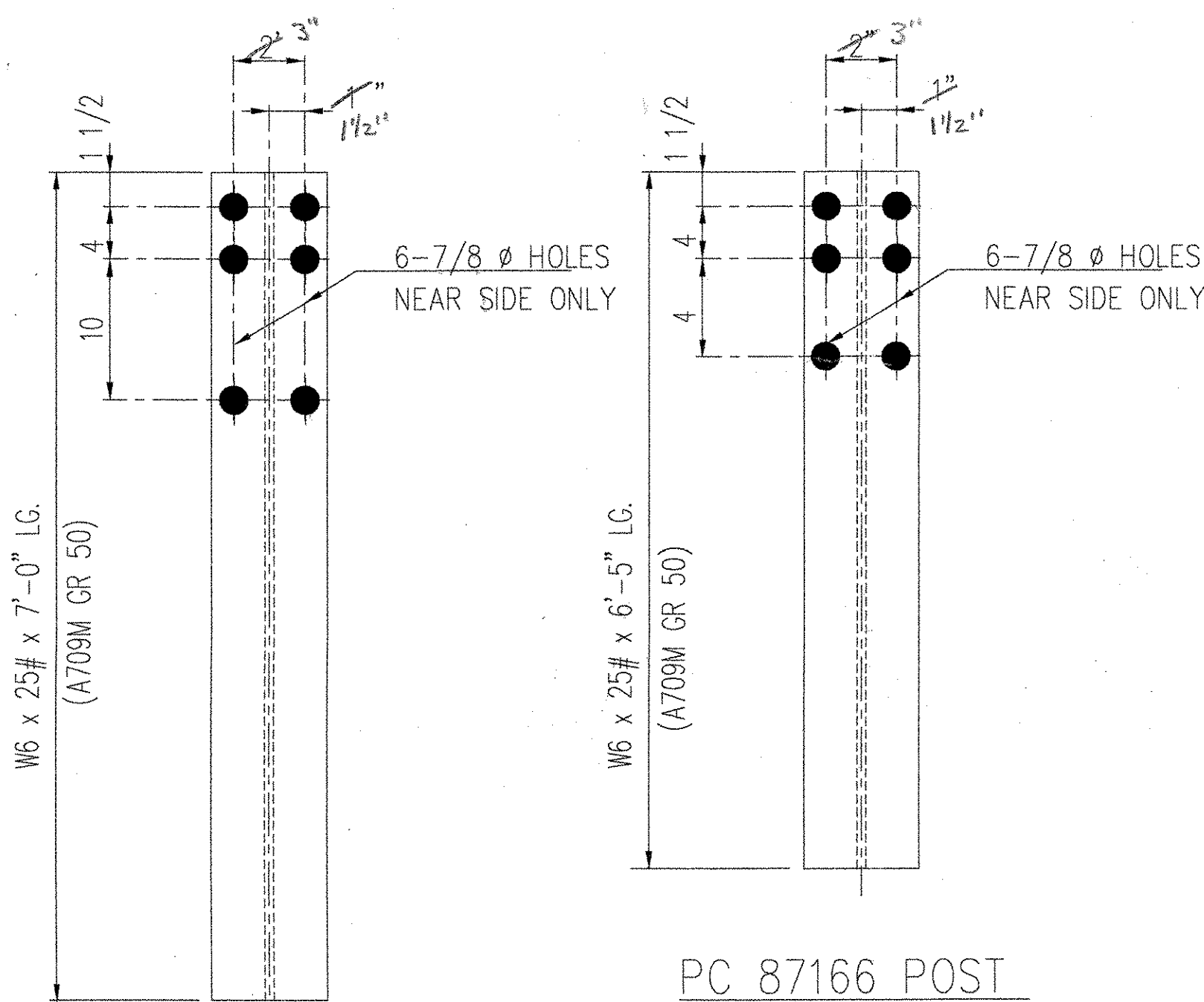


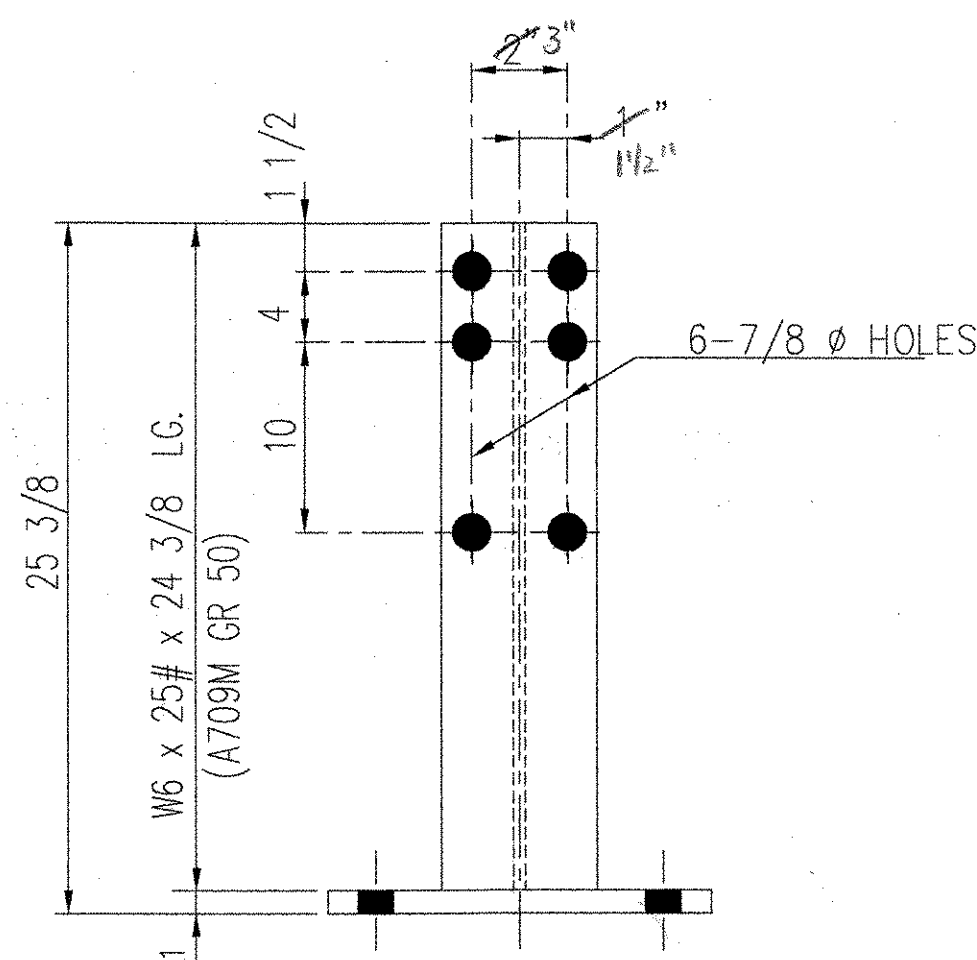
F:\R\Share\Engineering\STATE\VT\VT1032196\22-1032196-D001.dwg 11:44:28 3/24/04



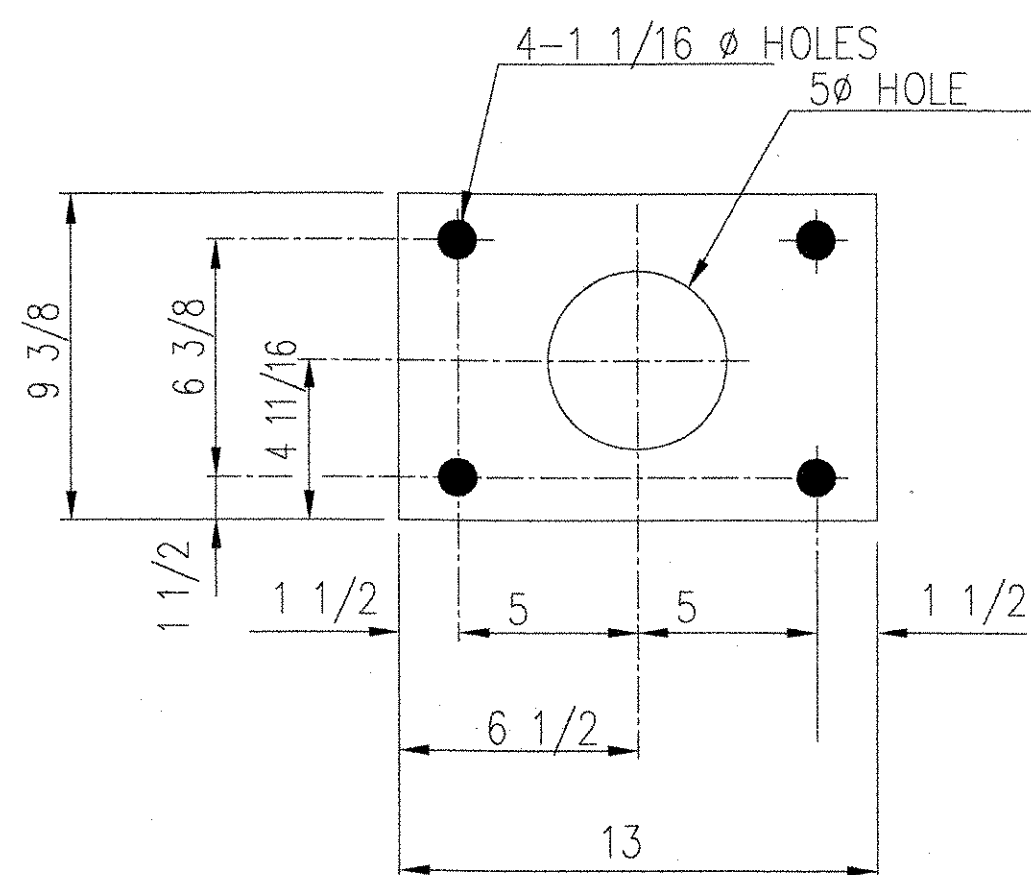
PC 87165 POST



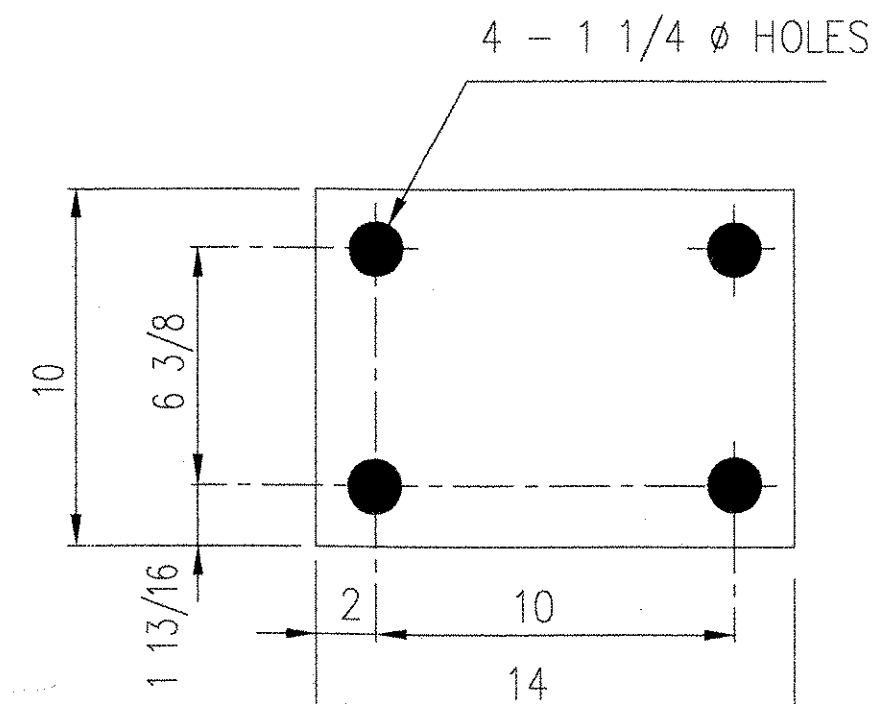
PC 87166 POST



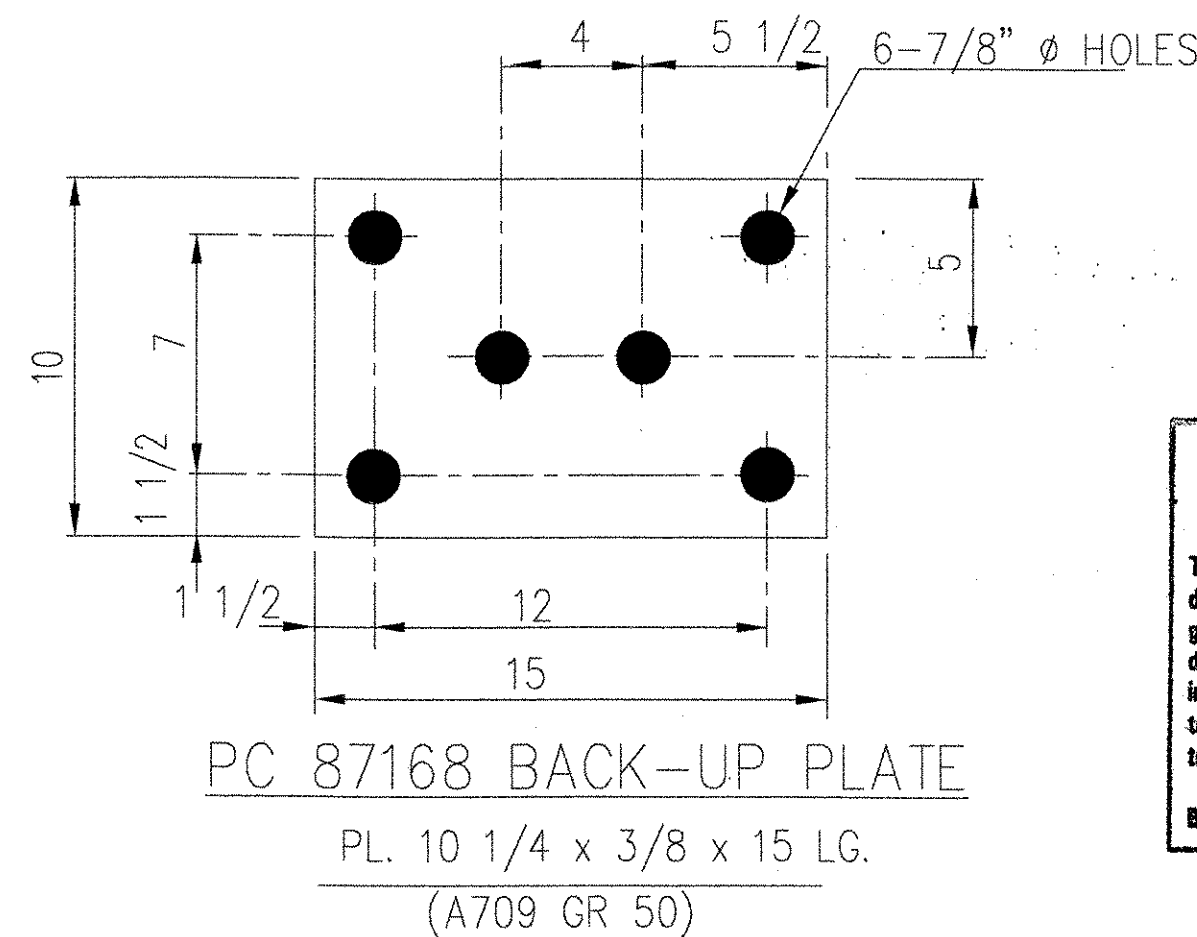
PC 87164 POST



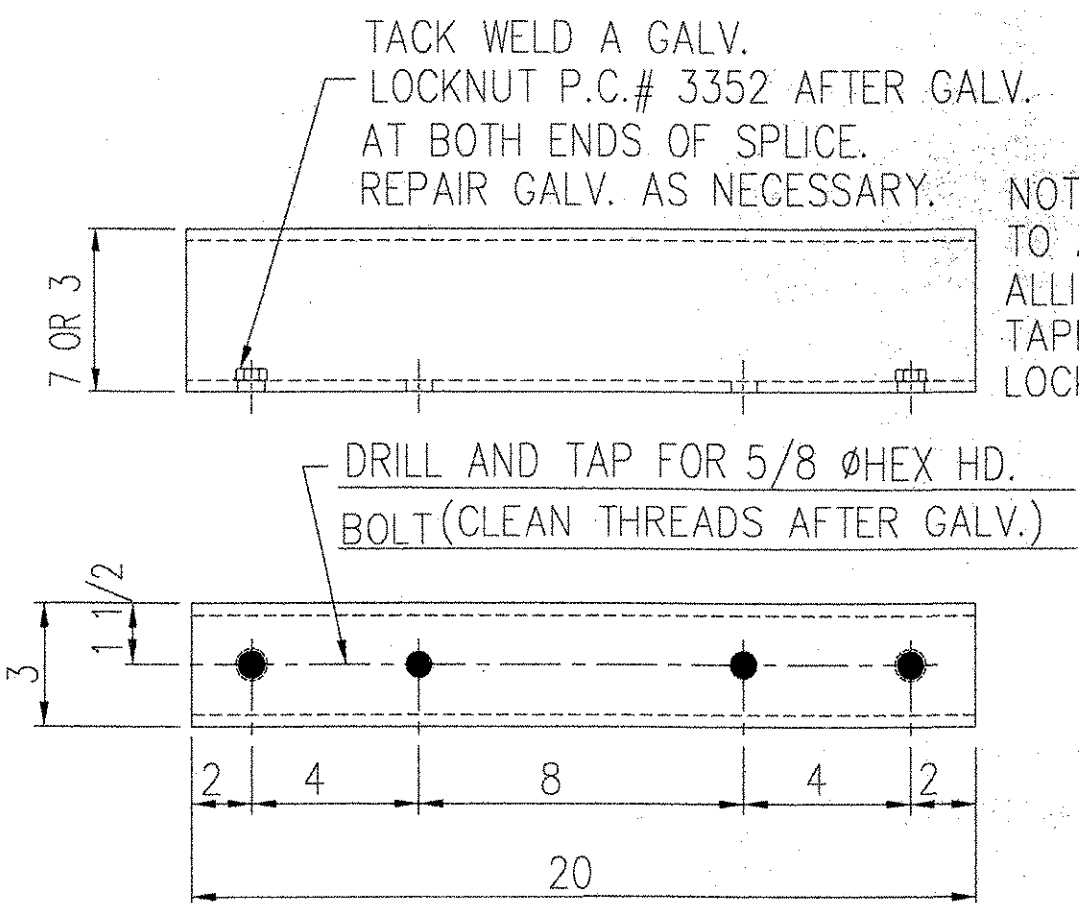
PC 87167 ANCHOR PLATE
PL 9 3/8 x 3/8 x 13 LG.
(A 709 GR.50)



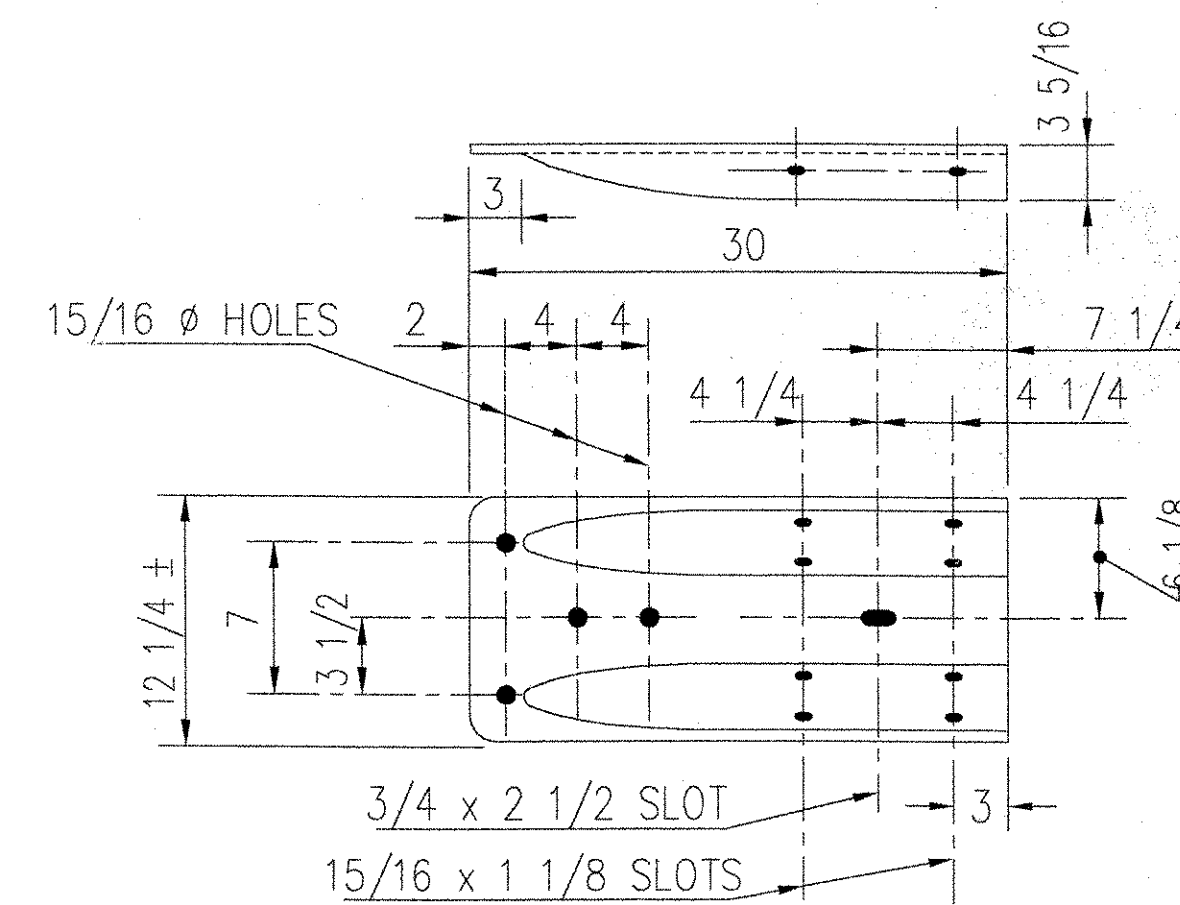
PC 3619 BEARING PAD
1/8 THICK ELASTOMERIC PAD



PC 87168 BACK-UP PLATE
PL. 10 1/4 x 3/8 x 15 LG.
(A709 GR 50)



PC 925 END SHOE
(AASHTO M180)



PC- 35107 SPLICE TS 7 x 3 x 3/8 x 20 (A500 GR B)
PC- 35103 SPLICE TS 3 x 3 x 5/16 x 20 (A500 GR B)

LICHTENSTEIN CONSULTING ENGINEERS, INC.
This drawing has only been checked for conformance with the design concept of the Project and compliance with the information given in the Contract Documents. Contractor is responsible for dimensions to be confirmed and completed at the job site for information that pertains only to the fabrication processes or to technique of construction; and for coordination of the work of all trades.
By: *[Signature]* Date: 04/08/04

APPROVED EXCEPT AS NOTED

APPROVAL DRAWING

GIRARD ENGINEERING DEPT. ISSUED
Wednesday, March 24, 2004
TRINITY INDUSTRIES, INC.
1170 N. STATE STREET
GIRARD, OHIO 44420

RECEIVED
APR 1 2004
LICHTENSTEIN

This drawing and the information shown thereon is the sole property of TRINITY INDUSTRIES, INC. Neither the drawing nor such information is to be used for any purpose other than that for which it was specifically furnished by TRINITY INDUSTRIES, INC., nor is any reproduction authorized without written permission.

BILL OF MATERIAL

PRODUCT CODE	QTY.	DESCRIPTION	WT./EA.	REMARKS
87164G	14	POST x 2'-1 3/8"	96#	
87165G	4	POST x 7'-0"	185.5#	
87166G	4	POST x 6'-5"	170#	
87167G	14	ANCHOR PLATE	13.7#	
3619B	14	BEARING PAD	2.2#	
87168G	4	BACK-UP PLATE	16.9#	
35107A	14	SPLICE 7 x 3 x 3/8	39#	
35103A	14	SPLICE 3 x 3 x 5/16	18.7#	
925G	4	END SHOE (10 GA.)	22#	GUARDRAIL TERMINAL CONNECTOR
HARDWARE				
3390H	112	(5/8" x 1 3/4") HEX. HD. BOLT		A325 GRA A153
3300H	112	(5/8" WASHER, 1 3/4" O.D.)	TYPE A HARDENED	F436 A153
3352H	56	(5/8") LOCK HEX NUT		A153
3310H	112	(5/8") LOCK WASHER		
6984H	336	(3/4" x 6") SLOTTED RD. HD. BOLT		A325 A153
3702G	336	(3/4") PLAIN WASHER, 2" O.D.	TYPE A HARDENED	F436 A153
4682G	336	(3/4") LOCK HEX NUT		A194 GR. 2H A153
35209G	32	(3/4" SCH 40 PIPE x 1/2" LG.)	0.1#	A53 NOT DETAILED A123
5021H	56	(1" x 10") ANCHOR STUD	FULLY THREADED	A449 A153
4902H	136	(1") PLAIN WASHER		F436 A153
3908H	296	(1") HVY HEX NUT		A563 GR DH A153
3910H	112	(1") HEX NUT		A194 A153
5031G	80	(1" x 48") rod 8nc	THREADED 3" EACH END	ASTM A615 GR 60
PAY QUANTITY				
414'- 0 1/4"		ITEM NO. 525.33		STEEL BRIDGE RAIL (NETC)

NOTES:

- TUBING AND POSTS SHALL MEET THE REQUIREMENTS OF SECTION 732 - RAILING MATERIALS OF THE STANDARD SPECIFICATIONS FOR CONSTRUCTION, EXCEPT THE DROP WEIGHT TEAR TEST IN SECTION 732 SHALL NOT APPLY TO THE STRUCTURAL TUBING IN THIS STANDARD.
- ALL EXPOSED CUT OR SHEARED EDGES SHALL BE ROUNDED TO A 1/16" RADIUS AND BE FREE OF BURRS.
- GALVANIZED SURFACES SHALL HAVE A UNIFORM APPEARANCE AND GALVANIZED MATERIAL SHALL BE PROPERLY STORED WITH WOOD BLOCKING BETWEEN PIECES.
- RAIL POSTS.....ASTM A709, GRADE 50 SEE SECTION 732.03, SUBSECTION 2 BEARING PAD SHALL COMPLY WITH 731.01 OR 731.02.
- SHOP INSPECTION IS REQUIRED. CALL VERMONT AGENCY OF TRANSPORTATION TO SCHEDULE SHOP INSPECTION.
- RAIL POSTS & BASE PLATES SHALL BE TESTED FOR IMPACT PROPERTIES IN ACCORDANCE WITH ASTM A-370 CHARPY IMPACT TESTING USING TYPE A SPECIMEN.

ERECTION DETAILS ARE ON E1, E2 AND E3 OF 3

REV.	CHK'D	BY	DATE	REMARKS
PAY ITEM 525.33 NETC 2-RAIL				
STATE OF VERMONT AGENCY OF TRANSPORTATION TOWN OF MADISON, VT STRATFORD, NH PROJECT NO. NH BHO-1447-(24)				DRAWN MARLEY CHECKED SAR APPROVED
CUSTOMER WINTERSET INC		P.O. No. C-1308		DATE 3/4/04
TRINITY INDUSTRIES, INC. HIGHWAY SAFETY PRODUCTS 2525 STEMMONS FREEWAY, DALLAS, TX 75207				ENG. FILE # 22-1032196 SHT. No. D1 OF 3 TRINITY SALES ORDER NO. (22)1032196