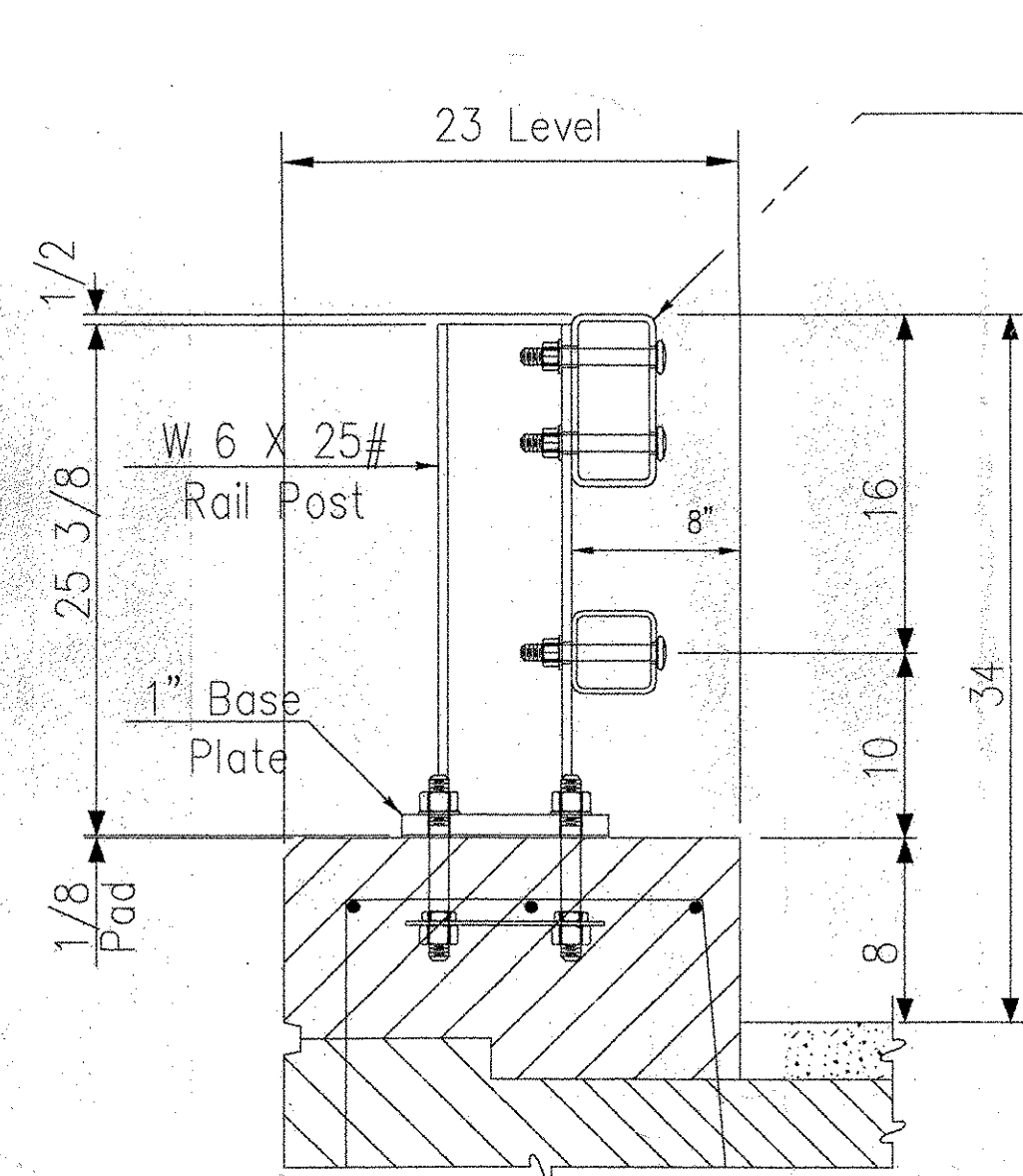
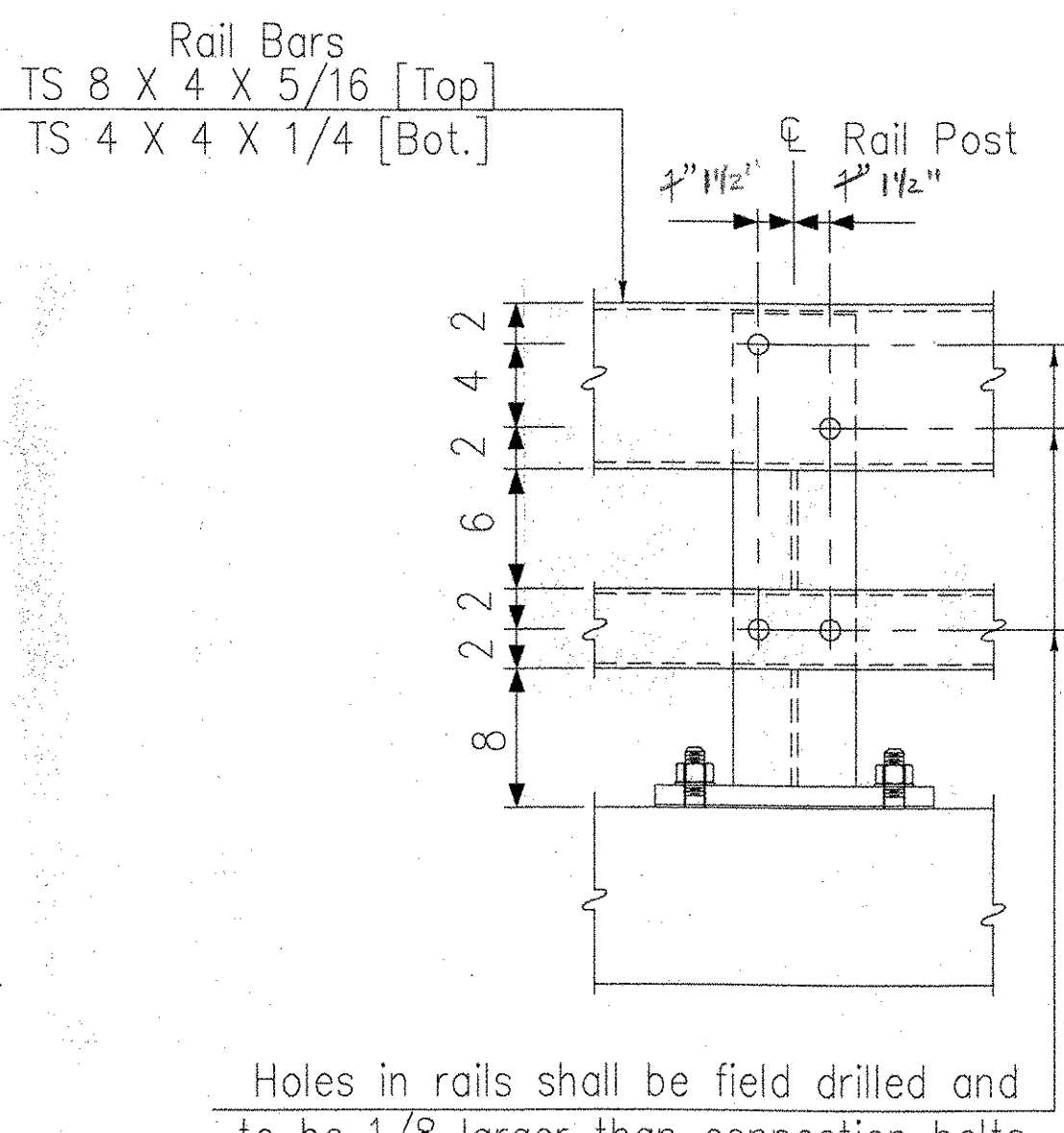


F:\RA\Share\Engineering\STATE\VT\1032196\22-1032196-E001.dwg 11:44:34 3/24/04

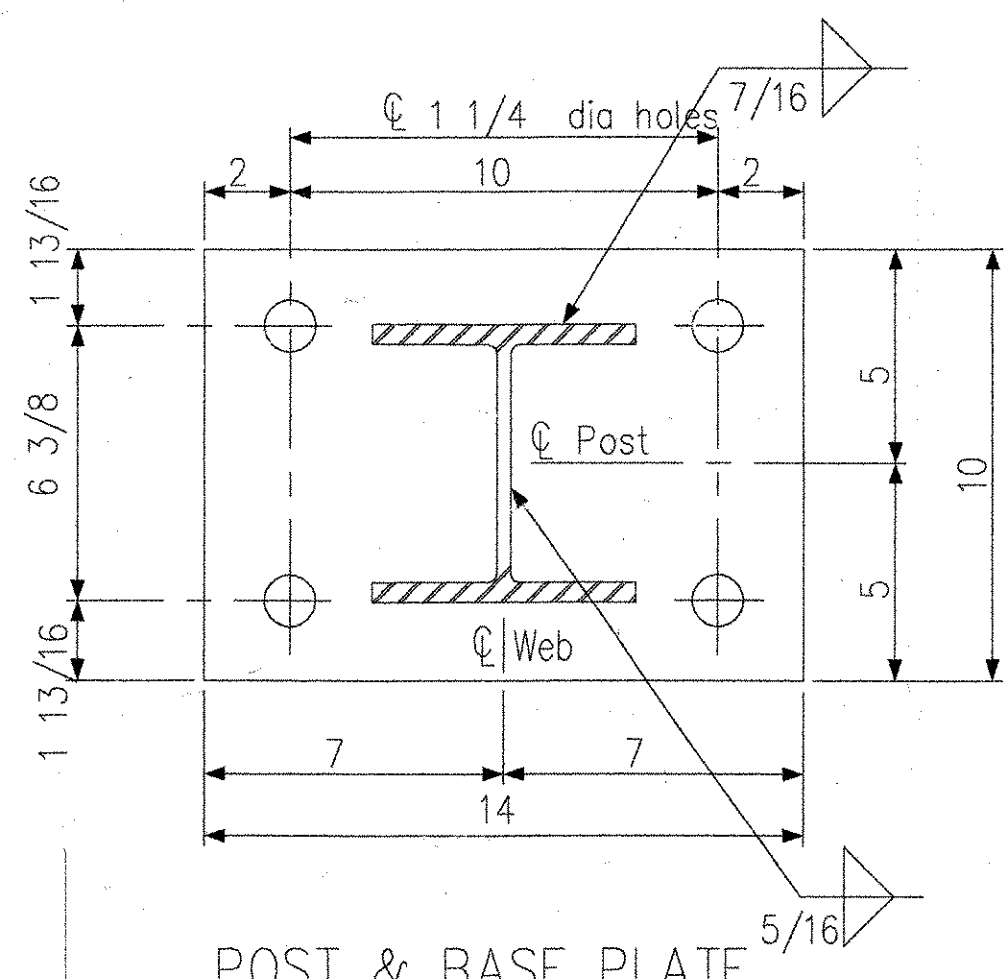


SPAN 1 RAIL POST

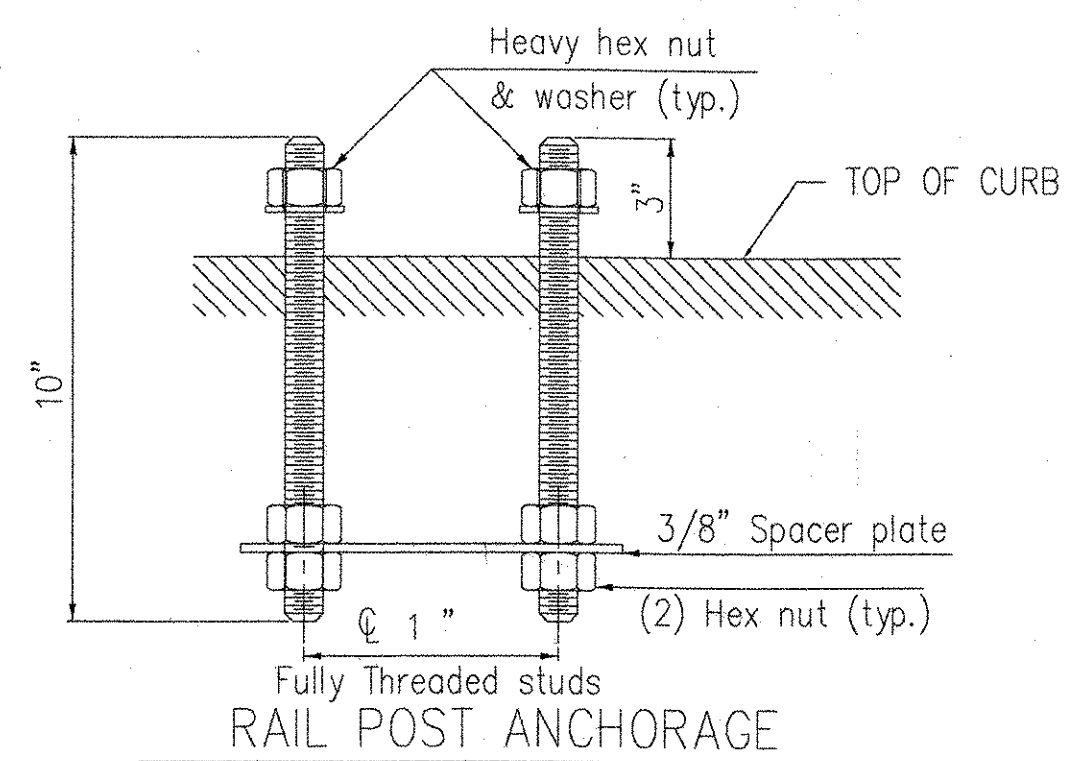


Holes in rails shall be field drilled and to be 1/8 larger than connection bolts.
3/4 dia x 6" round head bolt w/ washer & locknut

ELEVATION

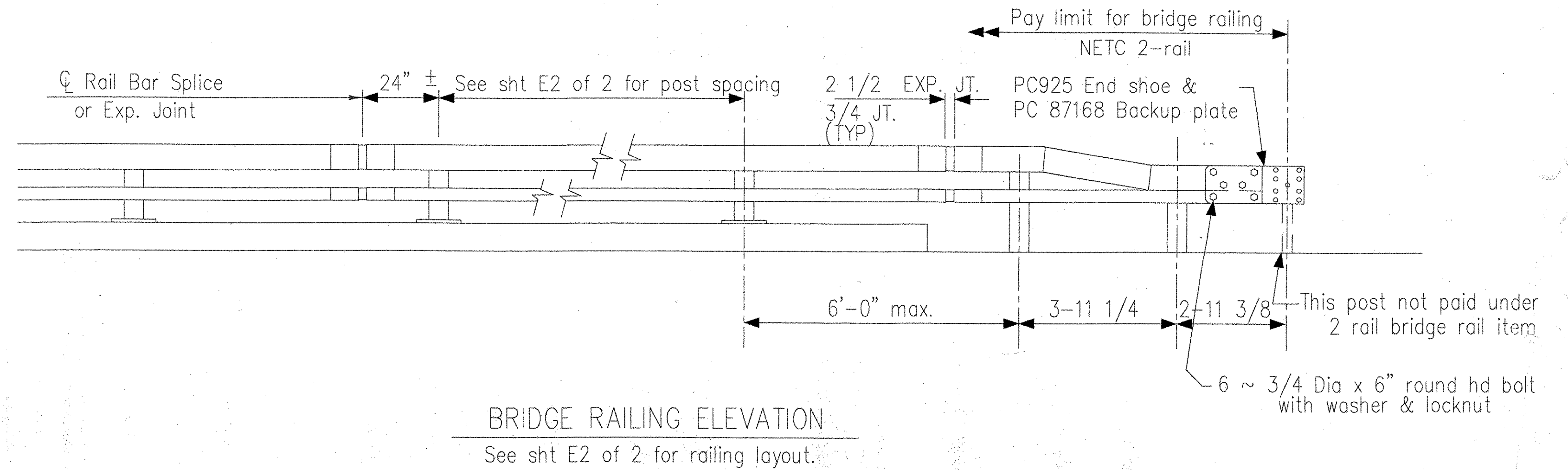


POST & BASE PLATE



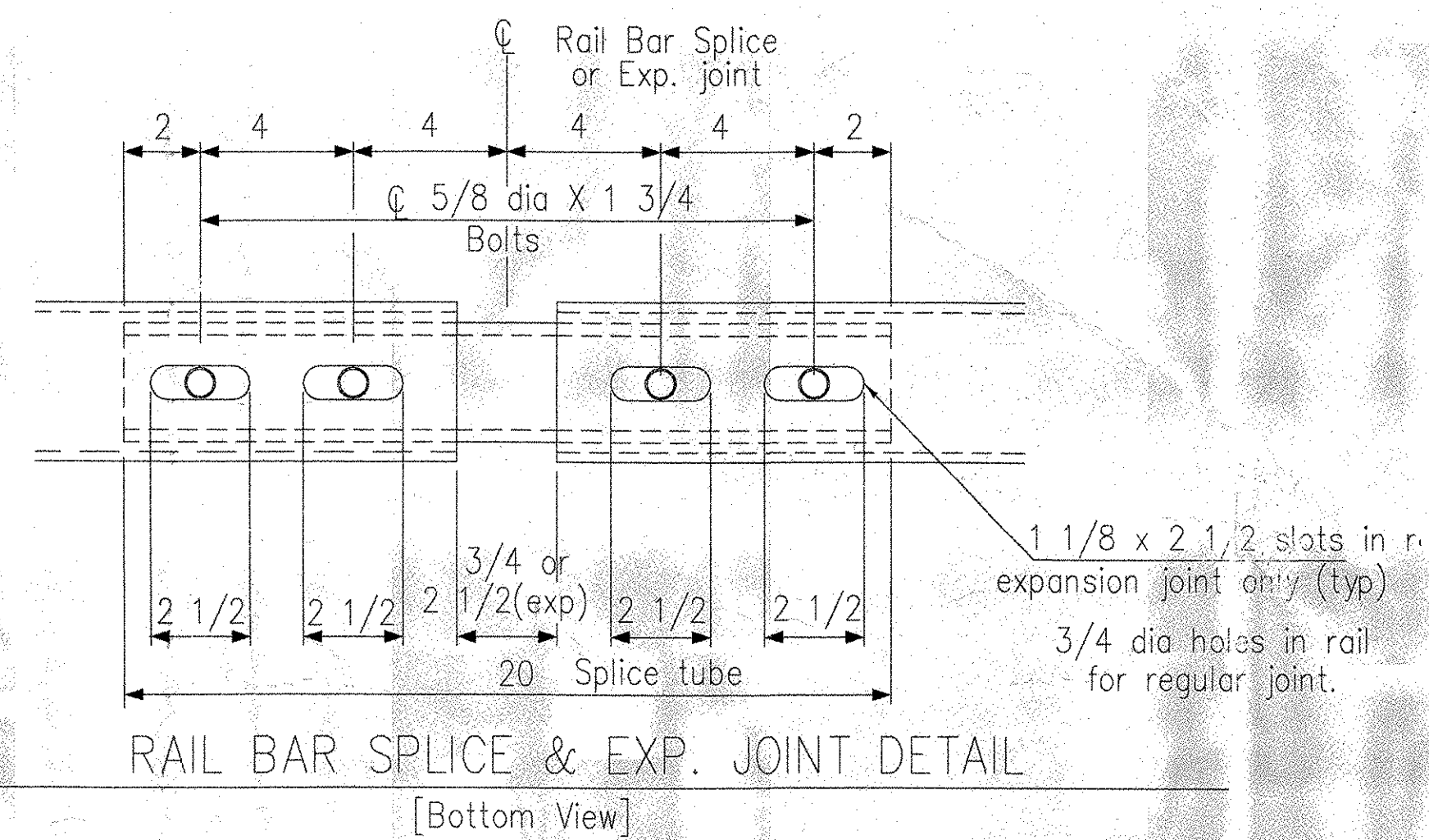
APPROVED EXCEPT AS NOTED

LICHTENSTEIN CONSULTING ENGINEERS, INC.
This drawing has only been checked for conformance with the design concept of the Project and compliance with the information given in the Contract Documents. Contractor is responsible for dimensions to be confirmed and validated at the job site, for information that pertains only to the fabrication processes or to techniques of construction; and for coordination of the work of all trades.
By M.T.W. Date 01/09/04



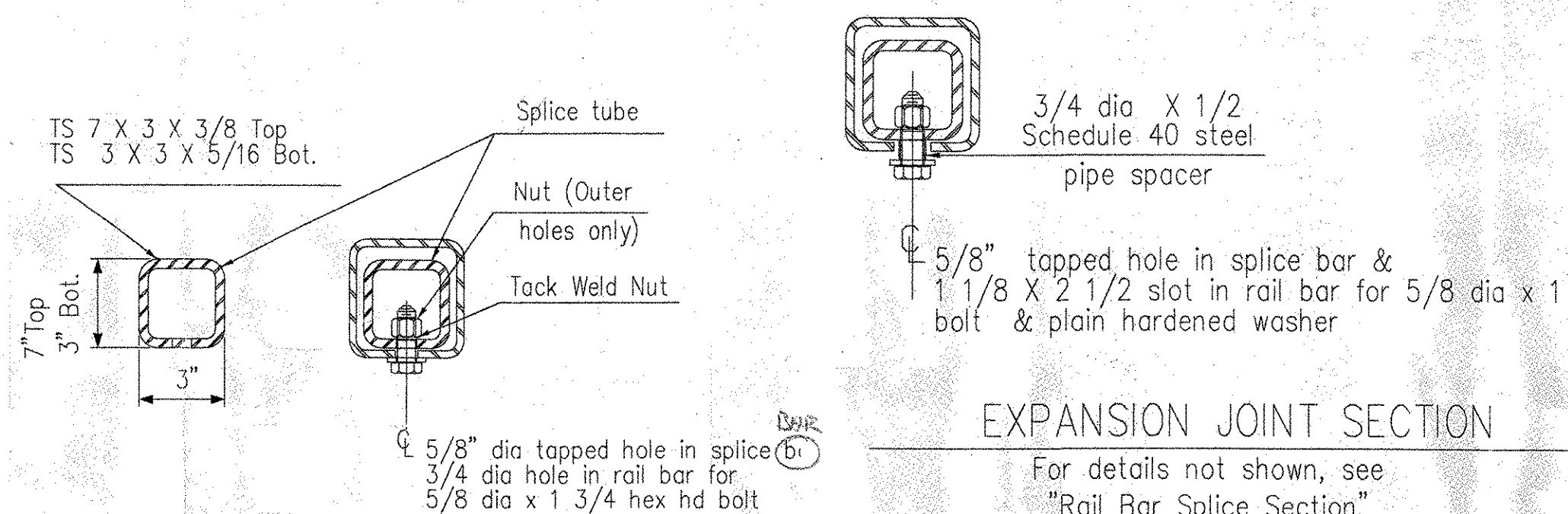
BRIDGE RAILING ELEVATION

See sht E2 of 2 for railing layout.



RAIL BAR SPICE & EXP. JOINT DETAIL

[Bottom View]



EXPANSION JOINT SECTION

For details not shown, see "Rail Bar Splice Section"

RAIL BAR SPICE SECTION

APPROVAL DRAWING

GIRARD ENGINEERING DEPT. ISSUED
Wednesday, March 24, 2004
TRINITY INDUSTRIES, INC.
1170 N. STATE STREET
GIRARD, OHIO 44420

NOTES

- All work and materials shall conform to the provisions of Section 525 - Railings of the Standard Specifications for Construction.
- Rail posts shall be set normal to grade.
- Sections of rail bar shall be attached to a minimum of two [2] rail posts and preferably to at least four [4] posts.
- Rail bar expansion joints shall be provided in any rail bay spanning a superstructure expansion joint. Expansion joint width shall be 65mm at 7 °C and will be adjusted in the field by the Engineer.
- All parts shall be galvanized after fabrication in accordance with AASHTO M111, except that hardware shall meet the requirements of AASHTO M232. Prior to galvanizing, all corners and edges of steel plates shapes, etc., shall be ground to a 1.6 mm radius.
- Rail posts anchoring nuts shall be tightened to a snug fit and given an additional 45 degree turn.
- Any bending of rail shall be by shop procedure, only.
- Holes in rails for rail bar attachment may be field drilled. Holes shall be coated with an approved zinc-rich paint prior to erection.
- Shop inspection is required.

SHOP DETAILS ARE ON D1 D2 AND D3 OF 3

V.A.O.T. RECEIVED
OK'D BY JWC

APR 01 2004
RESUBMIT APPROVED [Signature]
BY DATE 04-23-04

RECEIVED
APR 7 2004
LICHTENSTEIN

This drawing and the information shown thereon is the sole property of TRINITY INDUSTRIES, INC. Neither the drawing nor such information is to be used for any purpose other than that for which it was specifically furnished by TRINITY INDUSTRIES, INC. nor is any reproduction authorized without written permission.

REV.	CHK'D	BY	DATE	REMARKS
PAY ITEM 525.33 NETC-2-RAIL				
STATE OF VERMONT AGENCY OF TRANSPORTATION TOWN OF MADISON, VT STRATFORD, NH PROJECT NO. NH BHO-1447-(24)				DRAWN MARLEY CHECKED SAR APPROVED
CUSTOMER WINTERSET INC		P.O. No. C-1308		DATE 3/4/04
TRINITY INDUSTRIES, INC. HIGHWAY SAFETY PRODUCTS 2525 STEMMONS FREEWAY, DALLAS, TX 75207				ENG. FILE # 22-1032196 SHT. No. E1 OF 3 TRINITY SALES ORDER NO. (22)1032196 REV. 0