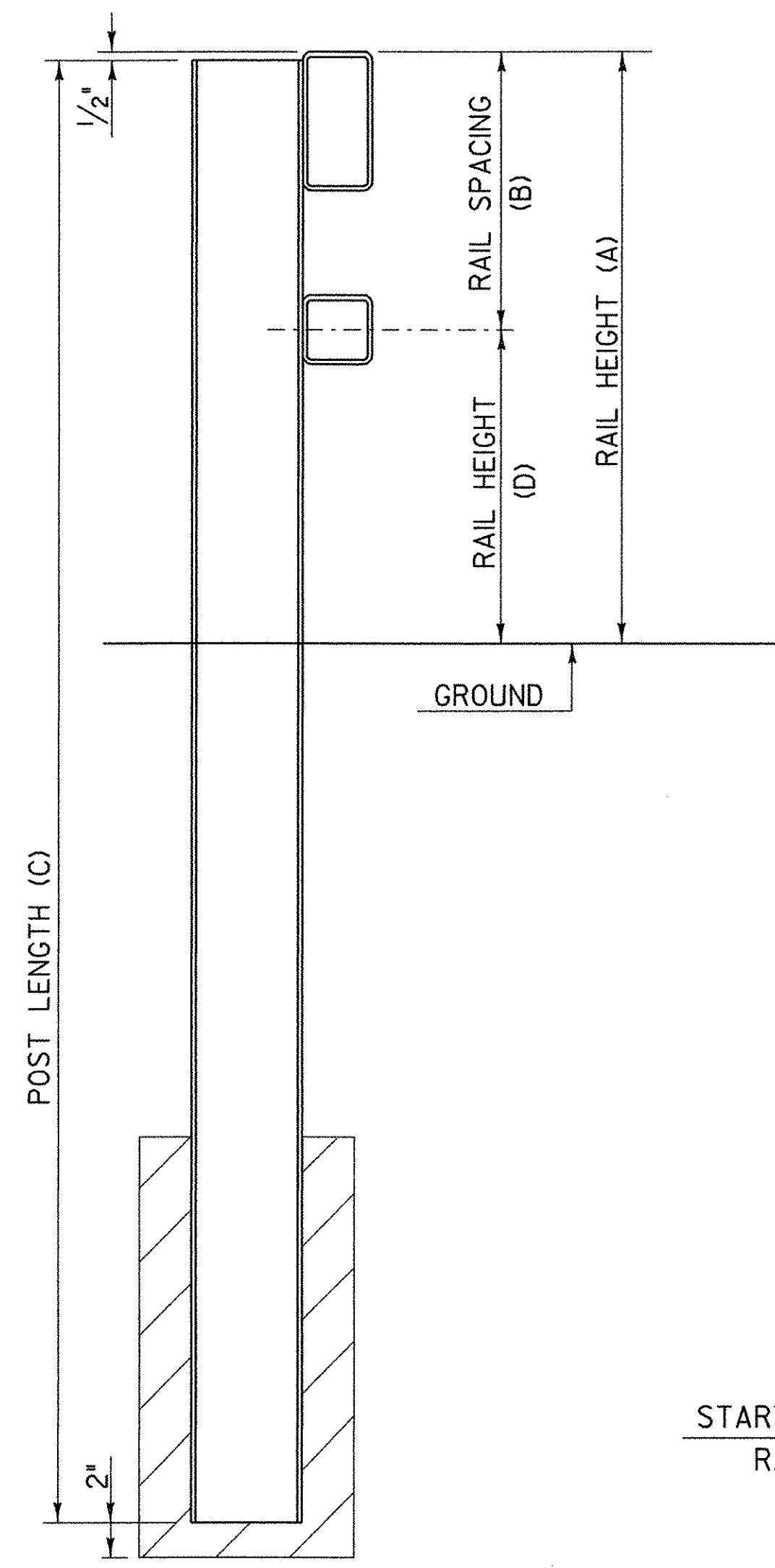
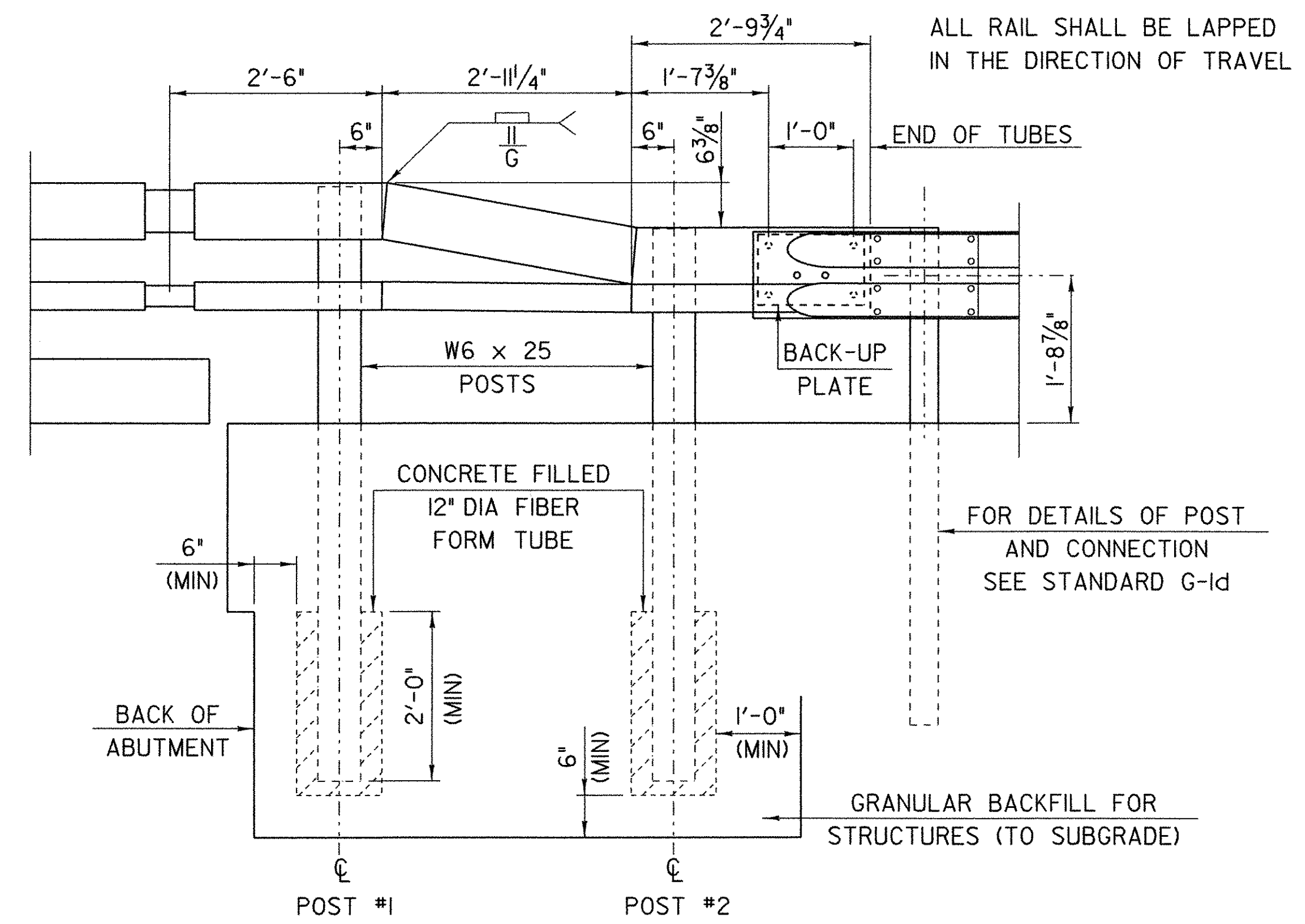


Notes:

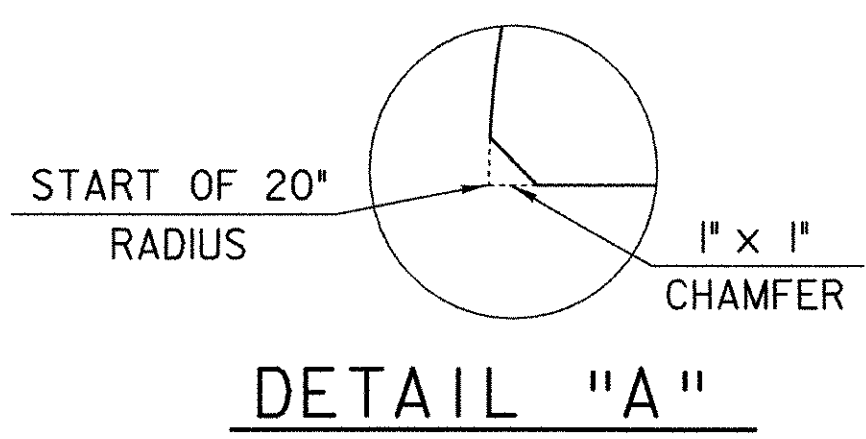
1. REFER TO STANDARD DETAIL BRI-97 FOR ADDITIONAL DETAILS, NOTES AND MATERIAL SPECIFICATIONS.
2. TO FACILITATE FIELD FIT - UP OF THE TRANSITION RAILING, POSTS SHALL BE SET LOOSELY INTO FIBER FORM TUBES WHILE TRANSITION PARTS ARE BEING ASSEMBLED. POST HOLES SHALL BE BACKFILLED WITH A CONCRETE MIX APPROVED BY THE ENGINEER. PAYMENT FOR COMPONENTS, INCLUDING BACKUP PLATE AND END TERMINAL CONNECTOR FOR GUARD RAIL, AUGERING, FIBER FORM TUBES AND CONCRETE, AND INSTALLATION SHALL BE CONSIDERED INCIDENTAL TO BRIDGE RAILING, N.E.T.C. 2 RAIL.
3. THE REFLECTORIZED ALUMINUM DELINEATION IS TO BE ERECTED EVERY 30' (OR CLOSEST POST) WITH A 5/8" DIAMETER BOLT. DELINEATORS SHALL MEET SPECIFICATION REQUIREMENTS FOR ASTM B209 ALLOY 5052-H32.
4. REFLECTIVE MATERIAL SHALL MEET REQUIREMENTS OF SUBSECTION 750.08 AND SHALL BE OF ENCAPSULATED LENS SILVER OR AMBER. AMBER IS TO BE INSTALLED ON THE DRIVER'S LEFT AND SILVER ON THEIR RIGHT.
5. ON BRIDGES WITH A SIDEWALK, DELINEATORS ARE NOT TO BE INSTALLED ON THE SIDEWALK SIDE OF THE BRIDGE (I.E. DELINEATORS INSTALLED ONLY ON THE CURB SIDE AND ON THE APPROACH ON THE CURB SIDE). PAYMENT SHALL BE SUBSIDIARY TO ALL OTHER ITEMS.
6. ALL APPROACH RAIL SPLICES SHALL BE LAPPED IN THE DIRECTION OF TRAFFIC FLOW.
7. SEE STANDARD G-1 AND G-1d FOR ADDITIONAL INFORMATION.

RAILING TRANSITION ELEVATION

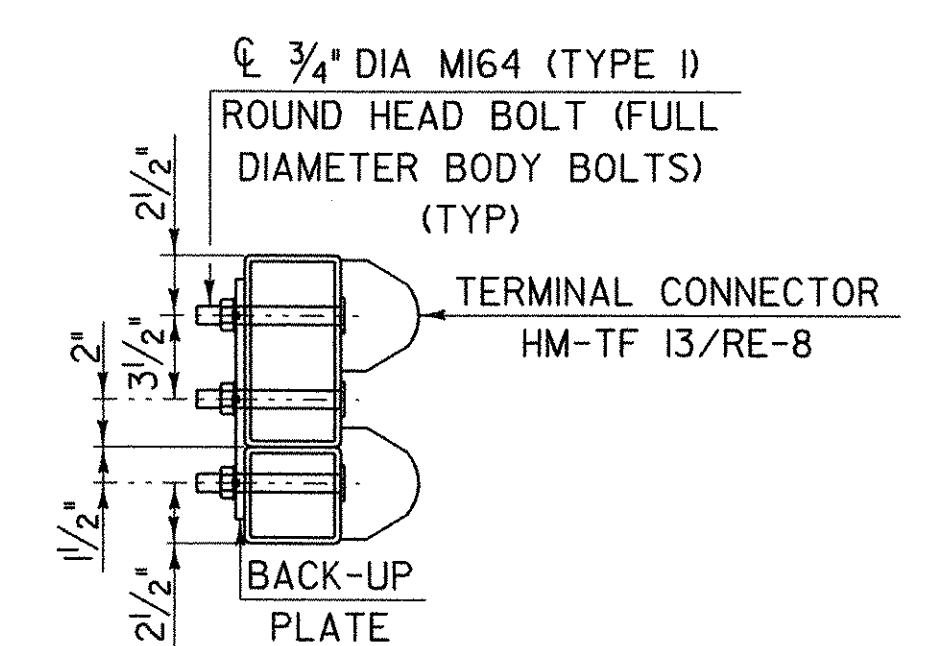


TYPICAL SECTION

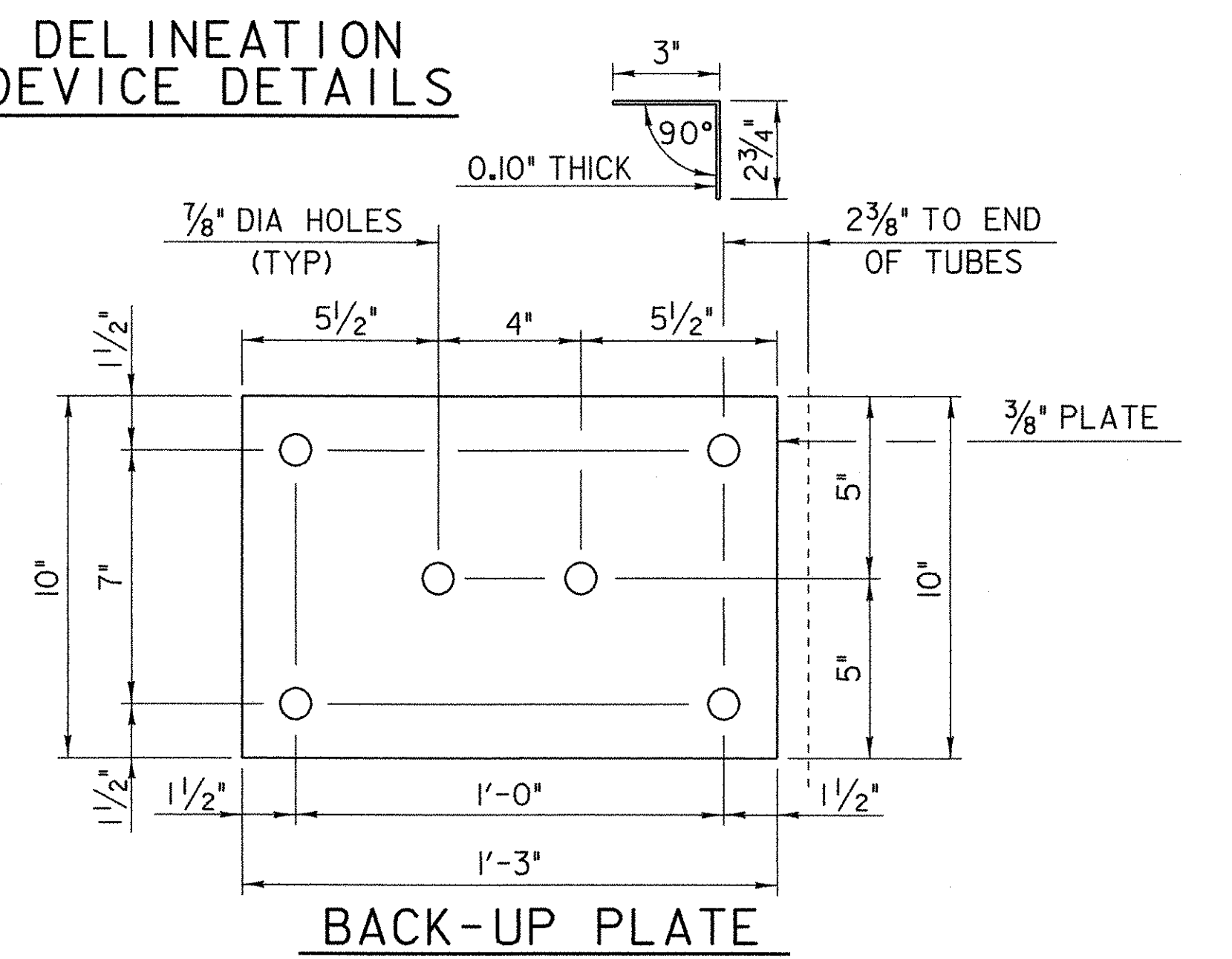
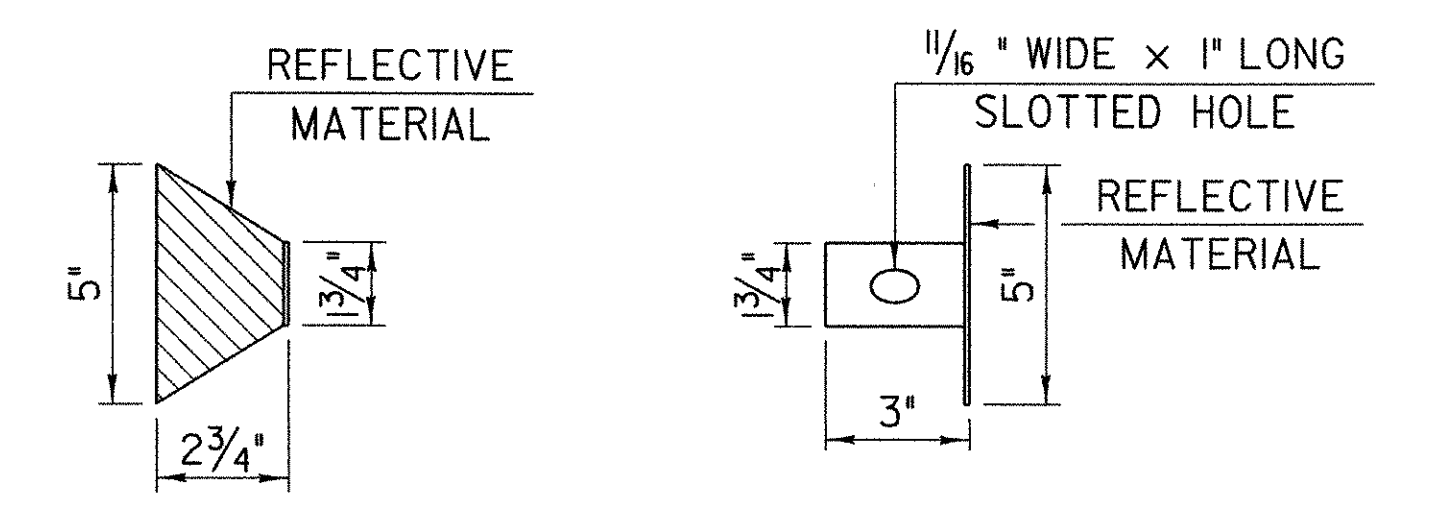
POST NUMBER	RAIL HEIGHT (A)	RAIL SPACING (B)	POST LENGTH (C)	RAIL HEIGHT (D)
1	2'-10"	1'-4"	7'-0"	1'-6"
2	2'-3 ⁵ / ₈ "	10"	6'-5"	1'-5 ⁵ / ₈ "



SECTION THROUGH GUARD RAIL CONNECTION AT TERMINAL CONNECTOR



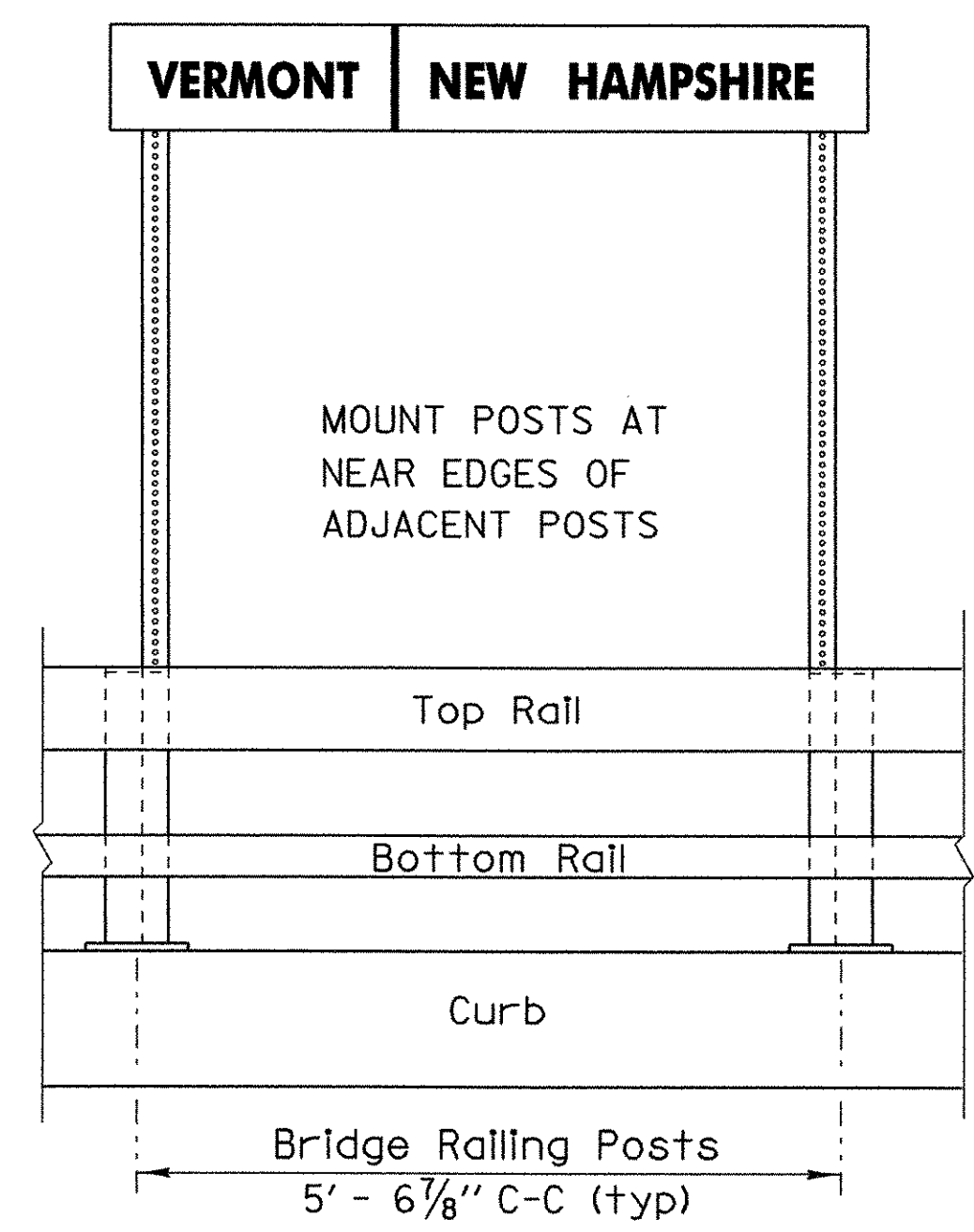
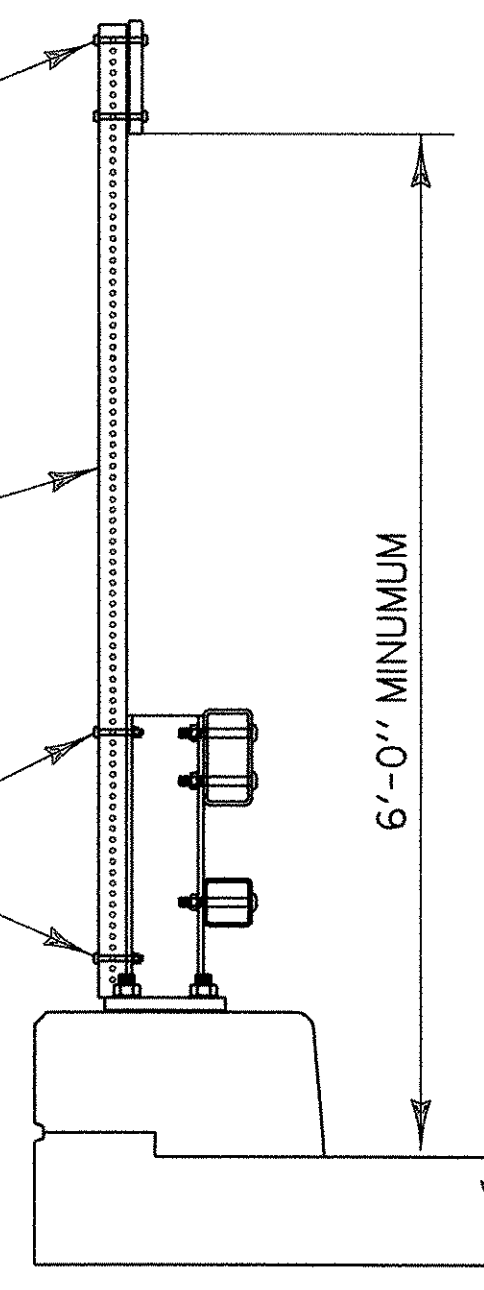
DELINEATION DEVICE DETAILS



FASTEN SIGN TO POSTS USING RIVETS OR OTHER VANDAL PROOF HARDWARE

2 1/2" SQUARE STEEL SIGN POST - TWO REQUIRED

FASTEN STEEL POSTS TO BACK FLANGE OF BRIDGE POSTS WITH TWO BOLTS. HOLES ON BRIDGE POSTS TO BE FIELD DRILLED.



STATE LINE SIGN INSTALLATION DETAILS

NETC RAIL DETAILS

PROJECT NAME: MAIDSTONE-STRATFORD, NH
 PROJECT NUMBER: BHO 1447(24)
 FILE NAME: str5/99e054/netcrail.dgn PLOT DATE: 24-JUL-2003
 PROJECT LEADER: C. Keller DRAWN BY: G. Shangraw
 DESIGNED BY: VAOT Structures CHECKED BY:
 netcrail.i SHEET 65b OF 65