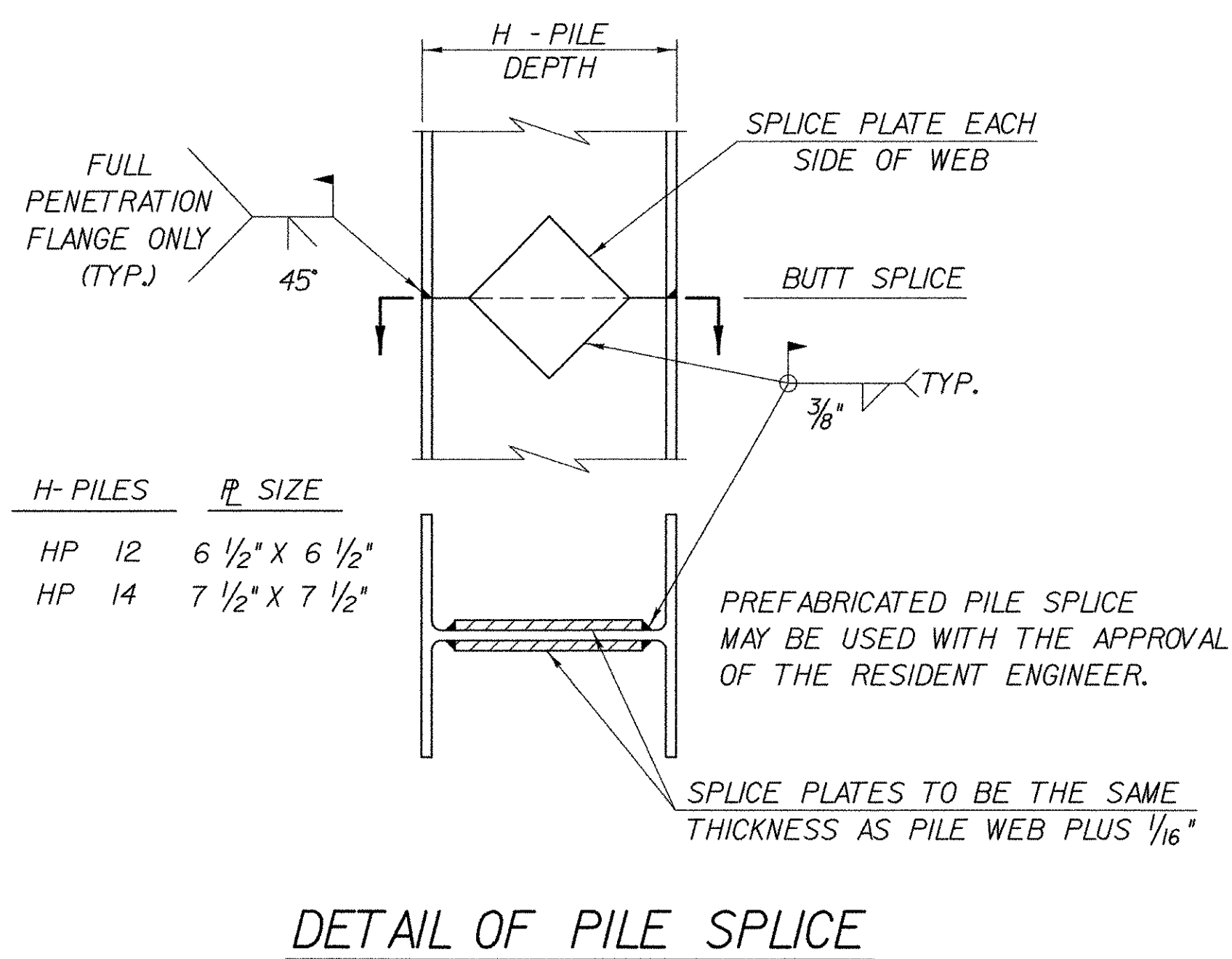
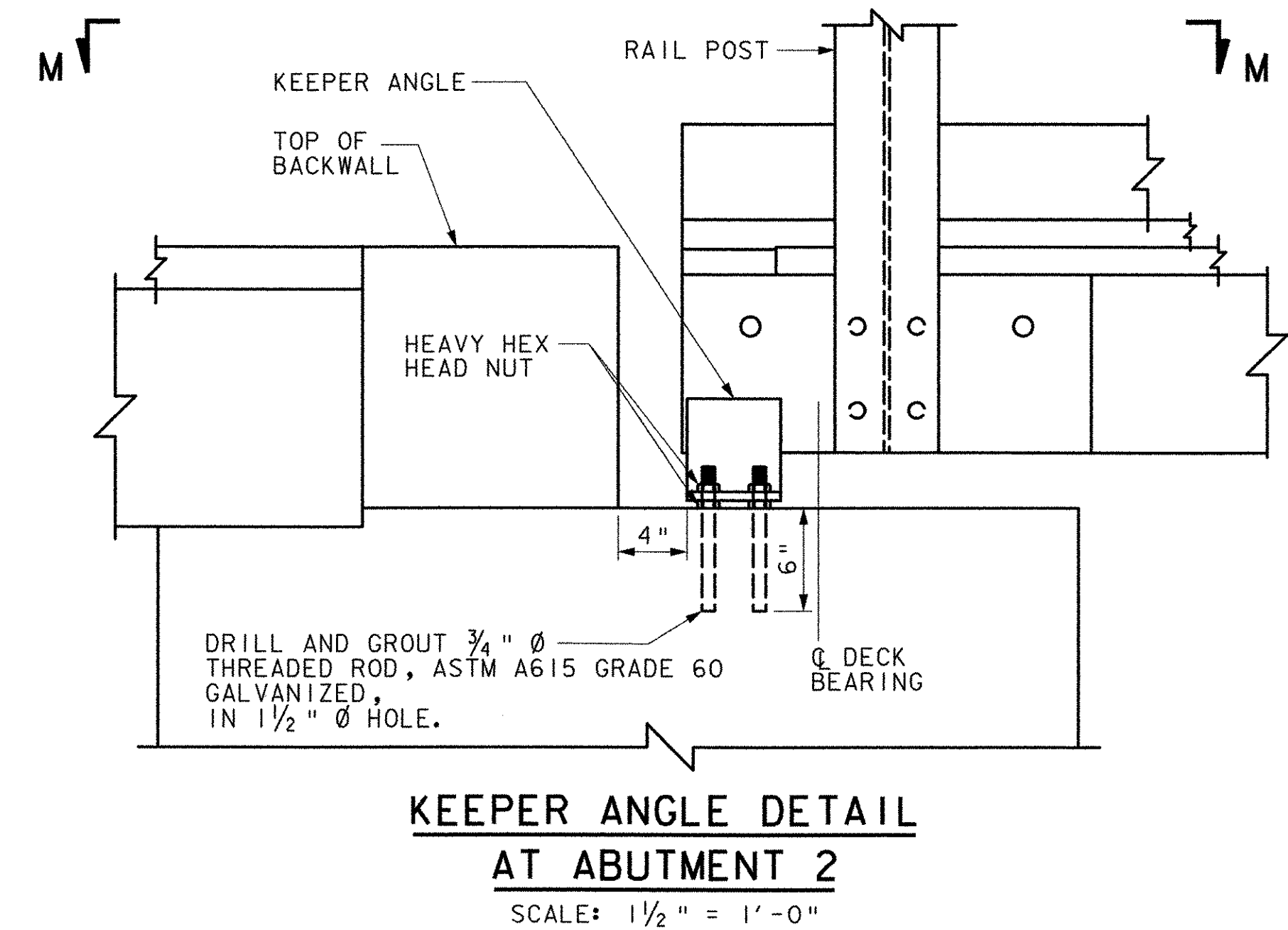
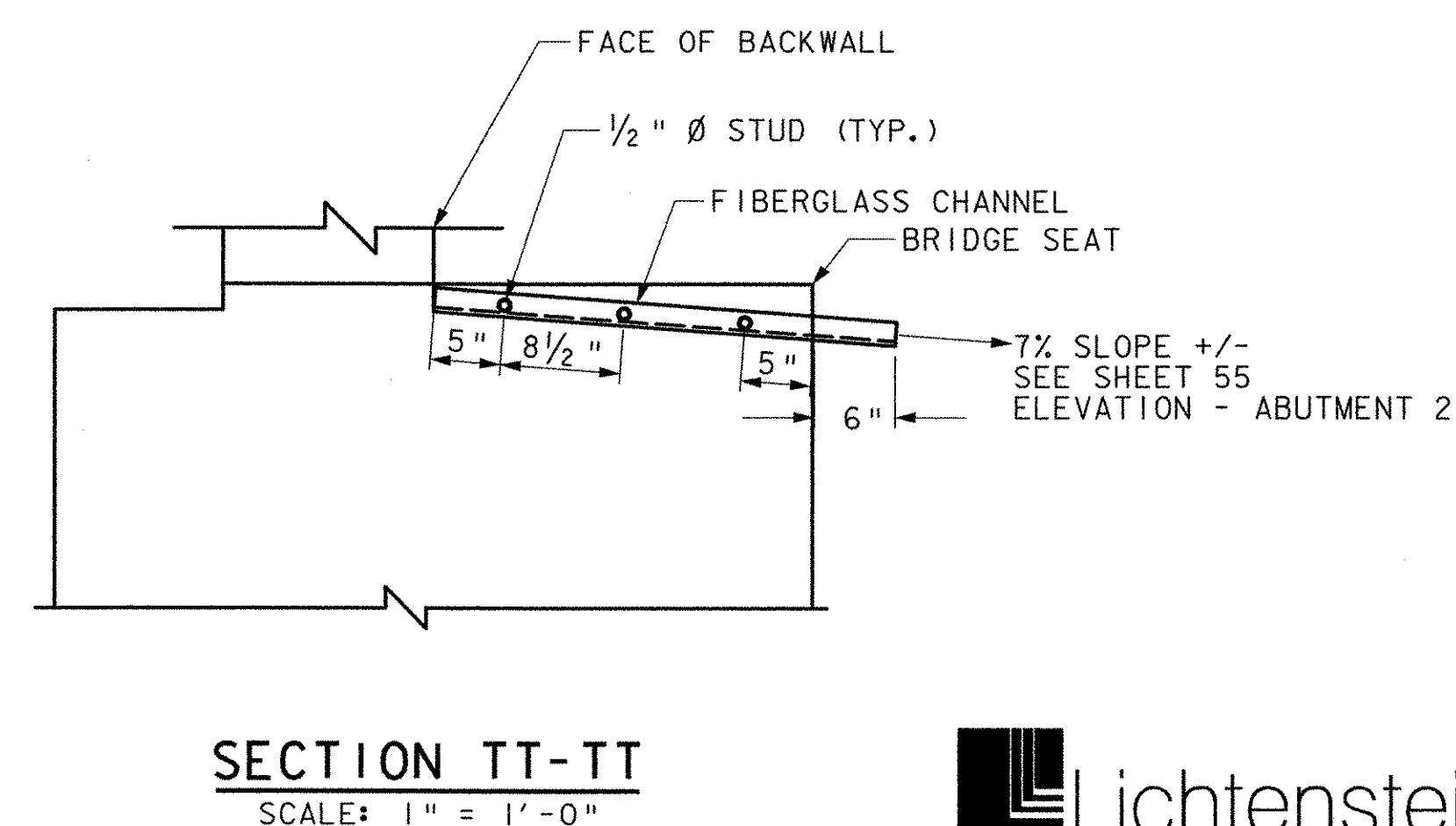
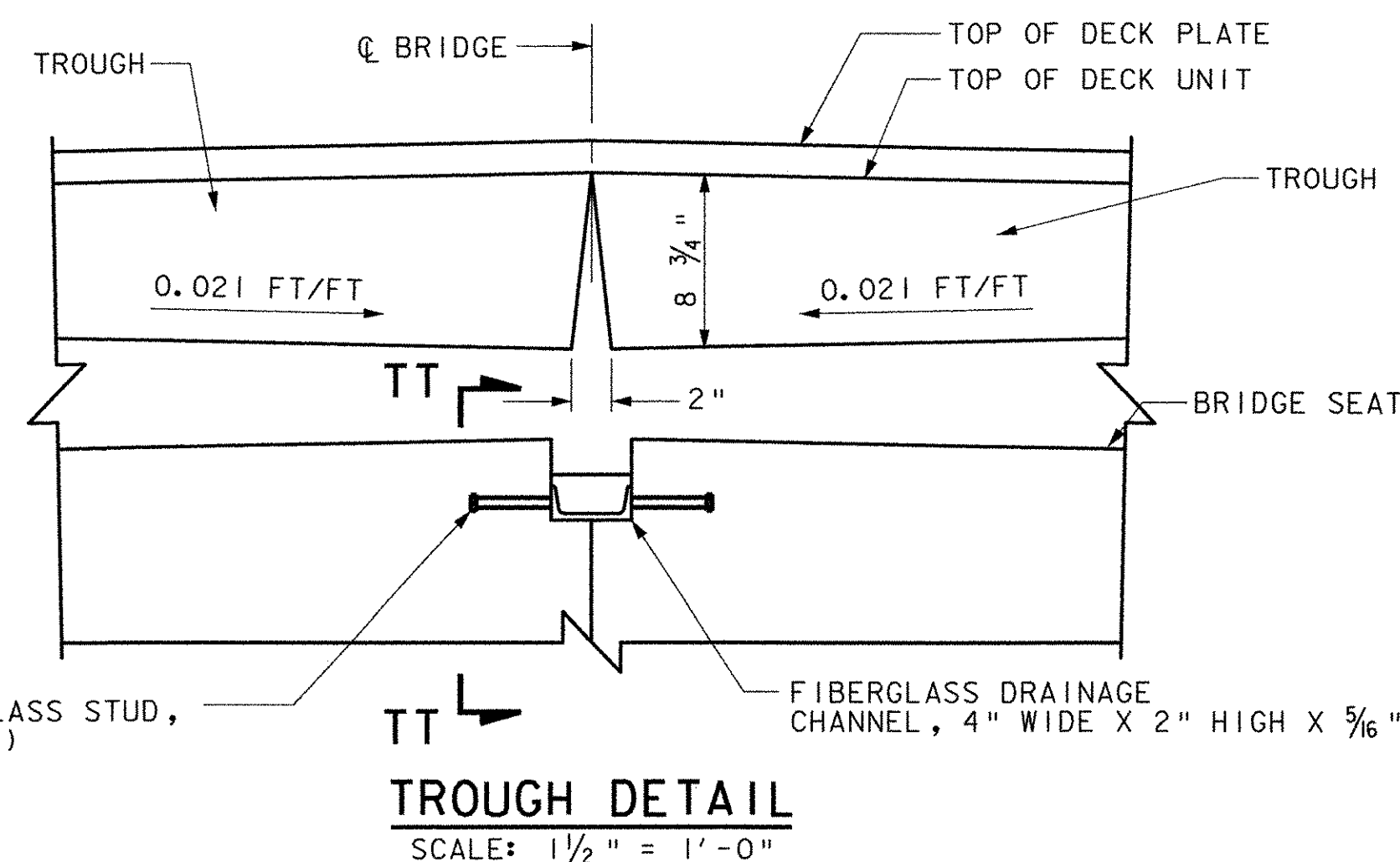


- PIER NOSE ANGLE NOTES:**
1. THE WORK, MATERIAL AND LABOR TO FABRICATE AND INSTALL THE PIER NOSE ANGLE SHALL BE SUBSIDIARY TO ITEM 501.34 "CONCRETE, HIGH PERFORMANCE CLASS B".
 2. THE SHEAR CONNECTORS SHALL CONFORM TO SECTION 508 OF THE VTRANS STANDARD SPECS.
 3. THE STEEL PLATES SHALL BE AASHTO M270M/M270 GRADE 50.
 4. AFTER FABRICATION THE ENTIRE PIECE SHALL BE GALVANIZED IN ACCORDANCE WITH ASTM A123/A123M.



- NOTES:**
1. THE MATERIALS, WORK, EQUIPMENT AND LABOR TO FORM THE CONCRETE, AND FABRICATE AND INSTALL THE FIBERGLASS CHANNEL WITH FIBERGLASS SHEAR STUDS SHALL BE CONSIDERED SUBSIDIARY TO ITEM 501.34 "CONCRETE, HIGH PERFORMANCE CLASS B".
 2. THE SHEAR STUDS SHALL BE INSTALLED WITH A HIGH STRENGTH EPOXY BONDING COMPOUND SUITABLE FOR USE WITH FIBERGLASS.



NOTE: KEEPER ANGLE, THREADED RODS, GROUT & INSTALLATION SHALL BE CONSIDERED SUBSIDIARY TO ITEM 522.40 "STRUCTURAL GLUED LAMINATED TIMBER".

STATE OF VERMONT AGENCY OF TRANSPORTATION		
Town Of	MAIDSTONE, VT STRATFORD, NH	Bridge No. 1
Highway No.	MAIDSTONE STATE HWY	Log Sta.
		Surv. Sta.
MISCELLANEOUS DETAILS		
Designed By	J. MESSIER	Drawn By C. DONOHUE
Checked By	Date	Bridge Design Supervisor
D. B. SULLIVAN	08/01/03	Date
PROJECT	MAIDSTONE-STRATFORD	PROJECT NO. BHO 1447 (24)
I.G.C. Info.		
Bridge Sheet No.		Sheet 49 of 65