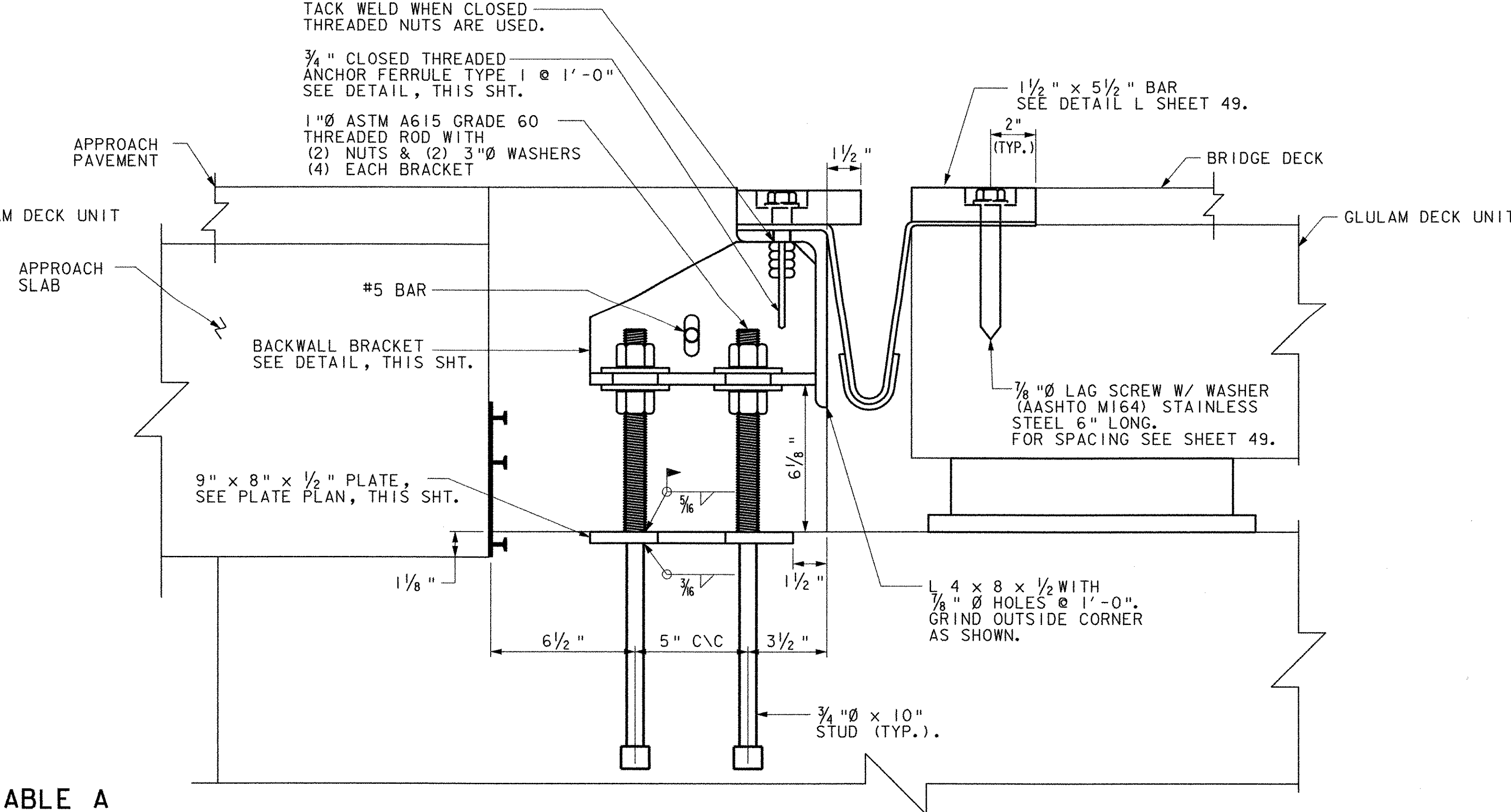


TYPICAL SECTION BETWEEN BRACKETS

SCALE: 3" = 1'-0"



TYPICAL SECTION @ BRACKETS

SCALE: 3" = 1'-0"

TABLE A

TEMP	"A" DIST
0° F	3"
15° F	2 3/4"
30° F	2 3/8"
45° F	2 3/16"
60° F	2 1/8"
75° F	2"
90° F	1 7/8"
105° F	1 5/8"

EXPANSION JOINT NOTES

1. DETAILS ON THIS SHEET ARE FOR ITEM 516.10 "BRIDGE EXPANSION JOINT".
2. DECK UNITS TO BE PLACED PRIOR TO INSTALLING THE JOINT AND POURING THE BACKWALL SO THAT CROSS SLOPE OF DECK UNITS CAN BE MATCHED BY THE CROSS SLOPE OF THE BACKWALL.
3. PREFORMED FABRIC MATERIAL SHALL BE CONTINUOUS AND SHALL CONFORM TO SUBSECTION 707.07.
4. BUTYL RUBBER TAPE SHALL CONFORM TO AASHTO SPECIFICATION M-198, TYPE 11.
5. THE FINAL FINISH OF THE EXPANSION DEVICE SHALL BE COVERED DURING THE PLACEMENT OF ADJACENT CONCRETE.
6. ALL STEEL EXP. JOINT COMPONENTS SHALL BE AASHTO M270 GRADE 36 GALVANIZED OR METALIZED AS PER SUBSECTION 506.15 (B) OR (C) UNLESS OTHERWISE SPECIFIED.
7. THE ITEM 516.10 "BRIDGE EXPANSION JOINT" SHALL INCLUDE THE FABRICATION AND ERECTION OF THE COMPLETE JOINT ASSEMBLY INCLUDING ALL STEEL PLATES, CURB PLATES, BRACKETS, ANGLES, WELDED STUDS OR RODS, PREFORMED FABRIC DRAIN TROUGH MATERIAL AND PLASTIC DRAIN TUBES, BUTYL RUBBER TAPE AND ANY OTHER MISCELLANEOUS MATERIAL NECESSARY TO INSTALL JOINT.
8. THE 4" x 8" x 1/2" ANGLES SHALL BE FURNISHED AS ONE CONTINUOUS PIECE. THE 1 1/2" x 5 1/2" BARS EACH SIDE OF THE JOINT SHALL BE PROVIDED IN TWO EQUAL LENGTHS.
9. COAT CONCRETE CONTACT SURFACES WITH EPOXY BONDING COMPOUND MEETING THE REQUIREMENTS OF SUBSECTION 719.02. PAYMENT FOR THE WORK SHALL BE CONSIDERED SUBSIDIARY TO ITEM 516.10 "BRIDGE EXPANSION JOINT".
10. FILL COUNTERBORED HOLES WITH HOT POURED JOINT SEALER AFTER BOLT INSTALLATION. PAYMENT FOR THE WORK SHALL BE SUBSIDIARY TO ITEM 516.10 "BRIDGE EXPANSION JOINT".
11. PAYMENT FOR WATERSTOP SHALL BE SUBSIDIARY TO ITEM 501.34 "CONCRETE CLASS B (HPC-B)".
12. A DRIP BEAD OF 1/4" x 7" STRIP OF PREFORMED MATERIAL SHALL BE CEMENTED TO THE BOTTOM OF THE FABRIC TROUGH USING AN ADHESIVE APPROVED BY THE MANUFACTURER. THE DRIP BEAD SHALL BE APPLIED 1" FROM THE END OF THE TROUGH.
13. FABRIC TROUGH SHALL BE THOROUGHLY CLEANED AND FLUSHED AFTER PAVING OPERATION.
14. THE EXPANSION JOINT SHALL BE SHOP ASSEMBLED AND SHIPPED AS ONE UNIT.
15. FOR FIXED END JOINT DETAILS, SEE SHT. 54.

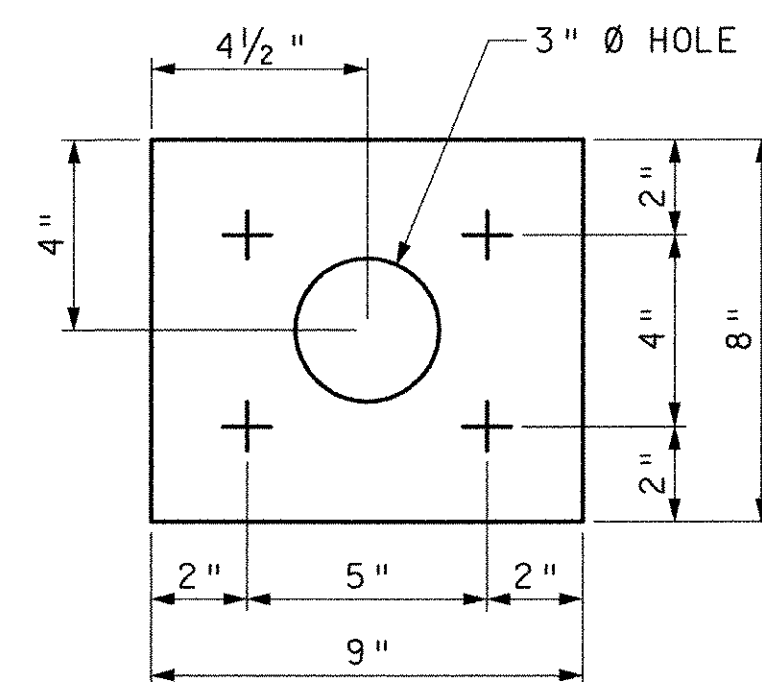
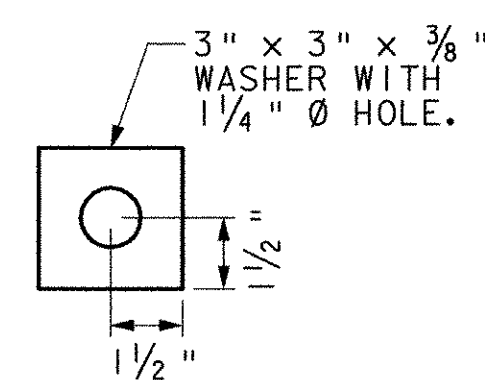


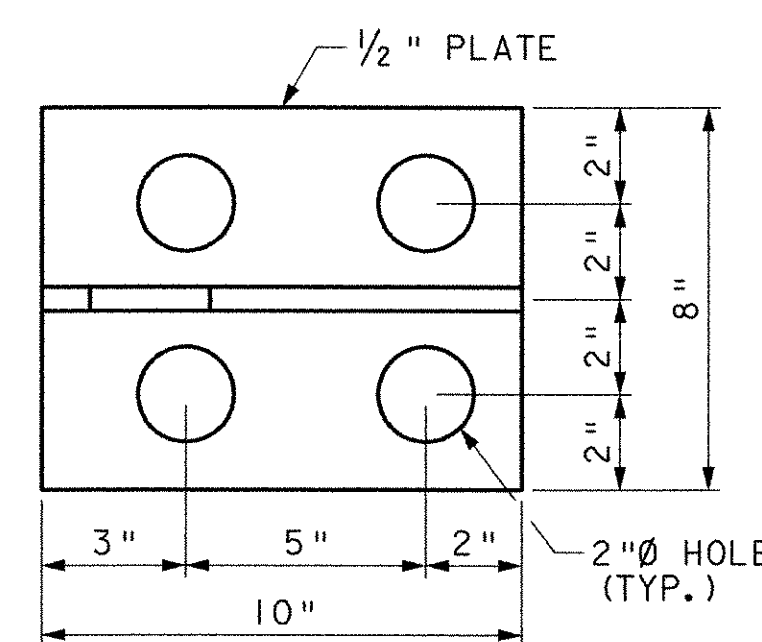
PLATE PLAN

SCALE: 3" = 1'-0"



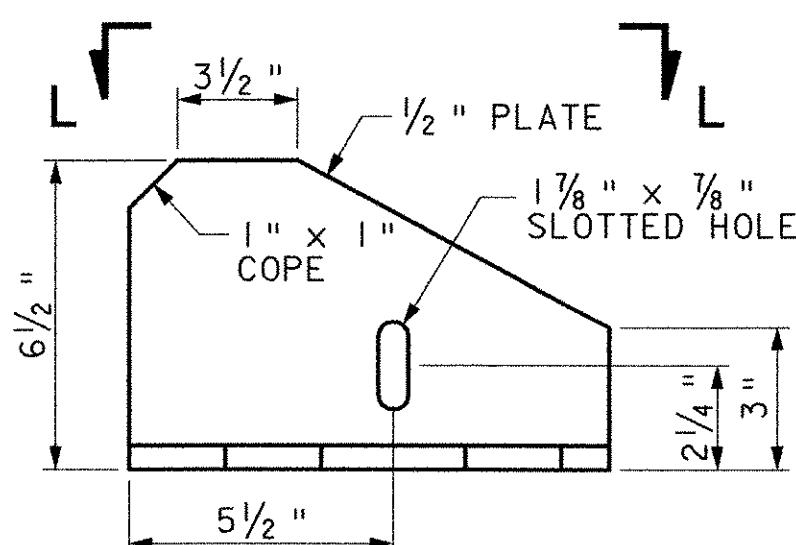
WASHER FOR BRACKET

SCALE: 3" = 1'-0"



SECTION L-L

SCALE: 3" = 1'-0"



BACKWALL BRACKET ELEVATION

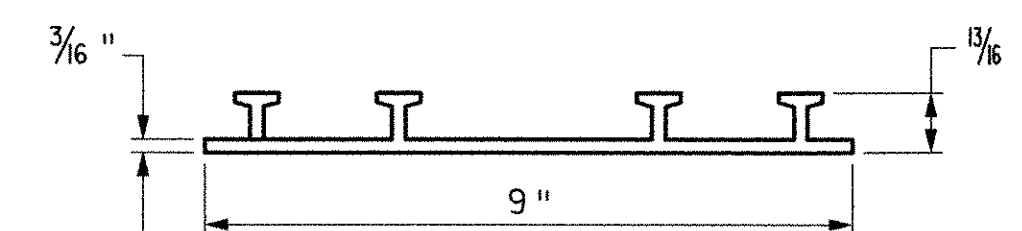
SCALE: 3" = 1'-0"



ANCHOR FERRULE DETAIL

SCALE: 3" = 1'-0"

NOTE: CLOSE THREADED FERRULE NUTS WITHOUT ANCHOR LOOPS MAY BE USED.



P.V.C. WATERSTOP FOR CONSTRUCTION JOINTS

N. T. S.

STATE OF VERMONT AGENCY OF TRANSPORTATION

Town Of	MAIDSTONE, VT STRATFORD, NH	Bridge No.	1
Highway No.	MAIDSTONE STATE HWY	Log Sta.	
		Surv. Sta.	

EXPANSION JOINT DETAILS

Designed By	J. MESSIER	Drawn By	C. DONOHUE
Checked By	Date	Bridge Design Supervisor	Date
	D. B. SULLIVAN		08/01/03

PROJECT	MAIDSTONE-STRATFORD	PROJECT NO.	BHO 1447 (24)
I.G.C. Info.			



p:\2077\accad\cgm\ze054j.r.dgn 13 AUG 2003