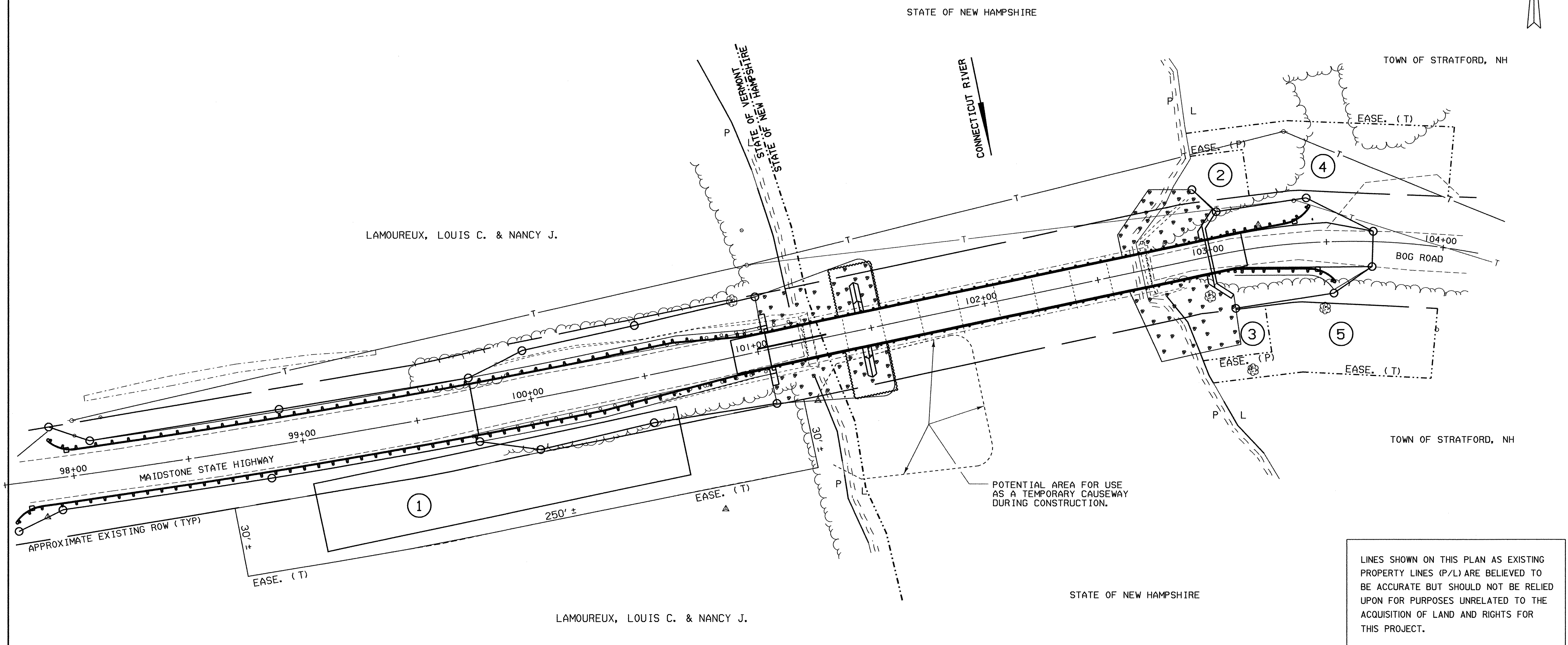
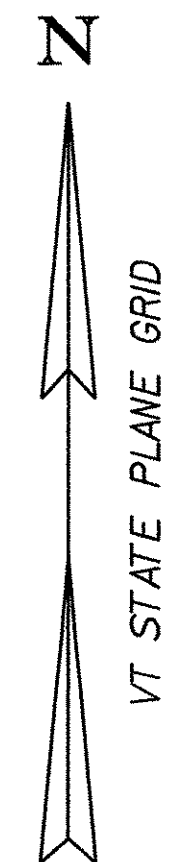


PARCEL NO.	GRANTOR	BEGINNING STATION	ENDING STATION	RIGHTS	REMARKS
1	LAMOUREUX, LOUIS C. & NANCY J.	98+65 RT.	101+15 RT.	EASE. (T) 0.1665A± (7253 SF)	STAGING AREA FOR BRIDGE REHABILITATION
2	TOWN OF STRATFORD, NH	102+84 LT.	103+23 LT.	EASE. (P) 0.0138A± (601 SF)	STONE FILL MAINTENANCE EASEMENT
3	TOWN OF STRATFORD, NH	102+83 RT.	103+18 RT.	EASE. (P) 0.0148A± (645 SF)	STONE FILL MAINTENANCE EASEMENT
4	TOWN OF STRATFORD, NH	103+01 LT.	104+00 LT.	EASE. (T) 0.0669A± (2914 SF)	STAGING AREA FOR BRIDGE REHABILITATION
5	TOWN OF STRATFORD, NH	102+88 RT.	104+00 RT.	EASE. (T) 0.0552A± (2405 SF)	STAGING AREA FOR BRIDGE REHABILITATION



LINES SHOWN ON THIS PLAN AS EXISTING PROPERTY LINES (P/L) ARE BELIEVED TO BE ACCURATE BUT SHOULD NOT BE RELIED UPON FOR PURPOSES UNRELATED TO THE ACQUISITION OF LAND AND RIGHTS FOR THIS PROJECT.

### ROW DETAIL SHEET

PROJECT NAME:	Maidstone - Stratford, NH
PROJECT NUMBER:	BHO 1447(24)
FILE NAME:	str5/99e054/rownh.dgn
PROJECT LEADER:	Craig Keller
DESIGNED BY:	
PLOT DATE:	18-AUG-2003
DRAWN BY:	
CHECKED BY:	
SHEET 24 OF 65 SHEETS	

