

646.40 DURABLE 100 mm WHITE LINE
 (ALL LINES WILL INCLUDE EDGE LINE BREAKS AND RADIUS FOR TOWN HIGHWAYS)
 U.S. ROUTE 7:
 STA. 5+360.0 - STA. 5+492.69I LT & RT

646.60 TEMPORARY 100 mm WHITE LINE
 (ALL LINES WILL INCLUDE EDGE LINE BREAKS AND RADIUS FOR TOWN HIGHWAYS)
 U.S. ROUTE 7:
 STA. 5+360.0 - STA. 5+492.69I LT & RT

646.41 DURABLE 100 mm YELLOW LINE
 (ALL LINES WILL INCLUDE C/L BREAKS FOR TOWN HIGHWAYS) S=SOLID, D=DASHED
 U.S. ROUTE 7:
 STA. 5+360.0 - STA. 5+436.4 S - S
 STA. 5+464.0 - STA. 5+492.69I S - S
 STA. 5+450.848 DOUBLE SOLID RT, T-5
 STA. 5+450.848 DOUBLE SOLID LT, T-326

646.61 TEMPORARY 100 mm YELLOW LINE
 (ALL LINES WILL INCLUDE C/L BREAKS FOR TOWN HIGHWAYS) S=SOLID, D=DASHED
 U.S. ROUTE 7:
 STA. 5+360.0 - STA. 5+436.4 S - S
 STA. 5+464.0 - STA. 5+492.69I S - S
 STA. 5+450.848 DOUBLE SOLID RT, T-5
 STA. 5+450.848 DOUBLE SOLID LT, T-326

646.46 DURABLE 600 mm STOP BAR (TYPE I TAPE)
 U.S. ROUTE 7:
 STA. 5+436.7 RT
 STA. 5+450.848 LT, T-326
 STA. 5+450.848 RT, T-5
 STA. 5+463.7 LT

646.66 TEMPORARY 600 mm STOP BAR
 U.S. ROUTE 7:
 STA. 5+436.7 RT
 STA. 5+450.848 LT, T-326
 STA. 5+450.848 RT, T-5
 STA. 5+463.7 LT

646.51 DURABLE CROSSWALK MARKING WITH DIAGONAL LINES (MOD.)
 U.S. ROUTE 7:
 STA. 5+443.7
 STA. 5+450.848 LT, T-326
 STA. 5+450.848 RT, T-5

646.71 TEMPORARY CROSSWALK MARKING WITH DIAGONAL LINES
 U.S. ROUTE 7:
 STA. 5+443.7
 STA. 5+450.848 LT, T-326
 STA. 5+450.848 RT, T-5

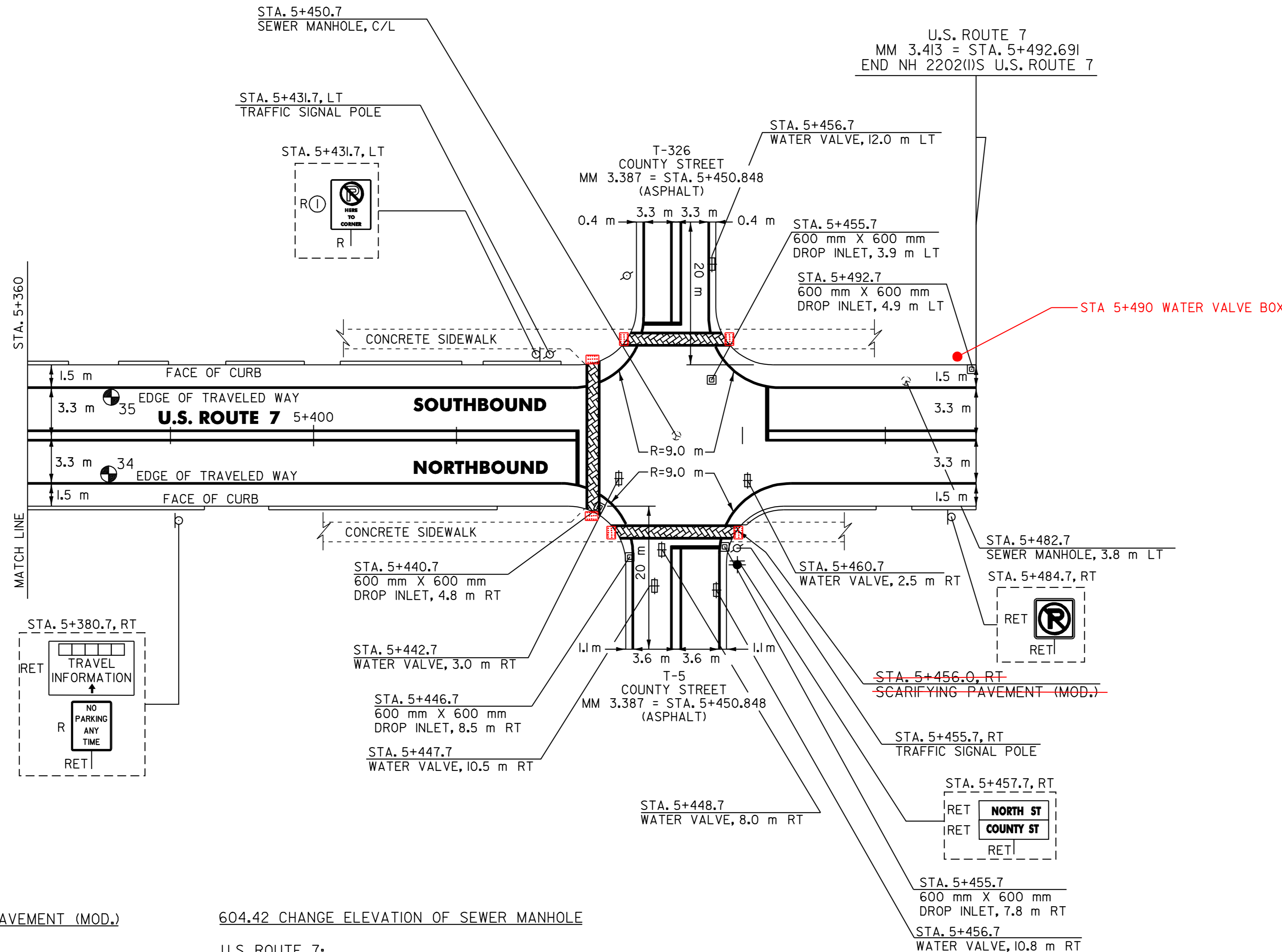
675.50 REMOVING SIGNS
 AS SHOWN - 2

ITEM 618.30 DETECTABLE WARNING SURFACE
 MOD TRUNCATED DOME SURFACE MOUNT

STA 5+442 LT 1.672 m²
 STA 5+447 LT 0.743 m²
 STA 5+455 RT 0.743 m²

ITEM 618.30 DETECTABLE WARNING SURFACE
 MOD TRUNCATED DOME CAST IN PLACE

STA 5+442 RT 1.858 m²



212.20 SCARIFYING PAVEMENT (MOD.)
 U.S. ROUTE 7:
 STA. 5+456.0 RT (R m²)

604.42 CHANGE ELEVATION OF SEWER MANHOLE
 U.S. ROUTE 7:
 STA. 5+450.7 C/L
 STA. 5+482.7 LT

604.40 CHANGE ELEVATION OF DI, CB OR MH
 U.S. ROUTE 7:
 STA. 5+440.7 RT
 STA. 5+446.7 RT
 STA. 5+455.7 LT
 STA. 5+455.7 RT
 STA. 5+492.7 LT

629.20 ADJUST ELEVATION OF VALVE BOX
 U.S. ROUTE 7:
 STA. 5+442.7 RT **STA. 5+490 LT**
 STA. 5+447.7 RT
 STA. 5+448.7 RT
 STA. 5+456.7 RT
 STA. 5+456.7 LT
 STA. 5+460.7 RT

NOTE:
 I. PAVING LIMIT ON ALL TOWN HIGHWAYS SHALL BE MEASURED 8 m BACK FROM U.S. ROUTE 7 EDGE OF SHOULDER UNLESS DENOTED OTHERWISE ON THE PLANS OR AS DIRECTED BY THE RESIDENT ENGINEER.

#	TOTAL DEPTH (mm)	PCC	COMMENTS
34	89	Y	
35	57	Y	

SIGN LEGEND
 R= REMOVE
 S= SALVAGE
 N= NEW
 RET= RETAIN
 B-B= BACK TO BACK
 EXISTING= _____
 NEW= _____

Ⓢ SIGN TO BE RETURNED TO THE TOWN OF BENNINGTON

PAVING PROJECT LAYOUT # 27

SURVEYED BY	N/A	DATE	N/A
DRAWN BY	J.A.R.	DATE	4/01
SQUAD LEADER	T.P.K.		
DESIGN FILE NO.	pave/99dl56/pdl56.dgn		
IPARM FILE	pdl56l27.i	DATE	NOV-2005 10
PROJ. NAME	BENNINGTON		
PROJ. NO.	NH 2202(I)S		
SHEET 40 OF 108		SHEETS	

DATUM	
VERTICAL	N/A
HORIZONTAL	N/A