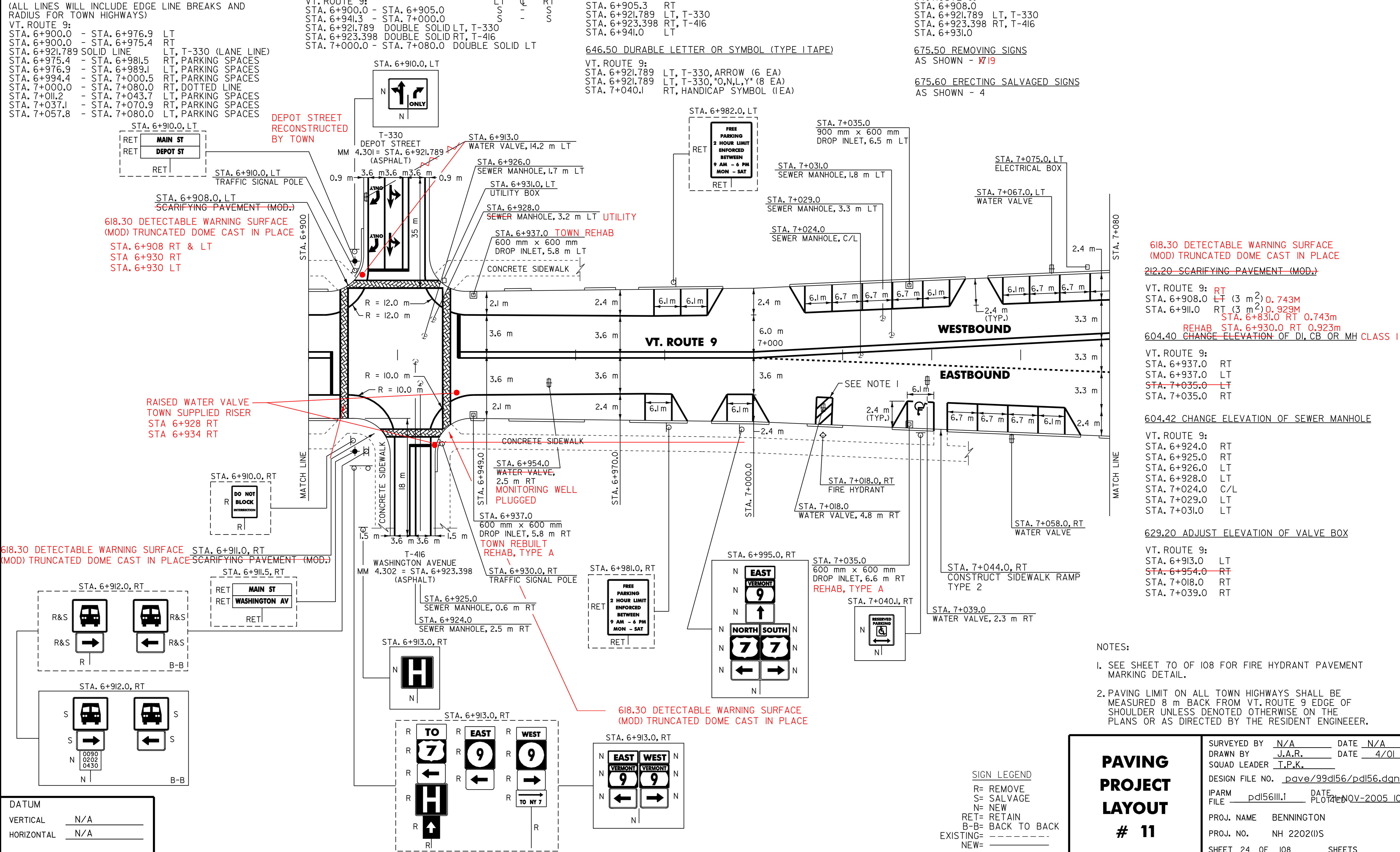


646.40 DURABLE 100 mm WHITE LINE
 (ALL LINES WILL INCLUDE EDGE LINE BREAKS AND RADIUS FOR TOWN HIGHWAYS)
 VT. ROUTE 9:
 STA. 6+900.0 - STA. 6+976.9 LT
 STA. 6+900.0 - STA. 6+975.4 RT
 STA. 6+921.789 SOLID LINE LT, T-330 (LANE LINE)
 STA. 6+975.4 - STA. 6+981.5 RT, PARKING SPACES
 STA. 6+976.9 - STA. 6+989.1 LT, PARKING SPACES
 STA. 6+994.4 - STA. 7+000.5 RT, PARKING SPACES
 STA. 7+000.0 - STA. 7+080.0 RT, DOTTED LINE
 STA. 7+011.2 - STA. 7+043.7 LT, PARKING SPACES
 STA. 7+037.1 - STA. 7+070.9 RT, PARKING SPACES
 STA. 7+057.8 - STA. 7+080.0 LT, PARKING SPACES
646.60 TEMPORARY 100 mm WHITE LINE
 (ALL LINES WILL INCLUDE EDGE LINE BREAKS AND RADIUS FOR TOWN HIGHWAYS)
 VT. ROUTE 9:
 STA. 6+900.0 - STA. 6+976.9 LT
 STA. 6+900.0 - STA. 6+975.4 RT
 STA. 6+921.789 SOLID LINE LT, T-330 (LANE LINE)
 STA. 6+975.4 - STA. 6+981.5 RT, PARKING SPACES
 STA. 6+976.9 - STA. 6+989.1 LT, PARKING SPACES
 STA. 6+994.4 - STA. 7+000.5 RT, PARKING SPACES
 STA. 7+000.0 - STA. 7+080.0 RT, DOTTED LINE
 STA. 7+011.2 - STA. 7+043.7 LT, PARKING SPACES
 STA. 7+037.1 - STA. 7+070.9 RT, PARKING SPACES
 STA. 7+057.8 - STA. 7+080.0 LT, PARKING SPACES

646.41 DURABLE 100 mm YELLOW LINE
 (ALL LINES WILL INCLUDE C/L BREAKS FOR TOWN HIGHWAYS) S=SOLID, D=DASHED
 VT. ROUTE 9:
 STA. 6+900.0 - STA. 6+905.0 LT S C RT
 STA. 6+941.3 - STA. 7+000.0 S - S
 STA. 6+921.789 DOUBLE SOLID LT, T-330
 STA. 6+923.398 DOUBLE SOLID RT, T-416
 STA. 7+000.0 - STA. 7+080.0 DOUBLE SOLID LT
646.61 TEMPORARY 100 mm YELLOW LINE
 (ALL LINES WILL INCLUDE C/L BREAKS FOR TOWN HIGHWAYS) S=SOLID, D=DASHED
 VT. ROUTE 9:
 STA. 6+900.0 - STA. 6+905.0 LT S C RT
 STA. 6+941.3 - STA. 7+000.0 S - S
 STA. 6+921.789 DOUBLE SOLID LT, T-330
 STA. 6+923.398 DOUBLE SOLID RT, T-416
 STA. 7+000.0 - STA. 7+080.0 DOUBLE SOLID LT

646.42 DURABLE 200 mm WHITE LINE
 VT. ROUTE 9:
 STA. 7+016.2 - STA. 7+019.8 RT, SHOULDER HATCHING (18.6 m)
646.46 DURABLE 600 mm STOP BAR (TYPE 1TAPE)
 VT. ROUTE 9:
 STA. 6+905.3 RT
 STA. 6+921.789 LT, T-330
 STA. 6+923.398 RT, T-416
 STA. 6+941.0 LT
646.66 TEMPORARY 600 mm STOP BAR
 VT. ROUTE 9:
 STA. 6+905.3 RT
 STA. 6+921.789 LT, T-330
 STA. 6+923.398 RT, T-416
 STA. 6+941.0 LT
646.50 DURABLE LETTER OR SYMBOL (TYPE 1TAPE)
 VT. ROUTE 9:
 STA. 6+921.789 LT, T-330, ARROW (6 EA)
 STA. 6+921.789 LT, T-330, "O,N,L,Y" (8 EA)
 STA. 7+040.1 RT, HANDICAP SYMBOL (1EA)

646.70 DURABLE TEMPORARY LETTER OR SYMBOL
 VT. ROUTE 9:
 STA. 6+921.789 LT, T-330, ARROW (12 EA)
646.51 DURABLE CROSSWALK MARKINGS WITH DIAGONAL LINES (MOD 2)
 VT. ROUTE 9:
 STA. 6+908.0
 STA. 6+921.789 LT, T-330
 STA. 6+923.398 RT, T-416
 STA. 6+931.0
646.71 TEMPORARY CROSSWALK MARKINGS WITH DIAGONAL LINES
 VT. ROUTE 9:
 STA. 6+908.0
 STA. 6+921.789 LT, T-330
 STA. 6+923.398 RT, T-416
 STA. 6+931.0
675.50 REMOVING SIGNS
 AS SHOWN - ~~X19~~
675.60 ERECTING SALVAGED SIGNS
 AS SHOWN - 4



618.30 DETECTABLE WARNING SURFACE (MOD) TRUNCATED DOME CAST IN PLACE
 STA. 6+908 RT & LT
 STA. 6+930 RT
 STA. 6+930 LT

RAISED WATER VALVE TOWN SUPPLIED RISER
 STA. 6+928 RT
 STA. 6+934 RT

618.30 DETECTABLE WARNING SURFACE (MOD) TRUNCATED DOME CAST IN PLACE
~~212.20 SCARIFYING PAVEMENT (MOD)~~

VT. ROUTE 9: RT
 STA. 6+908.0 LT (3 m²) 0.743M
 STA. 6+911.0 RT (3 m²) 0.929M
 STA. 6+831.0 RT 0.743m
REHAB STA. 6+930.0 RT 0.923m
604.40 CHANGE ELEVATION OF DI, CB OR MH CLASS 1
 VT. ROUTE 9:
 STA. 6+937.0 RT
 STA. 6+937.0 LT
 STA. 7+035.0 LT
 STA. 7+035.0 RT

604.42 CHANGE ELEVATION OF SEWER MANHOLE
 VT. ROUTE 9:
 STA. 6+924.0 RT
 STA. 6+925.0 RT
 STA. 6+926.0 LT
 STA. 6+928.0 LT
 STA. 7+024.0 C/L
 STA. 7+029.0 LT
 STA. 7+031.0 LT

629.20 ADJUST ELEVATION OF VALVE BOX
 VT. ROUTE 9:
 STA. 6+913.0 LT
 STA. 6+954.0 RT
 STA. 7+018.0 RT
 STA. 7+039.0 RT

- NOTES:
- SEE SHEET 70 OF 108 FOR FIRE HYDRANT PAVEMENT MARKING DETAIL.
 - PAVING LIMIT ON ALL TOWN HIGHWAYS SHALL BE MEASURED 8 m BACK FROM VT. ROUTE 9 EDGE OF SHOULDER UNLESS DENOTED OTHERWISE ON THE PLANS OR AS DIRECTED BY THE RESIDENT ENGINEER.

DATUM

VERTICAL	N/A
HORIZONTAL	N/A

SIGN LEGEND
 R= REMOVE
 S= SALVAGE
 N= NEW
 RET= RETAIN
 B-B= BACK TO BACK
 EXISTING= - - - - -
 NEW= _____

PAVING PROJECT LAYOUT # 11

SURVEYED BY	N/A	DATE	N/A
DRAWN BY	J.A.R.	DATE	4/01
SQUAD LEADER	T.P.K.		
DESIGN FILE NO.	pave/99dl56/pdl56.dgn		
IPARM FILE	pdl56iii.1	DATE	21 NOV-2005 10:21
PROJ. NAME	BENNINGTON		
PROJ. NO.	NH 2202(1)S		
SHEET 24 OF 108		SHEETS	