

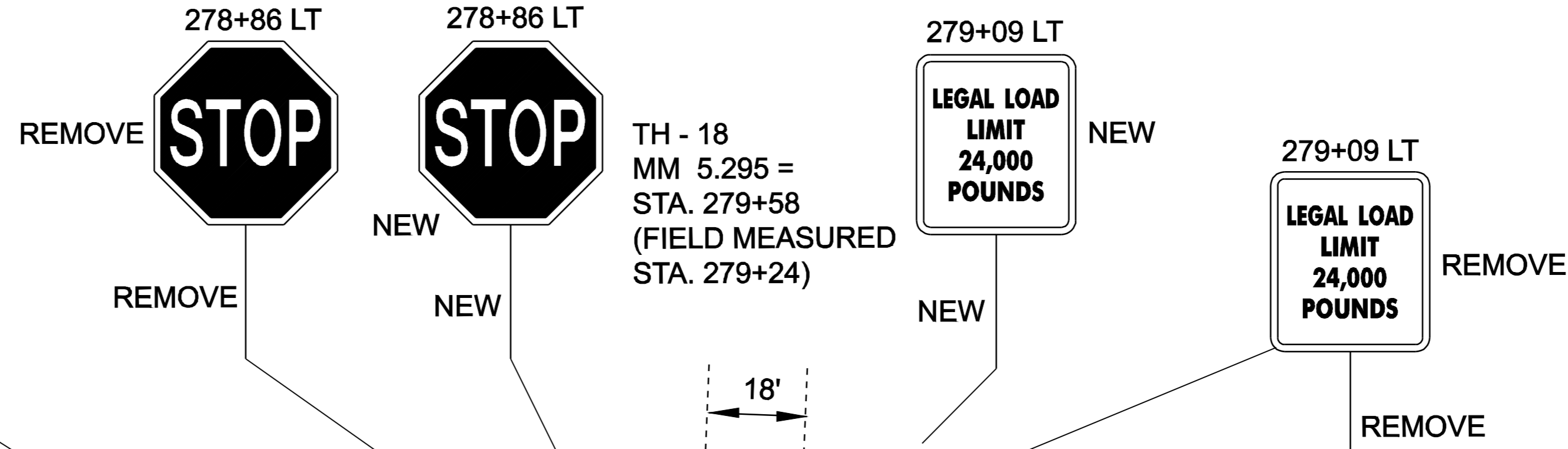
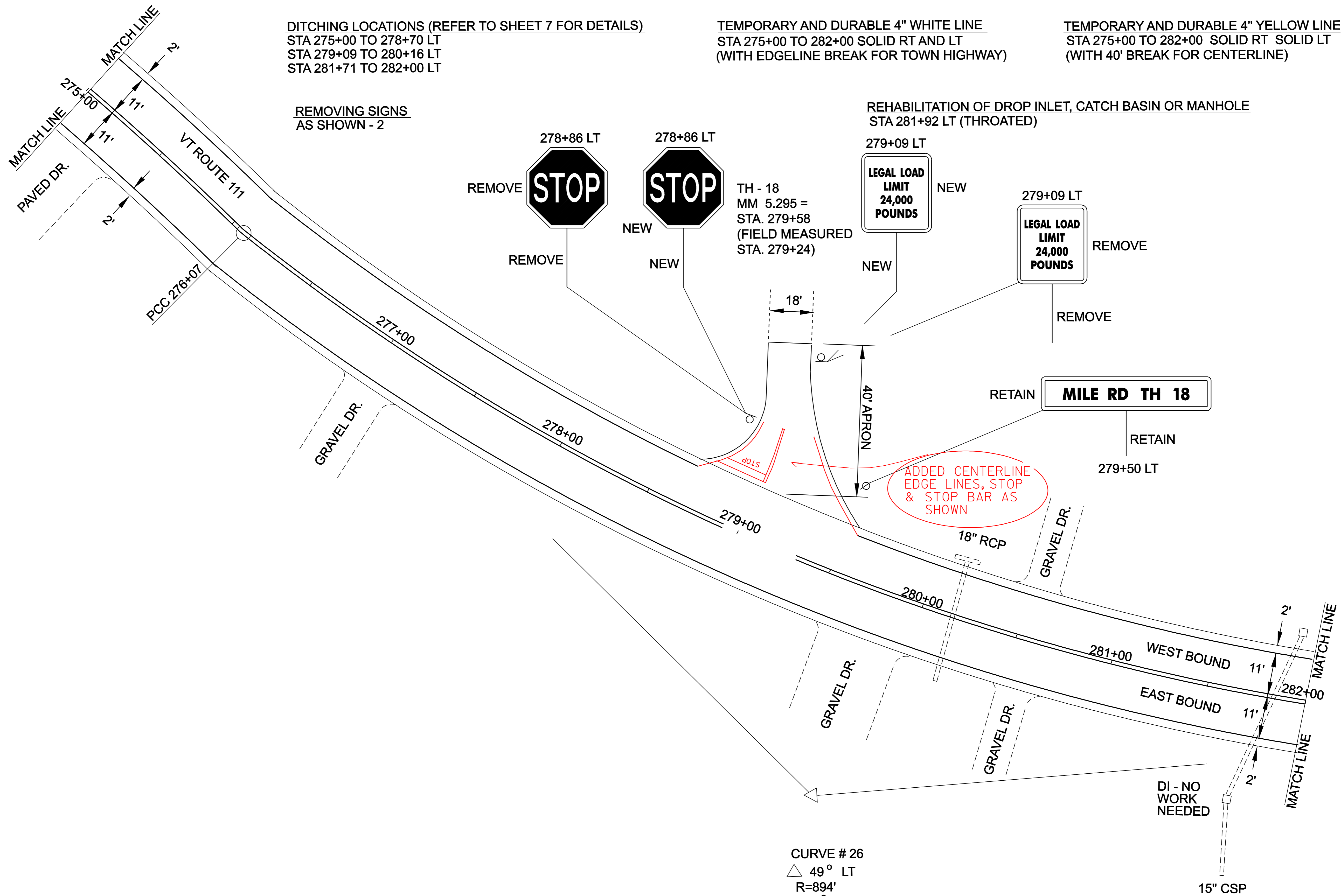
DITCHING LOCATIONS (REFER TO SHEET 7 FOR DETAILS)
 STA 275+00 TO 278+70 LT
 STA 279+09 TO 280+16 LT
 STA 281+71 TO 282+00 LT

TEMPORARY AND DURABLE 4" WHITE LINE
 STA 275+00 TO 282+00 SOLID RT AND LT
 (WITH EDGELINE BREAK FOR TOWN HIGHWAY)

TEMPORARY AND DURABLE 4" YELLOW LINE
 STA 275+00 TO 282+00 SOLID RT SOLID LT
 (WITH 40' BREAK FOR CENTERLINE)

REMOVING SIGNS
 AS SHOWN - 2

REHABILITATION OF DROP INLET, CATCH BASIN OR MANHOLE
 STA 281+92 LT (THROATED)



ADDED CENTERLINE
 EDGE LINES, STOP
 & STOP BAR AS
 SHOWN

CURVE # 26
 Δ 49° LT
 R=894'
 D=6° 25'
 T=407.34'
 L=765'
 BANKING 0.079 FT/FT
 190' RUNOFF (50 MPH)
 SEE SHEET 52 FOR
 BANKING DETAIL

PROJECT LAYOUT SHEET # 31	DESIGNED BY	LFW	DATE	6/04
	DRAWN BY	LFW	DATE	6/04
	DESIGN FILE NO.	pave/99cl92/99cl92.dgn		
	PRF FILE	99cl92p31.1	DATE PLOTTED	12-MAR-2007 11:3
	PROJ. NAME	MORGAN		
PROJ. NO.	AC STP 2220(1)S			
SHEET	38	OF	61	SHEETS