

TEMPORARY AND DURABLE 4" WHITE LINE
 STA 205+00 TO 213+00 SOLID RT AND LT
 (WITH EDGELINE BREAK FOR TOWN HIGHWAY)

TEMPORARY AND DURABLE 4" YELLOW LINE
 STA 205+00 TO 213+00 SOLID RT SOLID LT
 (WITH 40' BREAK FOR CENTERLINE)

REMOVING SIGNS
 AS SHOWN - 2

DITCHING LOCATIONS (REFER TO SHEET 7 FOR DETAILS)
 STA 205+00 TO 208+80 LT
 STA 208+96 TO 213+00 LT

REMOVAL AND DISPOSAL OF GUARDRAIL
 STA 205+45.0 TO 207+30.0 RT (185')

~~STEEL BEAM GUARDRAIL~~
~~STA 205+82.5 TO 206+95.0 RT (112.5')~~

REMOVAL AND DISPOSAL OF GUIDE POSTS
 STA 207+36 RT (1)
 STA 208+00 TO 209+95 RT (13)
 STA 212+64 TO 213+00 RT (3)

~~STEEL BEAM GUARDRAIL W/8 FOOT POSTS~~
~~STA 208+37.5 TO 209+62.5 RT (125')~~

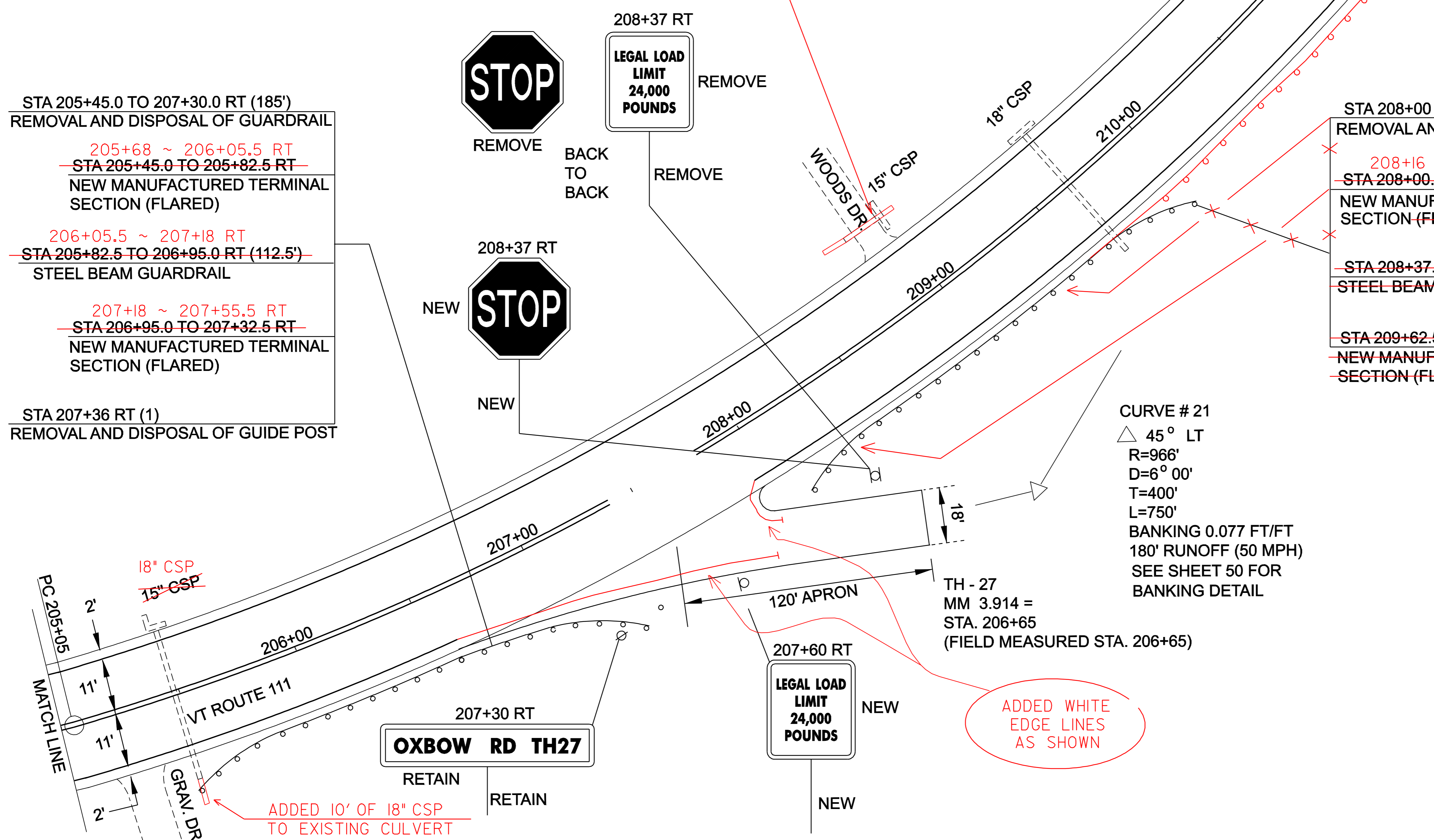
STA 212+64 TO 213+00 RT (3)
 REMOVAL AND DISPOSAL OF
 GUIDE POSTS

~~MANUFACTURED TERMINAL SECTION (FLARED)~~
~~STA 205+45.0 TO 205+82.5 RT~~
~~STA 206+95.0 TO 207+32.5 RT~~
~~STA 208+00.0 TO 208+37.5 RT~~
~~STA 209+62.5 TO 210+00.0 RT~~
~~STA 212+64.0 TO 213+01.5 RT~~

~~STA 212+64.0 TO 213+01.5 RT~~
~~NEW MANUFACTURED TERMINAL~~
~~SECTION (FLARED)~~

STA 205+45.0 TO 207+30.0 RT (185')
 REMOVAL AND DISPOSAL OF GUARDRAIL
 205+68 ~ 206+05.5 RT
~~STA 205+45.0 TO 205+82.5 RT~~
 NEW MANUFACTURED TERMINAL
 SECTION (FLARED)
 206+05.5 ~ 207+18 RT
~~STA 205+82.5 TO 206+95.0 RT (112.5')~~
 STEEL BEAM GUARDRAIL
 207+18 ~ 207+55.5 RT
~~STA 206+95.0 TO 207+32.5 RT~~
 NEW MANUFACTURED TERMINAL
 SECTION (FLARED)
 STA 207+36 RT (1)
 REMOVAL AND DISPOSAL OF GUIDE POST

STA 208+00 TO 209+95 RT (13)
 REMOVAL AND DISPOSAL OF GUIDE POSTS
 208+16 ~ 208+66 RT
~~STA 208+00.0 TO 208+37.5 RT~~
 NEW MANUFACTURED TERMINAL
 SECTION (FLARED)
~~STA 208+37.5 TO 209+62.5 RT (125')~~
 STEEL BEAM GUARDRAIL WITH 8' POSTS
~~STA 209+62.5 TO 210+00.0 RT~~
 NEW MANUFACTURED TERMINAL
 SECTION (FLARED)



INSTALLED NEW 15" x 35' CSP
 DRIVE CULVERT

208+66 ~ 213+0 RT
 STEEL BEAM GUARDRAIL WITH
 8' POSTS, COMBINED TWO DESIGN
 RUNS.

CURVE # 21
 Δ 45° LT
 R=966'
 D=6° 00'
 T=400'
 L=750'
 BANKING 0.077 FT/FT
 180' RUNOFF (50 MPH)
 SEE SHEET 50 FOR
 BANKING DETAIL

ADDED WHITE
 EDGE LINES
 AS SHOWN

ADDED 10' OF 18" CSP
 TO EXISTING CULVERT

PROJECT LAYOUT SHEET #22	DESIGNED BY	LFW	DATE	6/04
	DRAWN BY	LFW	DATE	6/04
	DESIGN FILE NO.	pave/99cl92/99cl92.dgn		
	PRF FILE	99cl92p22.1	DATE PLOTTED	12-MAR-2007 11:3
	PROJ. NAME	MORGAN		
PROJ. NO.	AC STP 2220(1)S			
SHEET	29	OF	61	SHEETS