

TEMPORARY AND DURABLE 4" WHITE LINE
 STA 197+00 TO 205+00 SOLID RT AND LT

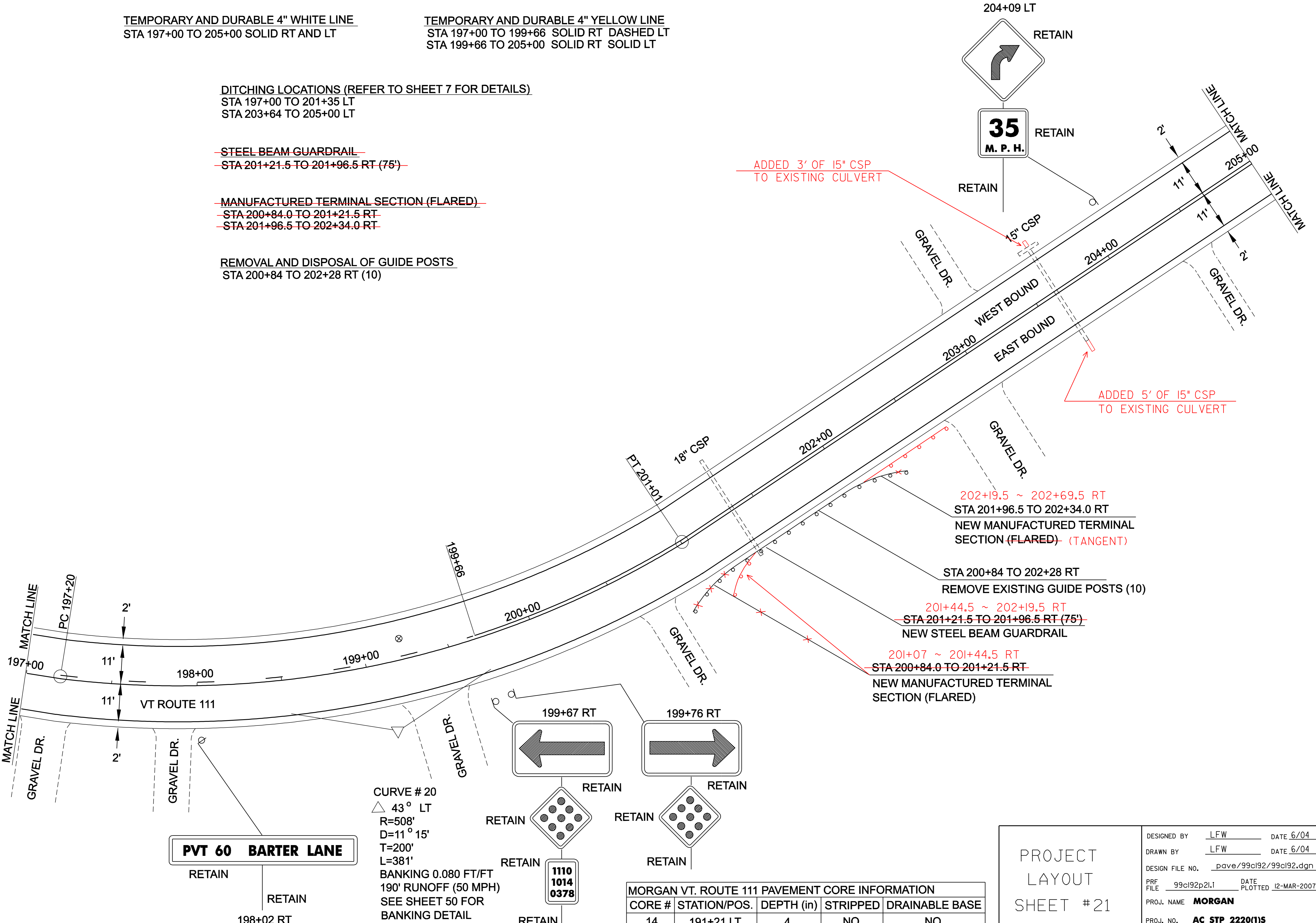
TEMPORARY AND DURABLE 4" YELLOW LINE
 STA 197+00 TO 199+66 SOLID RT DASHED LT
 STA 199+66 TO 205+00 SOLID RT SOLID LT

DITCHING LOCATIONS (REFER TO SHEET 7 FOR DETAILS)
 STA 197+00 TO 201+35 LT
 STA 203+64 TO 205+00 LT

~~STEEL BEAM GUARDRAIL~~
~~STA 201+21.5 TO 201+96.5 RT (75')~~

~~MANUFACTURED TERMINAL SECTION (FLARED)~~
~~STA 200+84.0 TO 201+21.5 RT~~
~~STA 201+96.5 TO 202+34.0 RT~~

REMOVAL AND DISPOSAL OF GUIDE POSTS
 STA 200+84 TO 202+28 RT (10)



PVT 60 BARTER LANE

CURVE # 20
 $\Delta 43^\circ$ LT
 $R=508'$
 $D=11^\circ 15'$
 $T=200'$
 $L=381'$
 BANKING 0.080 FT/FT
 190' RUNOFF (50 MPH)
 SEE SHEET 50 FOR
 BANKING DETAIL

MORGAN VT. ROUTE 111 PAVEMENT CORE INFORMATION				
CORE #	STATION/POS.	DEPTH (in)	STRIPPED	DRAINABLE BASE
14	191+21 LT	4	NO	NO

PROJECT
 LAYOUT
 SHEET #21

DESIGNED BY	LFW	DATE	6/04
DRAWN BY	LFW	DATE	6/04
DESIGN FILE NO.	pave/99cl92/99cl92.dgn		
PRF FILE	99cl92p21.1	DATE PLOTTED	12-MAR-2007 11:3
PROJ. NAME	MORGAN		
PROJ. NO.	AC STP 2220(1)S		
SHEET	28	OF	61 SHEETS