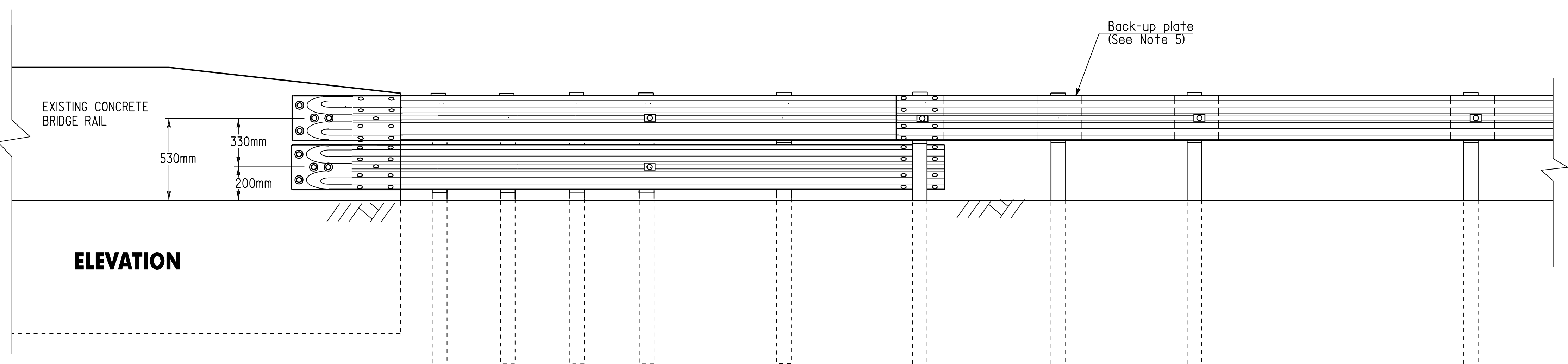
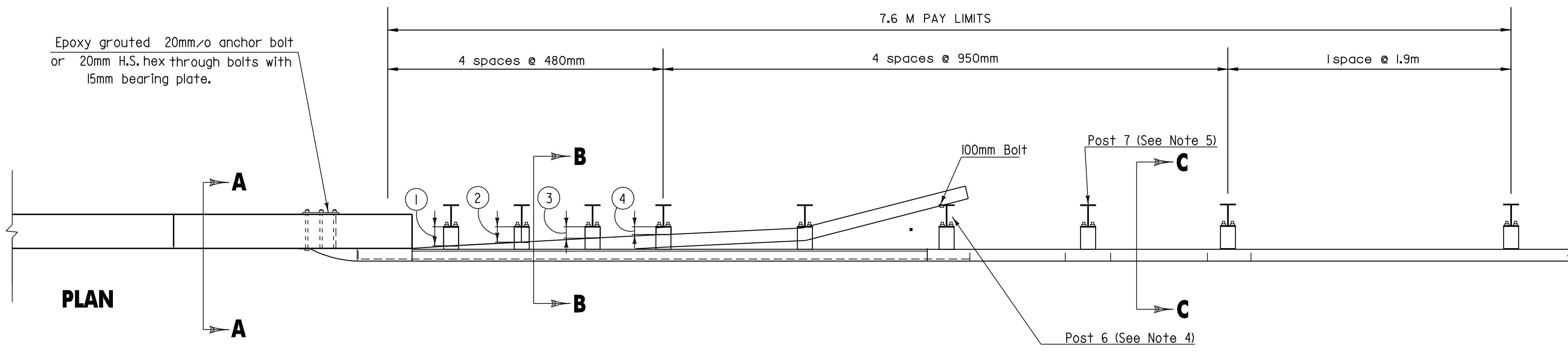
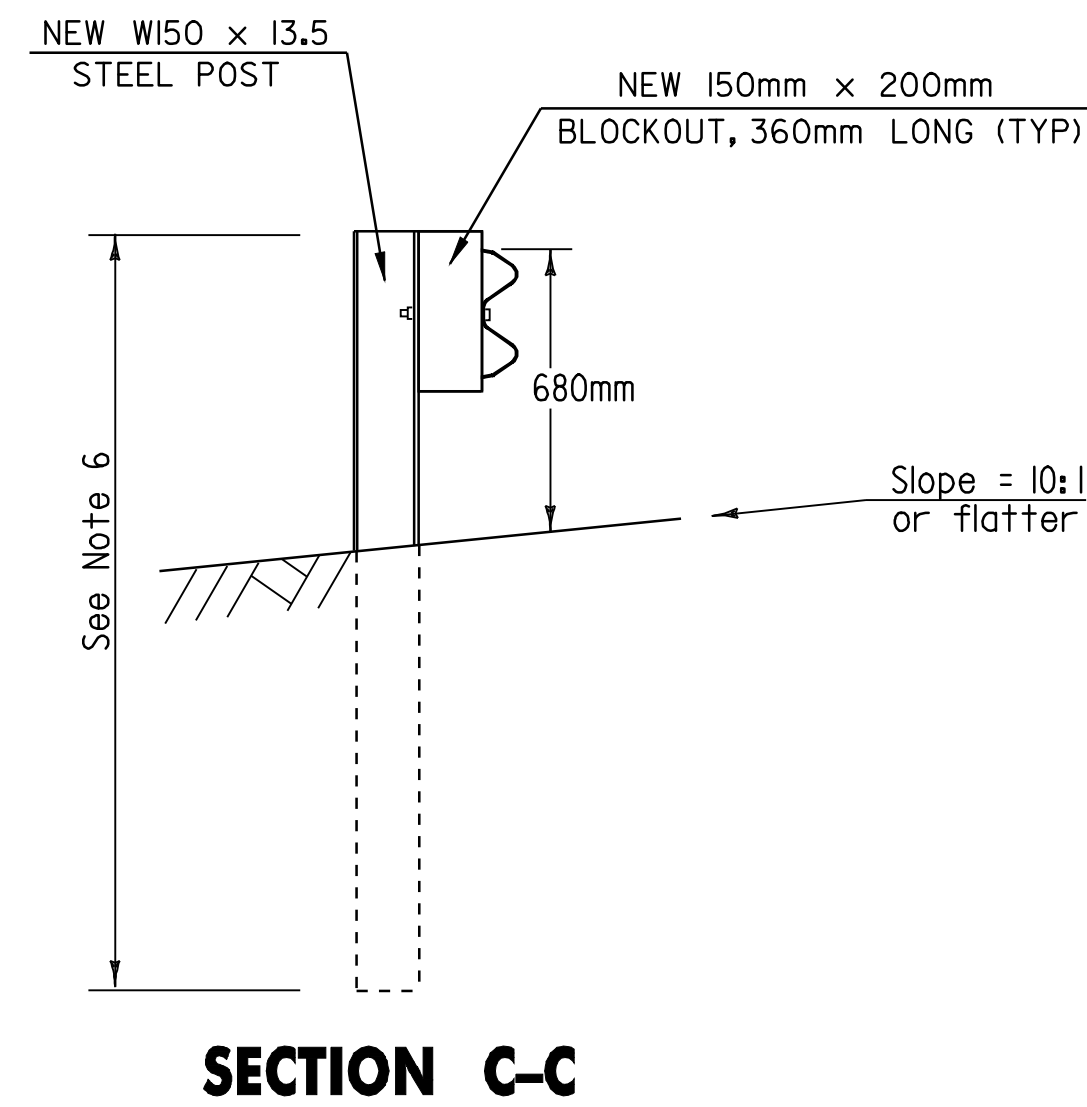
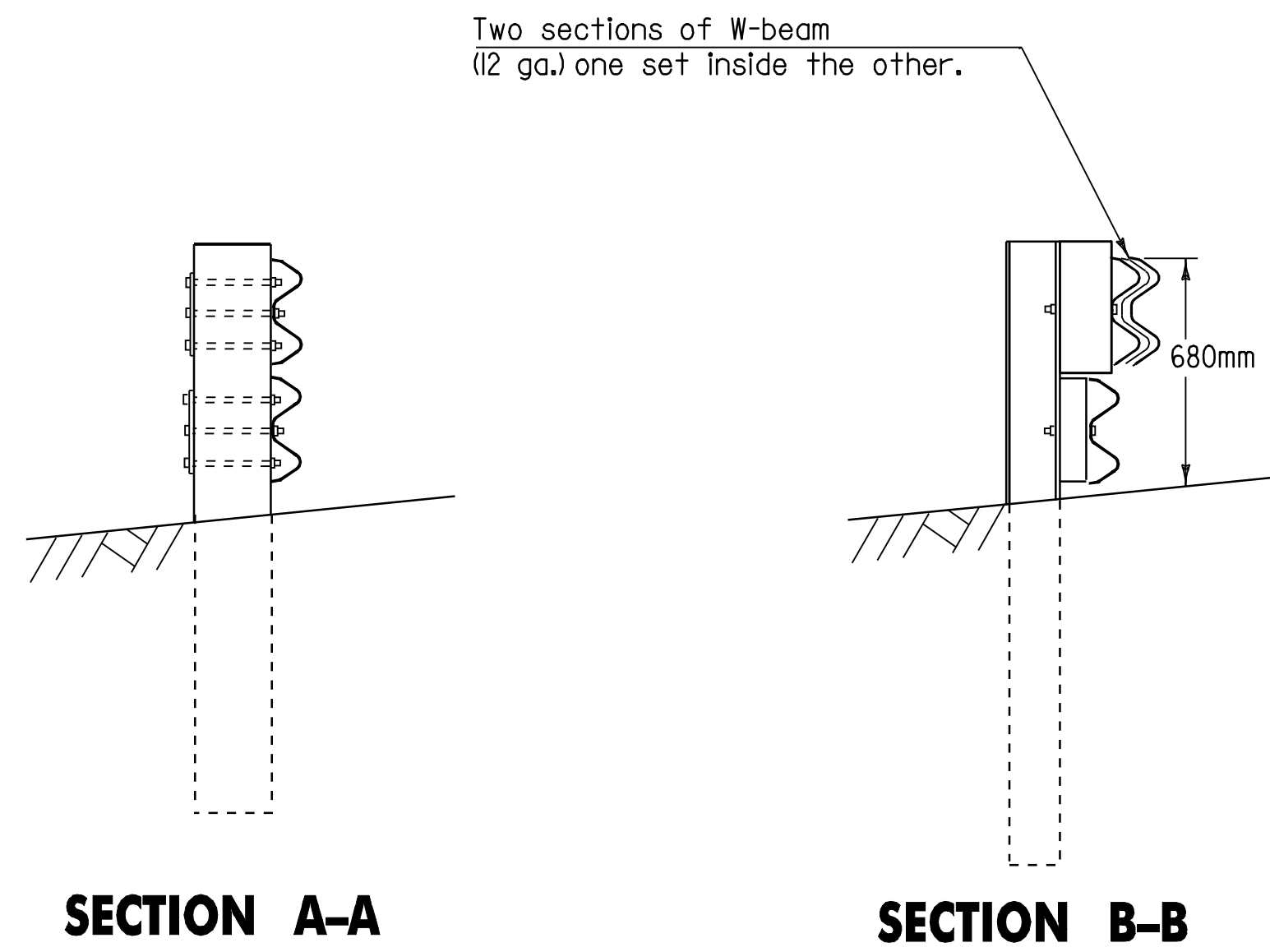


NOTES

1. This guardrail transition is for connection to a vertical concrete bridge rail and should not be connected directly to a concrete safety shape.
2. Bottom beam blocks are offset drilled to sit squarely on the post flange. Blocks are attached with 15mm carriage bolts.
3. The rubrail may be shop bent in the last 3 feet to facilitate installation.
4. Posts 1,2,3,4 and 6 require an additional hole to attach lower blocks and or lower beam.
5. At post 7, back-up plate bolted to block only.
6. Posts will be either 1.8m or 2.4m steel posts, as directed by the Engineer.



No Scale



<p>TERMINAL CONNECTOR FOR STEEL BEAM GUARD RAIL W/STEEL POSTS BRIDGE NO. 17</p>	DESIGNED BY	KML	DATE	01-04
	DRAWN BY	KML	DATE	01-04
	DESIGN FILE NO.	pave/99cl88/99cl88.dgn		
	PROJ. NAME	CAMBRIDGE		
	PROJ. NO.	STP 2218(1)S		
SHEET 26	OF	28	SHEETS	