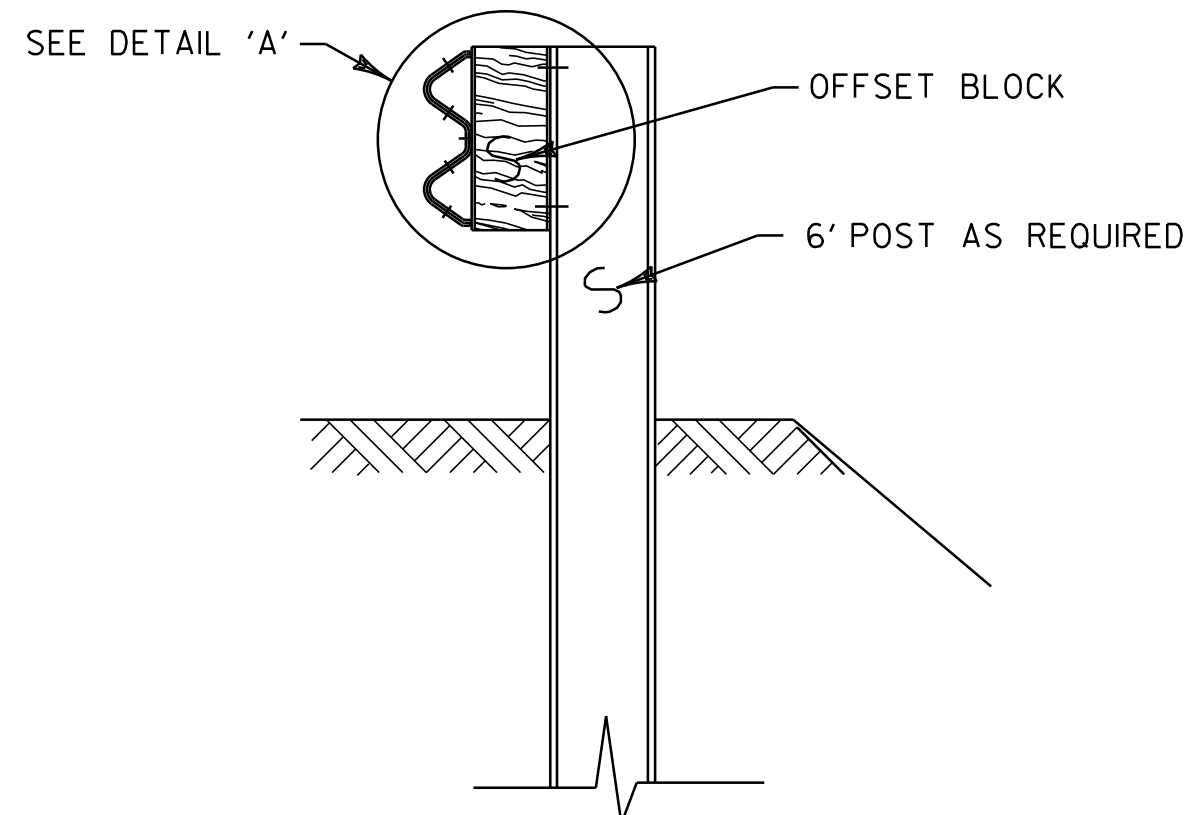
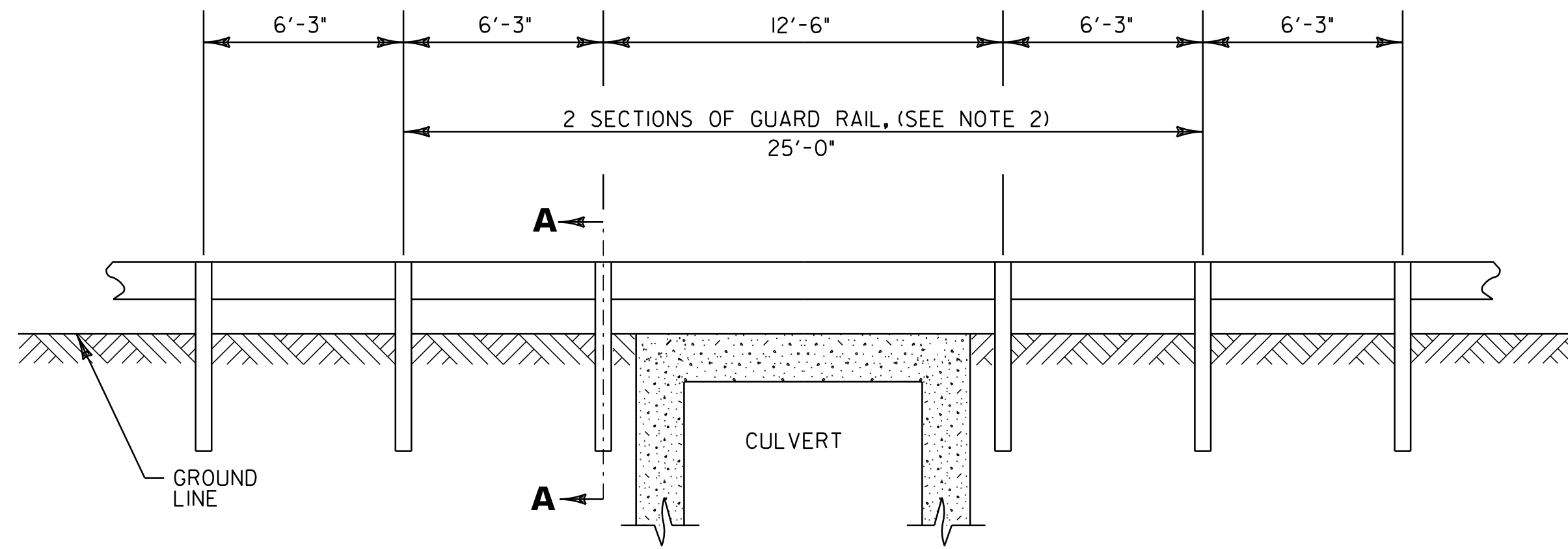


DETAIL A



SECTION A-A

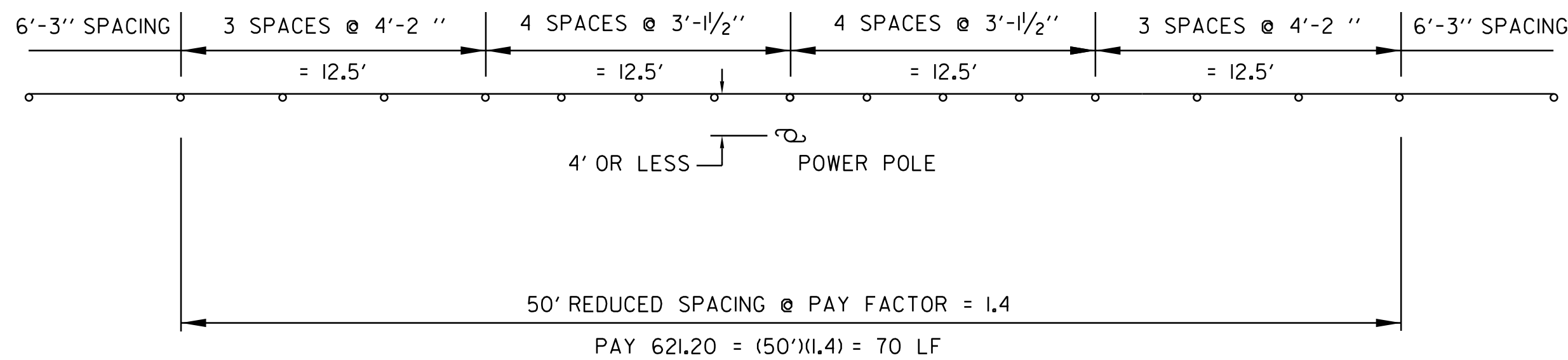


DETAIL OF STEEL BEAM GUARD RAIL AT LARGE CULVERTS

FAIRFAX MM 9.781LT & RT (BRIDGE #14)
ST. ALBANS TOWN MM 0.953 LT & RT (BRIDGE #17)

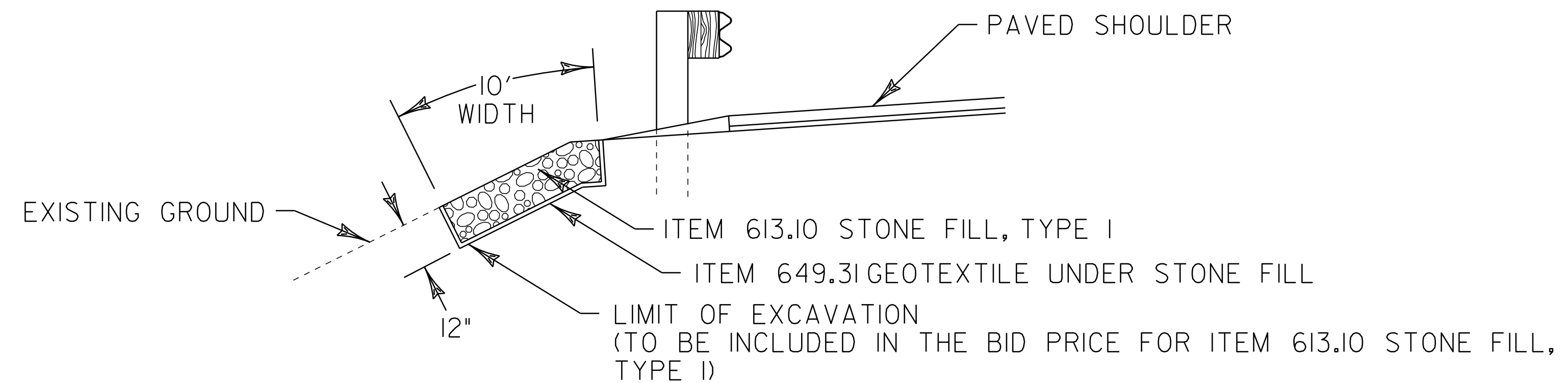
NOTES:

1. SEE VAOT STANDARDS G-1 & G-1d FOR STEEL BEAM GUARD RAIL DETAILS
2. THIS WORK SHALL BE PAID UNDER ITEM 621.206, STEEL BEAM GUARDRAIL, GALVANIZED/NESTED.
3. THIS DETAIL TO BE USED AS INDICATED ON THE ITEM DETAIL SUMMARY SHEET OR AS DIRECTED BY THE RESIDENT ENGINEER.



REDUCED STEEL BEAM GUARDRAIL POST SPACING DETAIL

OBJECTS WITHIN 4.0' OF GUARDRAIL (N.T.S.)
FAIRFAX MM 9.750 LT UTILITY POLE
FAIRFAX MM 13.050 LT UTILITY POLE



SLOPE EROSION REPAIR DETAIL

FAIRFAX MM 13.050 LT

NOT TO SCALE

GUARDRAIL AND MISCELLANEOUS DETAIL SHEET

PROJECT NAME: FAIRFAX - ST. ALBANS TOWN
PROJECT NUMBER: STP 2217(1)

FILE NAME: p99cl86.dgn
PROJECT LEADER: T. DOMEY
DESIGNED BY: K. LOCKE
IPARM FILE NAME: p99cl86gds.i

PLOT DATE: 11-OCT-2011 11:49
DRAWN BY: K. LOCKE
CHECKED BY: PAVT MGMT
SHEET 19 OF 25