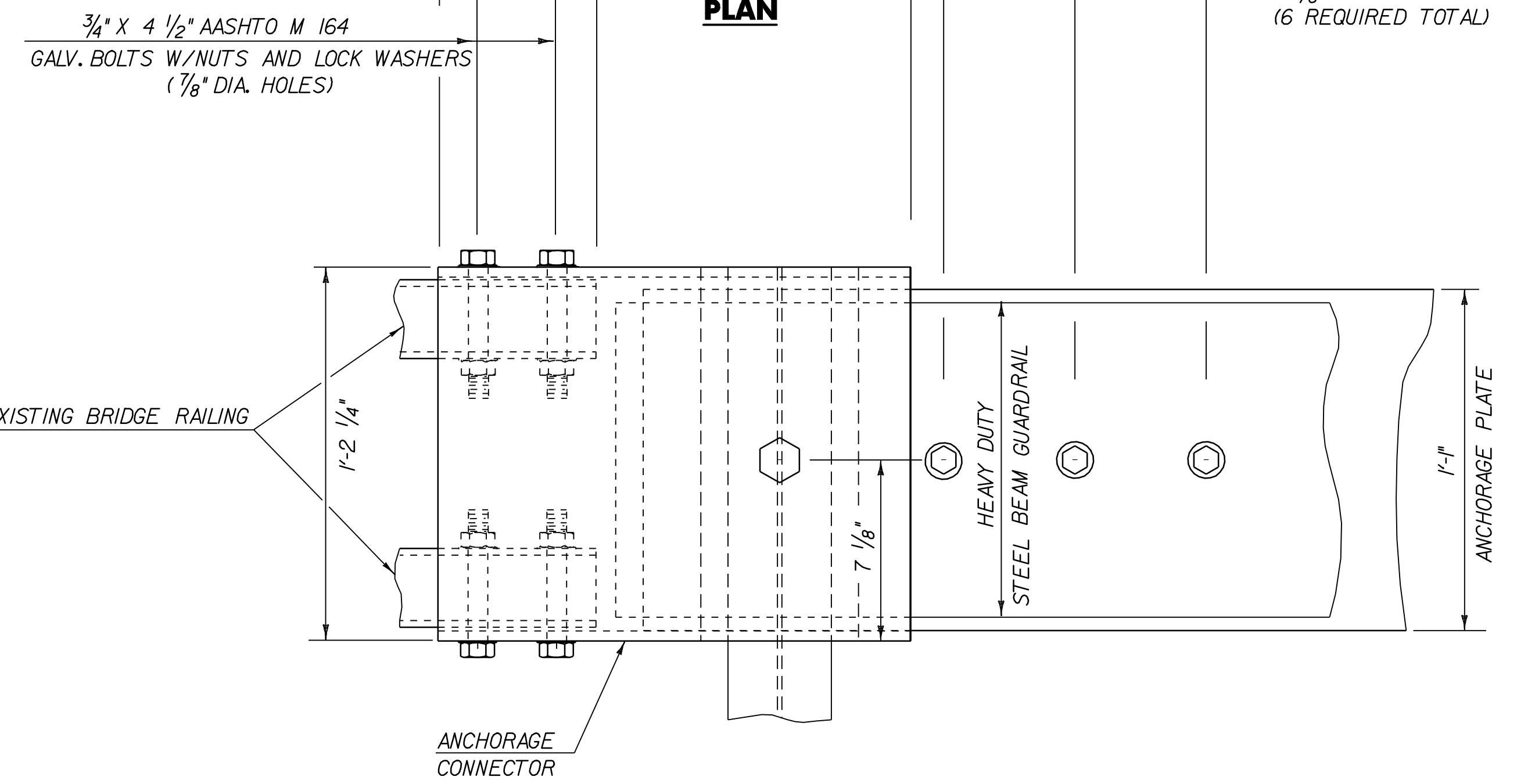
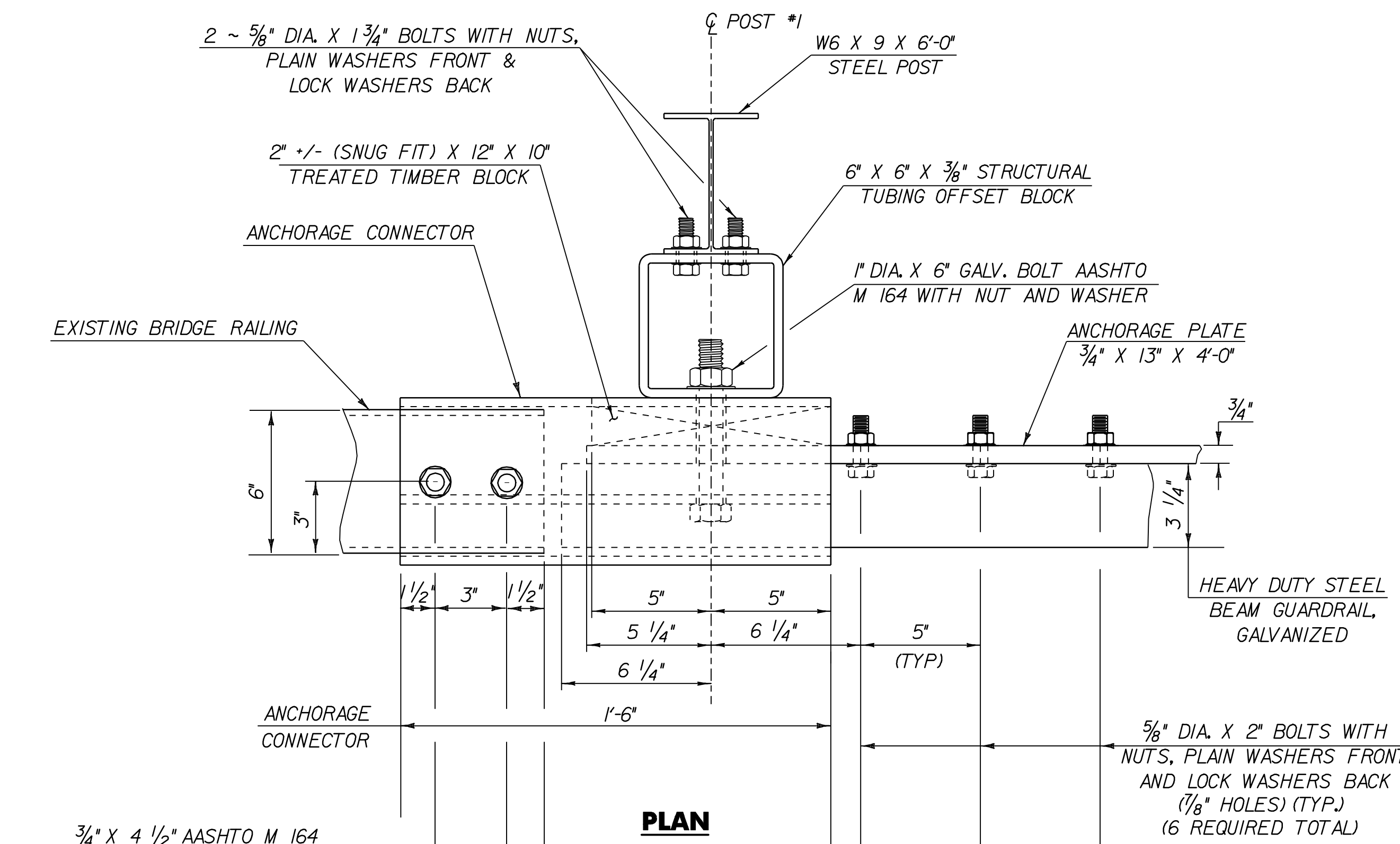
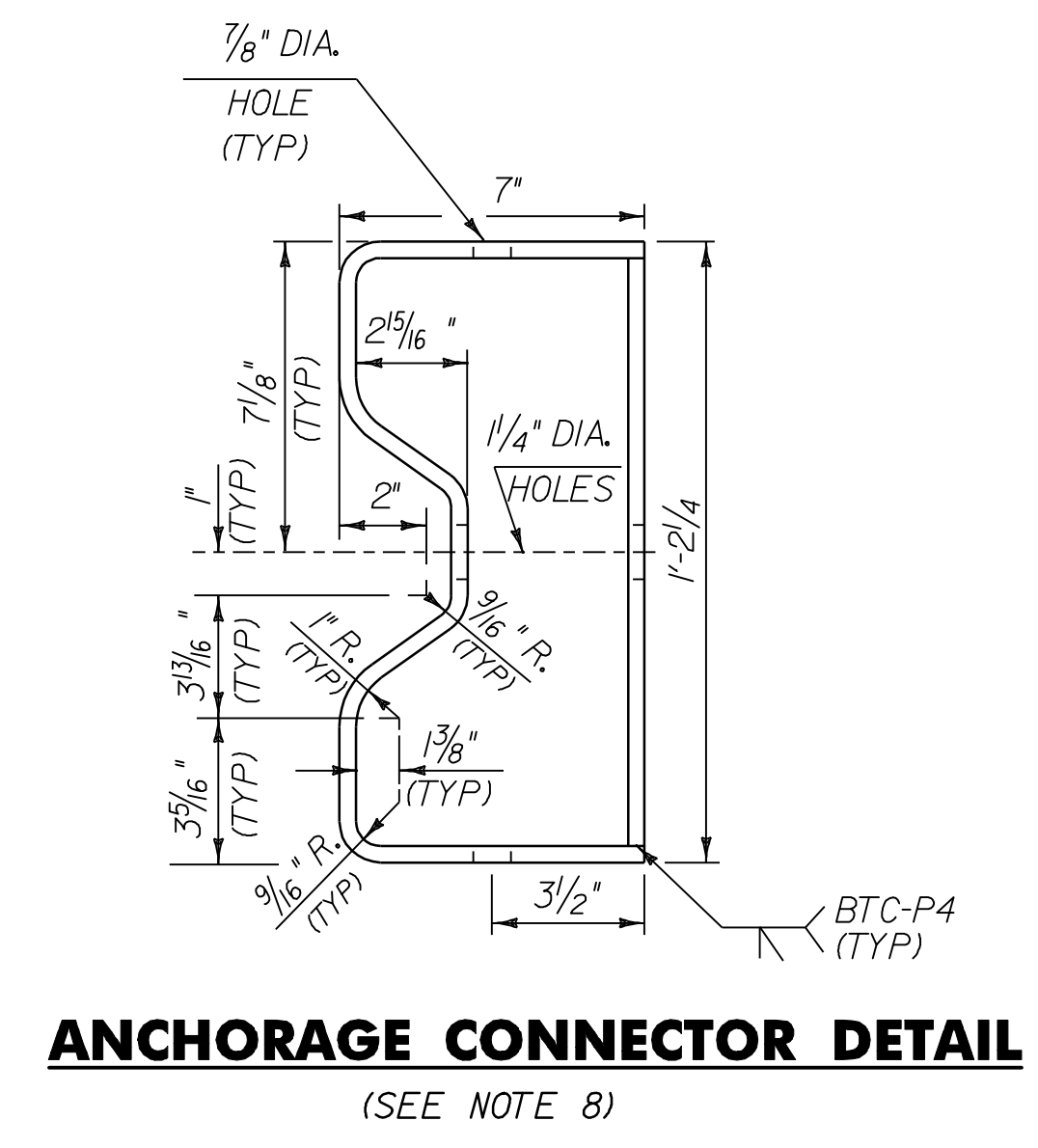


**APPROACH RAIL NOTES:**

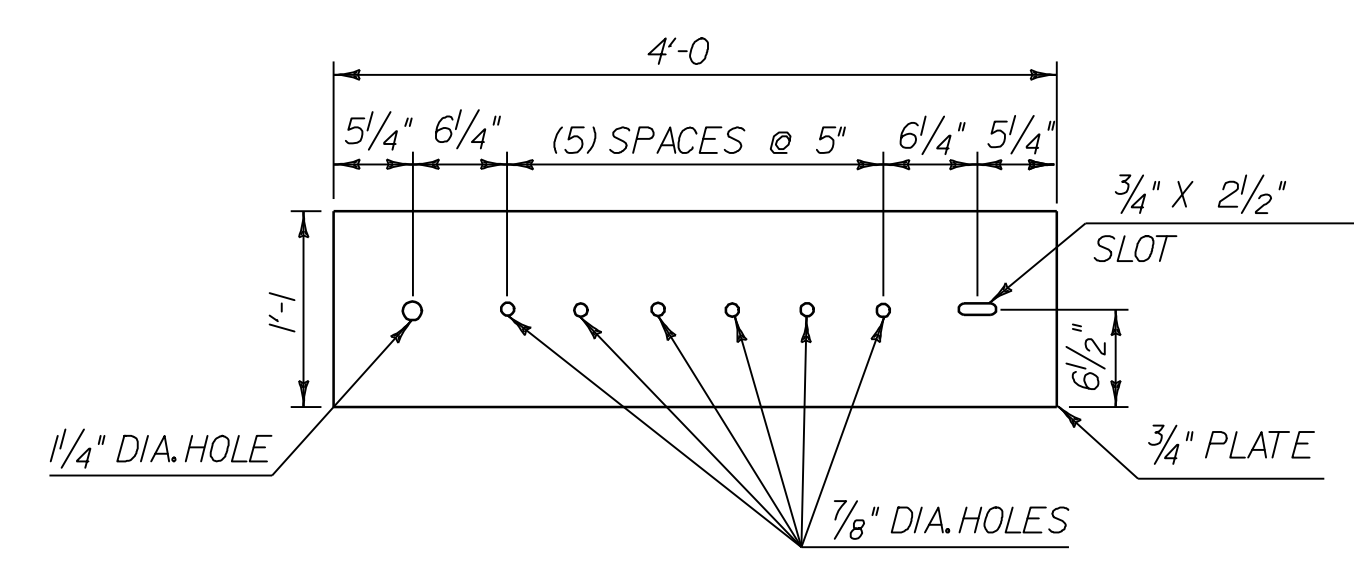
1. REFER TO STANDARD G-1 FOR ADDITIONAL RAIL DETAILS.
2. ALL POSTS FOR HEAVY DUTY STEEL BEAM GUARD RAIL SHALL BE STEEL, IN ACCORDANCE WITH SECTION 728 "GUARD RAIL, GUIDE POSTS AND BARRIERS" UNLESS OTHERWISE SPECIFIED IN THE CONTRACT.
3. APPROACH RAIL SPLICES SHALL LAP IN DIRECTION OF TRAFFIC FLOW.
4. ANCHORAGE CONNECTOR AND ANCHORAGE PLATE SHALL BE AASHTO M 270, GRADE 250 GALVANIZED TO AASHTO M III AFTER FABRICATION.
5. ALL BOLTS, NUTS AND WASHERS SHALL BE AASHTO M 164 GALVANIZED TO AASHTO M 232 AFTER FABRICATION.
6. STRUCTURAL TUBING OFFSET BLOCK SHALL BE AASHTO M 183 GALVANIZED TO AASHTO M III AFTER FABRICATION.
7. APPROACH RAILING SHALL BE HEAVY DUTY STEEL BEAM FOR 50'-0" FROM THE CL OF POST #1 FOR TYPE I AND 12'-6" FROM THE CL OF POST #1 FOR TYPE II.
8. ALLOWABLE DIMENSIONAL TOLERANCE FOR BENT SECTIONS IS +/- 1/16 OF AN INCH.
9. THE UNIT PRICES BID FOR EITHER TYPE OF GUARD RAIL APPROACH SECTION SHALL INCLUDE ANCHORAGE CONNECTOR, ANCHORAGE PLATE, HEAVY DUTY STEEL BEAM GUARD RAIL, POSTS, OFFSET BLOCKS, BLOCKING, BOLTS, AND ALL NECESSARY HARDWARE.



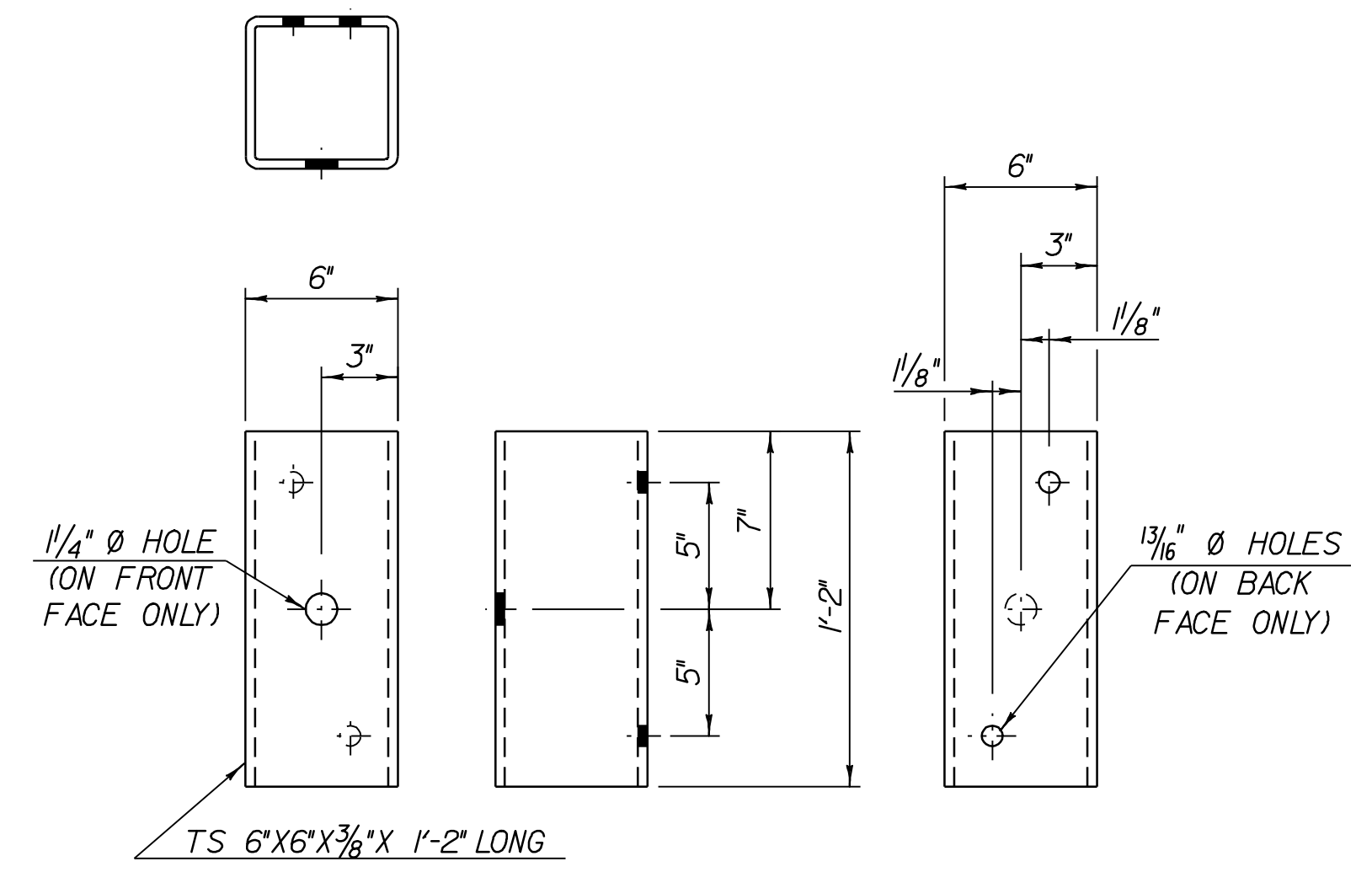
**ELEVATION**  
**CONNECTION/TRANSITION DETAILS AT POST NO. 1**



**ANCHORAGE CONNECTOR DETAIL**  
(SEE NOTE 8)



**ANCHOR PLATE DETAIL**



**STRUCTURAL TUBING OFFSET BLOCK DETAILS**  
(OCCURS AT POST #1 WHEN USING APPROACH RAIL UTILIZING STEEL POSTS.)

**GUARDRAIL APPROACH SECTION DETAIL SHEET #2**

DETAILS ARE NOT TO SCALE

DESIGNED BY	DATE 9-07
DRAWN BY	DATE 9-07
DESIGN FILE NO. p99cl82.dgn	
PRF FILE p99cl82gasd2.1	DATE PLOTTED 08-JAN-2009 08
PROJ. NAME	JOHNSON - HYDE PARK
PROJ. NO.	STP 2215(1)S
SHEET 32	OF 33 SHEETS