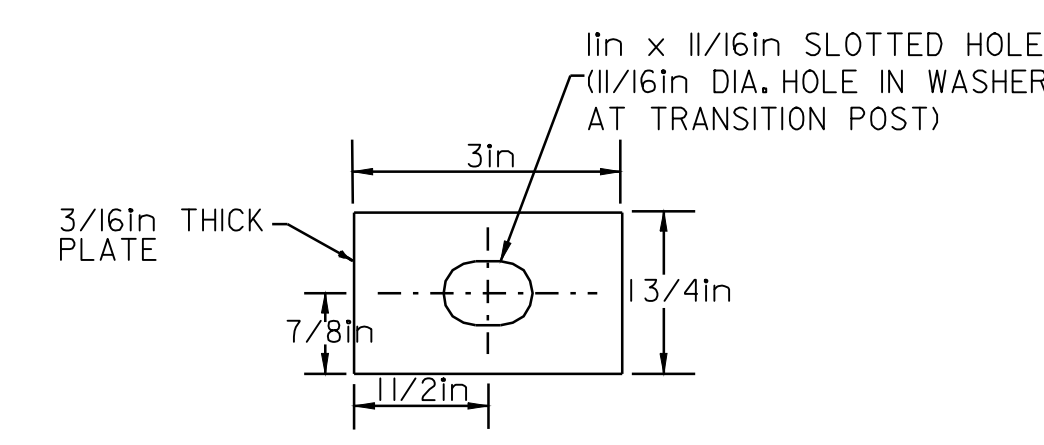
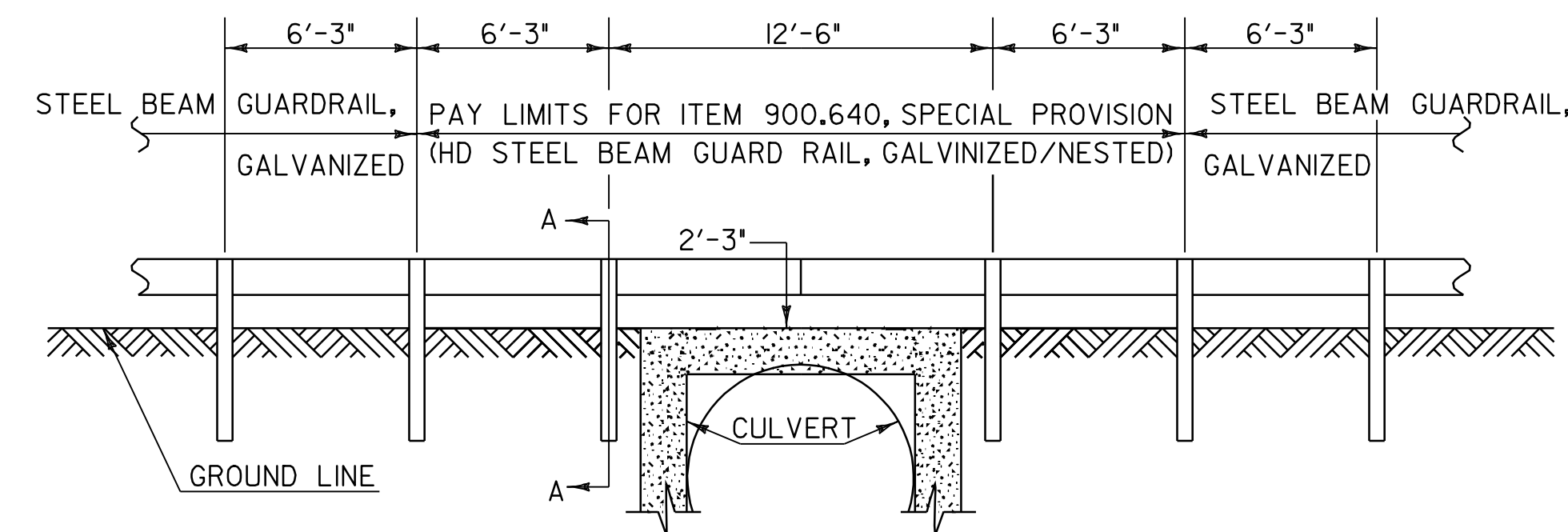


POST DETAIL



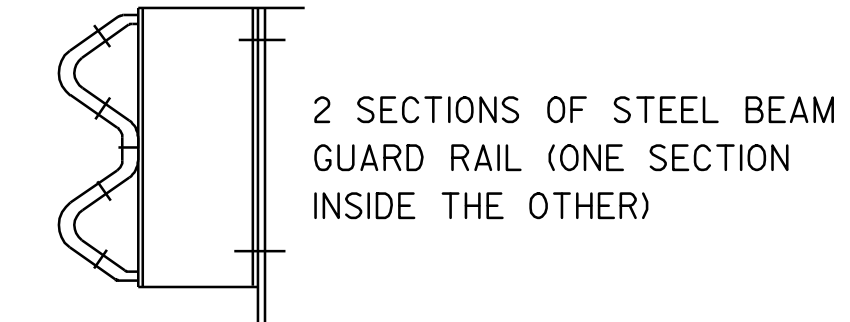
SPECIAL WASHER DETAIL

(MATERIAL SHALL MEET AASHTO M270M/M270 GRADE 50)

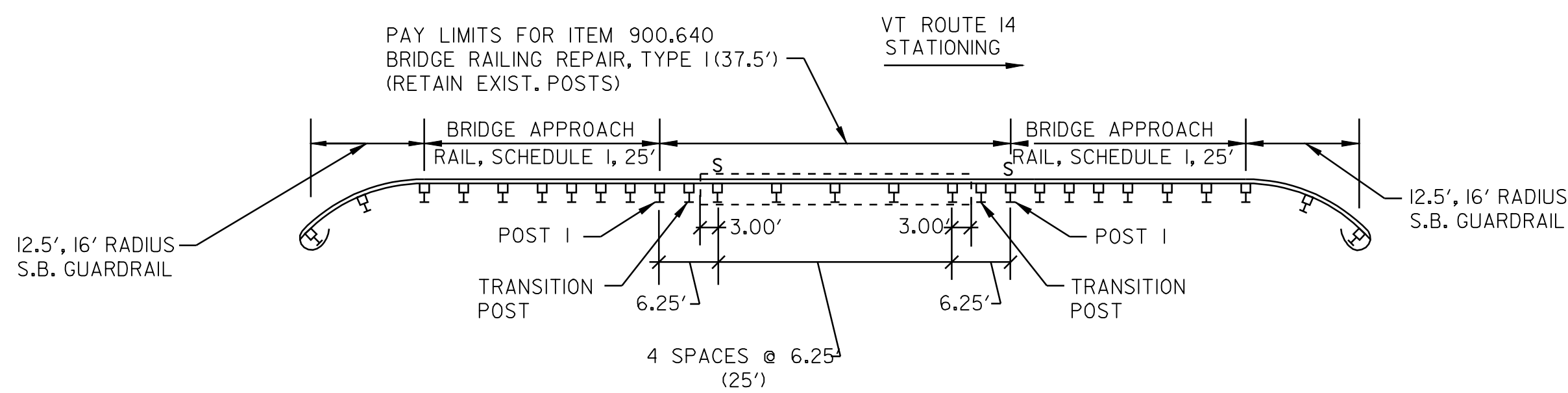


DETAIL OF STEEL BEAM GUARD RAIL AT SMALL CULVERTS

WILLIAMSTOWN BARRE TOWN
 STA. 340+11RT STA. 37+61LT
 STA. 340+11LT

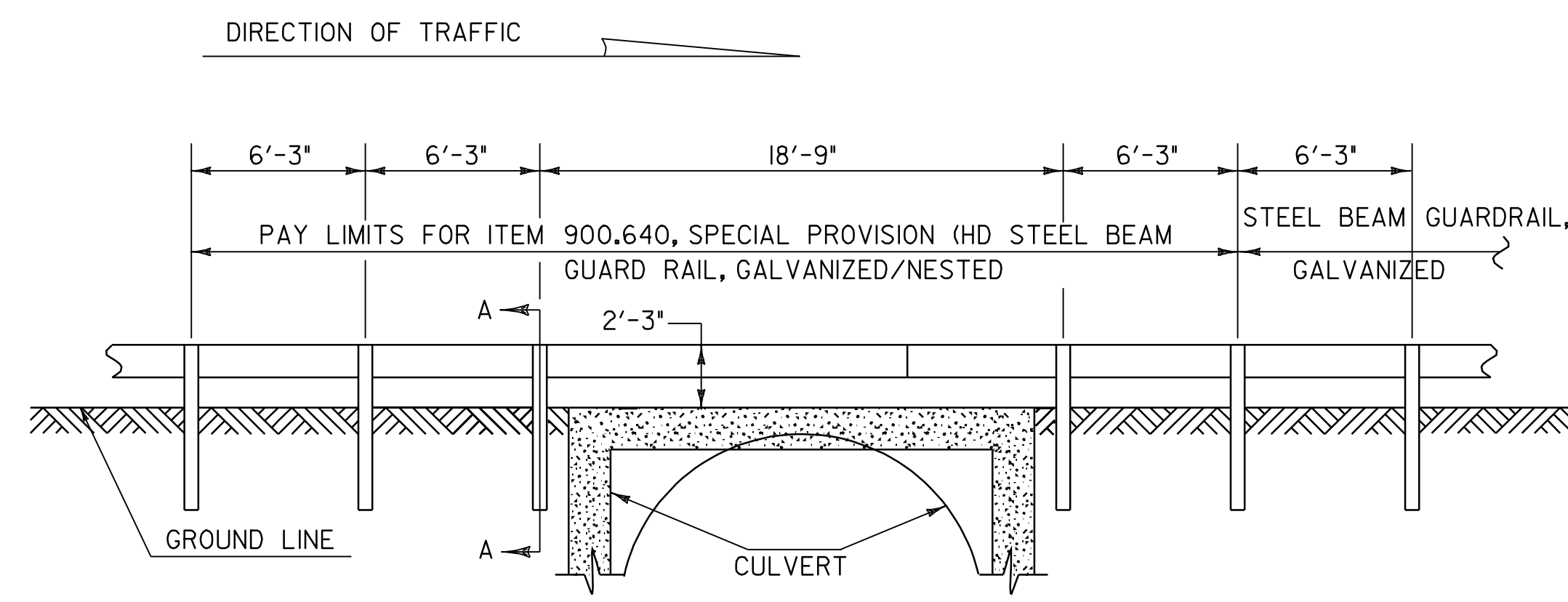


DETAIL A



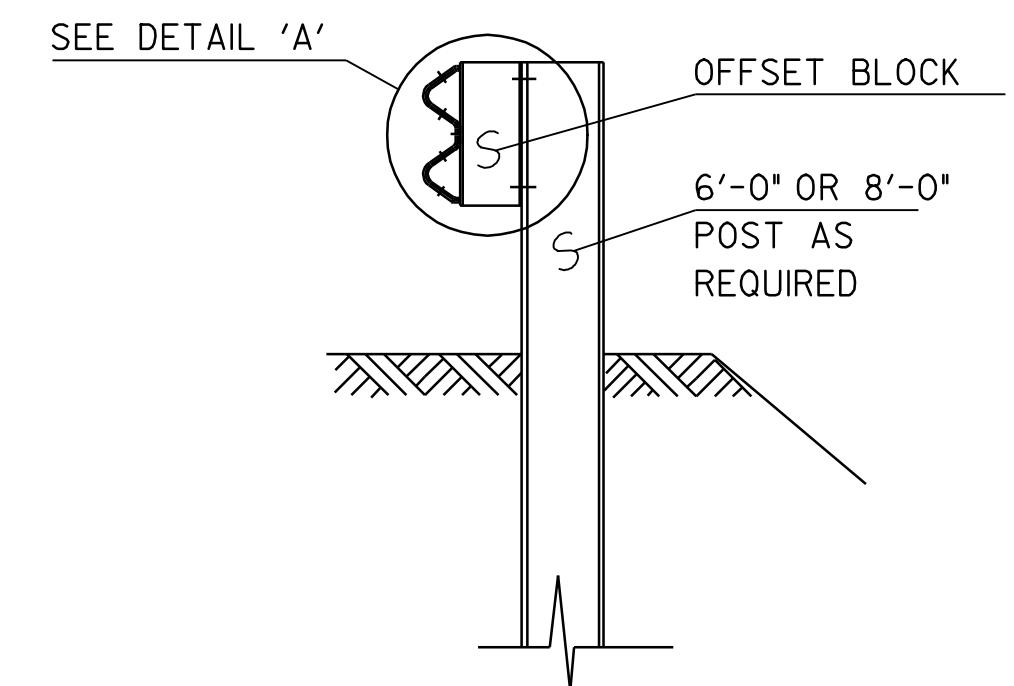
BARRE TOWN - CULVERT

FIELD STA. 57+91 - MM 1.097

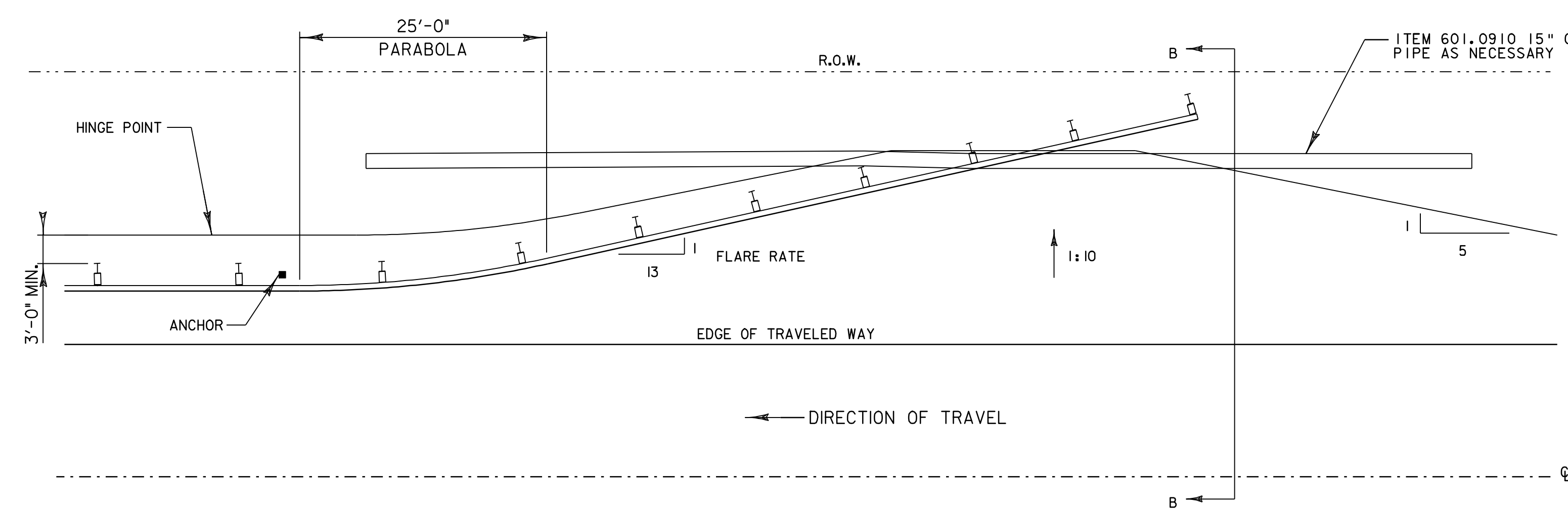


DETAIL OF STEEL BEAM GUARD RAIL AT LARGE CULVERTS

BARRE TOWN
 STA. 37+67 RT



SECTION A-A

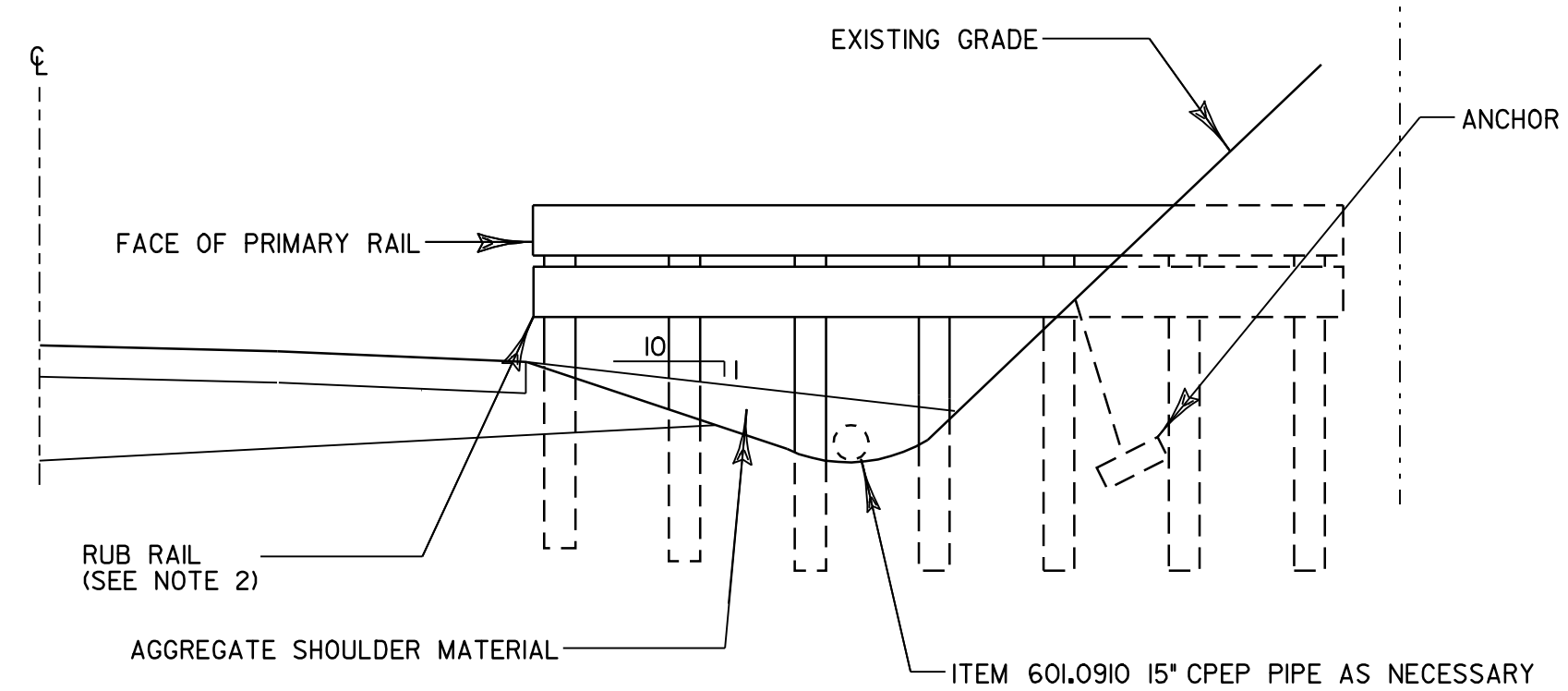


DETAIL FOR BURIED GUARDRAIL ENDS INTO BACKSLOPE WITH RUBRAIL

NOT TO SCALE
 WILLIAMSTOWN
 STA. 281+11RT
 STA. 283+20 LT

NOTES:

1. PRIMARY RAIL SHALL REMAIN AT A CONSTANT HEIGHT (LEVEL) RELATIVE TO THE HEIGHT OF RAIL AT THE EDGE OF SHOULDER.
2. ADDITION OF RUB RAIL IS REQUIRED WHEN OPENING BENEATH PRIMARY RAIL EXCEEDS 18 INCHES. RUB RAIL EXTENDS FROM THE EDGE OF SHOULDER TO THE BACK SLOPE.
3. TRENCHING AND BACKFILLING ASSOCIATED WITH INSTALLING 15\"/>



SECTION B-B

NOT TO SCALE

**GUARDRAIL
 DETAIL SHEET**

DETAILS ARE NOT TO SCALE

PROJECT NAME: WILLIAMSTOWN-BARRE TOWN
 PROJECT NUMBER: STP 2210 (1)S

FILE NAME: p99cl72.dgn
 PROJECT LEADER: EPD
 DESIGNED BY: CDL
 PLOT FILE: p99cl72gds.1

PLOT DATE: 29-APR-2009 13:3
 DRAWN BY: RHB
 CHECKED BY: EPD
 SHEET 5 OF 32