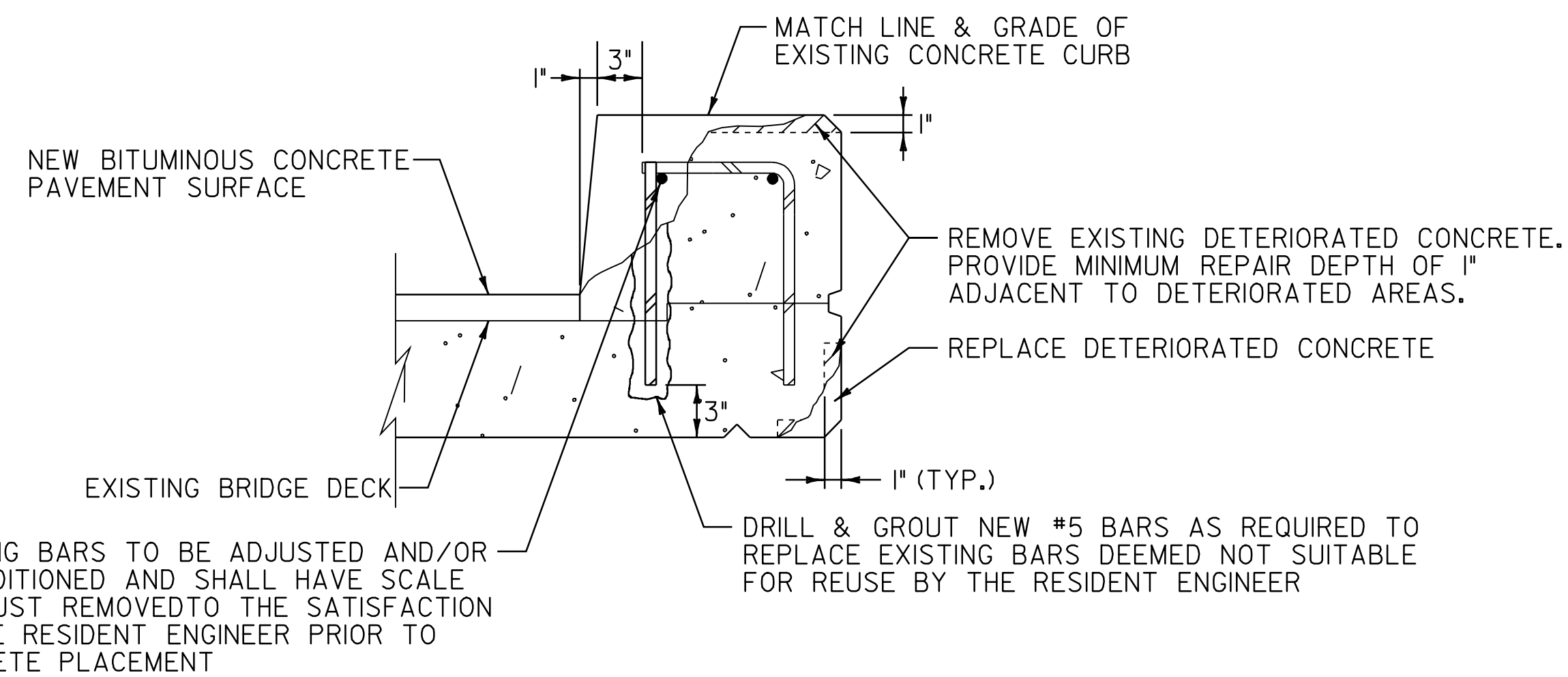
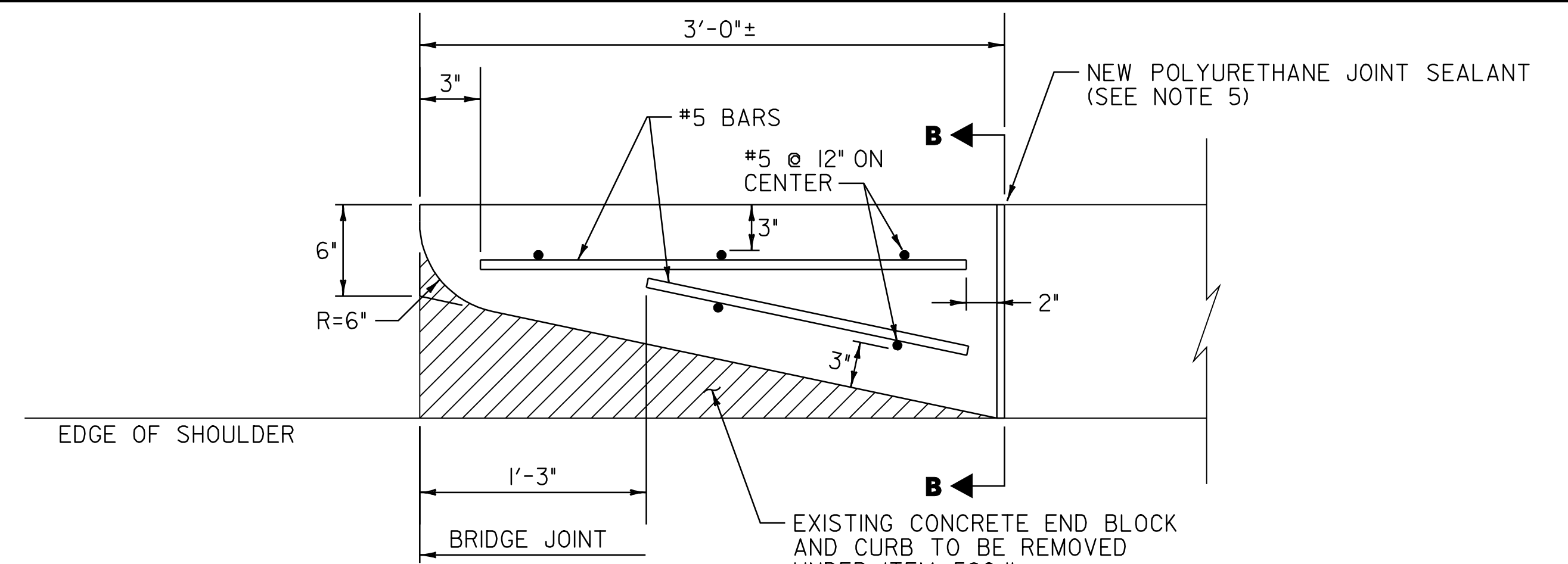


ELEVATION



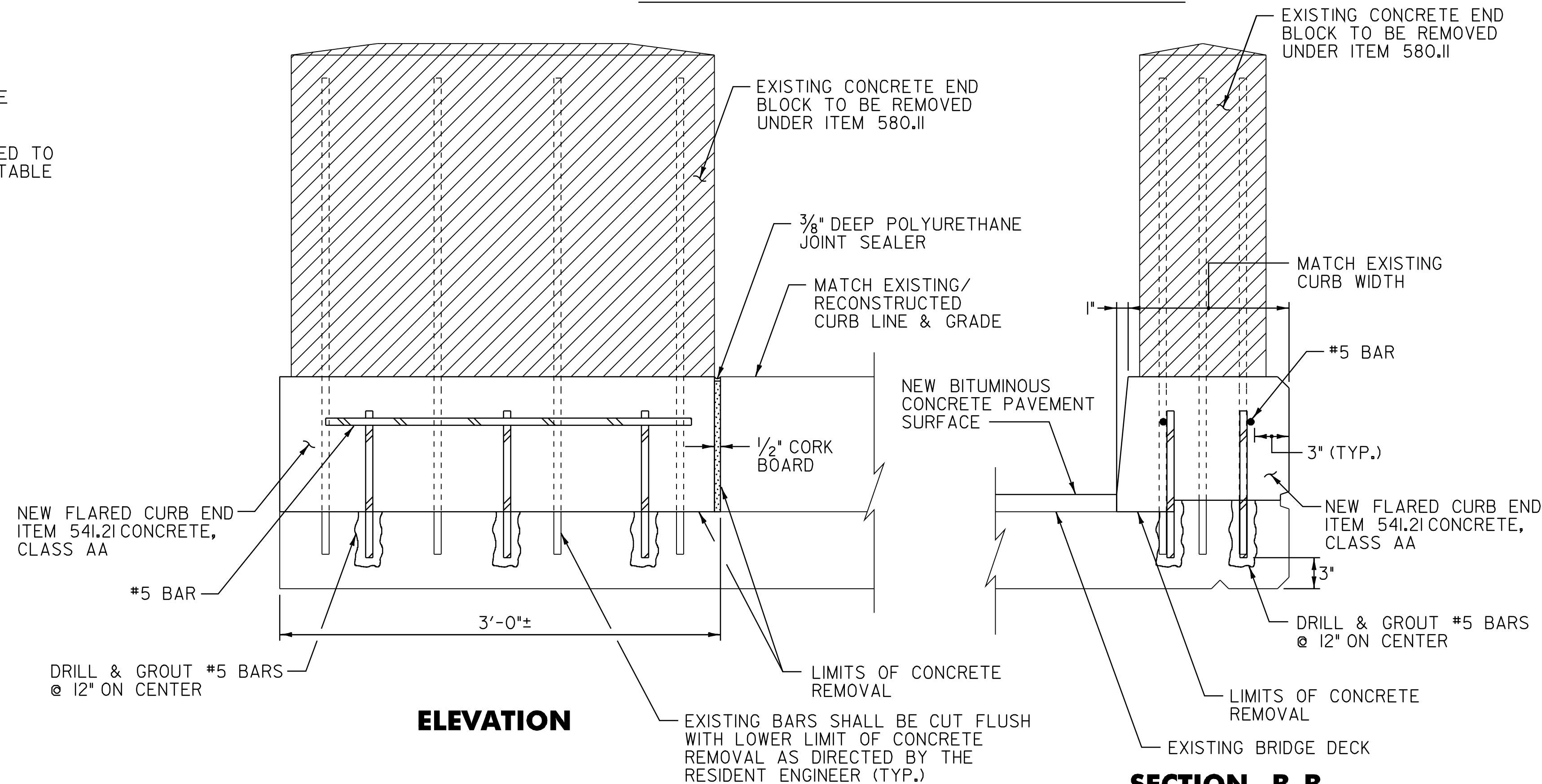
SECTION A-A

CURB REPAIR DETAIL



PLAN

NEW FLARED CURB END TREATMENT



ELEVATION

NEW FLARED CURB END TREATMENT

SECTION B-B

NOTES

1. ALL CONCRETE SHALL BE CLASS AA OR AS DIRECTED BY THE RESIDENT ENGINEER.
2. CRACKS OR SPALLED AREAS IN THE CURBS OR FASCIAS WITH A DEPTH OF LESS THAN ONE INCH SHALL BE FILLED WITH EPOXY MORTAR. COSTS ASSOCIATED WITH THE EPOXY MORTAR SHALL BE INCLUDED IN THE BID PRICE FOR ITEM 580.II REPAIR OF CONCRETE SUPERSTRUCTURE, CLASS II. DETERIORATED OR SPALLED AREAS IN THE CURBS OR FASCIAS WITH A DEPTH GREATER THAN ONE INCH SHALL HAVE THEIR EDGES CUT TO PROVIDE A MINIMUM DEPTH OF ONE INCH COATED WITH NEAT CEMENT, AND PATCHED WITH CONCRETE.
3. ALL DETERIORATED OR UNSOUND CONCRETE SHALL BE REMOVED TO THE LIMITS DEEMED NECESSARY BY THE RESIDENT ENGINEER.
4. REMOVAL OF CONCRETE CURB, END BLOCKS AND POSTS TO THE LIMITS SHOWN SHALL BE PAID FOR UNDER ITEM 580.II REPAIR OF CONCRETE SUPERSTRUCTURE, CLASS II. RUBBLE CREATED BY THIS REMOVAL SHALL BE REMOVED AND DISPOSED OF PROPERLY AS DIRECTED BY THE RESIDENT ENGINEER.
5. THE CONTRACTOR SHALL INSTALL POLYURETHANE JOINT SEALANT PER SECTION 524 OF THE VAOT 2006 STANDARD SPECIFICATIONS FOR CONSTRUCTION AND SHALL BE CONSIDERED INCIDENTAL TO ITEM 580.II AS DIRECTED BY THE RESIDENT ENGINEER.
6. EXISTING CONCRETE END BLOCK AND CURB TO BE REMOVED UNDER ITEM 580.II. NEW FLARED CURB INSTALLATION SHALL BE PAID FOR UNDER ITEM 541.21 CONCRETE, CLASS AA.

7. LOCATION OF EXISTING U-BARS IS NOT KNOWN. DRILL AND GROUT #5 DOWELS AS SHOWN IN DETAILS. WHEN DIRECTED BY THE RESIDENT ENGINEER, ANY EXISTING U-BARS SHALL BE REMOVED AND SUBSEQUENTLY REPLACED BY #5 DOWELS AS REQUIRED TO PROVIDE NECESSARY VERTICAL REINFORCEMENT. PAYMENT FOR ALL DRILLING AND GROUTING SHALL BE CONSIDERED INCIDENTAL TO ITEM 580.II. ALL GROUT MATERIAL MUST BE ON THE VAOT APPROVED PRODUCTS LIST.
8. MINIMUM COVER FOR REINFORCING STEEL SHALL BE THREE INCHES UNLESS OTHERWISE NOTED.
9. REINFORCING PLACEMENT TOLERANCES SHALL BE +/- 1" SPACING AND +/- 1/4" CLEARANCE.
10. ALL EXPOSED EDGES OF CONCRETE SHALL BE CHAMFERED 1" BY 1".
11. ITEM 900.625 SPECIAL PROVISION (WATER REPELLENT, SILANE) SHALL BE APPLIED TO ALL EXPOSED CONCRETE SURFACES (NEW AND EXISTING) EXCEPT THE UNDERSIDE OF DECK BETWEEN DRIP BEADS. THE CONTRACTOR SHALL POWER WASH ALL REPAIR AREAS PRIOR TO APPLYING THE WATER REPELLENT DIRECTED BY THE RESIDENT ENGINEER.

NOT TO SCALE

BRIDGE CURB REPAIR DETAIL SHEET

PROJECT NAME: MANCHESTER
PROJECT NUMBER: STP 2203(I)S

FILE NAME: p99cl58.dgn
PROJECT LEADER: D.E.G.
DESIGNED BY: M.J.M.
IPARM FILE: p99cl58cd.i

PLOT DATE: 09-MAY-2008
DRAWN BY: C.A.K.
CHECKED BY: D.W.E.
SHEET 65 OF 68