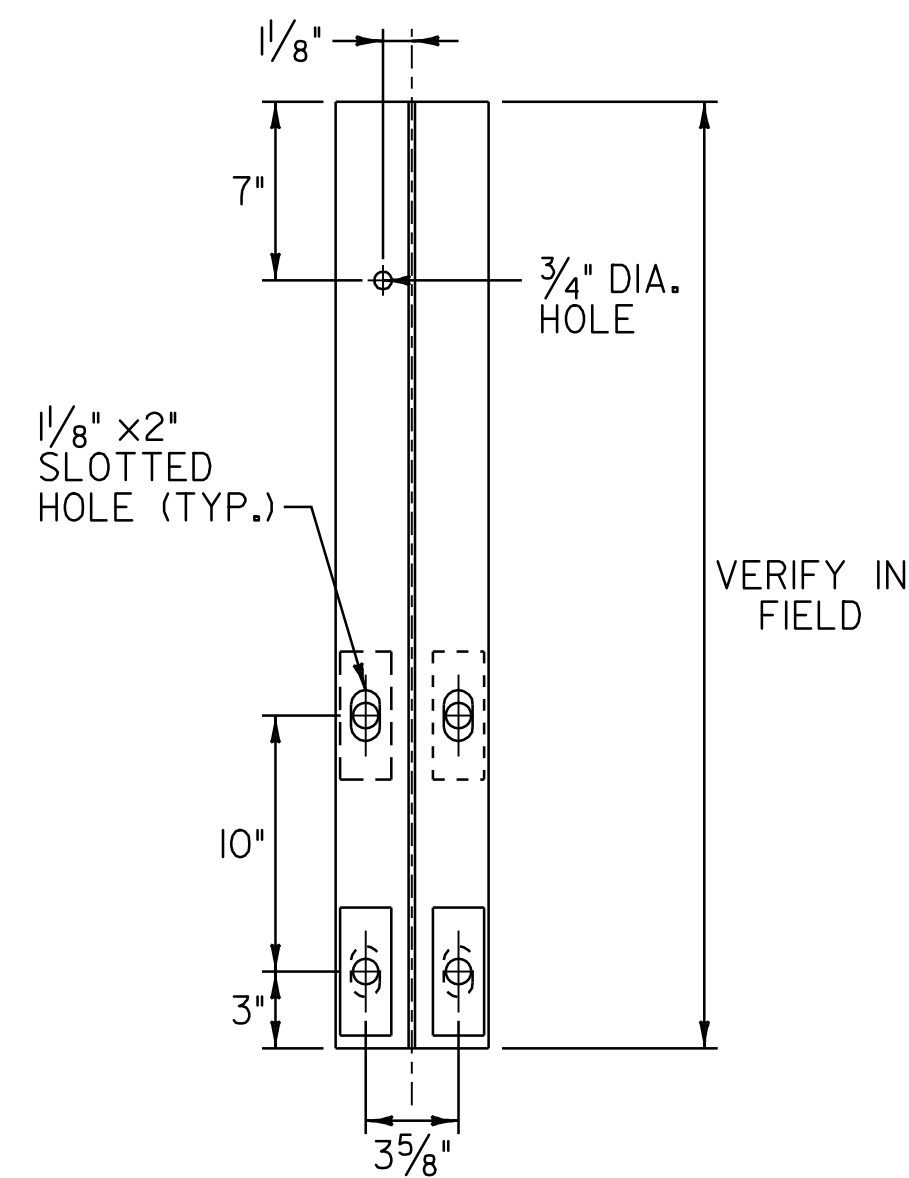
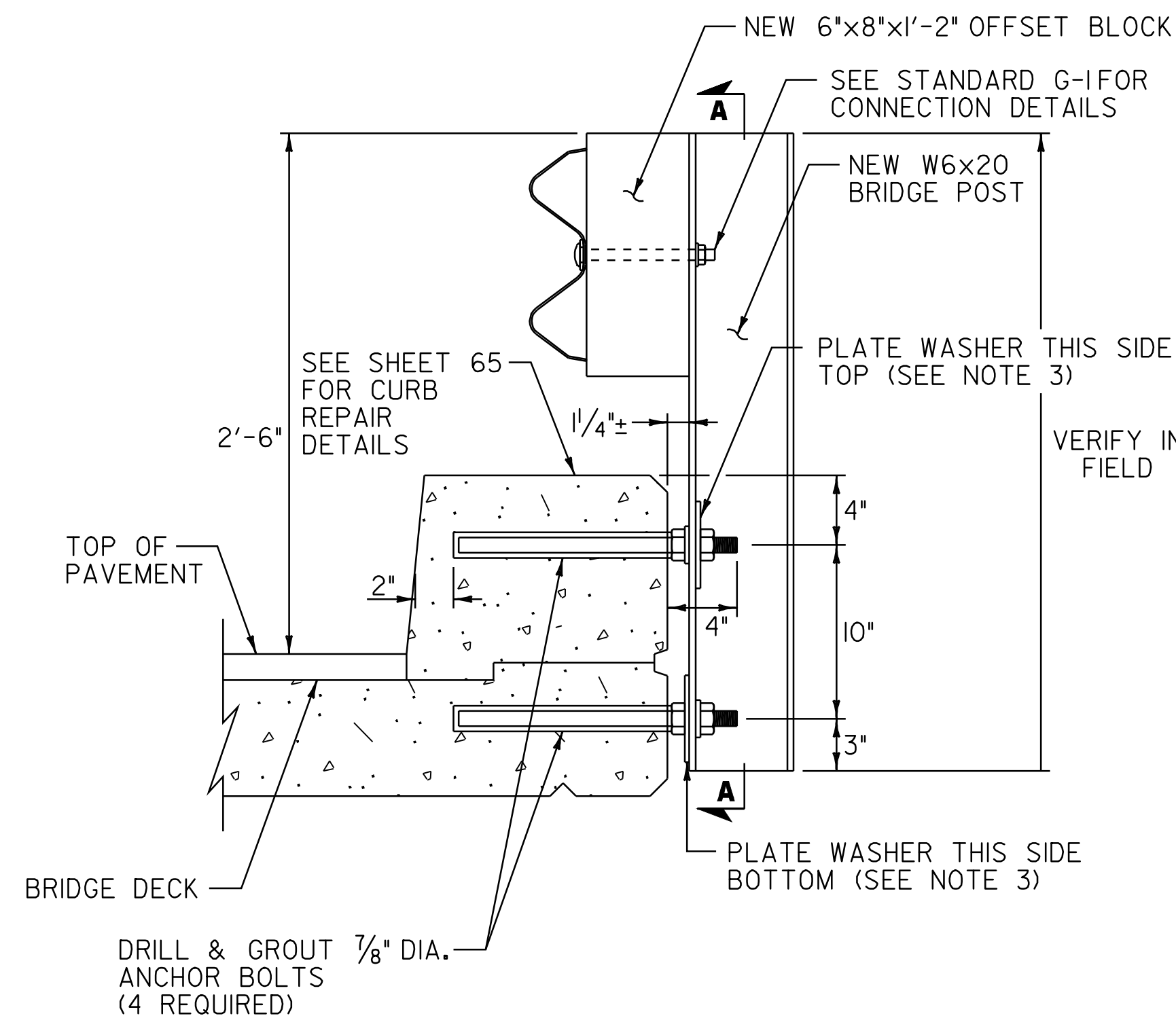


BR 53 VT. ROUTE 30 MM 0.300 = STA. 15+84.00



SECTION A-A



**DETAIL A
BR 53 BRIDGE POST**

NOTES:

- EXISTING CONCRETE BRIDGE POSTS TO BE REMOVED. SEE SHEET 65 FOR DETAILS.
- INSTALL FOUR NEW FASCIA MOUNTED STEEL BRIDGE POSTS ON EACH SIDE OF BRIDGE. SEE POST DETAILS THIS SHEET. SEE CURB REPAIR DETAILS ON SHEET 65.
- SEE STANDARD SHEET SB-R6-82 FOR ADDITIONAL DETAILS.
- NEW ASTM A-449 7/8" DIAMETER ANCHOR BOLTS SHALL BE FURNISHED EACH WITH TWO NUTS, ONE PLATE WASHER, AND ONE STANDARD WASHER.

NOT TO SCALE

**BRIDGE
DETAIL
SHEET #2**

PROJECT NAME: MANCHESTER
PROJECT NUMBER: STP 2203(I)S

FILE NAME: p99c158.dgn
PROJECT LEADER: D.E.G.
DESIGNED BY: M.J.M.
IPARM FILE: p05c046bd02.i

PLOT DATE: 09-MAY-2008
DRAWN BY: C.A.K.
CHECKED BY: D.W.E.
SHEET 64 OF 68