

646.402 DURABLE 4 INCH WHITE LINE, THERMOPLASTIC
 HISTORIC VT. ROUTE 7A:
 STA. 255+00.00 - STA. 255+70.00 SOLID LANE LINE LT
 STA. 255+70.00 - STA. 256+45.00 DOTTED LANE LINE LT
 STA. 255+70.00 - STA. 256+45.00 DOTTED LANE LINE RT
 STA. 256+45.00 - STA. 257+10.00 SOLID LANE LINE RT
 STA. 257+00.00 - STA. 257+95.00 SOLID EDGE LINE RT
 STA. 257+87.00 - STA. 258+01.00 RT, NO PARKING HATCHING
 STA. 257+87.00 - STA. 258+69.00 LT, PARKING SPACES
 STA. 258+01.00 - STA. 259+00.00 RT, PARKING SPACES
 STA. 258+96.00 - STA. 259+00.00 LT, PARKING SPACES

VT. ROUTE 30:
 STA. I+09.00 - STA. I+53.00 LT, PARKING SPACES
 STA. I+83.00 - STA. 2+00.00 LT, PARKING SPACES
 STA. I+67.00 - STA. 2+00.00 RT, PARKING SPACES

VT. ROUTE II:
 STA. 0+40.00 - STA. I+52.00 SOLID LANE LINE LT

646.602 TEMPORARY 4 INCH WHITE LINE, PAINT
 HISTORIC VT. ROUTE 7A:
 STA. 255+00.00 - STA. 255+70.00 SOLID LANE LINE LT
 STA. 255+70.00 - STA. 256+45.00 DOTTED LANE LINE LT
 STA. 255+70.00 - STA. 256+45.00 DOTTED LANE LINE RT
 STA. 256+45.00 - STA. 257+10.00 SOLID LANE LINE RT
 STA. 257+00.00 - STA. 257+95.00 SOLID EDGE LINE RT
 STA. 257+87.00 - STA. 258+01.00 RT, NO PARKING HATCHING
 STA. 257+87.00 - STA. 258+69.00 LT, PARKING SPACES
 STA. 258+01.00 - STA. 259+00.00 RT, PARKING SPACES
 STA. 258+96.00 - STA. 259+00.00 LT, PARKING SPACES

VT. ROUTE 30:
 STA. I+09.00 - STA. I+53.00 LT, PARKING SPACES
 STA. I+83.00 - STA. 2+00.00 LT, PARKING SPACES
 STA. I+67.00 - STA. 2+00.00 RT, PARKING SPACES

VT. ROUTE II:
 STA. 0+40.00 - STA. I+52.00 SOLID LANE LINE LT

646.412 DURABLE 4 INCH WHITE LINE, THERMOPLASTIC
 (ALL LINES WILL INCLUDE C/L BREAKS FOR TOWN HIGHWAYS)
 HISTORIC VT. ROUTE 7A:
 STA. 254+00.00 - STA. 254+25.00 DOUBLE SOLID MEDIAN LT/RT
 STA. 255+25.00 - STA. 259+00.00 DOUBLE SOLID C/L

VT. ROUTE II:
 STA. 0+40.00 - STA. 2+00.00 DOUBLE SOLID C/L
 VT. ROUTE 30:
 STA. 0+75.00 - STA. 2+00.00 DOUBLE SOLID C/L

646.612 TEMPORARY 4 INCH YELLOW LINE, PAINT
 (ALL LINES WILL INCLUDE C/L BREAKS FOR TOWN HIGHWAYS)
 HISTORIC VT. ROUTE 7A:
 STA. 254+00.00 - STA. 254+25.00 DOUBLE SOLID MEDIAN LT/RT
 STA. 255+25.00 - STA. 259+00.00 DOUBLE SOLID C/L

VT. ROUTE II:
 STA. 0+40.00 - STA. 2+00.00 DOUBLE SOLID C/L
 VT. ROUTE 30:
 STA. 0+75.00 - STA. 2+00.00 DOUBLE SOLID C/L

646.491 DURABLE LETTER OR SYMBOL, TYPE I TAPE

HISTORIC VT. ROUTE 7A:
 STA. 255+65.00 C/L, ARROW, (1EA)
 STA. 256+50.00 C/L, ARROW, (1EA)

VT. ROUTE II:
 STA. 0+48.00 LT, ARROW, (1EA)
 STA. 0+48.00 C/L, ARROW, (1EA)
 STA. 0+98.00 LT, "ONLY" (4 EA)
 STA. 0+98.00 C/L, "ONLY" (4 EA)
 STA. I+48.00 LT, ARROW, (1EA)
 STA. I+48.00 C/L, ARROW, (1EA)

VT. ROUTE 30:
 STA. I+25.00 LT, HANDICAP SYMBOL (1EA)

646.692 TEMPORARY LETTER OR SYMBOL, PAINT

HISTORIC VT. ROUTE 7A:
 STA. 255+65.00 C/L, ARROW, (2 EA)
 STA. 256+50.00 C/L, ARROW, (2 EA)

VT. ROUTE II:
 STA. 0+48.00 LT, ARROW, (2 EA)
 STA. 0+48.00 C/L, ARROW, (2 EA)
 STA. I+48.00 LT, ARROW, (2 EA)
 STA. I+48.00 C/L, ARROW, (2 EA)

VT. ROUTE 30:
 STA. I+25.00 LT, HANDICAP SYMBOL (1EA)

646.501 DURABLE CROSSWALK MARKING, TYPE I TAPE

HISTORIC VT. ROUTE 7A:
 STA. 256+40.00 LT/RT
 STA. 257+83.00 LT/RT

VT. ROUTE II:
 STA. 0+36.00 LT/RT

VT. ROUTE 30:
 STA. I+63.00 LT/RT

646.702 TEMPORARY CROSSWALK MARKING, PAINT

HISTORIC VT. ROUTE 7A:
 STA. 256+40.00 LT/RT
 STA. 257+83.00 LT/RT

VT. ROUTE II:
 STA. 0+36.00 LT/RT

VT. ROUTE 30:
 STA. I+63.00 LT/RT

646.481 DURABLE 24 INCH STOP BAR, TYPE I TAPE

VT. ROUTE II:
 STA. 0+40.00 LT/RT

VT. ROUTE 30:
 STA. 0+75.00 LT

646.682 TEMPORARY 24 INCH STOP BAR, PAINT

VT. ROUTE II:
 STA. 0+40.00 LT/RT

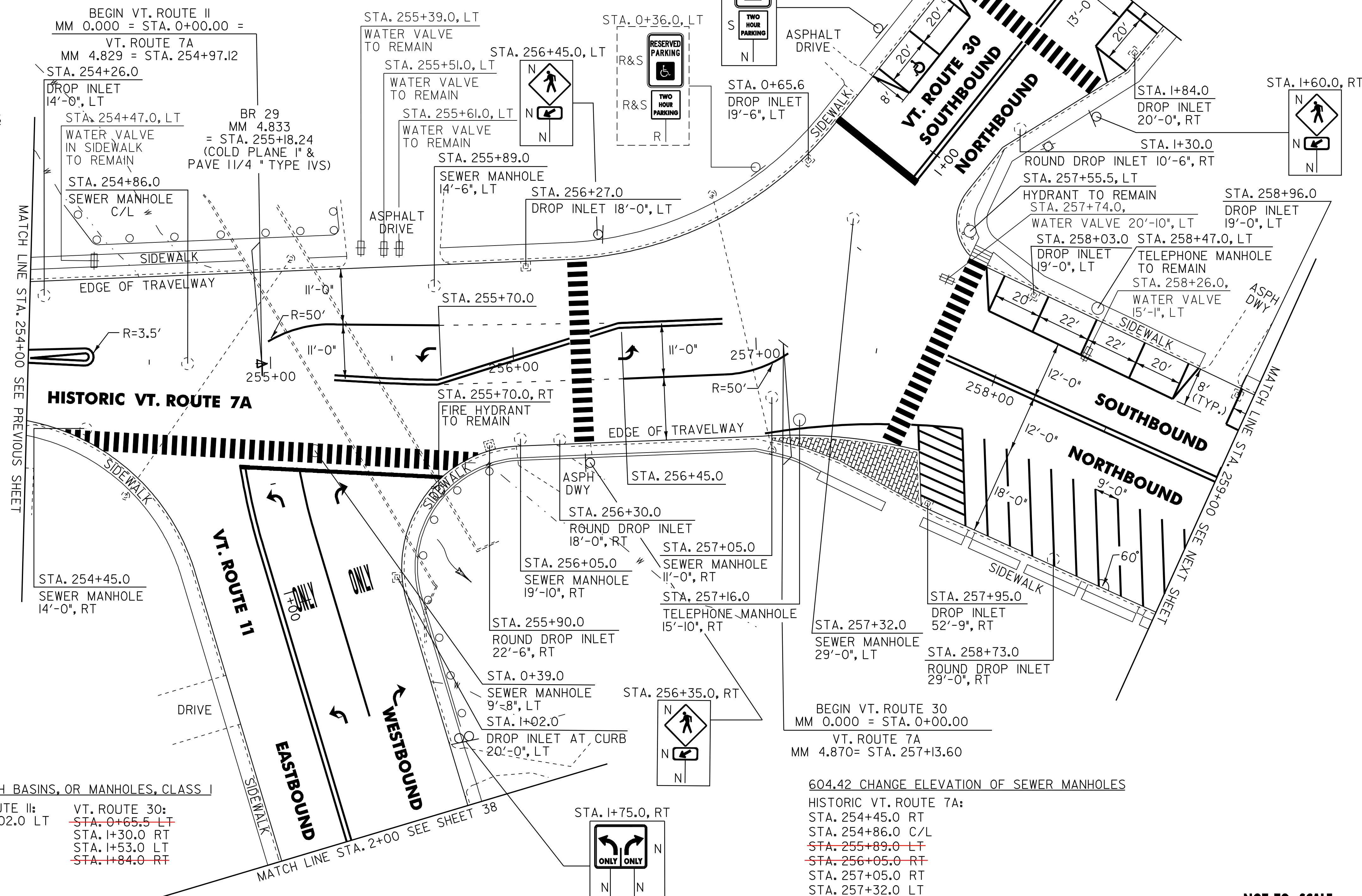
VT. ROUTE 30:
 STA. 0+75.00 LT

675.50 REMOVING SIGNS

AS SHOWN - 2

675.60 ERECTING SALVAGED SIGNS

AS SHOWN - 2



604.412 REHAB. DROP INLETS, CATCH BASINS, OR MANHOLES, CLASS I

HISTORIC VT. ROUTE 7A:	VT. ROUTE II:	VT. ROUTE 30:
STA. 254+26.0 LT	STA. I+02.0 LT	STA. 0+65.5 LT
STA. 255+90.0 RT		STA. I+30.0 RT
STA. 256+27.0 LT		STA. I+53.0 LT
STA. 256+30.0 RT		STA. I+84.0 RT
STA. 257+95.0 RT		
STA. 258+03.0 LT		
STA. 258+73.0 RT		
STA. 258+96.0 LT		

604.40 CHANGING ELEVATION OF DROP INLETS, CATCH BASINS, OR MANHOLES

HISTORIC VT. ROUTE 7A:
~~STA. 257+16.0, RT~~

604.42 CHANGE ELEVATION OF SEWER MANHOLES

HISTORIC VT. ROUTE 7A:
 STA. 254+45.0 RT
 STA. 254+86.0 C/L
~~STA. 255+89.0 LT~~
~~STA. 256+05.0 RT~~
 STA. 257+05.0 RT
 STA. 257+32.0 LT

VT. ROUTE II:
~~STA. 0+39.0 LT~~

629.20 ADJUST ELEVATION OF VALVE BOX

HISTORIC VT. ROUTE 7A:
 STA. 257+74.0 LT
 STA. 258+26.0 LT

SIGN LEGEND

R = REMOVE
 S = SALVAGE
 N = NEW
 RET = RETAIN
 B-B = BACK TO BACK
 EXISTING = - - - - -
 NEW = _____

NOT TO SCALE

PROJECT LAYOUT SHEET #19

PROJECT NAME: MANCHESTER
 PROJECT NUMBER: STP 2203(I)S

FILE NAME: p99cl58.dgn	PLOT DATE: 09-MAY-2008
PROJECT LEADER: D.E.G.	DRAWN BY: C.A.K.
DESIGNED BY: M.J.M.	CHECKED BY: D.W.E.
IPARM FILE: p99cl58I9.i	SHEET 33 OF 68