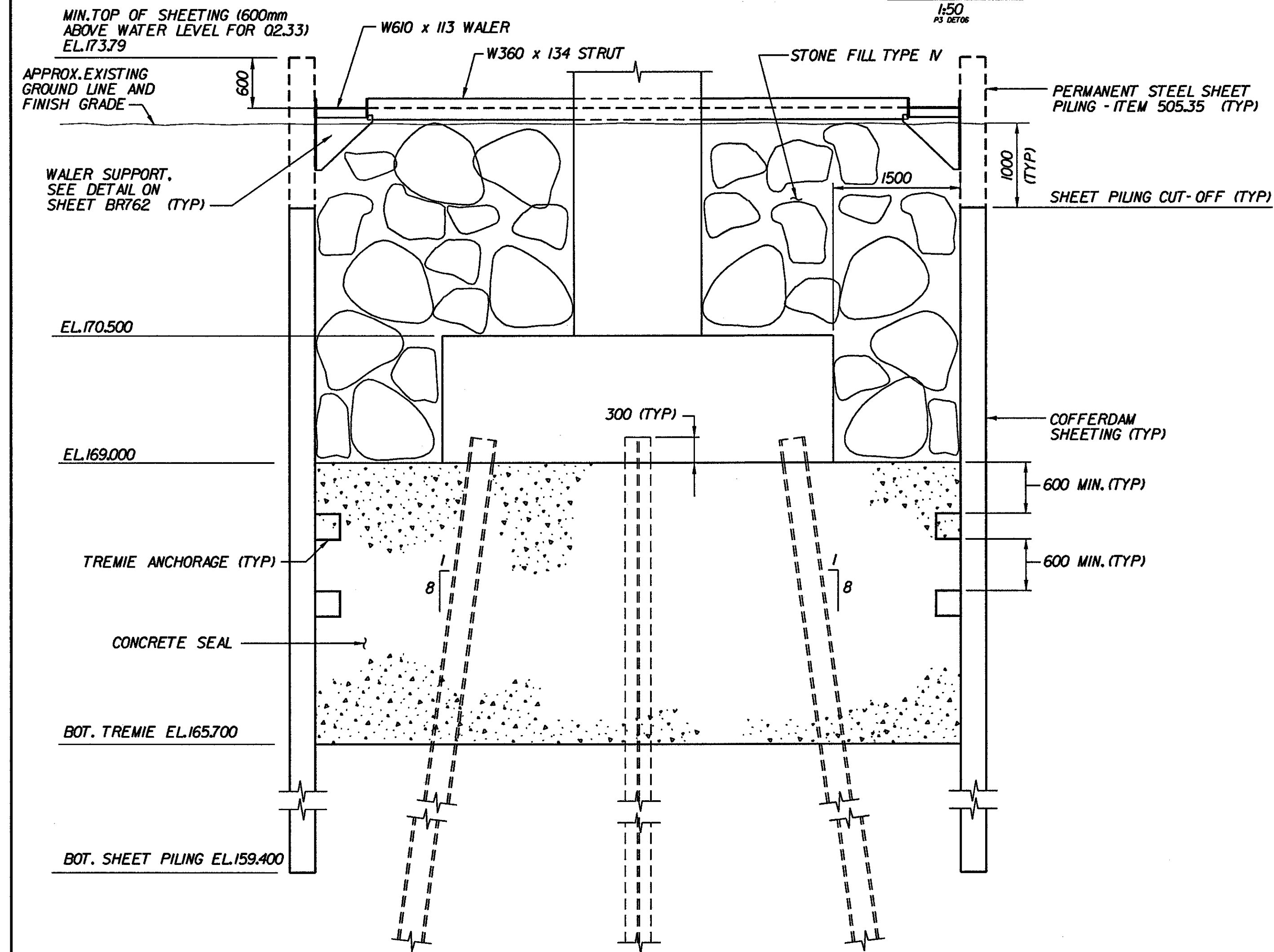
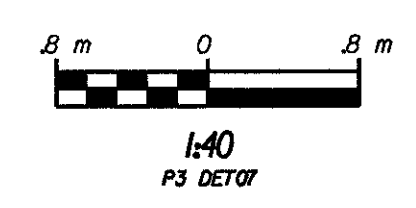


**PIER 3 COFFERDAM PLAN**



**TYPICAL COFFERDAM SECTION**



**NOTES:**

1. ESTIMATED PILE LENGTH = 13.0 m. ALL PILES SHALL HAVE AN ULTIMATE CAPACITY OF 2.75 TIMES THE DESIGN LOAD OR 1300 KN. PILES SHALL BE DRIVEN TO REFUSAL.
2. ALL PILES ARE HP360x132.
3. FOR PILE SPICE DETAIL, SEE BRIDGE SHEET BR755.
4. INDICATES DIRECTION OF I ON B BATTER.
5. SEE PILE DRIVING AND LOAD TEST NOTES ON SHEET BR755.

<b>STATE OF VERMONT AGENCY OF TRANSPORTATION</b>	
Town Of	BENNINGTON
Highway No.	VT. RTE. 9
Bridge No.	BR700
Log Sta.	
Surv. Sta.	16+800
VT. RTE. 9 OVER SILK ROAD AND WALLLOOMSAC RIVER	
PIER 3 PILE PLAN AND COFFERDAM DETAILS	
Designed By	C. TUTUNJIAN
Checked By	D. VIEN
Date	6/00
Drawn by	J. HOTALING/B. WEATHERBY
Bridge Design Supervisor	M.W. OLSTAD
Date	9/00
PROJECT	BENNINGTON-HOOSICK
PROJECT NO.	D.P.J. 0146(1)
I.G.C. Info.	
Bridge Sheet No.	BR758
Sheet	241 OF 385