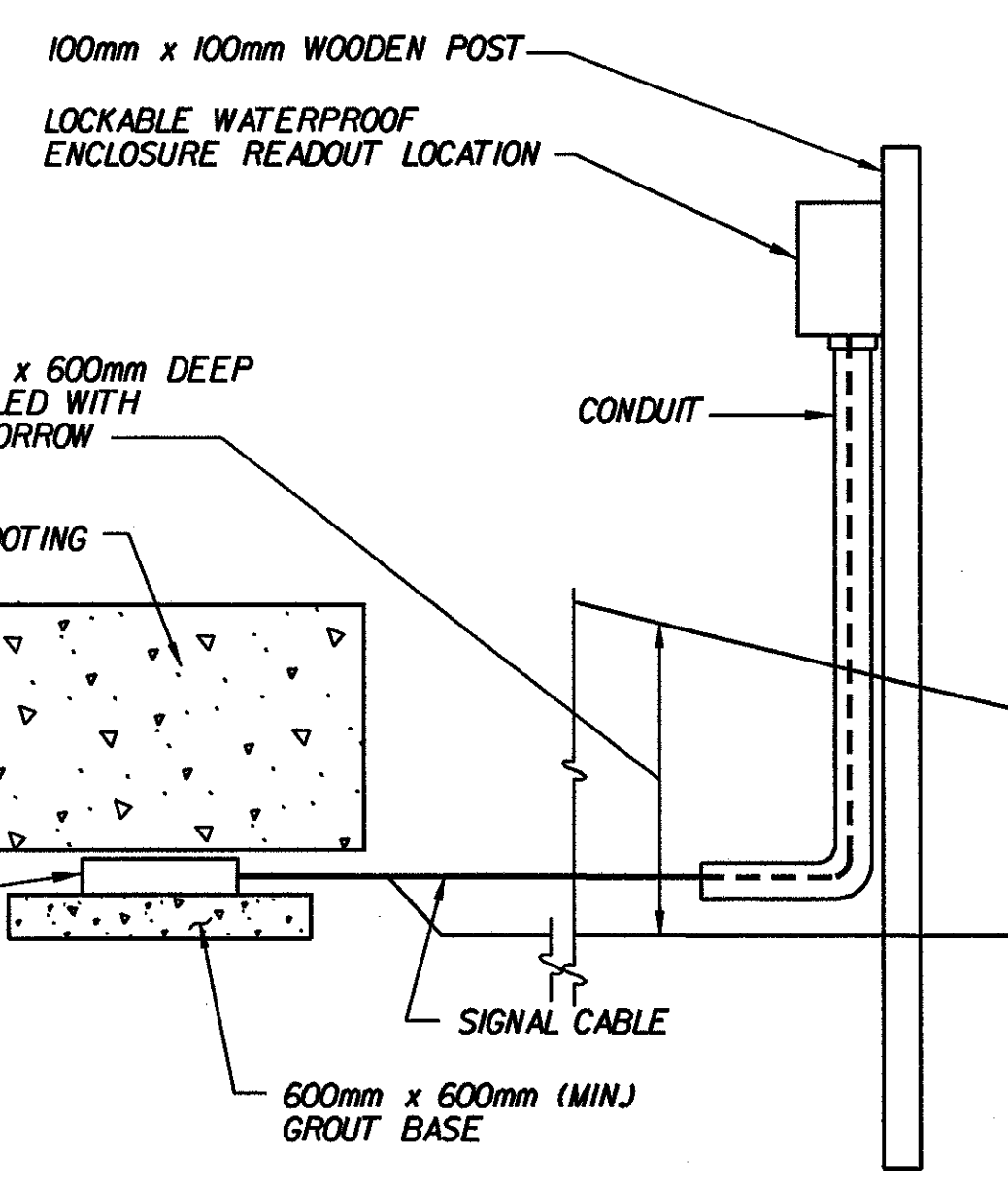
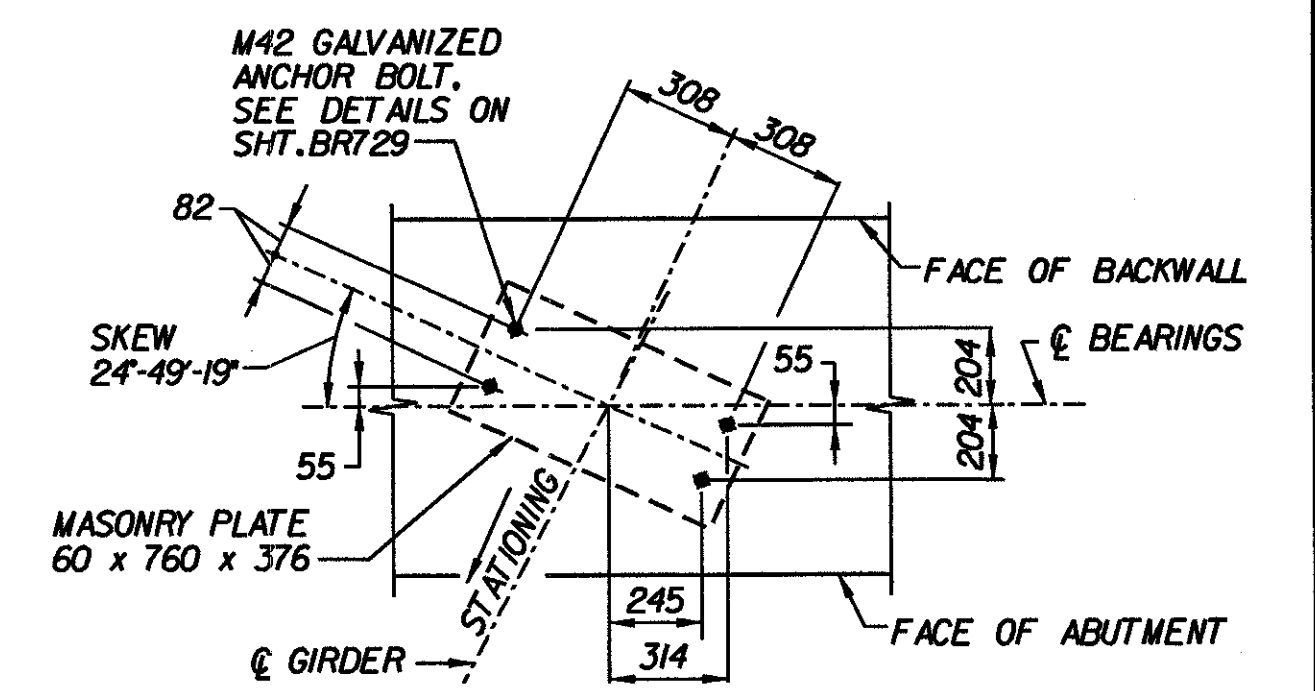
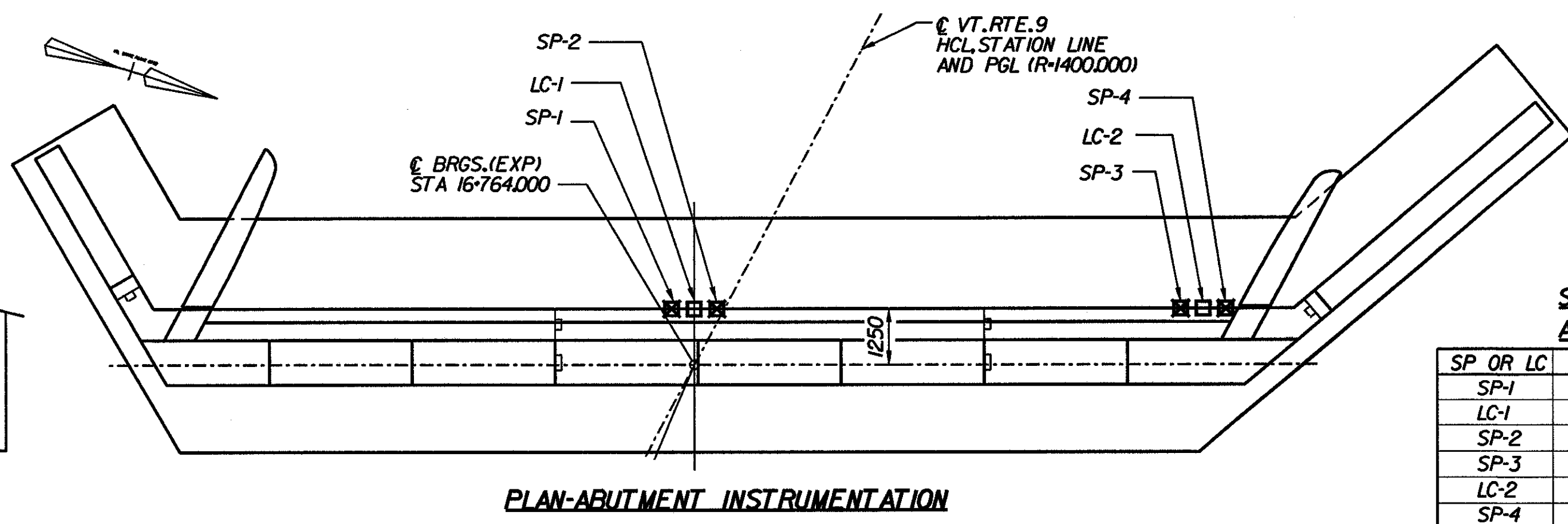


- NOTES:**
1. JOINT PLATE ASSEMBLY SEATS SHALL BE INSTALLED IN BACKWALLS, SUBSIDIARY TO ITEM 516JO. SEE DETAILS ON BR735.
 2. THE CURB OVERLAY AND HEADER CONCRETE SHALL BE PLACED AFTER THE INSTALLATION OF THE JOINT ASSEMBLY. SEE BR732 TO BR736 FOR JOINT DETAILS.



EARTH PRESSURE CELL DETAIL AT BASE OF ABUTMENT FOOTING
N.T.S.



PLAN-ABUTMENT INSTRUMENTATION

SETTLEMENT PLATFORM LEGEND:

- LC-1 INDICATES LOCATION OF EARTH PRESSURE CELL ITEM 62360
- ⊠ SP-2 INDICATES LOCATION OF VIBRATING WIRE SETTLEMENT PLATFORM, ITEM 62323

SETTLEMENT PLATFORM (SP) AND LOAD CELL (LC) SCHEDULE

SP OR LC	STATION	OFFSET	DEPTH
SP-1	16-763	0.5m RT.	BASE OF FILL
LC-1	16-763	CL	TOP OF FILL
SP-2	16-763	0.5m LT.	TOP OF BEDROCK
SP-3	16-763	11m LT.	BASE OF FILL
LC-2	16-763	11.5m LT.	TOP OF FILL
SP-4	16-763	12m LT.	TOP OF BEDROCK
SP-5	16-744	11m LT.	BASE OF FILL

NOTE: SEE SHEET BR701 FOR LOCATION OF SP-5.

STATE OF VERMONT AGENCY OF TRANSPORTATION

Town of	BENNINGTON	Bridge No.	BR700
Highway No.	VT. RTE. 9	Log Sta.	16+800
VT. RTE. 9 OVER SILK ROAD AND WALLOOMSAC RIVER			
ABUTMENT I PLAN			
Designed By	C. TUTUNJIAN	Drawn by	B. WEATHERBY/J. HOTALING
Checked By	L. AVERY	Date	6/00
		Bridge Design Supervisor	M. OLSTAD
		Date	9/00
PROJECT	BENNINGTON-HOOSICK		PROJECT NO.
			D.P.L. 0146(1) C/4
L.G.C. Info.			
Bridge Sheet No.	BR740	Sheet	223 OF 385

16-557-00000-000-PLAN / 200 / 5/23/2000 / 16000