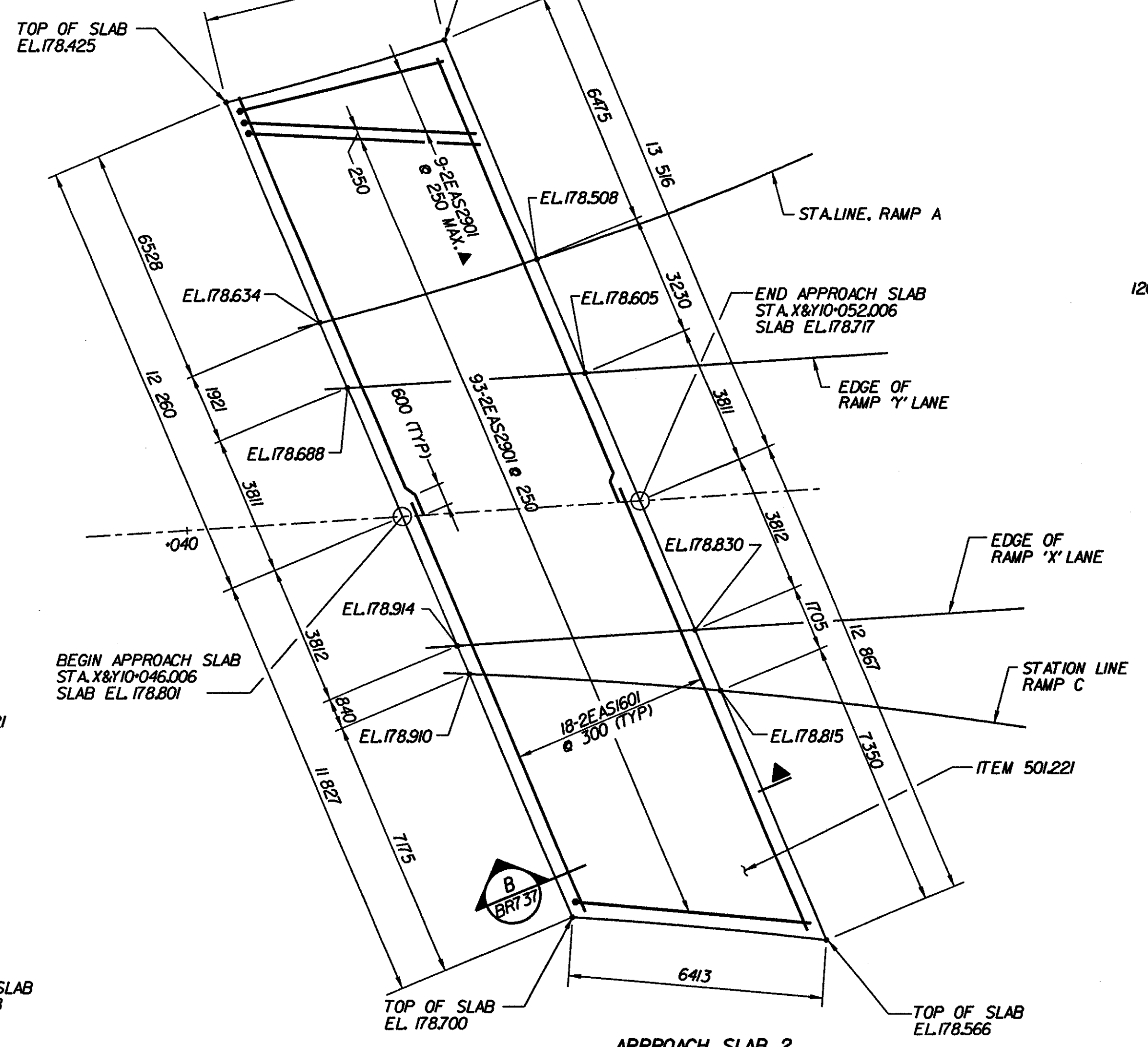
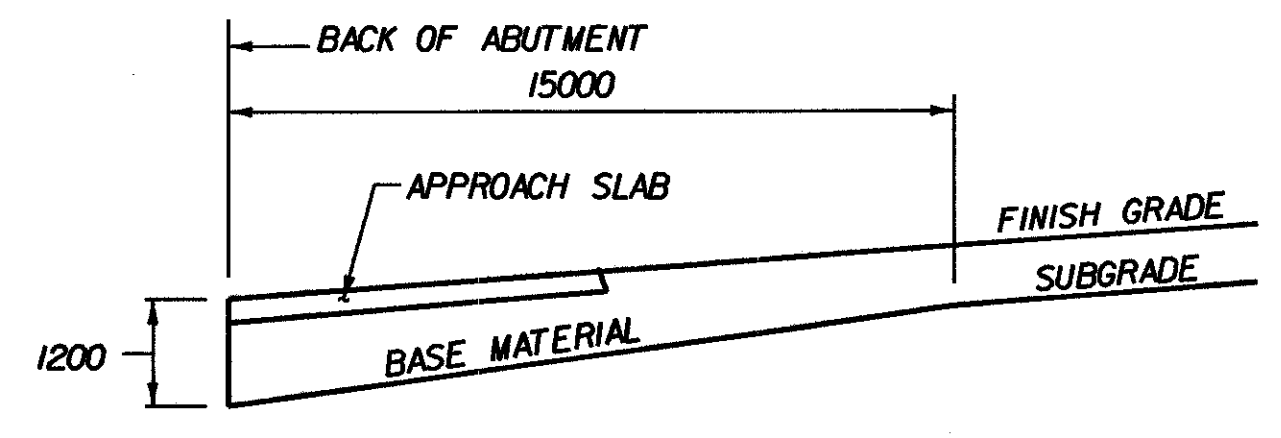
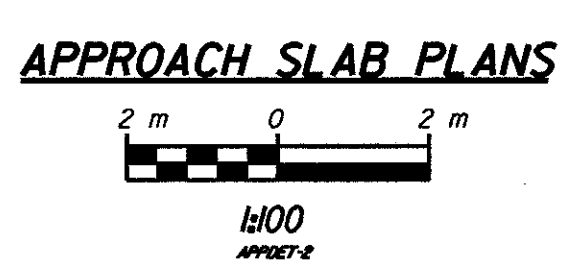


APPROACH SLAB 1



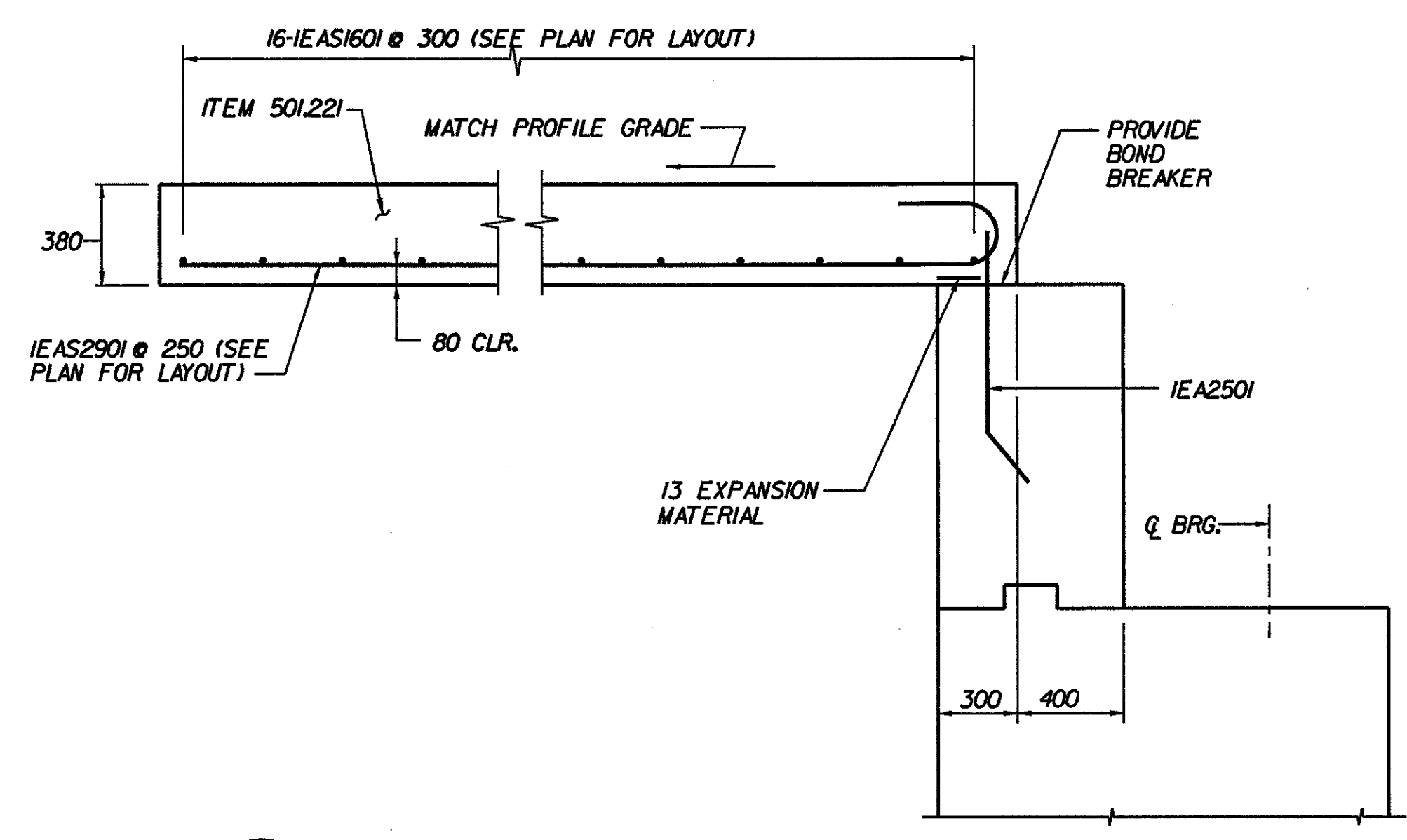
APPROACH SLAB 2



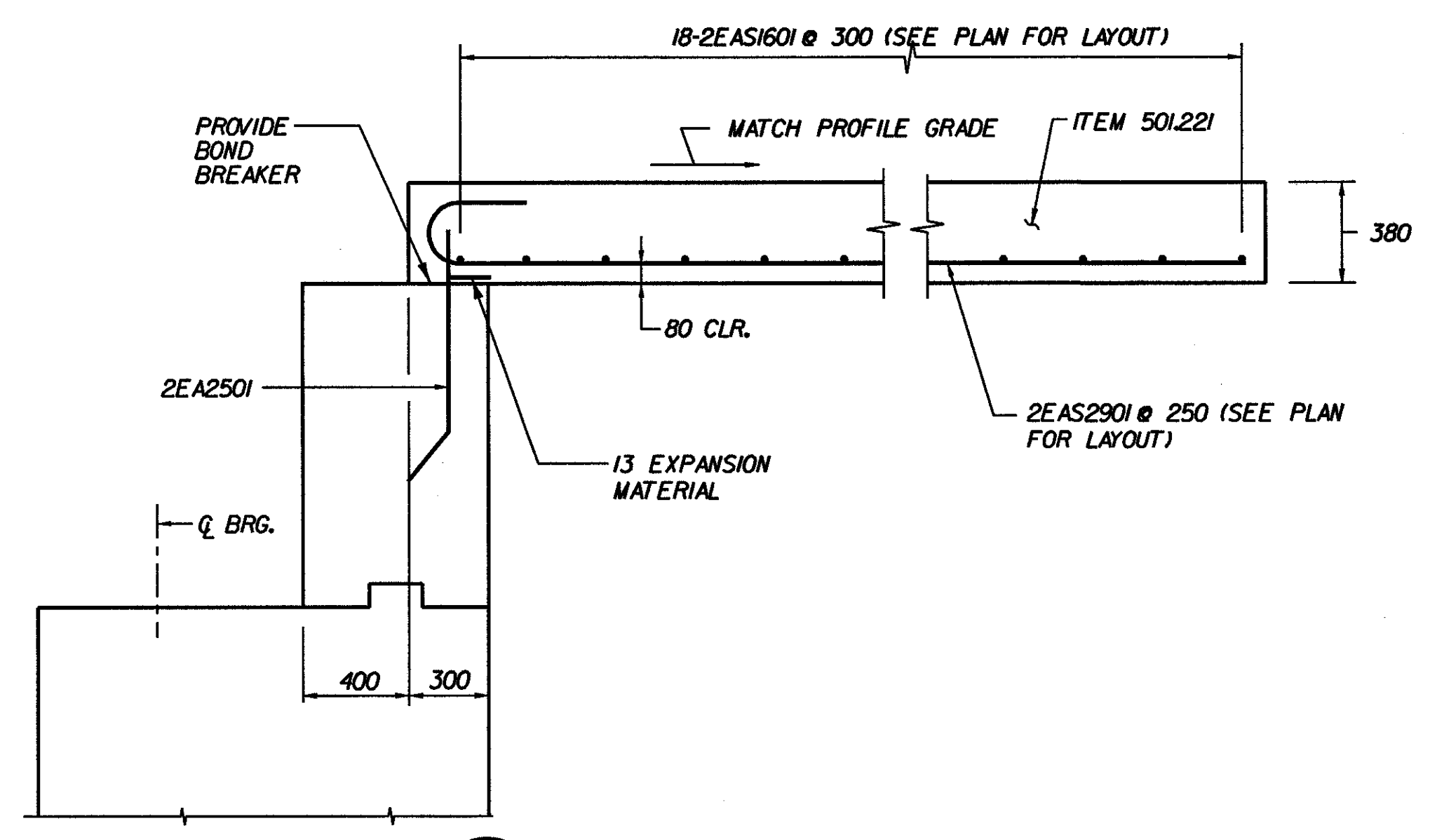
SUBBASE DETAIL AT ABUTMENTS
 (ELEVATION IN CUT AND FILL)
 N.T.S.

APPROACH SLAB NOTE 1

1. ALL APPROACH SLAB REINFORCING STEEL SHALL BE EPOXY COATED.
2. ▲ CUT IN FIELD TO FIT.



A APPROACH SLAB 1 SECTION
 BR737
 Scale: 1/20
 1 m 0 1 m



B APPROACH SLAB 2 SECTION
 BR737
 Scale: 1/20
 1 m 0 1 m

STATE OF VERMONT
 AGENCY OF TRANSPORTATION

Town of	BENNINGTON	Bridge No.	BR700
Highway No.	VT. RTE. 9	Log Sta.	
		Surv. Sta.	16+800
VT. RTE. 9 OVER SILK ROAD AND WALLOOMSAC RIVER			
APPROACH SLAB DETAILS			
Designed By	M. GOGUEN	Drawn by	J. HOTALING/B. WEATHERBY
Checked By	D. VIENI	Date	6/00
		Bridge Design Supervisor	M.W. OLSTAD
		Date	9/00
PROJECT	BENNINGTON-HOOSICK	PROJECT NO.	D.P.I. 0146(I) C/4
I.G.C. Info.			
Bridge Sheet No.	BR737	Sheet	220 OF 385