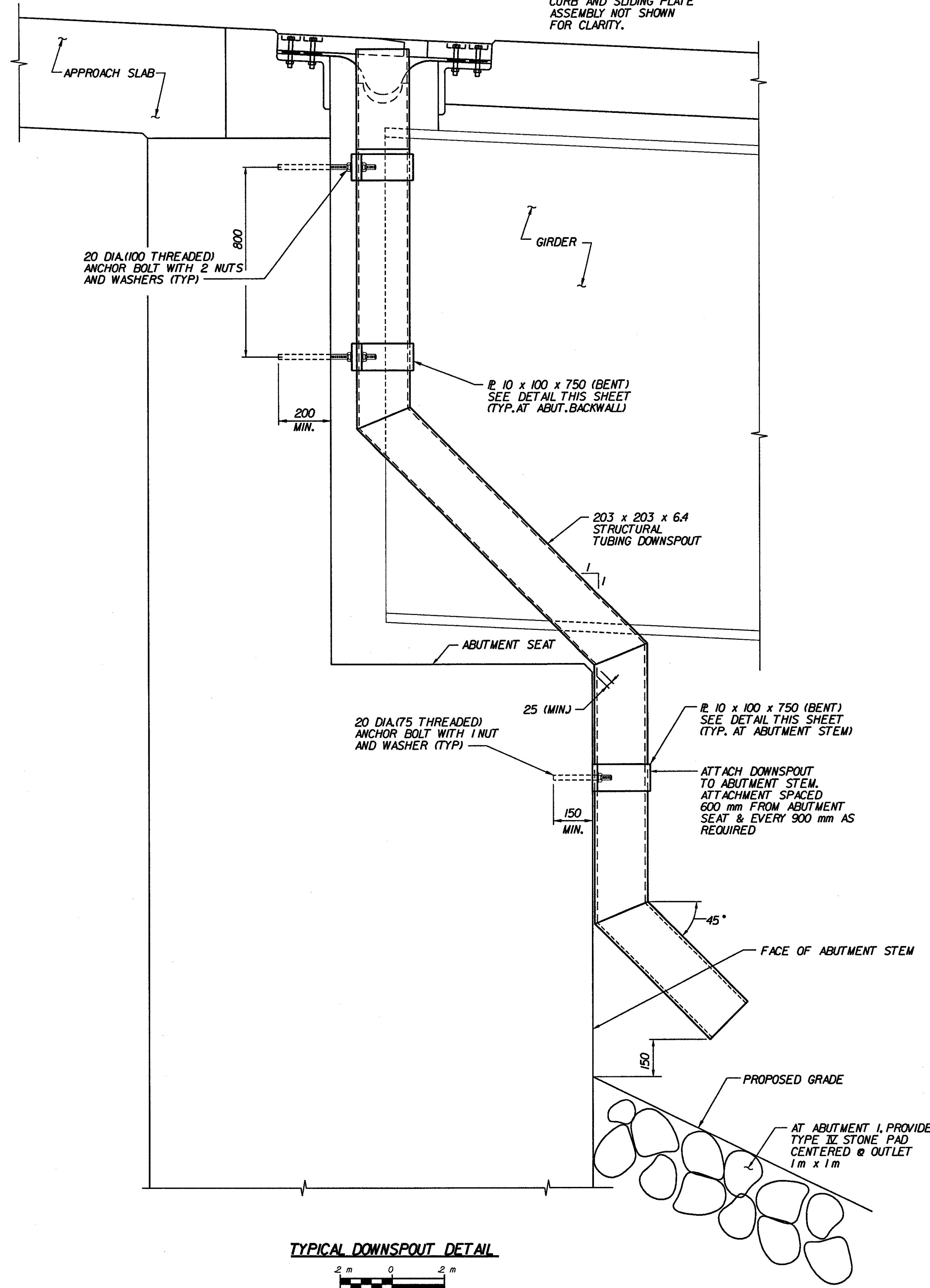
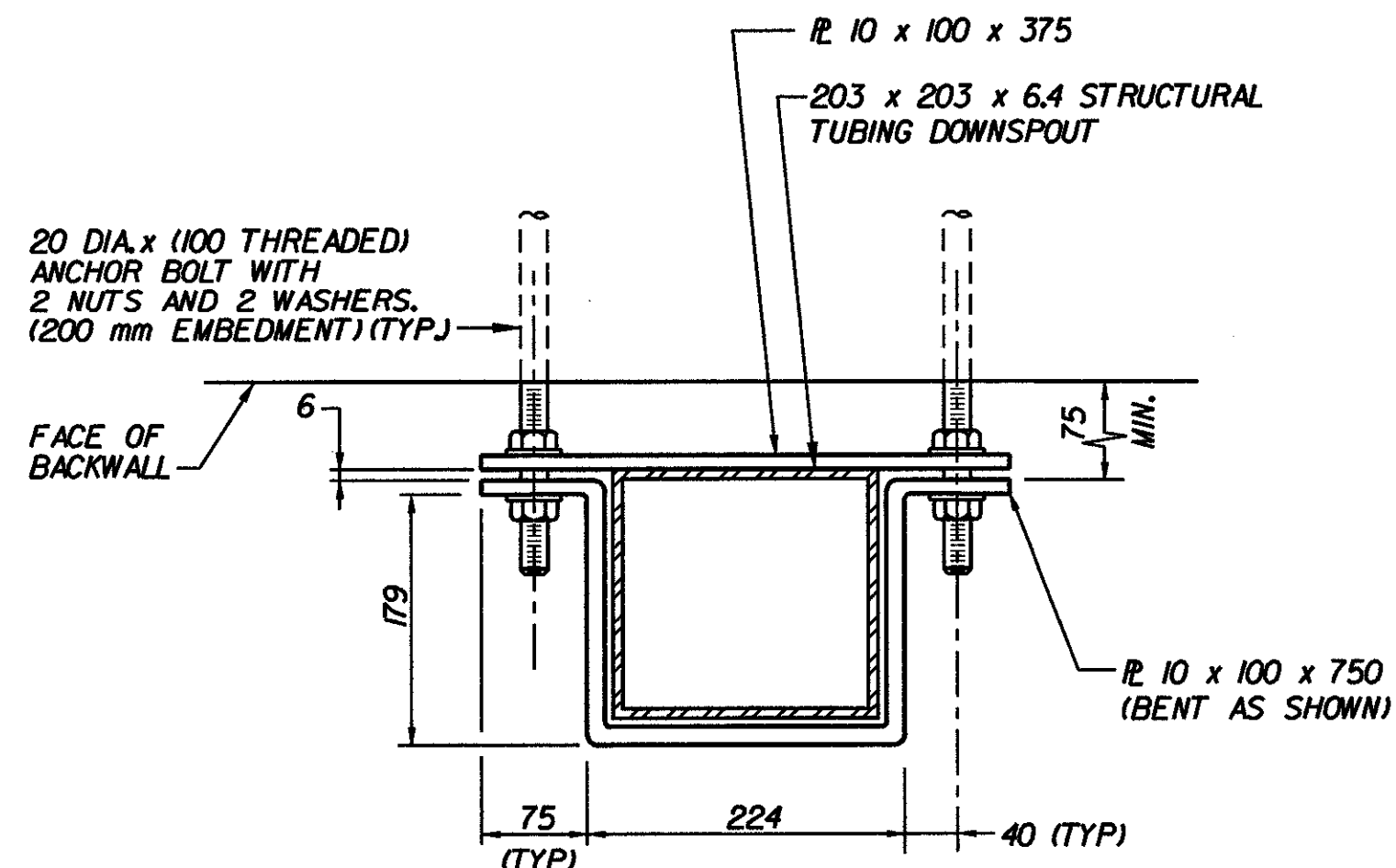
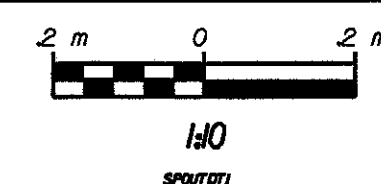


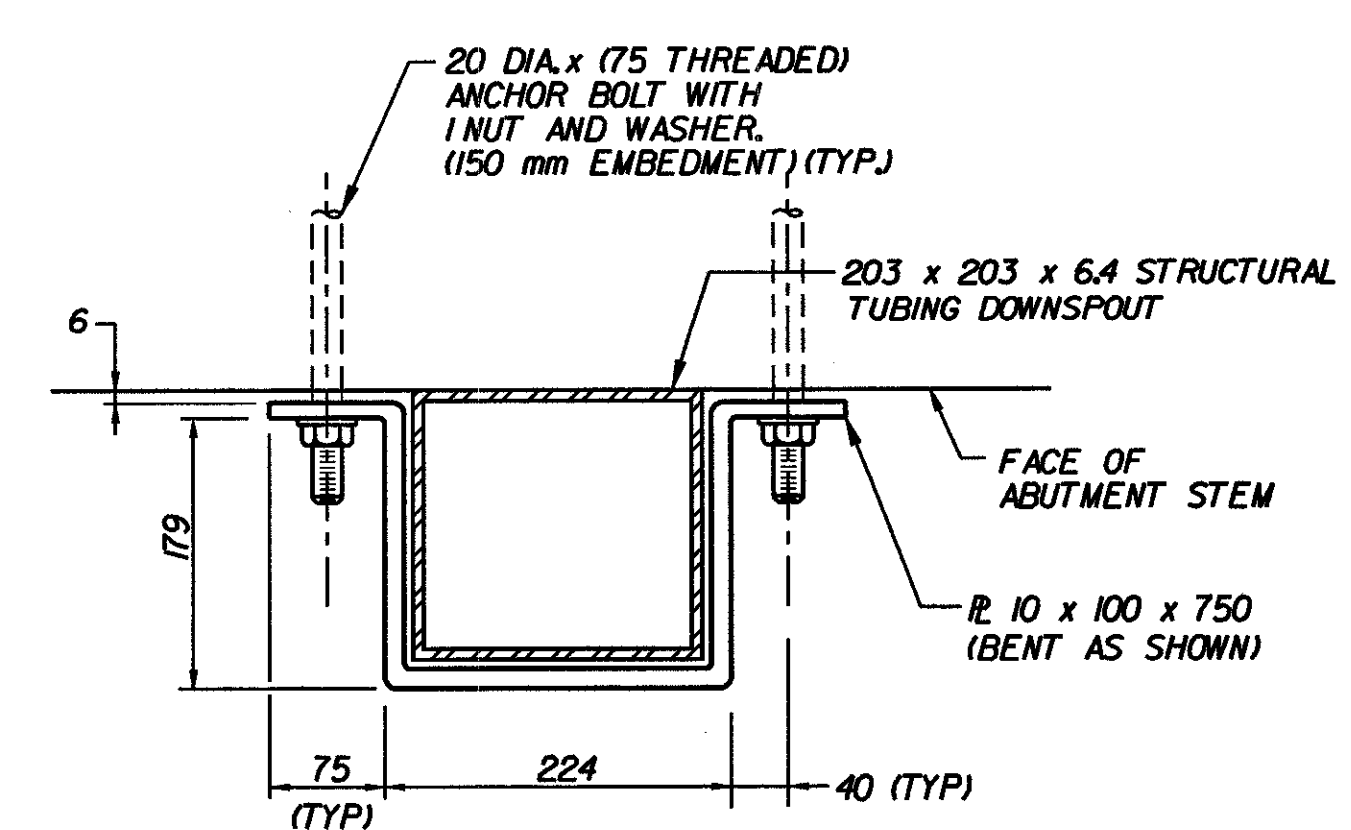
NOTE:
CURB AND SLIDING PLATE
ASSEMBLY NOT SHOWN
FOR CLARITY.



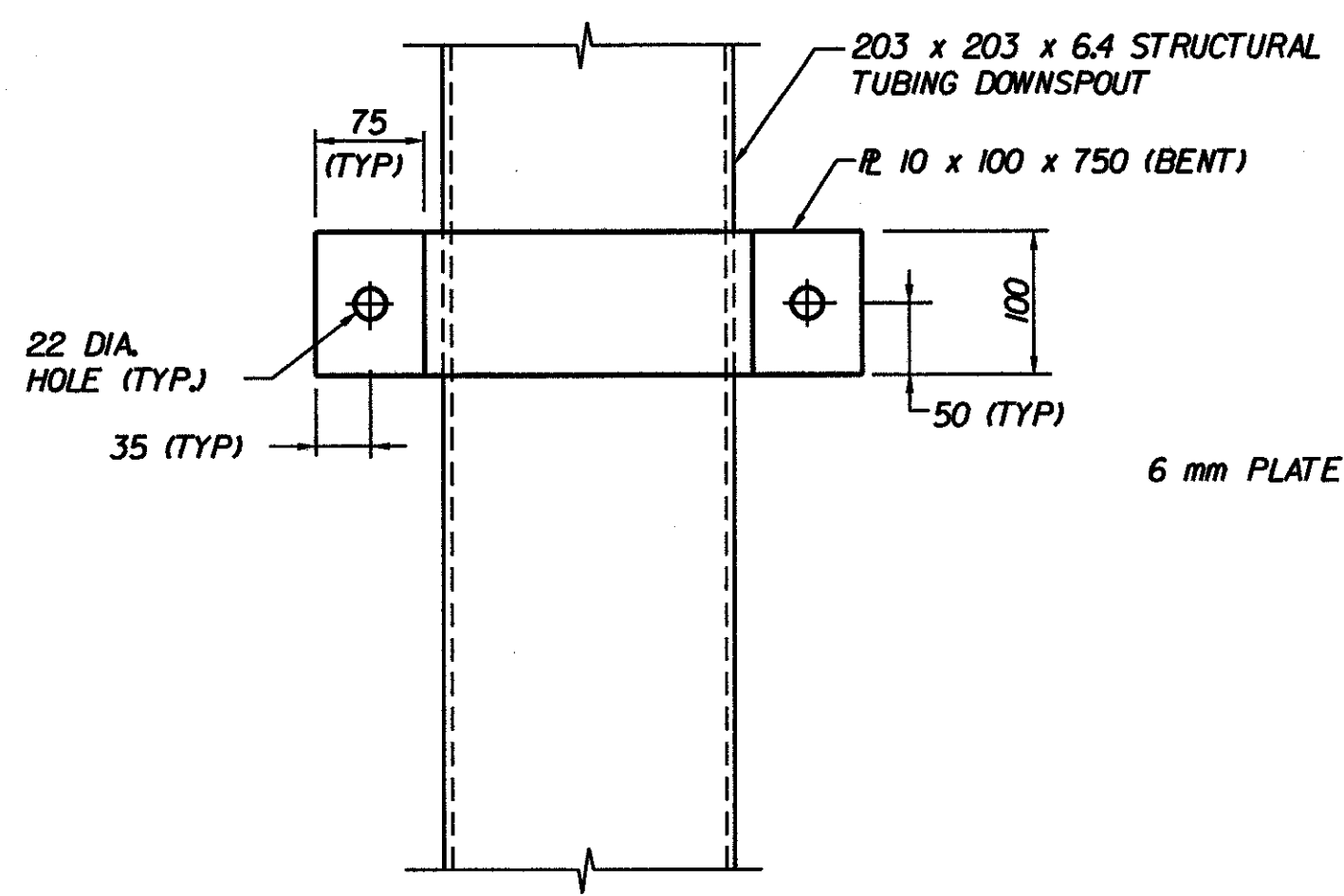
TYPICAL DOWNSPOUT DETAIL



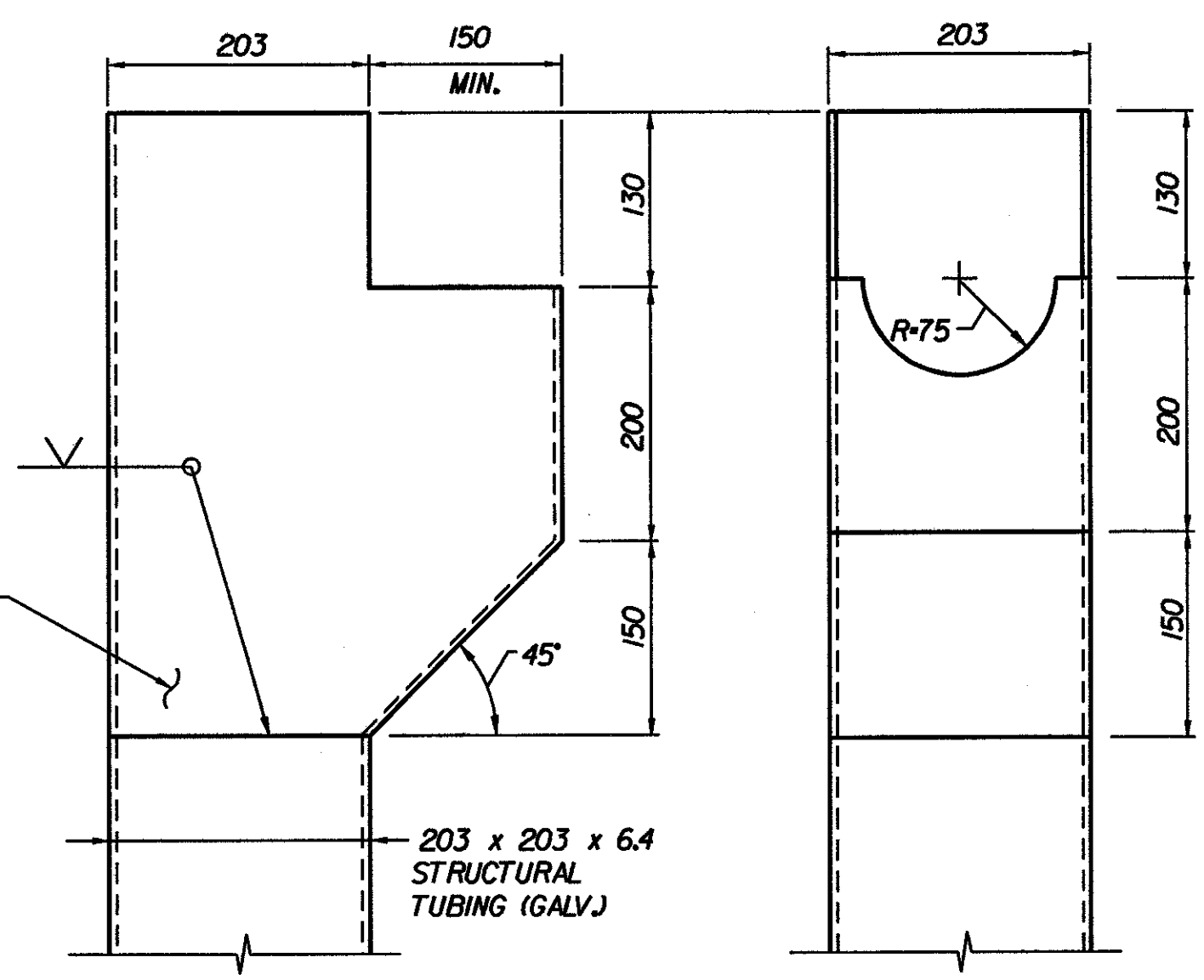
PLAN-DOWNSPOUT
CONNECTION DETAIL AT BACKWALL



PLAN-DOWNSPOUT
CONNECTION DETAIL AT ABUTMENT STEM



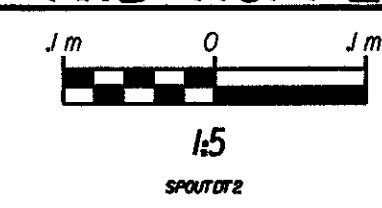
ELEVATION-DOWNSPOUT CONNECTION DETAIL



HOPPER ELEVATION-FRONT VIEW

HOPPER ELEVATION-SIDE VIEW

DOWNSPOUT AND HOPPER DETAILS



DOWNSPOUT NOTES:

- HOLLOW STRUCTURAL STEEL TUBING SHALL CONFORM TO ASTM A500 GRADE B OR ASTM A501.
- ALL BARS AND PLATES SHALL CONFORM TO AASHTO M270 GRADE 250 AND SHALL BE GALVANIZED.
- DOWNSPOUT SHALL BE GALVANIZED IN ACCORDANCE WITH SECTION 506J5 (A) AFTER FABRICATION.
- ALL DOWNSPOUT BOLTS AND RELATED HARDWARE SHALL BE ASTM A-307 AND SHALL BE GALVANIZED IN ACCORDANCE WITH SECTION 506J5 (A).
- WHERE THE GALVANIZING HAS BEEN REMOVED FROM THE DOWNSPOUT OR 100 mm BAR EITHER BY CUTTING, BURNING, WELDING, PLACING OR ANY OTHER MEANS, IT SHALL BE REPAIRED BY THOROUGHLY CLEANING THE DAMAGED AREAS WITH A WIRE BRUSH AND PAINTING THE DAMAGED AREAS WITH TWO COATS OF AN APPROVED SEALER.
- DOWNSPOUT SHALL BE PAID FOR UNDER THE ITEM 50675 'STRUCTURAL STEEL (SCUPPERS, DOWNSPOUTS)'.

**STATE OF VERMONT
AGENCY OF TRANSPORTATION**

Town Of	BENNINGTON	Bridge No.	BR700
Highway No.	VT. RTE. 9	Log Sta.	
		Surv. Sta.	16+800
VT. RTE. 9 OVER SILK ROAD AND WALLOOMSAC RIVER			
BRIDGE EXPANSION JOINT DETAILS - 5			
Designed By	M. GOGUEN	Drawn by	B. WEATHERBY
Checked By	D. VIENI	Date	11/99
		Bridge Design Supervisor	M. OLSTAD
		Date	9/00
PROJECT	BENNINGTON-HOOSICK	PROJECT NO.	D.P.I. 0146(I) C/4
I.G.C. Info.			
Bridge Sheet No.	BR736	Sheet	219 OF 385