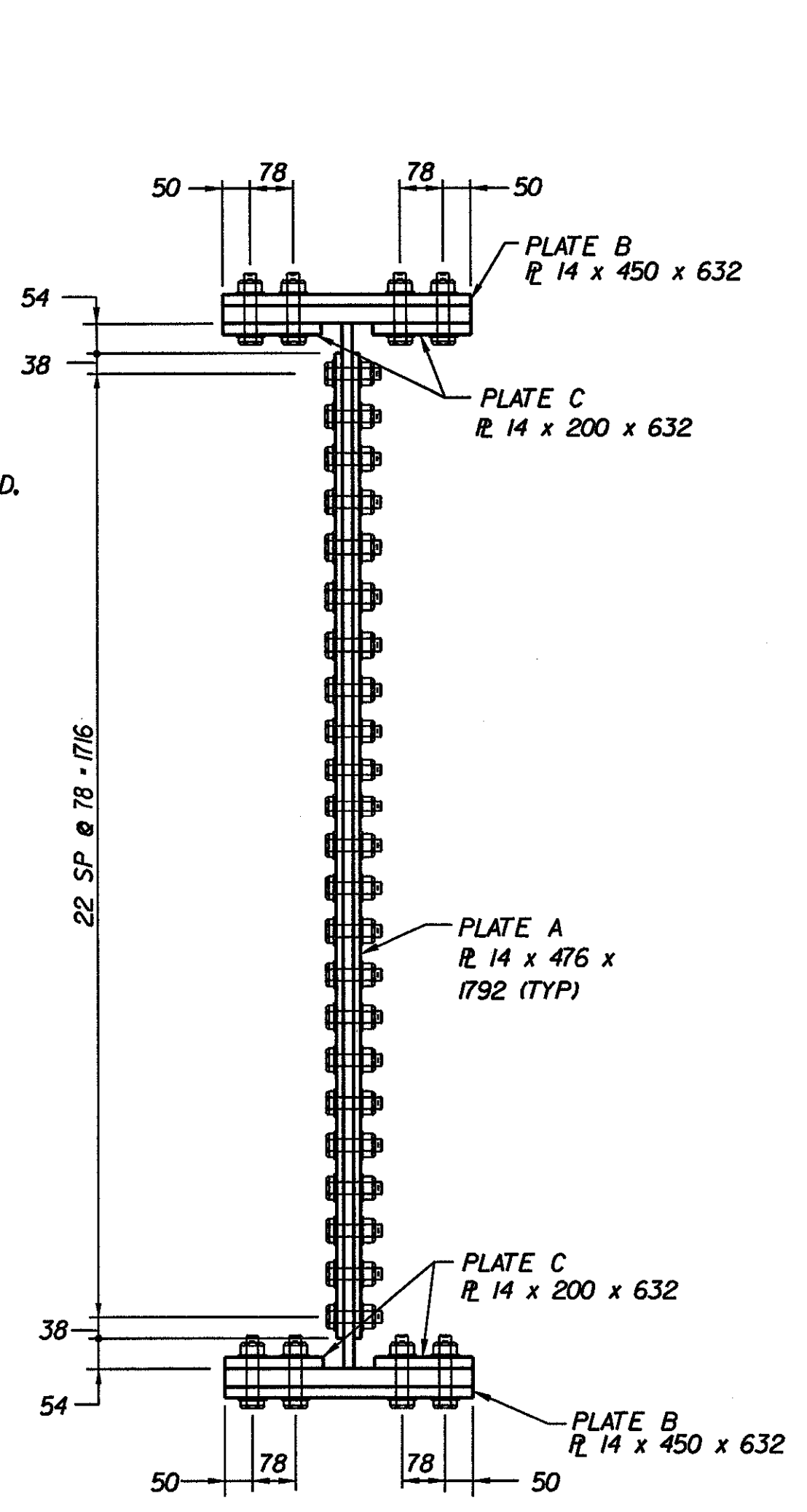
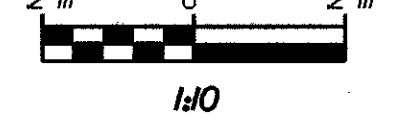
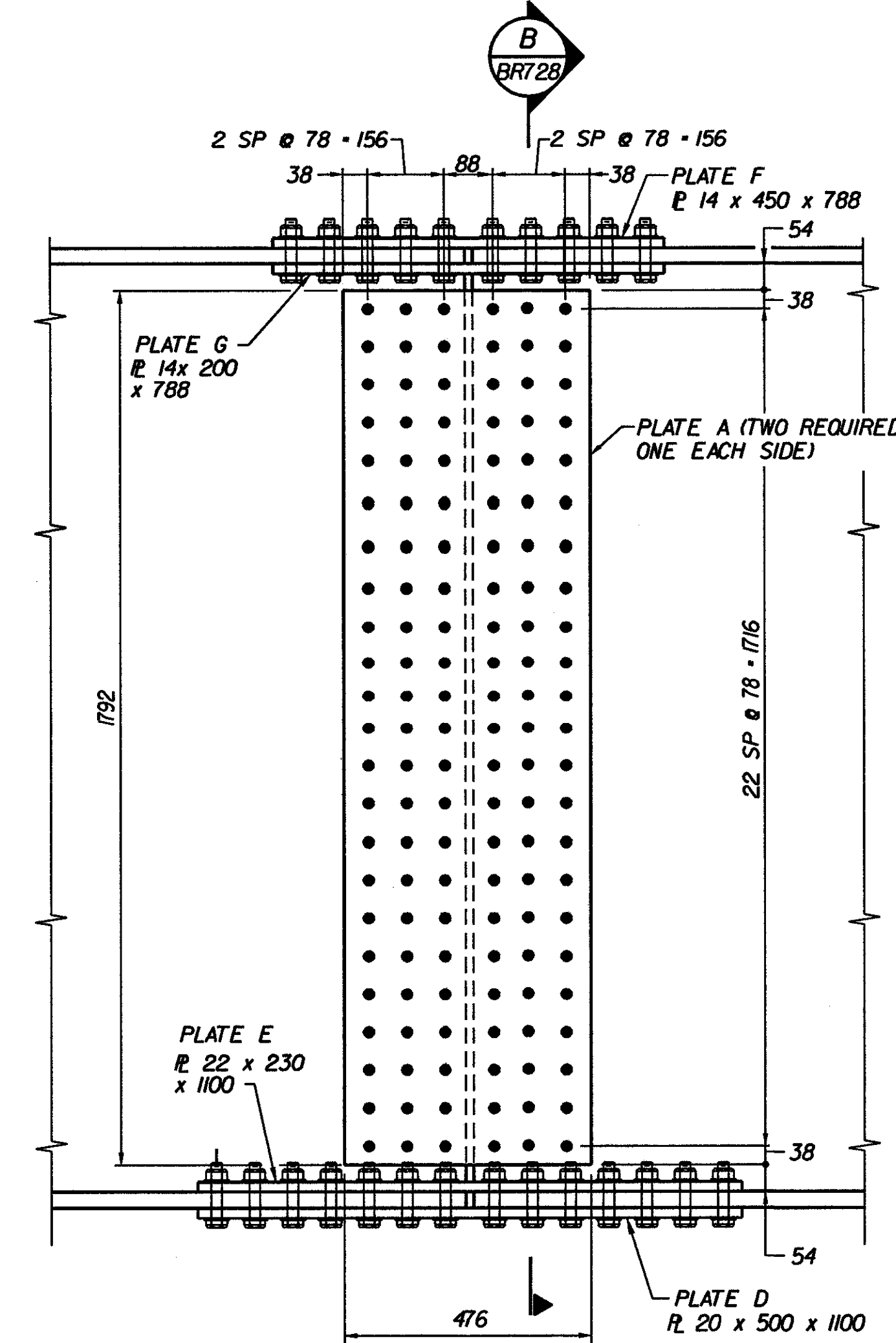
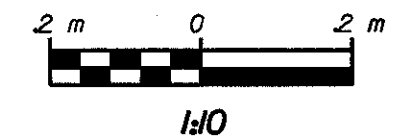


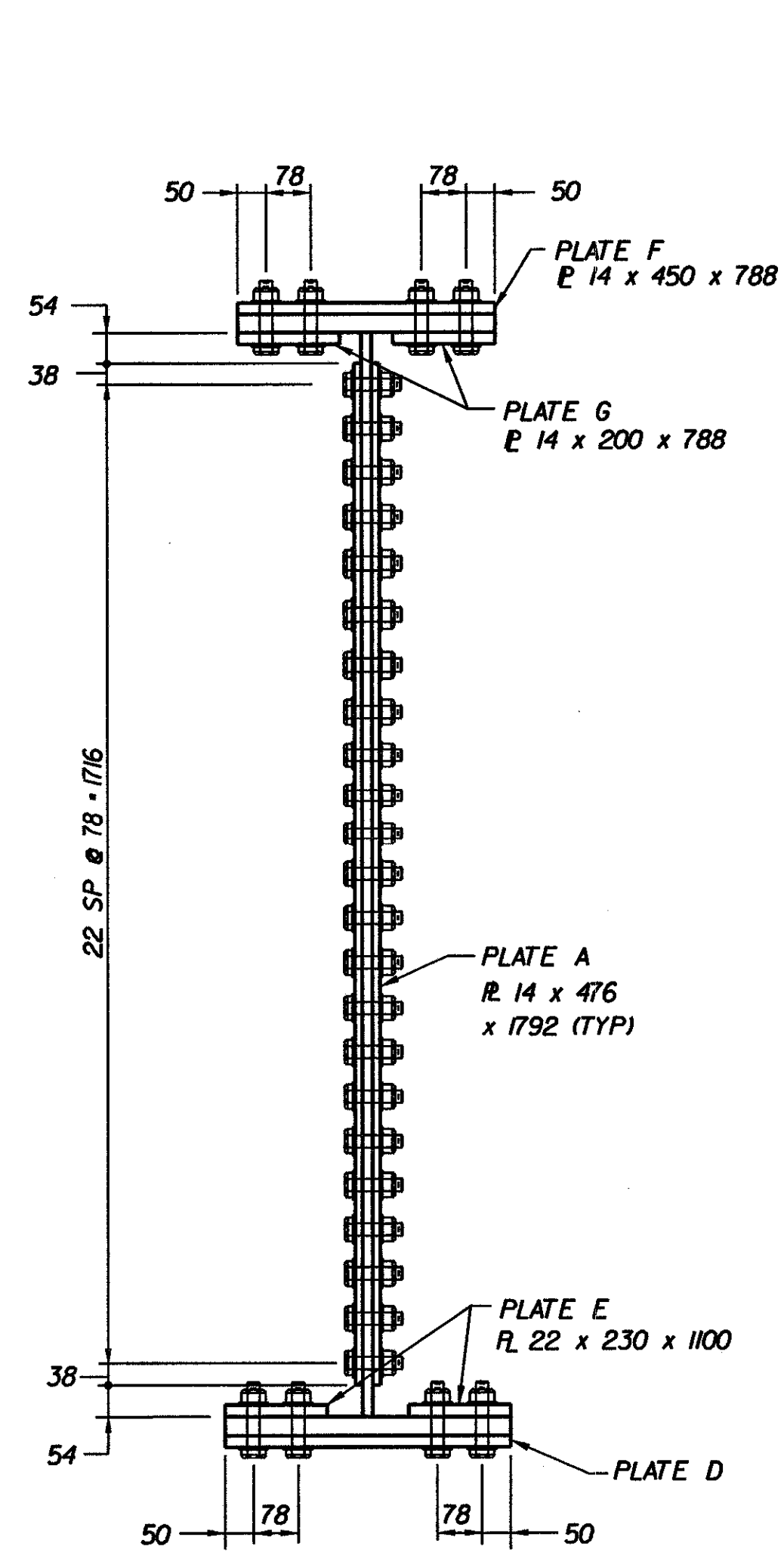
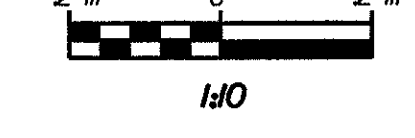
**TYPICAL GIRDER SPLICE ELEVATION  
SPAN 1 THRU SPAN 4**



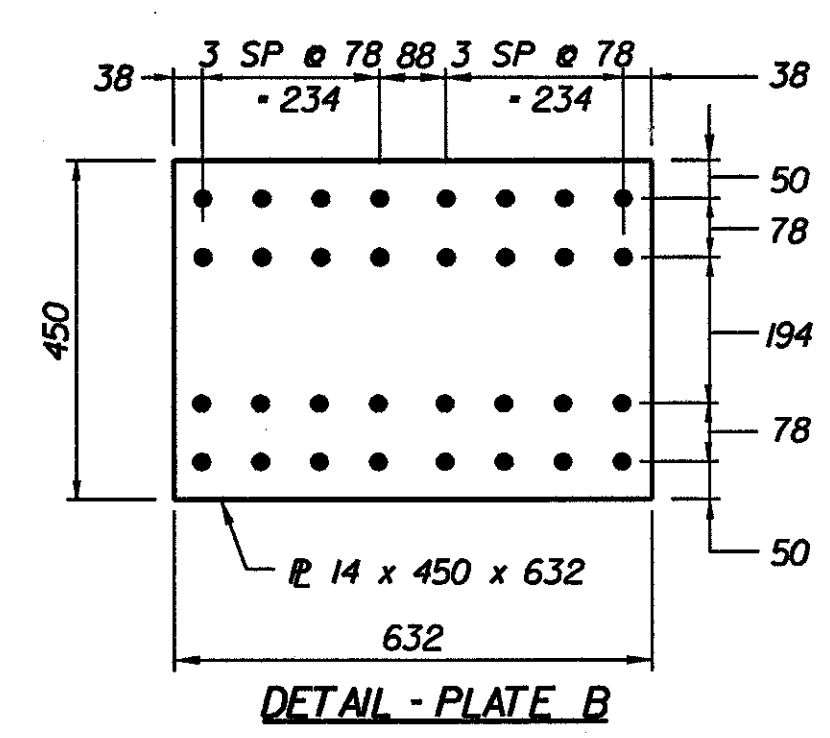
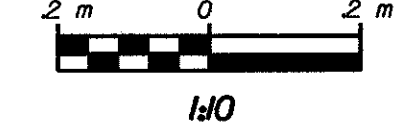
**A GIRDER SPLICE SECTION  
SPAN 1 THRU SPAN 4**



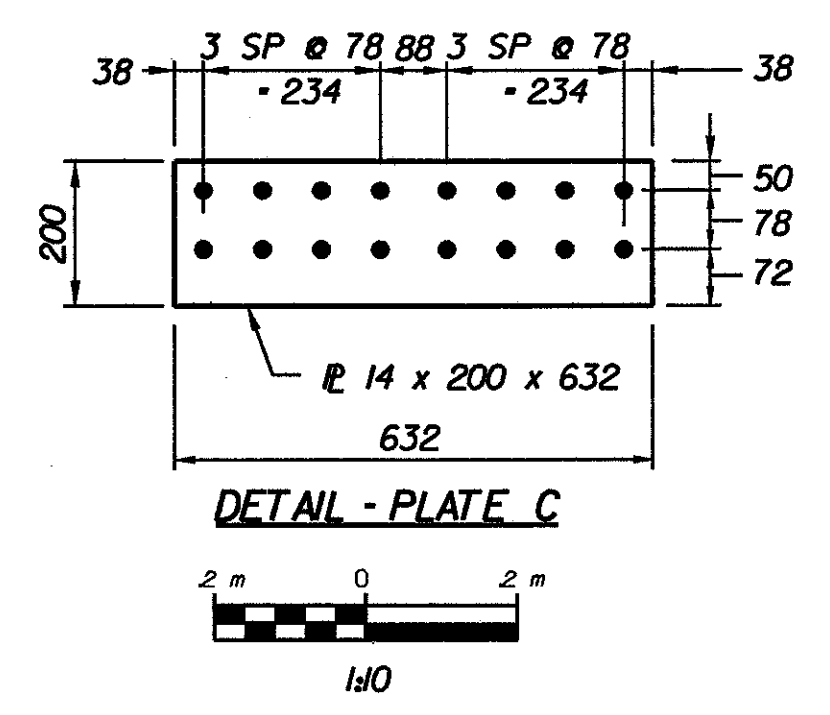
**TYPICAL GIRDER SPLICE ELEVATION  
AT SPAN 5**



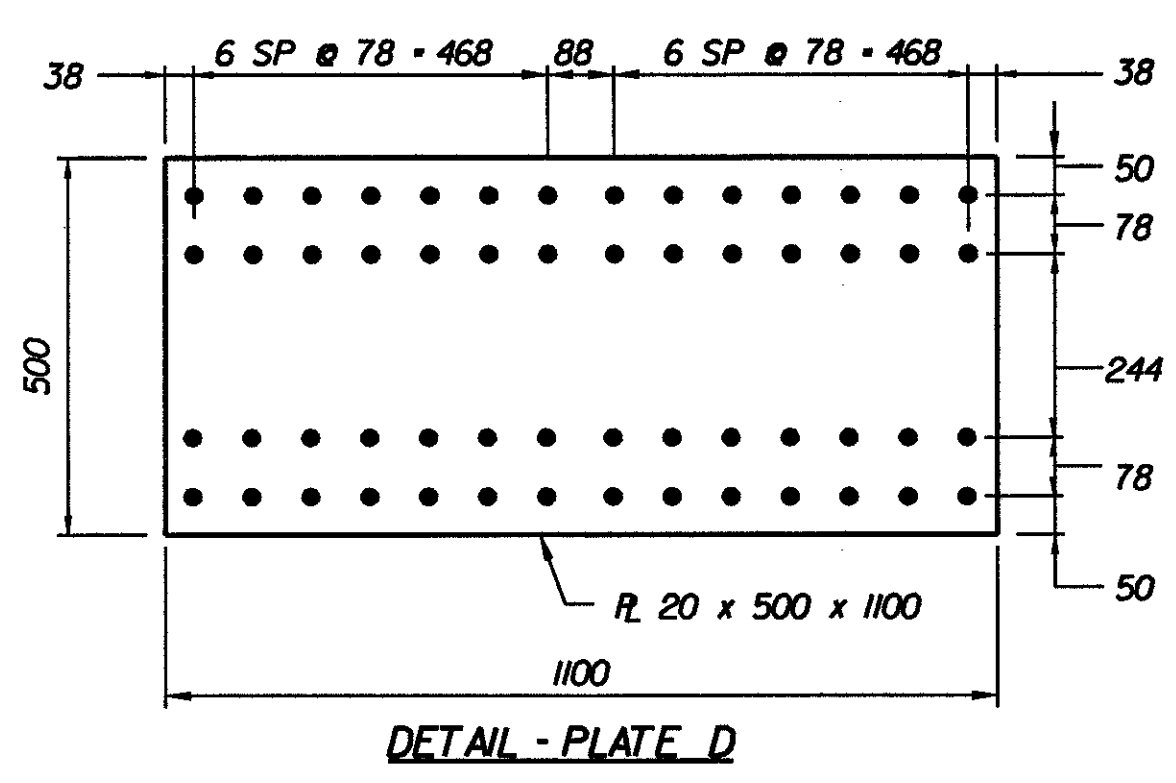
**B GIRDER SPLICE SECTION  
AT SPAN 5**



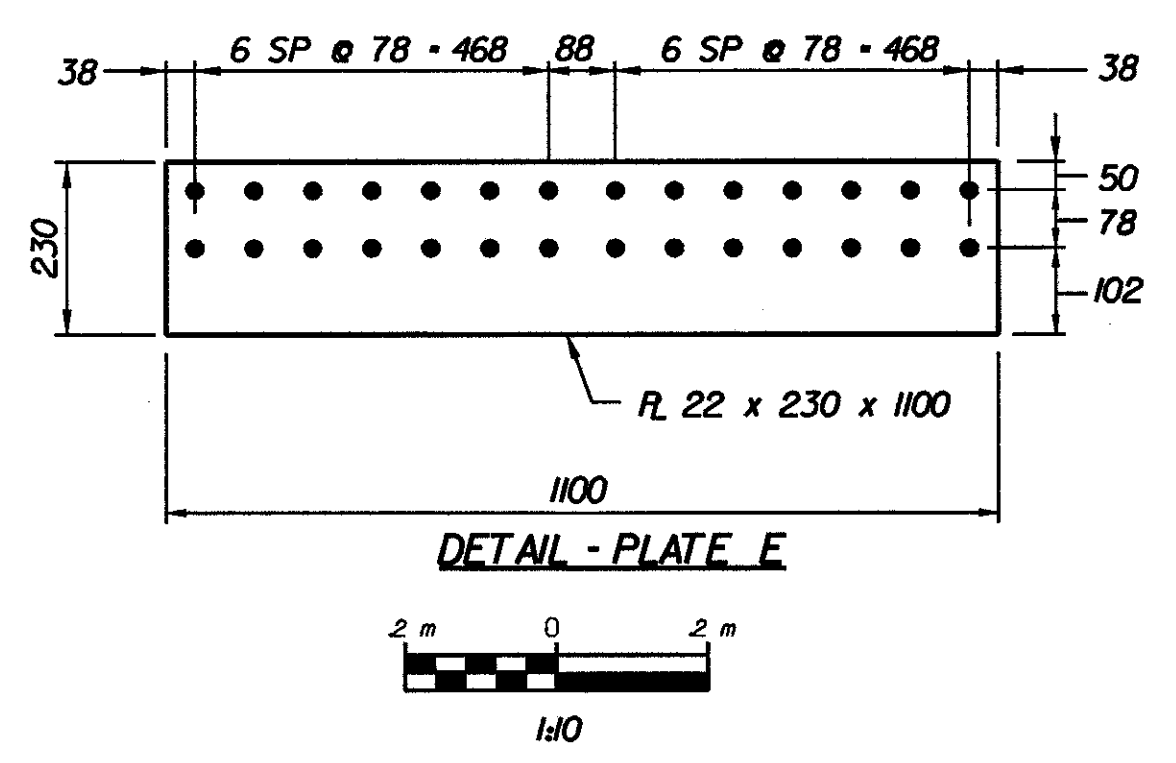
**DETAIL - PLATE B**



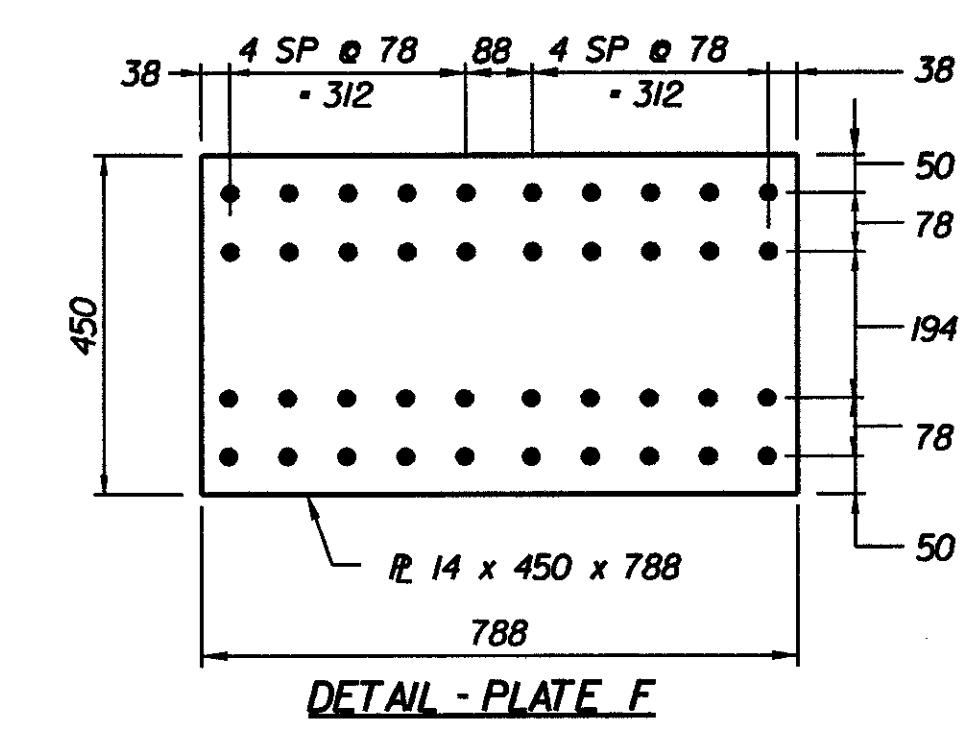
**DETAIL - PLATE C**



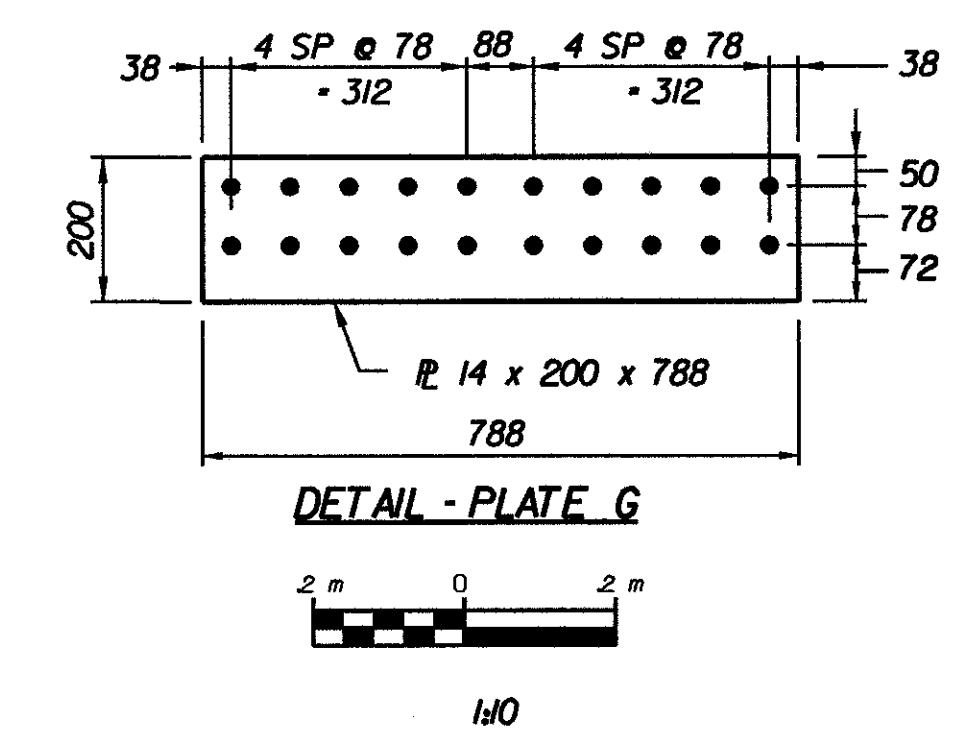
**DETAIL - PLATE D**



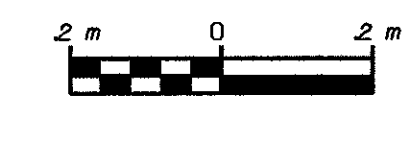
**DETAIL - PLATE E**



**DETAIL - PLATE F**



**DETAIL - PLATE G**



**FIELD SPLICE NOTES:**

- FOR LOCATION OF GIRDER SPLICES SEE BR725.
- ALL BOLTS SHALL BE M22 BOLTS AND SHALL CONFORM TO THE REQUIREMENTS OF AASHTO M164M.
- ALL SPLICE PLATES AND FILLER PLATES SHALL CONFORM TO THE REQUIREMENTS OF AASHTO M270M GR345W STEEL.
- NUTS TO BE ON INSIDE FACE OF WEB SPLICE AT FASCIA GIRDERS.
- NUTS TO BE UP ON ALL FLANGE SPLICES.
- COST OF FIELD SPLICES TO BE INCLUDED IN THE PRICE BID FOR ITEM 50655.
- BOLTED CONNECTIONS SHALL HAVE THREADS EXCLUDED FROM THE SHEAR PLANES.
- CONTACT SURFACES OF BOLTED PARTS SHALL BE CLASS B (SLIP COEF. 0.50).

<b>STATE OF VERMONT AGENCY OF TRANSPORTATION</b>			
Town of	BENNINGTON	Bridge No.	BR700
Highway No.	VT. RTE. 9	Log Sta.	
		Surv. Sta.	16+800
VT. RTE. 9 OVER SILK ROAD AND WALLOOMSAC RIVER			
<b>GIRDER SPLICE DETAILS</b>			
Designed By	D. VIENI	Drawn by	B. WEATHERBY
Checked By	M. SCARDINO	Date	6/00
		Bridge Design Supervisor	M.W. OLSTAD
		Date	9/00
PROJECT	BENNINGTON-HOOSICK	PROJECT NO.	D.P.L. 0146(1) C/4
L.G.C. Info.			
Bridge Sheet No.	BR728	Sheet	211 OF 385

1/25/03/15 BR700 SPL/171/1528/2000/BV/10000