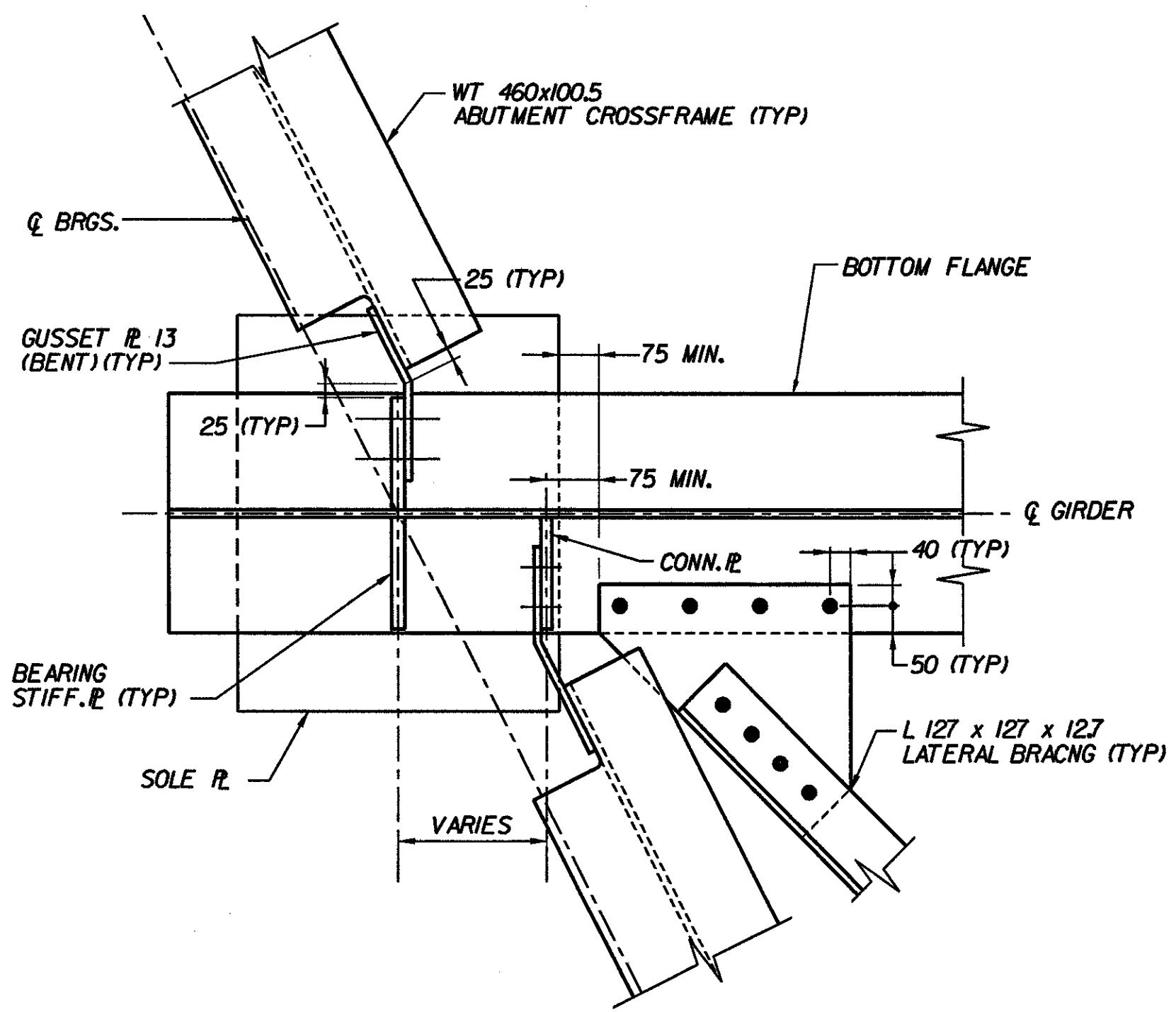
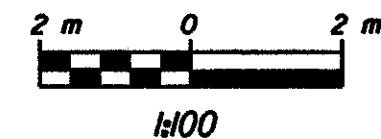


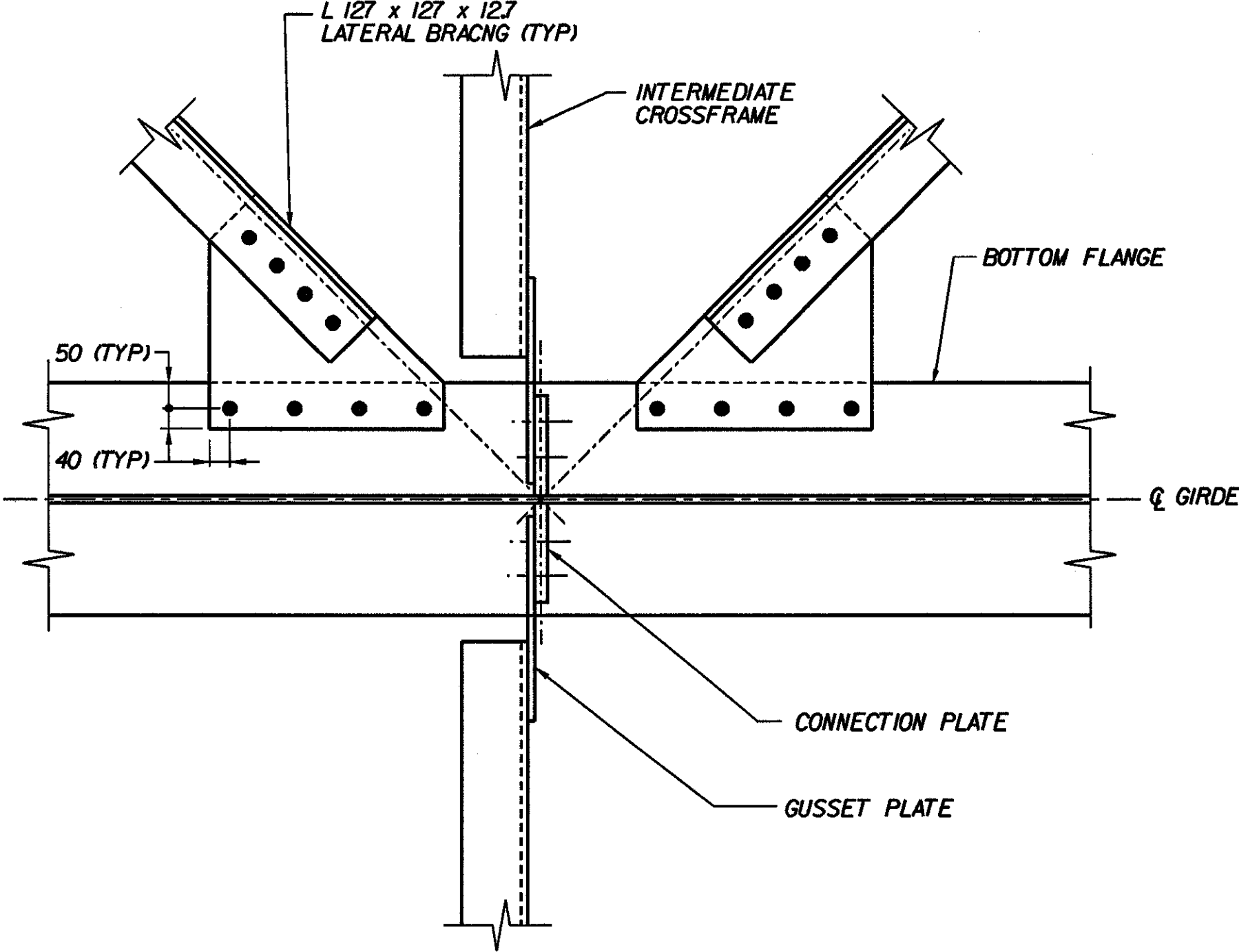
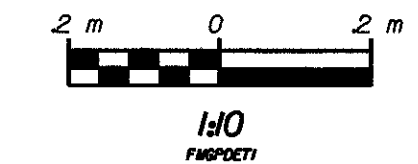
DIAPHRAGM SPACING TABLE	
GIRDER NO.	DIAPHRAGM SPACING (m)
1	6 EQ. SP. = 30.055
2	7 EQ. SP. = 35.136
3	7 EQ. SP. = 35.207
4	7 EQ. SP. = 35.276
5	7 EQ. SP. = 35.347
6	7 EQ. SP. = 35.420
7	7 EQ. SP. = 35.489
8	6 EQ. SP. = 30.479

- NOTES:**
- FOR STRUCTURAL NOTES SEE SHT. BR725.
 - FOR CROSSFRAME DETAILS SEE SHT. BR724.
 - FOR GIRDER ELEVATION AND DETAILS SEE SHT. BR725 & BR726.
 - FOR FRAMING PLANS (SPANS 2 THRU 5) SEE SHT. BR720 THRU BR723.

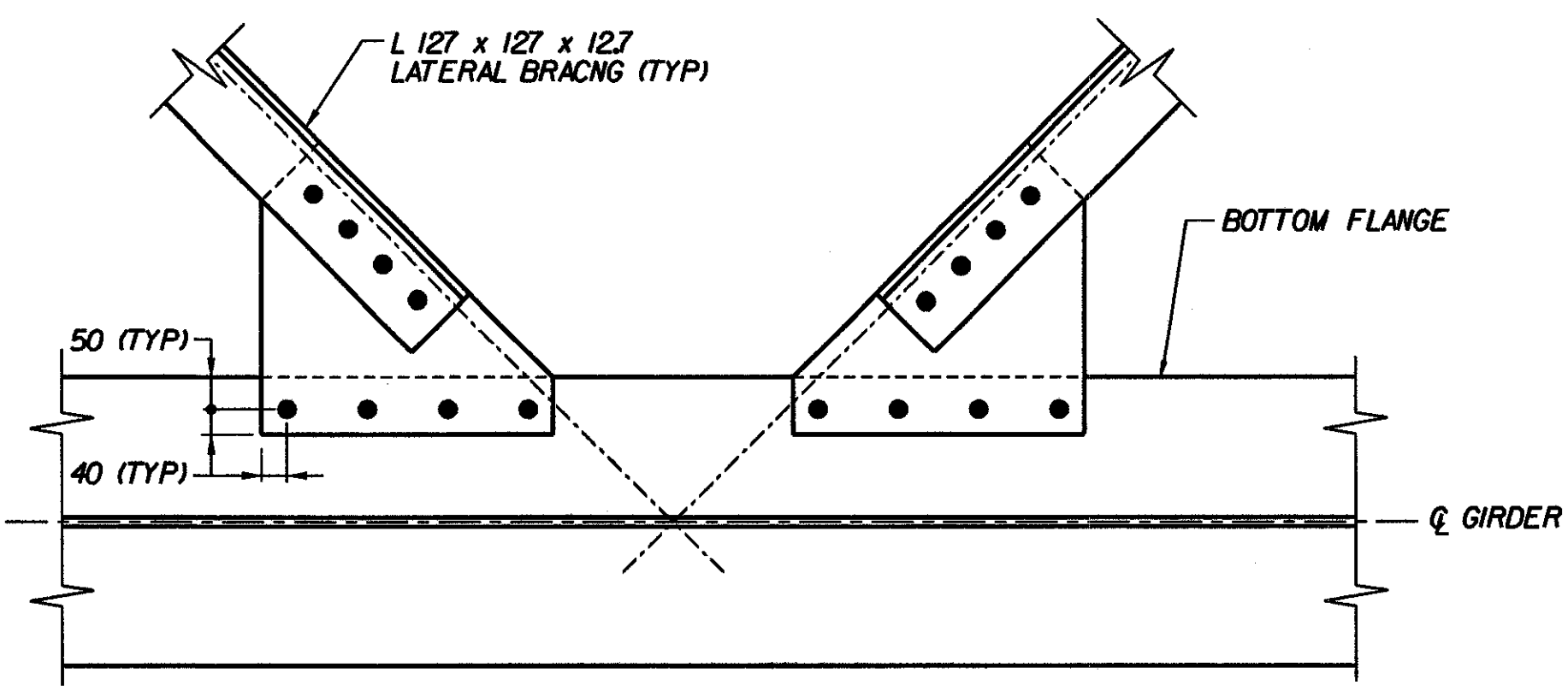
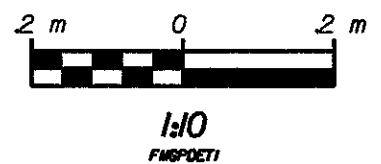
FRAMING PLAN - SPAN I



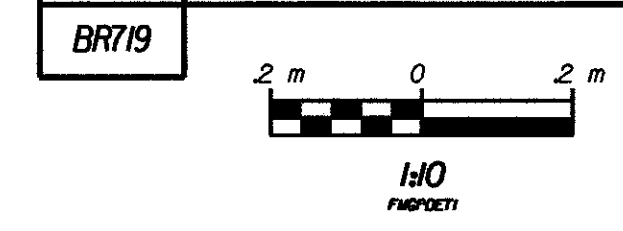
A BEARING STIFFENERS AND BRACING CONNECTIONS
ABUTMENT 1 SHOWN, ABUTMENT 2 & PIERS SIMILAR



B CROSSFRAME & BRACING CONNECTIONS



C LATERAL BRACING CONNECTIONS



**STATE OF VERMONT
AGENCY OF TRANSPORTATION**

Town Of	BENNINGTON	Bridge No.	BR700
Highway No.	VT. RTE. 9	Log Sta.	
		Surv. Sta.	16+800
VT. RTE. 9 OVER SILK ROAD AND WALLOOMSAC RIVER			
FRAMING PLAN - SPAN I			
Designed By	D. VIEN	Drawn by	B. WEATHERBY
Checked By	M. SCARDINO	Date	6/00
		Bridge Design Supervisor	M.W. OLSTAD
		Date	9/00
PROJECT	BENNINGTON-HOOSICK	PROJECT NO.	D.P.I. 014611 C/4
I.G.C. Info.			
Bridge Sheet No.	BR719	Sheet	202 OF 385