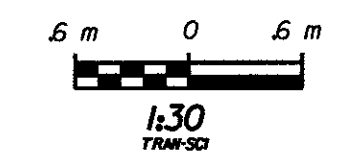


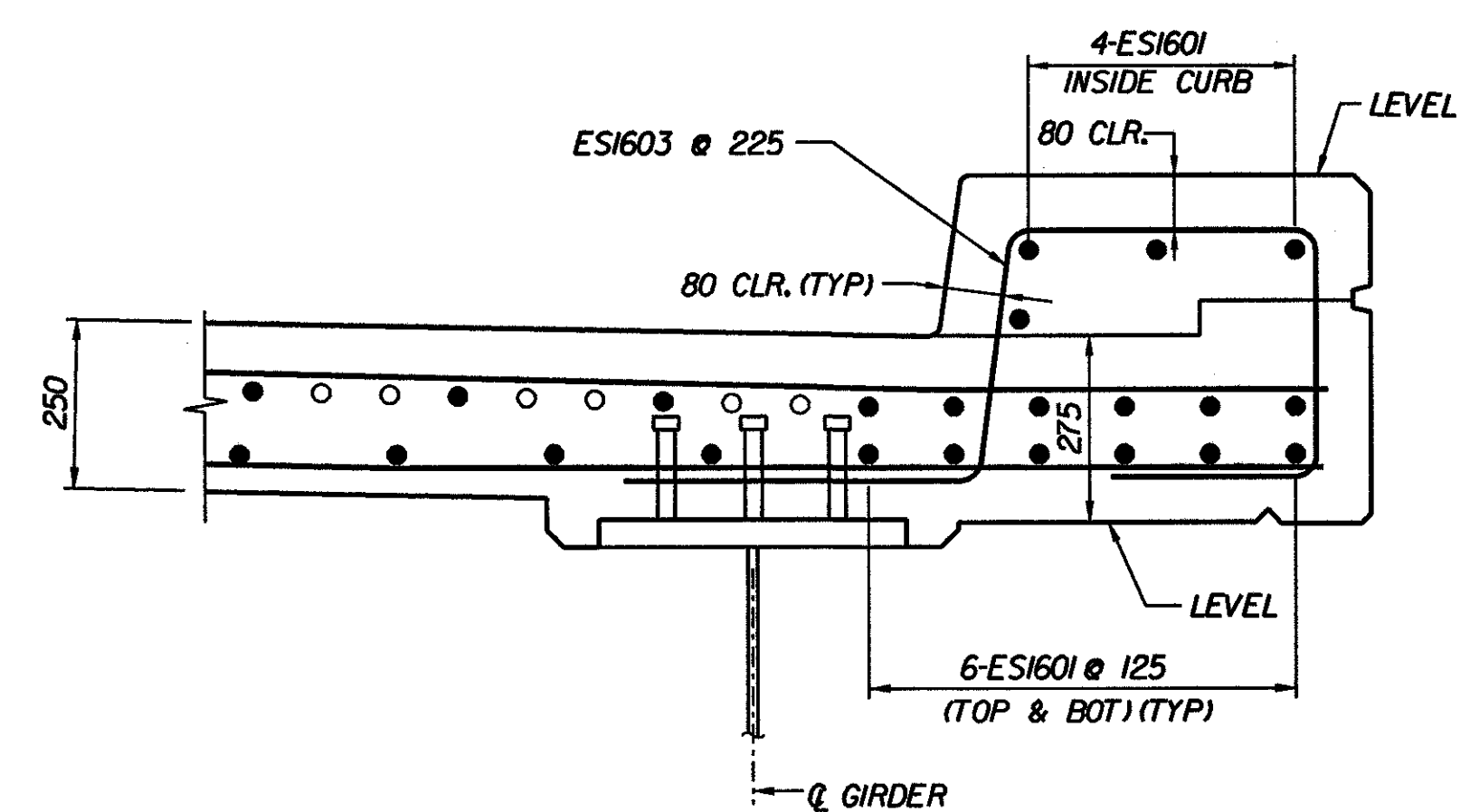
TYPICAL TRANSVERSE BRIDGE SECTION (TO STA. 16+978.085)

\*DIMENSIONS SHOWN ARE VALID UP TO STA. 16+972.194 AND VARY BETWEEN STA. 16+972.194 AND STA. 16+978.085

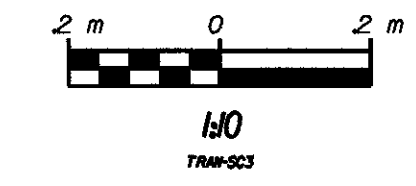


NOTES:

1. ALL SUPERSTRUCTURE REINFORCING STEEL SHALL BE EPOXY COATED.
2. SEE TYPICAL CURB SECTIONS ON SHEET BR738.
3. A TRANSITION FROM 0.036 DN LT TO 0.007 DN LT BEGINS AT STATION 16+932.889 FOR THE EASTBOUND DECELERATION LANE FOR RAMP C. THE CROSS-SLOPE TRANSITIONS TO 0.007 DN LT AT THE EQUALITY ROUTE 9 STATION 16+978.085 - RAMP C STATION 16+000.000.



FASCIA SECTION



STATE OF VERMONT  
AGENCY OF TRANSPORTATION

Town Of	BENNINGTON	Bridge No.	BR700
Highway No.	VT. RTE. 9	Log Sta.	
		Surv. Sta.	16+800
VT. RTE. 9 OVER SILK ROAD AND WALLOOMSAC RIVER			
TYPICAL TRANSVERSE BRIDGE SECTIONS - I			
Designed By	M. GOGUEN	Drawn by	B. WEATHERBY
Checked By	D. VIEN	Date	6/00
		Bridge Design Supervisor	M.W. OLSTAD
		Date	9/00
PROJECT	BENNINGTON-HOOSICK		PROJECT NO.
			D.P.L. 0146(i) C/4
I.G.C. Info.			
Bridge Sheet No.	BR714	Sheet	197 OF 385