

613.II STONE FILL, TYPE II
 STA. CDIO+158.4 - STA. CDIO+164.4 RT 42 m³ (1,480 CF)
 STA. CDIO+200.0 RT 33 m³ (1,160 CF)

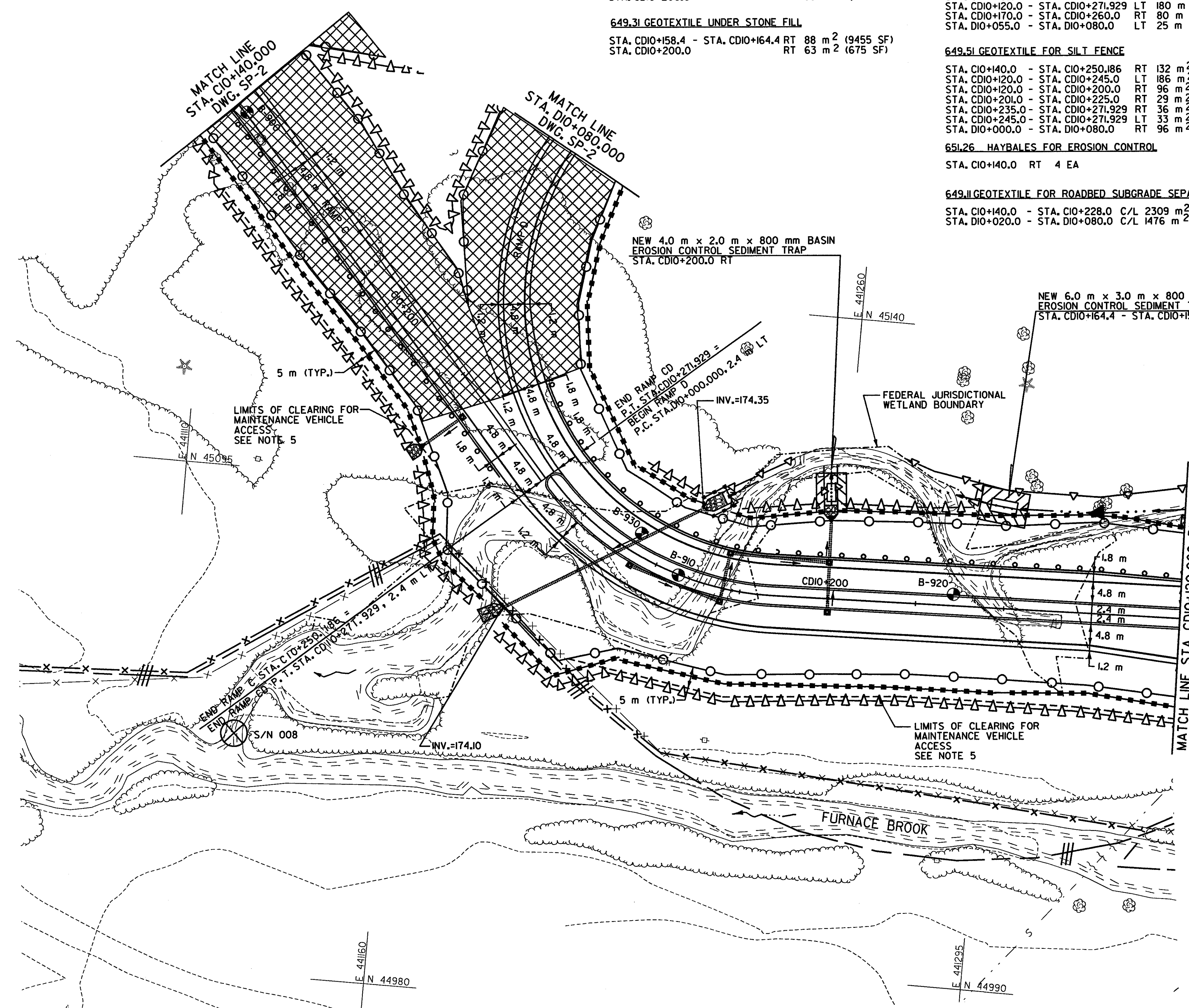
649.3I GEOTEXTILE UNDER STONE FILL
 STA. CDIO+158.4 - STA. CDIO+164.4 RT 88 m² (9455 SF)
 STA. CDIO+200.0 RT 63 m² (675 SF)

620.70 SNOW FENCE (MOD.)
 STA. CIO+140.0 - STA. CIO+194.0 LT 54 m (177 FT)
 STA. CIO+140.0 - STA. CIO+250.186 RT 85 m (279 FT)
 STA. CDIO+120.0 - STA. CDIO+271.929 LT 180 m (591 FT)
 STA. CDIO+170.0 - STA. CDIO+260.0 RT 80 m (263 FT)
 STA. DIO+055.0 - STA. DIO+080.0 LT 25 m (82 FT)

649.5I GEOTEXTILE FOR SILT FENCE
 STA. CIO+140.0 - STA. CIO+250.186 RT 132 m² (1,421 SF)
 STA. CDIO+120.0 - STA. CDIO+245.0 LT 186 m² (2,002 SF)
 STA. CDIO+120.0 - STA. CDIO+200.0 RT 96 m² (1,034 SF)
 STA. CDIO+201.0 - STA. CDIO+225.0 RT 29 m² (310 SF)
 STA. CDIO+235.0 - STA. CDIO+271.929 RT 36 m² (388 SF)
 STA. CDIO+245.0 - STA. CDIO+271.929 LT 33 m² (349 SF)
 STA. DIO+000.0 - STA. DIO+080.0 RT 96 m² (1,034 SF)

651.26 HAYBALES FOR EROSION CONTROL
 STA. CIO+140.0 RT 4 EA

649.II GEOTEXTILE FOR ROADBED SUBGRADE SEPARATOR
 STA. CIO+140.0 - STA. CIO+228.0 C/L 2309 m² (24,822 SF)
 STA. DIO+020.0 - STA. DIO+080.0 C/L 1476 m² (15,888 SF)



LEGEND	
DESCRIPTION	SYMBOL
HAY/STRAWBALE CHECK DAM	
STONE CHECK DAM	
HAY/STRAWBALE (HAYBALE DIKE)	
SILT FENCE	
SILT FENCE FOR CULVERT INLET PROTECTION	
SNOW FENCE (MOD.)	
COFFERDAM/STREAM DIVERSION DAM	
TEMPORARY CONSTRUCTION ACCESS / WORK AREAS	
EROSION CONTROL SEDIMENT TRAP	
GEOTEXTILE FABRIC	

- GENERAL NOTES:**
1. SLOPES WILL BE SEEDED AND MULCHED AS SOON AS PRACTICABLE.
 2. WHERE STONE FILL IS SHOWN AT STREAM LOCATIONS IT SHALL BE PLACED CONCURRENT WITH EXCAVATION / FILLING OPERATIONS.
 3. SILT FENCE SHALL BE INSTALLED IN FILL AREAS PRIOR TO COMMENCING FILL OPERATIONS. WHERE SILT FENCE IS SHOWN AT THE TOP OF STONE FILL, NO FILL SHALL BE PLACED ABOVE THE STONE FILL ELEVATION UNTIL THE SILT FENCE IS INSTALLED.
 4. SILT FENCE MAY BE USED IN LIEU OF HAY BALE CHECK DAMS IN DITCHES AND AT DROP INLET LOCATIONS AS DIRECTED BY THE RESIDENT ENGINEER.
 5. THE CONTRACTOR SHALL REMOVE ALL TREES AND CUT ALL STUMPS FLUSH TO THE GROUND WITHIN 5 m OF THE EARTHWORK LIMITS IN THIS VICINITY. THIS WILL FACILITATE MAINTENANCE VEHICLE ACCESS TO THE UTILITY LINES THAT ARE NOT IMMEDIATELY ADJACENT TO THE PROPOSED CONSTRUCTION.

NOTE:
 ADDITIONAL CONTROLS AND PROTECTION OF THE ENVIRONMENT NOT SHOWN ON THE PLANS MAY BE WARRANTED DURING CONSTRUCTION AND SHALL BE INCORPORATED INTO THE PROJECT AS REQUIRED AS DIRECTED BY THE RESIDENT ENGINEER.

FILE NAME = ut\5116\vaot\cont-act4\vtspi7.dgn
 DATE/TIME = 08 SEP 2000
 USER = 1459

DATUM	
VERTICAL	NAVD 88
HORIZONTAL	NAD 83 (1992)

STORMWATER MANAGEMENT PLAN	SURVEYED BY	C.H.A. & V.S.E.	DATE	12/93
	DESIGNED BY	D.E.G.	DATE	9/00
	DRAWN BY	C.A.K.	DATE	9/00
	CHECKED BY	T.P.K.	DATE	9/00
	DESIGN FILE NO.	5116/vaot/vtspi7.dgn		
	PROJ. NAME	BENNINGTON - HOOSICK D.P.L. 0146(1) C/4		
	PROJ. NO.	P.J.N. 1306.60		
	DWG NO. SP-4	SHEET 121 OF 385		