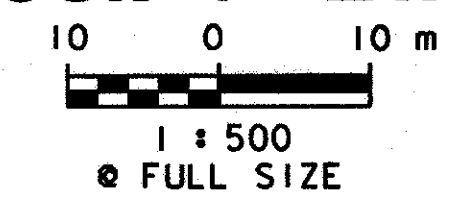
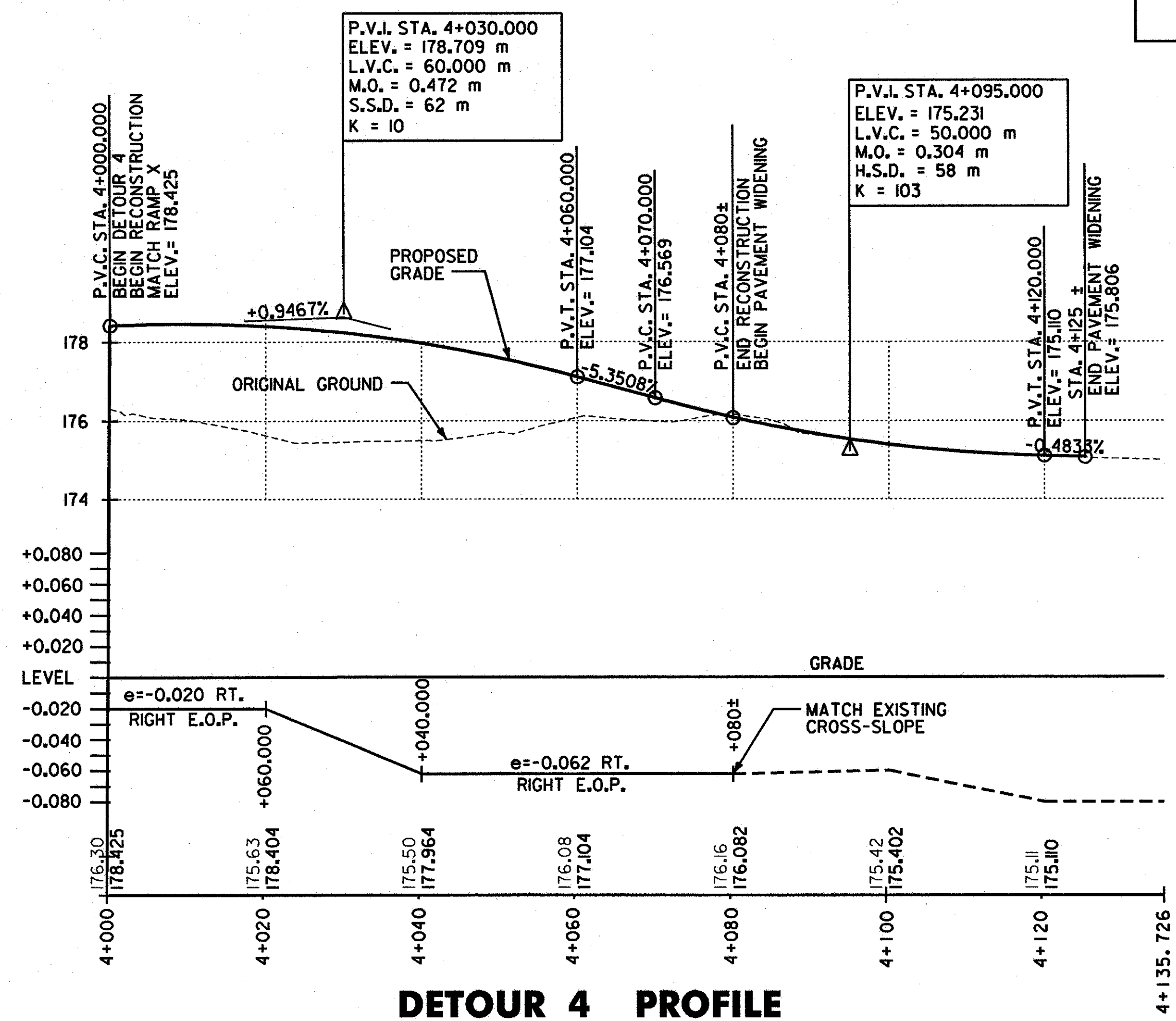


DETOUR 4 LAYOUT

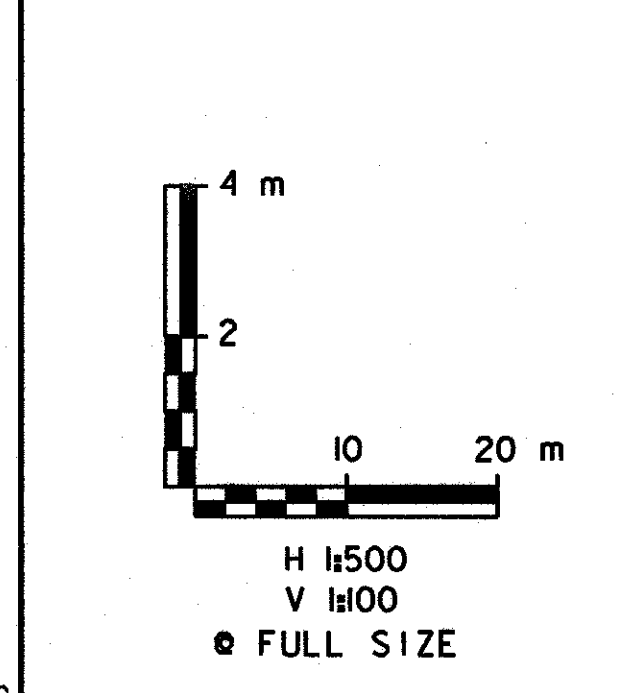


LEGEND

TEMPORARY CONSTRUCTION



DETOUR 4 PROFILE

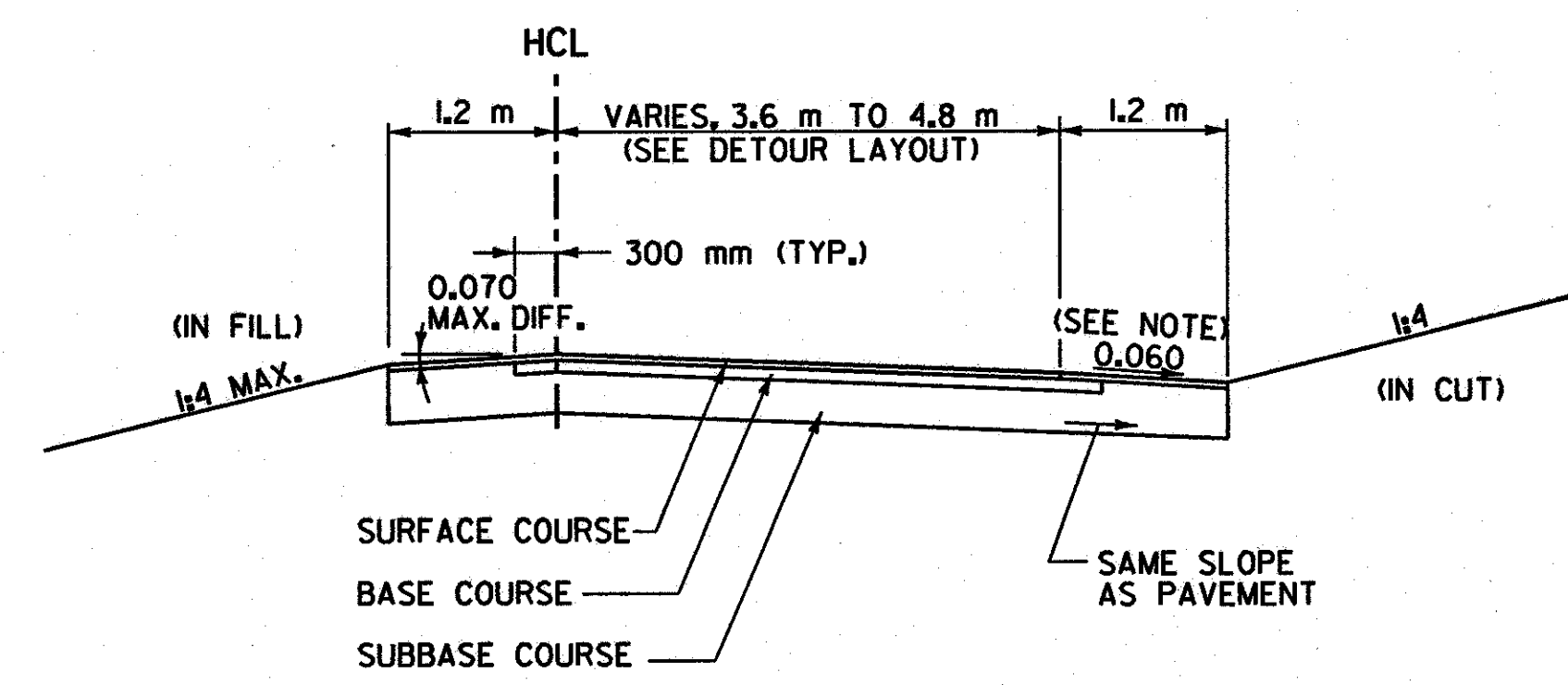


DATUM

VERTICAL	NAVD 88
HORIZONTAL	NAD 83 (1992)

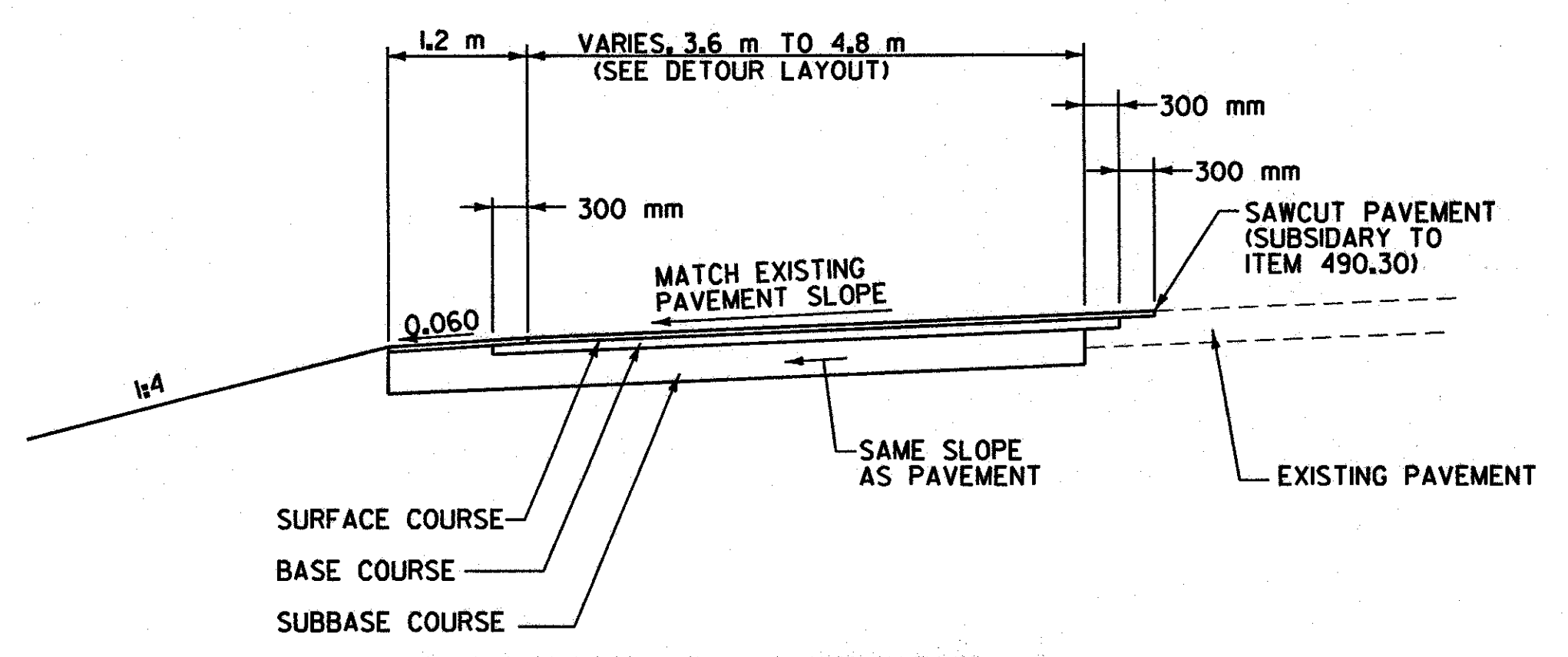
TYPICAL SECTIONS - DETOUR 3 AND DETOUR 4

- 50 SUPERPAVE BITUMINOUS CONCRETE PAVEMENT (PG 58-28) TYPE III S
- 100 BASE COURSE, SUPERPAVE BITUMINOUS CONCRETE PAVEMENT (PG 58-28) TYPE IS
- 300 SUBBASE OF CRUSHED GRAVEL (COARSE GRADED)



DETOUR 3 / DETOUR 4 TYPICAL RECONSTRUCTION SECTION

N.T.S.
NOTE: WHERE BANKING IS GREATER THAN 0.060 DOWN RIGHT, THE RIGHT SHOULDER SLOPE SHALL MATCH ADJACENT PAVEMENT SLOPE.



DETOUR 3 / DETOUR 4 TYPICAL WIDENING SECTION

N.T.S.

CONSTRUCTION SEQUENCING PHASE 3

SURVEYED BY	C.H.A. & V.S.E.	DATE	12/93
DESIGNED BY	T.Y.B.	DATE	9/00
DRAWN BY	K.H.D.	DATE	9/00
CHECKED BY	T.P.K.	DATE	9/00
DESIGN FILE NO.	5116/VAOT/CSP/CSP-6.DGN		
PROJ. NAME	BENNINGTON - HOOSICK D.P.I. 014611 C/4		
PROJ. NO.	P.I.N 1306.60		
DWG NO.	CSP-8	SHEET	105 OF 385

FILE NAME = u:\5116\vaot\contract4\csp\csp-6.dgn
DATE/TIME = 07 SEP 2000
USER = 1459