



620.J2 CHAIN-LINK FENCE, 1.8 m

STA. CIO+140.000	- STA. CIO+163.300	RT (21.6 m)
STA. CIO+163.300	- STA. CIO+181.300	RT (31.0 m)
STA. CIO+181.300	- STA. CIO+194.300	RT (14.5 m)
STA. CIO+194.300	- STA. CIO+208.900	RT (17.5 m)
STA. CIO+208.900	- STA. CIO+239.000	RT (47.3 m)
STA. CIO+239.000	- STA. CIO+247.200	RT (65.1 m)
STA. CIO+247.200	- STA. CIO+250.186	RT (3.0 m)
STA. CDIO+110.000	- STA. CDIO+125.400	LT (17.4 m)
STA. CDIO+125.400	- STA. CDIO+227.500	LT (111.7 m)
STA. CDIO+227.500	- STA. CDIO+271.929	LT (66.5 m)

620.21 BRACING ASSEMBLY FOR CHAIN-LINK FENCE, 1.8 m

STA. CIO+163.300	RT (1EA)
STA. CIO+181.300	RT (1EA)
STA. CIO+194.300	RT (1EA)
STA. CIO+208.900	RT (1EA)
STA. CIO+239.000	RT (1EA)
STA. CIO+247.200	RT (1EA)
STA. CDIO+125.400	LT (1EA)
STA. CDIO+227.500	LT (1EA)

620.55 REMOVAL OF EXISTING FENCE

STA. CIO+140.000	- STA. CIO+250.186	RT (202.4 m)
STA. CDIO+110.000	- STA. CDIO+271.929	LT (193.8 m)

616.20 GRANITE SLOPE EDGING

STA. CDIO+110.0	- STA. CDIO+271.9	LT (161.9 m)
STA. CDIO+110.0	- STA. CDIO+271.9	RT (161.9 m)

616.26 PRECAST REINFORCED CONCRETE CURB, TYPE B OR 616.28 CAST-IN-PLACE CEMENT CONCRETE CURB, TYPE B

STA. CDIO+110.0	- STA. CDIO+120.0	RT (10.0 m)
-----------------	-------------------	-------------

616.35 TREATED TIMBER CURB

STA. CDIO+120.0	- STA. CDIO+271.9	RT (151.9 m)
STA. CIO+140.0	- STA. CIO+229.1	RT (89.1 m)
STA. DIO+000.0	- STA. DIO+018.8	RT (18.8 m)

621.52 MANUFACTURED TERMINAL SECTION

STA. CIO+239.5	- STA. CIO+243.9	RT (1EA)
STA. DIO+015.0	- STA. DIO+019.4	RT (1EA)

621.20 STEEL BEAM GUARDRAIL

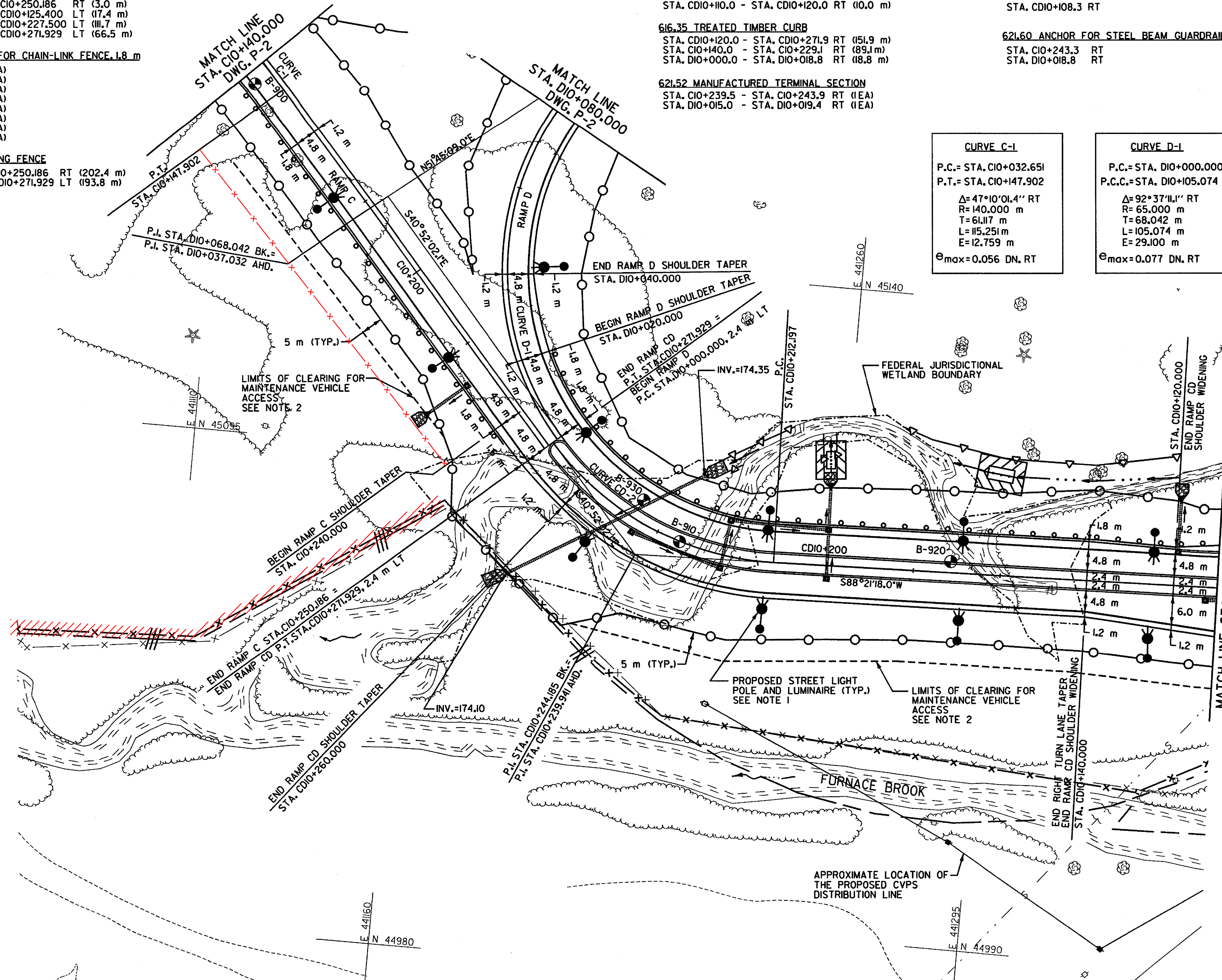
STA. CDIO+119.7	- STA. CDIO+271.9	RT (152.2 m)
STA. CIO+140.0	- STA. CIO+239.5	RT (99.5 m)
STA. DIO+000.0	- STA. DIO+015.0	RT (15.0 m)

621.505 MANUFACTURED TERMINAL SECTION (FLARED)

STA. CDIO+108.3	RT
-----------------	----

621.60 ANCHOR FOR STEEL BEAM GUARDRAIL

STA. CIO+243.3	RT
STA. DIO+018.8	RT

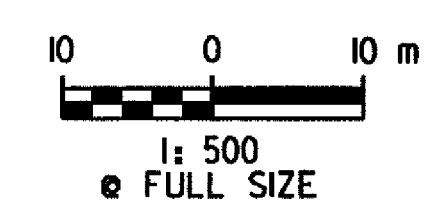


CURVE C-1	CURVE D-1	CURVE CD-2
P.C. = STA. CIO+032.651	P.C. = STA. DIO+000.000	P.C. = STA. CDIO+212.197
P.T. = STA. CIO+147.902	P.C.C. = STA. DIO+105.074	P.T. = STA. CDIO+271.929
$\Delta = 47^{\circ}10'01.4''$ RT	$\Delta = 92^{\circ}37'11.1''$ RT	$\Delta = 50^{\circ}46'39.9''$ RT
R = 140.000 m	R = 65.000 m	R = 67.400 m
T = 61.117 m	T = 68.042 m	T = 31.988 m
L = 115.251 m	L = 105.074 m	L = 59.732 m
E = 12.759 m	E = 29.100 m	E = 7.206 m
$e_{max} = 0.056$ DN, RT	$e_{max} = 0.077$ DN, RT	$e_{max} = 0.077$ DN, RT

- NOTES:**
- SEE DWG. NO. SLP-1 TO SLP-3 FOR PROPOSED STREET LIGHTING PLANS.
 - THE CONTRACTOR SHALL REMOVE ALL TREES AND CUT ALL STUMPS FLUSH TO THE GROUND WITHIN 5 m OF THE EARTHWORK LIMITS IN THIS VICINITY. THIS WILL FACILITATE MAINTENANCE VEHICLE ACCESS TO THE UTILITY LINES THAT ARE NOT IMMEDIATELY ADJACENT TO THE PROPOSED CONSTRUCTION.

DATUM

VERTICAL	NAVD 88
HORIZONTAL	NAD 83 (1992)



PLAN

SURVEYED BY	C.H.A. & V.S.E.	DATE	12/93
DESIGNED BY	D.E.G.	DATE	9/00
DRAWN BY	J.S.L.	DATE	9/00
CHECKED BY	T.P.K.	DATE	9/00
DESIGN FILE NO.	516/vaot/vtp24.dgn		
PROJ. NAME	BENNINGTON - HOOSICK D.P.I. 0146(1) C/4		
PROJ. NO.	P.I.N. 1306.60		
DWG NO. P-4	SHEET 82 OF 385		

FILE NAME = u:\5116\vaot\contract4\vt24.dgn
DATE/TIME = 08 SEP 2000
USER = 1459