

**CURVE D-2**  
 P.C.= STA. D10+105.074  
 P.T.= STA. D10+157.346  
 $\Delta=33^{\circ}16'39.0''$  RT  
 R= 90.000 m  
 T= 26.896 m  
 L= 52.272 m  
 E= 3.933 m  
 $e_{max}=0.069$  DN, RT

**CURVE X-1**  
 P.C.= STA. X10+236.136  
 P.T.= STA. X10+320.871  
 $\Delta=06^{\circ}56'08.5''$  LT  
 R= 700.000 m  
 T= 42.420 m  
 L= 84.735 m  
 E= 1.284 m  
 $e_{max}=0.063$  DN, LT

**CURVE 67A-1**  
 P.C.= STA. 60+663.832  
 P.T.= STA. 60+870.830  
 $\Delta=27^{\circ}09'52.9''$  RT  
 R= 436.600 m  
 T= 105.482 m  
 L= 206.998 m  
 E= 12.562 m  
 $e_{max}=N/A$

**616.26 PRECAST REINFORCED CONCRETE CURB, TYPE B OR 616.28 CAST-IN-PLACE CEMENT CONCRETE CURB, TYPE B**  
 STA. 60+870.0 - STA. 60+915.0 LT (45.4 m)  
 STA. 61+030.3 - STA. 61+040.0 LT (9.7 m)

**604.42 CHANGING ELEVATION OF SEWER MANHOLE**  
 STA. 60+899.6 LT  
 STA. 61+013.8 LT

**616.47 BITUMINOUS CONCRETE GUTTERS AND TRAFFIC ISLANDS**  
 STA. B10+053.1 - STA. B10+073.2 LT (4.4 m)  
 STA. B10+060.6 - STA. B10+073.2 LT (3.1 m)

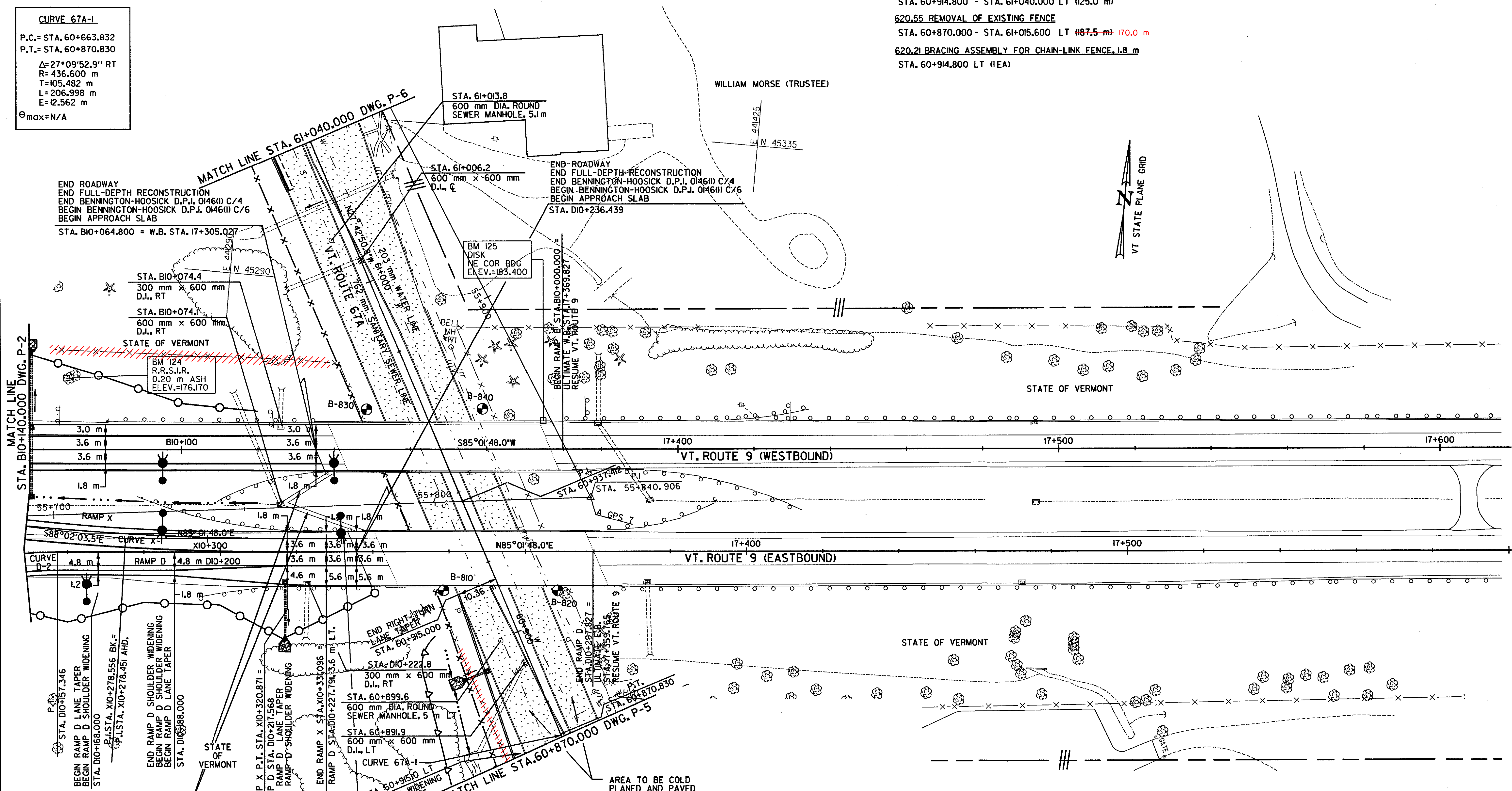
**621.75 REMOVING AND RESETTING GUARDRAIL**  
 STA. B10+059.4 - STA. B10+091.7 LT (32.3 m)  
 STA. B10+065.7 - STA. B10+119.3 RT (53.6 m)  
 STA. D10+194.8 - STA. D10+243.7 RT (48.9 m) 24.45 m  
 STA. D10+227.8 - STA. D10+237.5 LT (9.7 m)  
 STA. X10+281.1 - STA. X10+331.1 LT (50.0 m)

**616.41 REMOVAL OF EXISTING CURB**  
 STA. 60+870.0 - STA. 60+915.0 LT (45.0 m)  
 STA. 61+030.3 - STA. 61+040.0 LT (9.7 m)

**620.12 CHAIN-LINK FENCE, 1.8 m**  
 STA. 60+870.000 - STA. 60+914.800 LT (44.0 m)  
 STA. 60+914.800 - STA. 61+040.000 LT (125.0 m)

**620.55 REMOVAL OF EXISTING FENCE**  
 STA. 60+870.000 - STA. 61+015.600 LT (87.5 m) 170.0 m

**620.21 BRACING ASSEMBLY FOR CHAIN-LINK FENCE, 1.8 m**  
 STA. 60+914.800 LT (1EA)



FILE NAME = u:\5116\vaot\contr\act4\vt\tp23.dgn  
 DATE/TIME = 08 SEP 2000  
 USER = 1459

CONSTRUCT BITUMINOUS CONCRETE GUTTERS BY PLACING 1-50 mm TYPE IV LIFT ITEM 616.47

STATE OF VERMONT

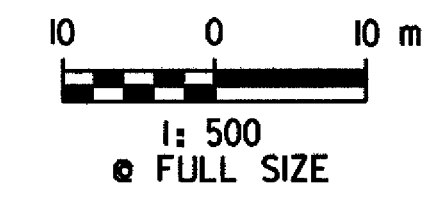
STATE OF VERMONT

AREA TO BE COLD PLANNED AND PAVED

**DATUM**

VERTICAL	NAVD 88
HORIZONTAL	NAD 83 (1992)

NOTES:  
 1. SEE DWG. NO. SLP-1 TO SLP-3 FOR PROPOSED STREET LIGHTING PLANS.  
 2. ALL COLD PLANNED AREAS SHALL BE PAVED WITH A LEVELING COURSE FOR THE TRAVELING PUBLIC.



**PLAN**

SURVEYED BY	C.H.A. & V.S.E.	DATE	12/93
DESIGNED BY	D.E.G.	DATE	9/00
DRAWN BY	J.S.L.	DATE	9/00
CHECKED BY	T.P.K.	DATE	9/00
DESIGN FILE NO.	5116\vaot\vt\tp23.dgn		
PROJ. NAME	BENNINGTON - HOOSICK D.P.L. 0146(1) C/4		
PROJ. NO.	P.L.N. 1306.60		
DWG NO. P-3	SHEET 81 OF 385		