

DATUM	
VERTICAL	NAVD 88
HORIZONTAL	NAD 83 (1992)

STOP VT. ROUTE 9 H.C.I.
 BEGIN RAMP X STA. X10+000.000 =
 BEGIN RAMP Y STA. Y10+000.000 =
 STA. 16+978.091

BEGIN RAMP C STA. C10+000.000 =
 P.O.C. STA. 16+978.085

END ROADWAY
 END BENNINGTON - HOOSICK D.P.I. 0146(1) C/4
 BEGIN BENNINGTON - HOOSICK D.P.I. 0146(1) C/6
 STA. B10+064.800 = W.B. STA. 17+305.027

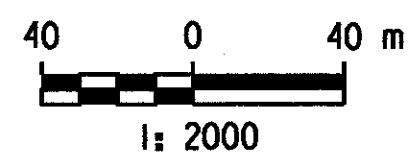
BEGIN RAMP B STA. B10+000.000 =
 ULTIMATE W.B. STA. 17+359.827
 RESUME VT. ROUTE 9

END RAMP D STA. D10+291.827 =
 ULTIMATE E.B. STA. 17+359.765
 RESUME VT. ROUTE 9

END COLD PLANING & PAVING
 STA. 61+244.000

END BRIDGE
 RESUME ROADWAY
 STA. X10+046.006 &
 STA. Y10+046.006

BEGIN COLD PLANING & PAVING
 STA. 60+640.000



GENERAL PLAN	SURVEYED BY	C.H.A. & V.S.E.	DATE	12/93
	DESIGNED BY	D.E.G.	DATE	9/00
	DRAWN BY	J.N.	DATE	9/00
	CHECKED BY	T.P.K.	DATE	9/00
DESIGN FILE NO.		G2.DGN		
PROJ. NAME		BENNINGTON - HOOSICK D.P.I. 0146(1) C/4		
PROJ. NO.		P.J.N. 1306.60		
DWG NO. G-1		SHEET 71 OF 385		