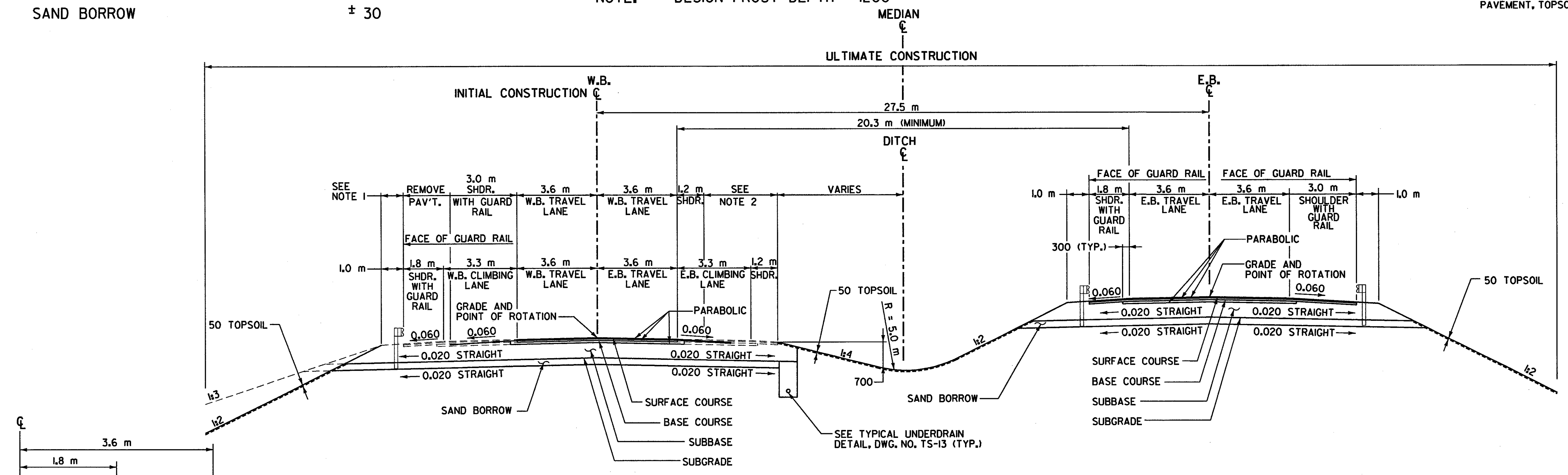


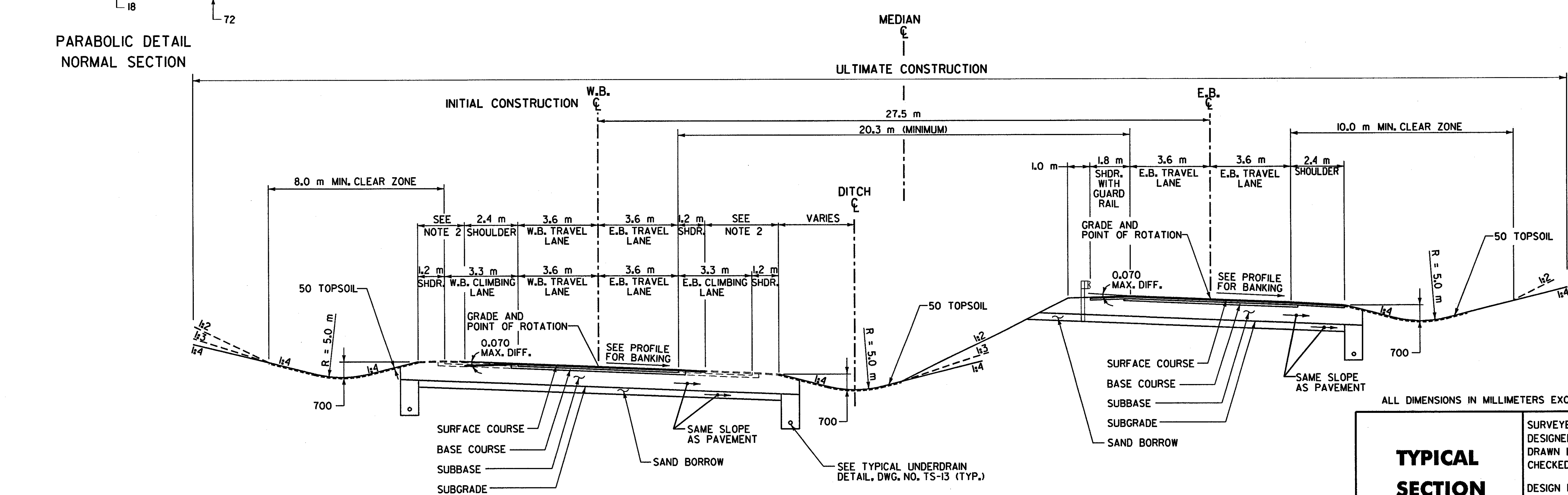
TYPICAL SECTIONS - ULTIMATE CONSTRUCTION WITH CLIMBING LANE (INITIAL CONSTRUCTION)

MATERIAL ITEM	THICKNESS TOLERANCE	THICKNESS	DESCRIPTION
PAVEMENT COURSES (TOTAL DEPTH)	± 5	130	SUPERPAVE BITUMINOUS CONCRETE PAVEMENT (PG 58-28) (50 TYPE III S, 80 TYPE II S)
BASE COURSES (TOTAL DEPTH)	± 10	100	BASE COURSE, SUPERPAVE BITUMINOUS CONCRETE (PG 58-28), TYPE I S
SUBBASE	± 30	600	SUBBASE OF CRUSHED GRAVEL (COARSE GRADED)
SAND BORROW	± 30	400	SAND BORROW
		SHOULDERS: 130	SUPERPAVE BITUMINOUS CONCRETE PAVEMENT (PG 58-28) (50 TYPE III S, 80 TYPE II S)
		NOTE:	DESIGN FROST DEPTH - 1200

- NOTES:**
- ELIMINATE TOPSOIL AND SEEDING BEHIND GUARDRAIL TO SUBGRADE CATCH POINT.
 - FOR DETAILS OF INITIAL CONSTRUCTION TYPICAL SECTIONS, SEE DWG. NO. TS-3 TO DWG. NO. TS-13.
 - FOR ULTIMATE CONSTRUCTION, REMOVE PAVEMENT, TOPSOIL AND SEED.



NORMAL SECTION



BANKED SECTION

PARABOLIC DETAIL
NORMAL SECTION

ALL DIMENSIONS IN MILLIMETERS EXCEPT WHERE OTHERWISE INDICATED.

TYPICAL SECTION SHEET

SURVEYED BY	C.H.A. & V.S.E.	DATE	12/93
DESIGNED BY	D.E.G.	DATE	9/00
DRAWN BY	J.N.	DATE	9/00
CHECKED BY	T.P.K.	DATE	9/00
DESIGN FILE NO.	/5116/VAOT/TS-2.DGN		
PROJ. NAME	BENNINGTON - HOOSICK D.P.I. 0146(I) C/4		
PROJ. NO.	P.I.N. 1306.60		
DWG NO. TS-2	SHEET 58 OF 385		

FILE NAME = F:\5116\vaot\contract4\ts-2.dgn
 DATE/TIME = 07 SEP 2000
 USER = 1459