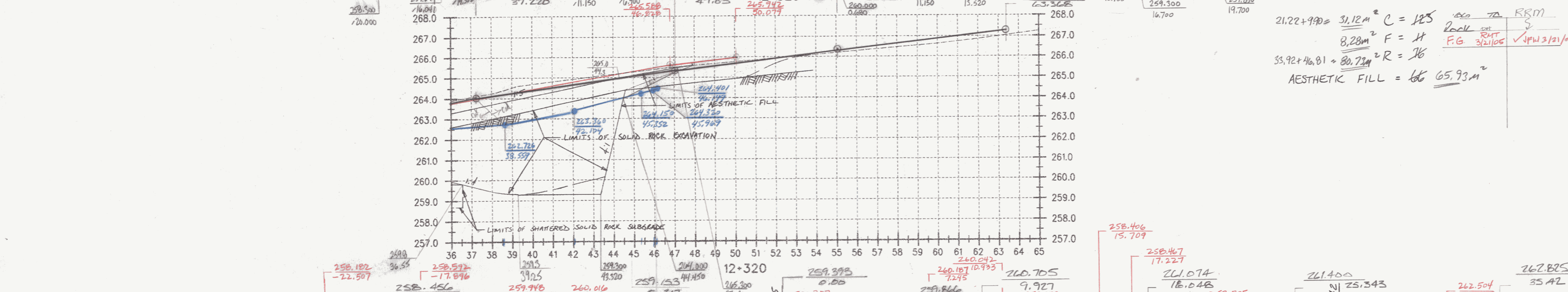
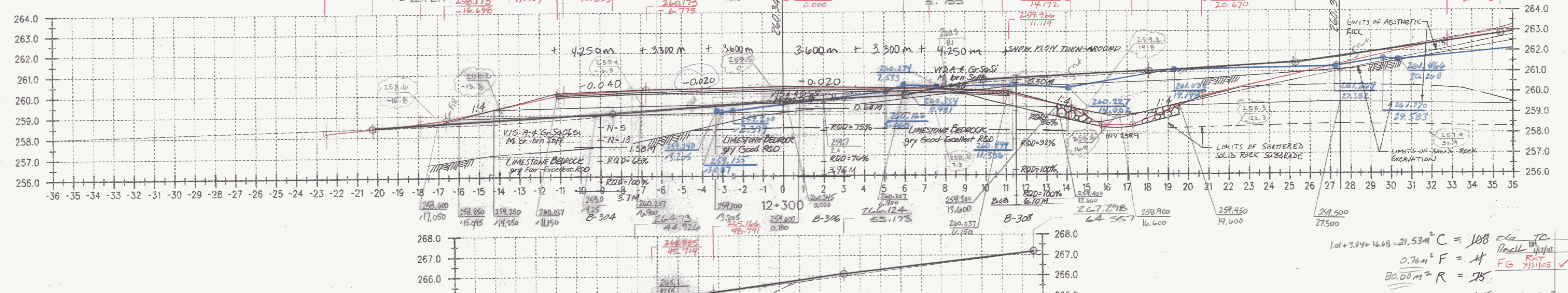


$21.22 + 990 = 31.12 \text{ m}^2 \quad C = 125$   
 $8.28 \text{ m}^2 \quad F = 4$   
 $35.92 + 46.81 = 80.73 \text{ m}^2 \quad R = 16$   
 AESTHETIC FILL =  $66 \text{ } 65.93 \text{ m}^2$



$1.01 + 3.84 + 16.68 = 21.53 \text{ m}^2 \quad C = 108$   
 $0.76 \text{ m}^2 \quad F = 4$   
 $80.00 \text{ m}^2 \quad R = 75$   
 AESTHETIC FILL =  $64 \text{ } 64.44 \text{ m}^2$



**DATUM**  
 VERTICAL NAVD 88  
 HORIZONTAL NAD 83 (1992)

ALL DIMENSIONS IN MILLIMETERS EXCEPT AS INDICATED  
  
 H 1:100  
 V 1:100

SURVEYED BY C.H.A. & V.S.E. DATE \_\_\_\_\_  
 DRAWN BY J.S.L. DATE \_\_\_\_\_  
 SQUAD LEADER T.P.K.  
 DESIGN FILE NO. n/a  
 PARM FILE \_\_\_\_\_ DATE PLOTTED \_\_\_\_\_  
 PROJ. NAME BENNINGTON - HOOSICK  
 D.P.I. 0146(1) C13  
 PROJ. NO. P.I.N. 1305.60.201  
 SHEET 314 OF 473 SHEETS