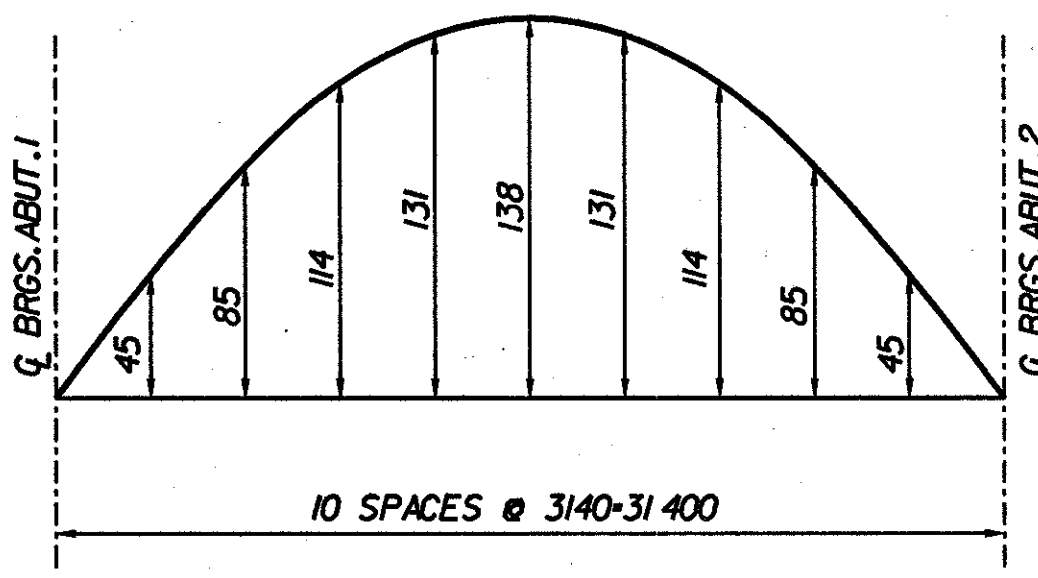
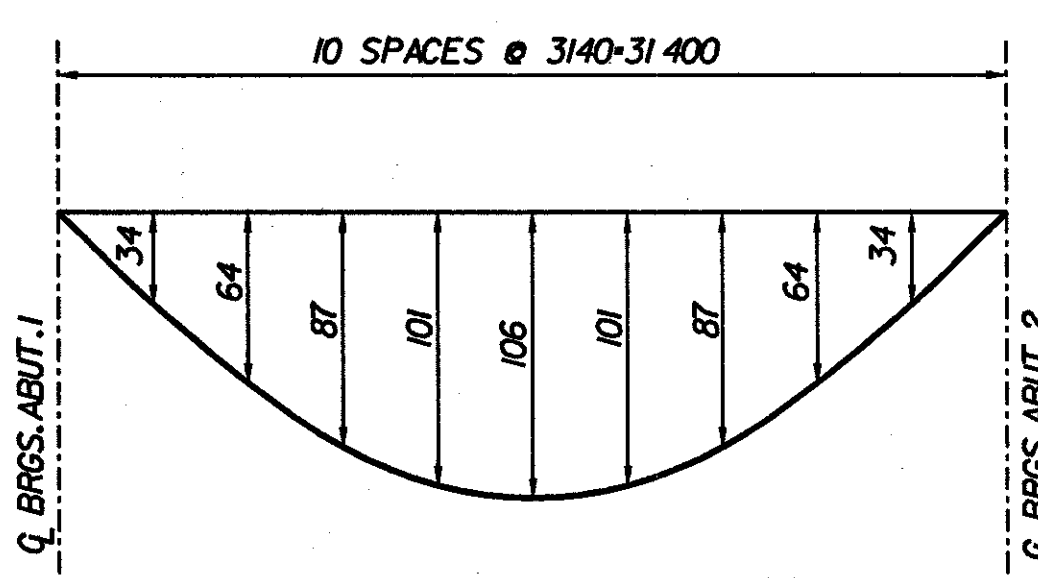


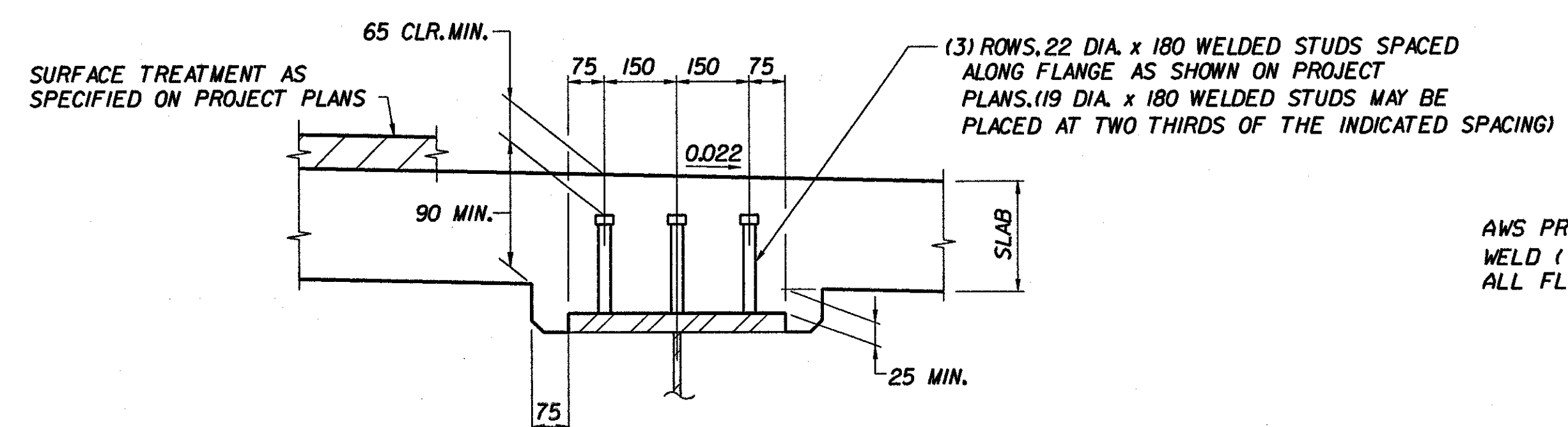
GIRDER ELEVATION
N.T.S.



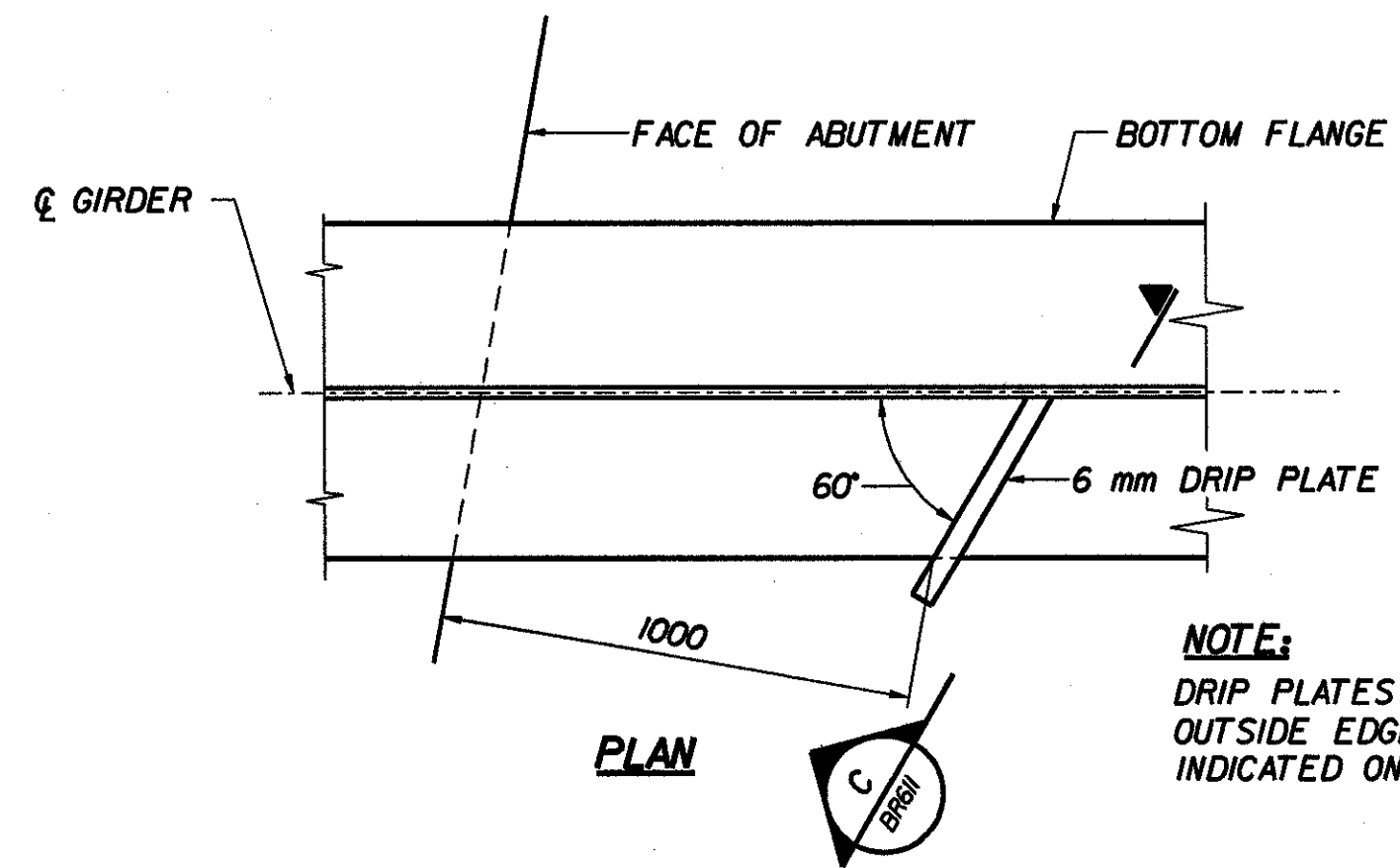
CAMBER DIAGRAM
HORIZ. 1:250
VERT. 1:25



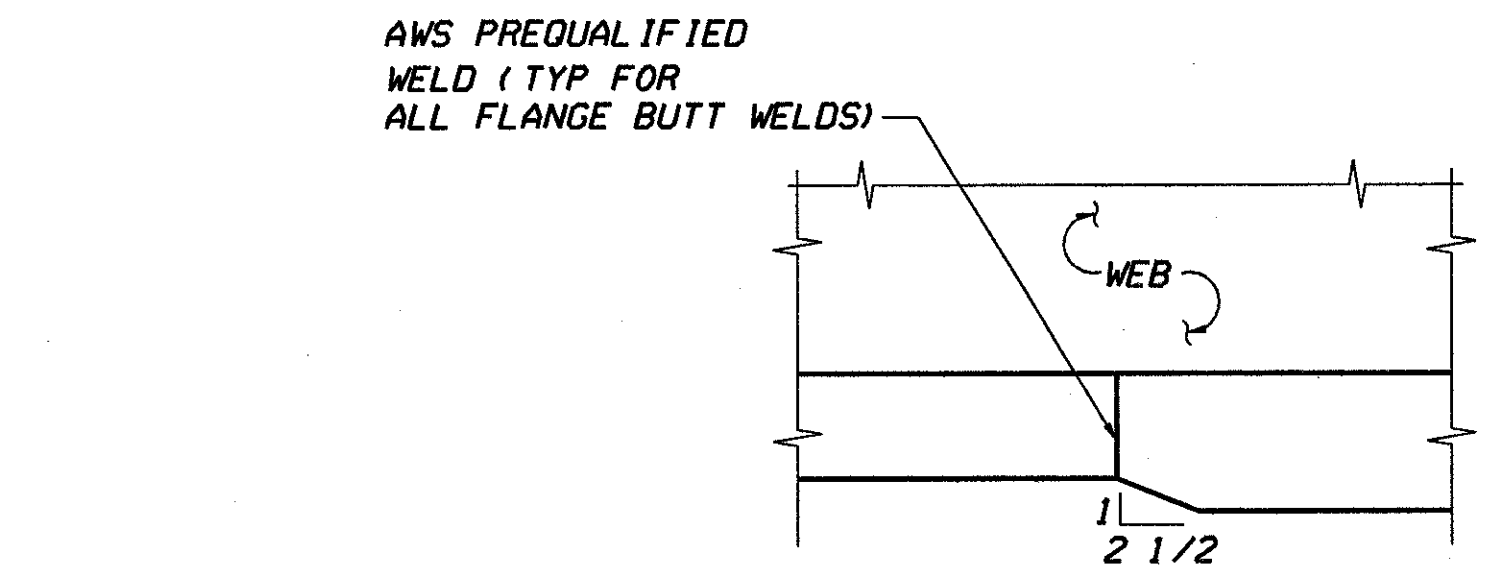
DEAD LOAD DEFLECTION DIAGRAM
HORIZ. 1:250
VERT. 1:25



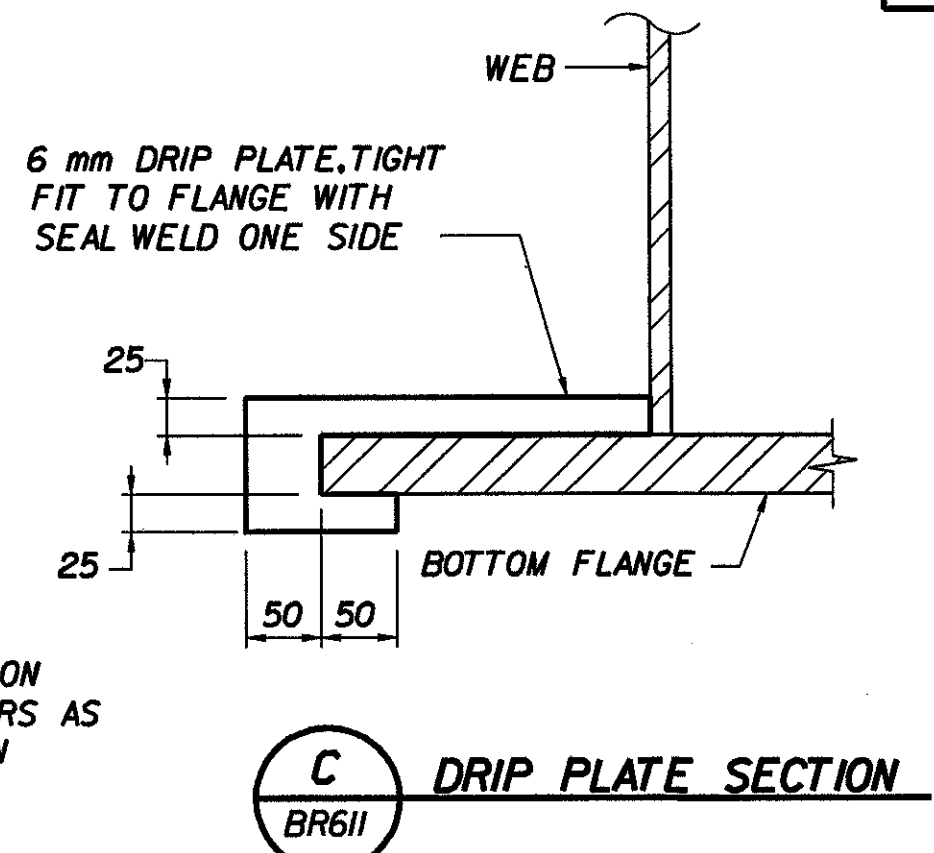
Z TYPICAL GIRDER HAUNCH & SHEAR CONNECTOR DETAIL
BR607
BR611



S DRIP PLATE DETAILS
BR610
BR611



Y BOTTOM FLANGE TAPER DETAIL
N.T.S.
BR611



C DRIP PLATE SECTION
BR611

CVN - DENOTES CHARPY V-NOTCH TEST REQUIRED, SEE NOTE 8.

- NOTES:**
1. ALL STRUCTURAL STEEL SHALL BE AASHTO M270M GR 345W UNLESS OTHERWISE NOTED.
 2. ALL BEARING STIFFENER PLATES SHALL BE VERTICAL IN THEIR FINAL ERECTED POSITION.
 3. ENDS OF GIRDERS SHALL BE FABRICATED SO THAT THE ENDS WILL BE VERTICAL UNDER FULL DEAD LOAD.
 4. TOP OF STUDS SHALL EXTEND ABOVE BOTTOM LAYER OF DECK REINFORCEMENT.
 5. IN AREAS OF UNPAINTED STEEL CONTACT SURFACES OF BOLTED CONNECTIONS SHALL BE BLAST CLEANED IF RUSTED BEFORE CONNECTION IS MADE. IN AREAS OF PAINTED STEEL PRIMER SHALL REMAIN ON THE SURFACES OF STEEL CONNECTION CONTACTS.
 6. FOR CROSSFRAME DETAILS, SEE SHEET BR612.
 7. BUTT WELDED FLANGE PLATES SHALL BE OFFSET 1600 mm FROM BUTT WELDED WEB PLATES.
 8. ALL MEMBERS OR PLATES (AND ONLY THOSE MEMBERS OR PLATES) IDENTIFIED WITH THE CVN DESIGNATION MUST MEET THE CHARPY V-NOTCH REQUIREMENTS FOR MAIN MEMBERS AS INDICATED IN SECTION 714 OF THE STANDARD SPECIFICATIONS.
 9. THE GIRDERS AND ALL OTHER STEEL COMPONENTS, INCLUDING CROSSFRAMES AND CONNECTION PLATES, THAT ARE A DISTANCE OF 260 m FROM THE END OF THE GIRDER (ABUTMENT #2 ONLY) SHALL BE COATED WITH A PROTECTIVE SYSTEM ACCORDING TO SUPPLEMENTAL SECTION 513.
 10. SHOP DRAWINGS AND BEAM PROFILES SHALL BE SENT TO DALE GOZALKOWSKI, CLOUGH HARBOUR & ASSOCIATES, 111 WINNERS CIRCLE, P.O. BOX 5269, ALBANY NY, 12205-0269 FOR APPROVAL.

| STATE OF VERMONT AGENCY OF TRANSPORTATION | | | |
|--|--------------------|--------------------------|----------------|
| Town Of | BENNINGTON | Bridge No. | BR600 |
| Highway No. | VT. RTE. 9 | Log Sta. | |
| | | Surv. Sta. | 15+170 |
| VT. RTE. 9 OVER AUSTIN HILL ROAD | | | |
| GIRDER ELEVATION AND DETAILS | | | |
| Designed By | M. GOGUEN | Drawn by | B. WEATHERBY |
| Checked By | Date | Bridge Design Supervisor | |
| | P. PERKINS 11/01 | M. OLSTAD | Date 11/01 |
| PROJECT | BENNINGTON-HOOSICK | PROJECT NO. | D.P.J. 0146(1) |
| I.G.C. Info. | | | |
| Bridge Sheet No. | BR611 | Sheet | 273 OF 473 |

FILE NAME = \\19273\151-688\gr-dtbl.rlt
DATE/TIME = 10/11/2001
USER = 664