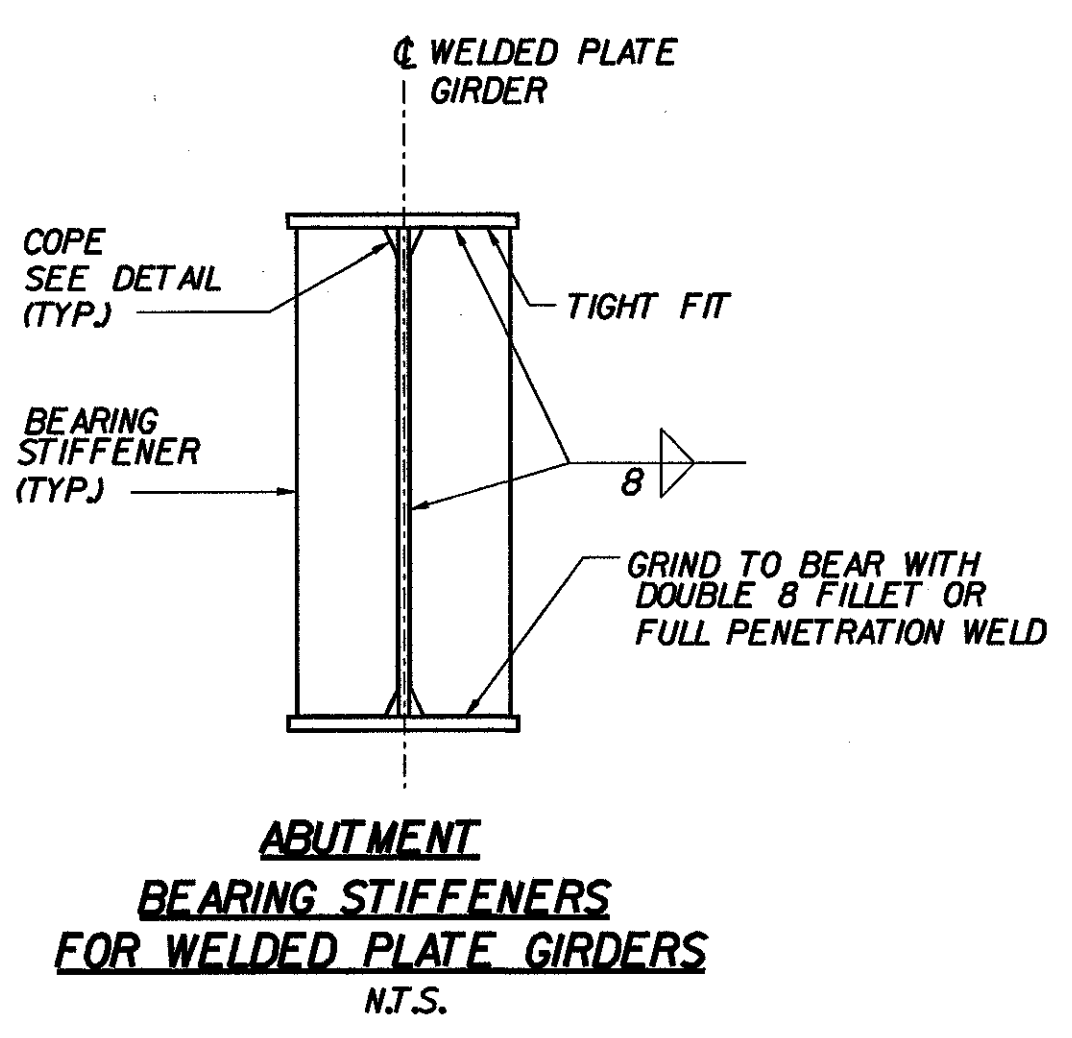
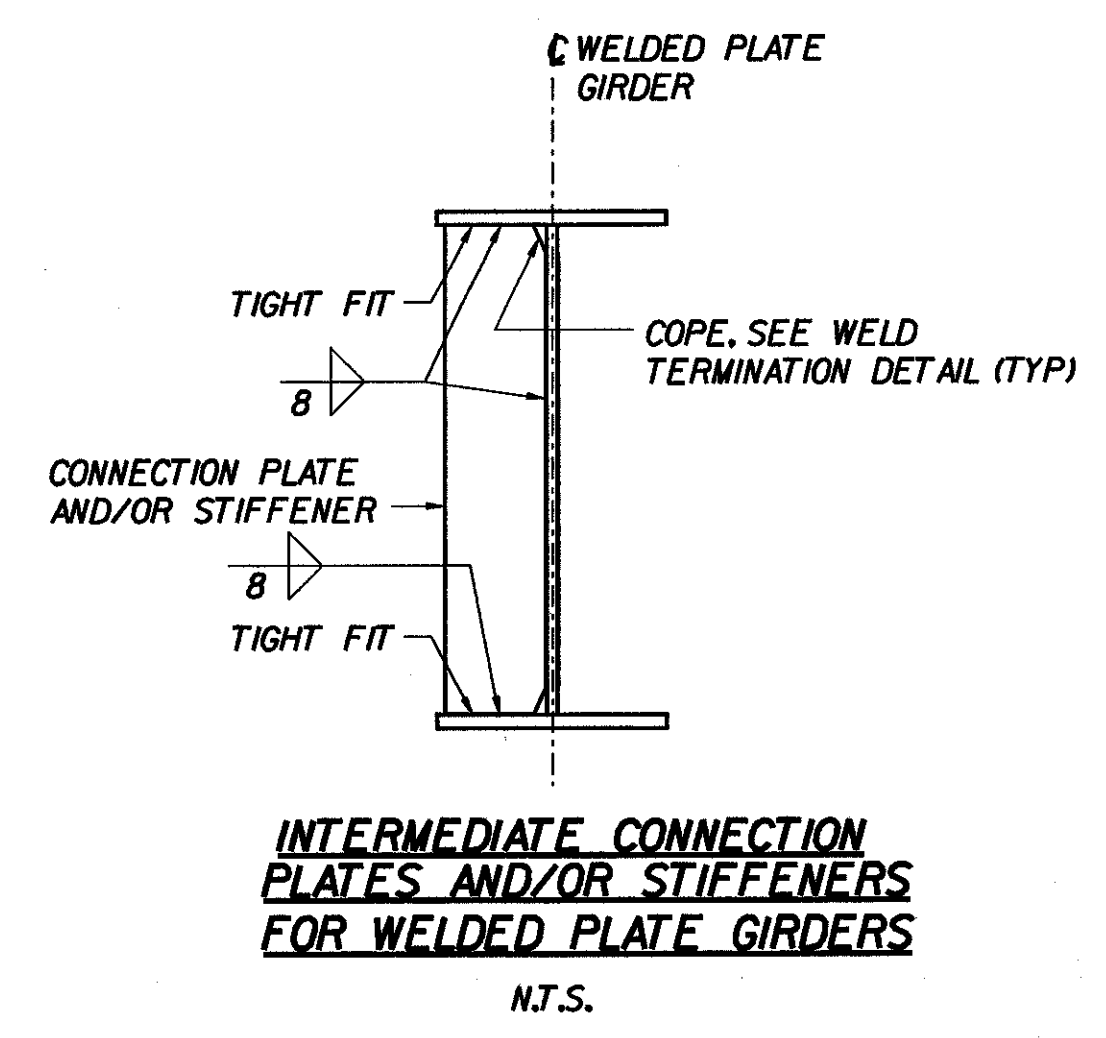


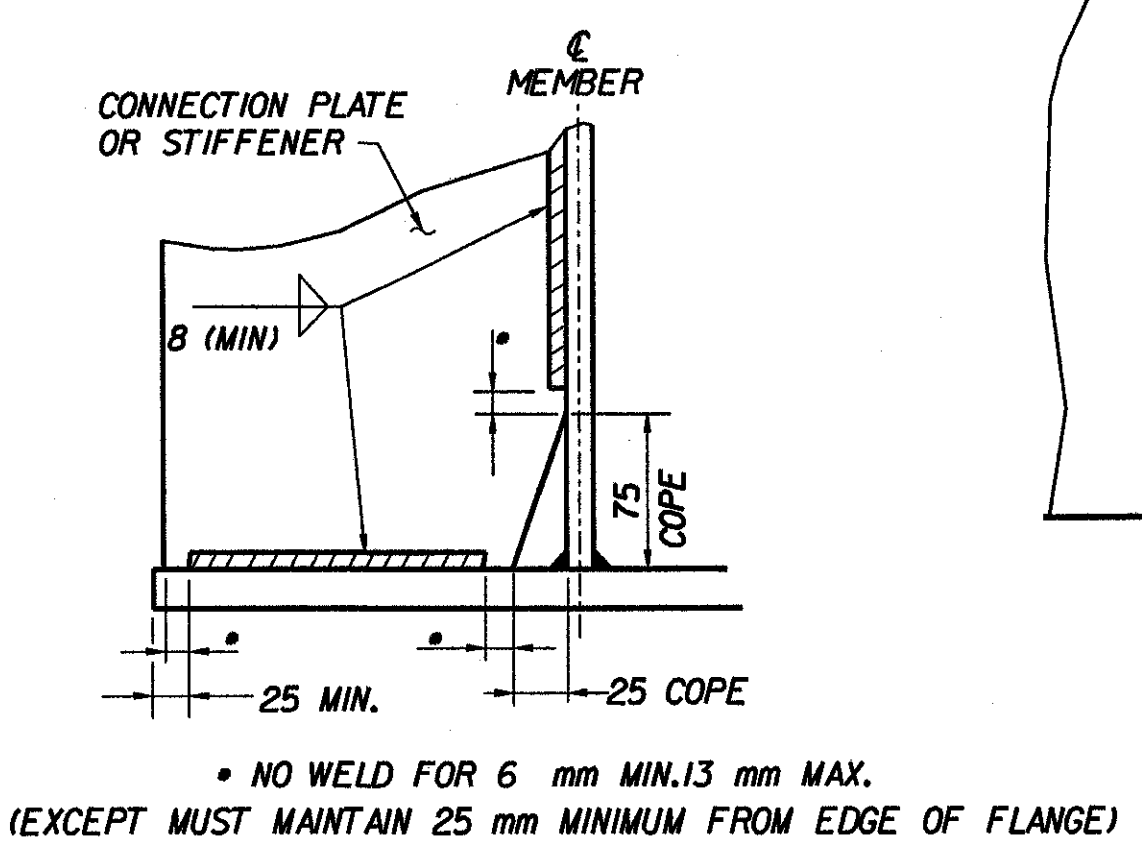
FRAMING PLAN
1:100
2 m 0 2 m



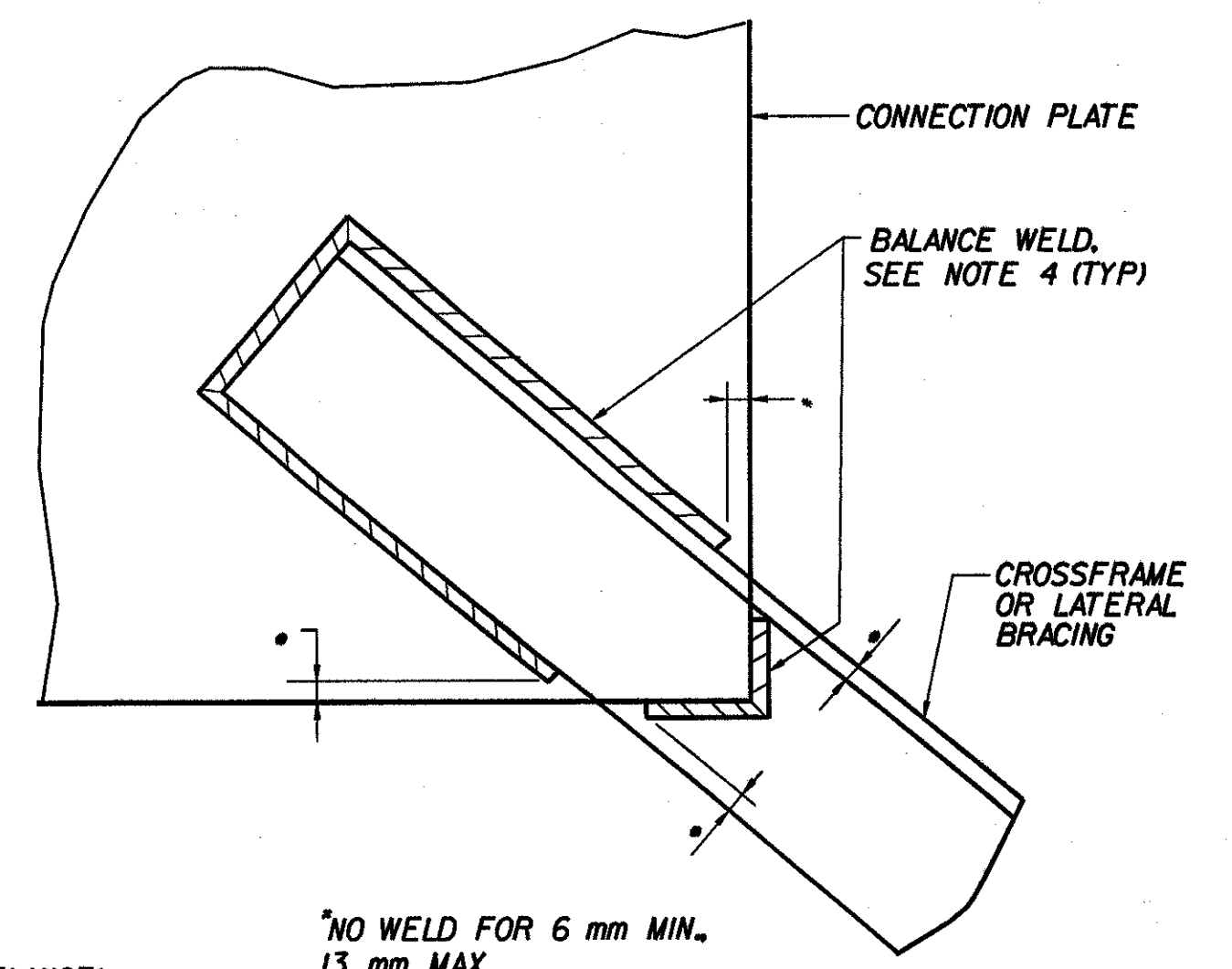
ABUTMENT BEARING STIFFENERS FOR WELDED PLATE GIRDERS
N.T.S.



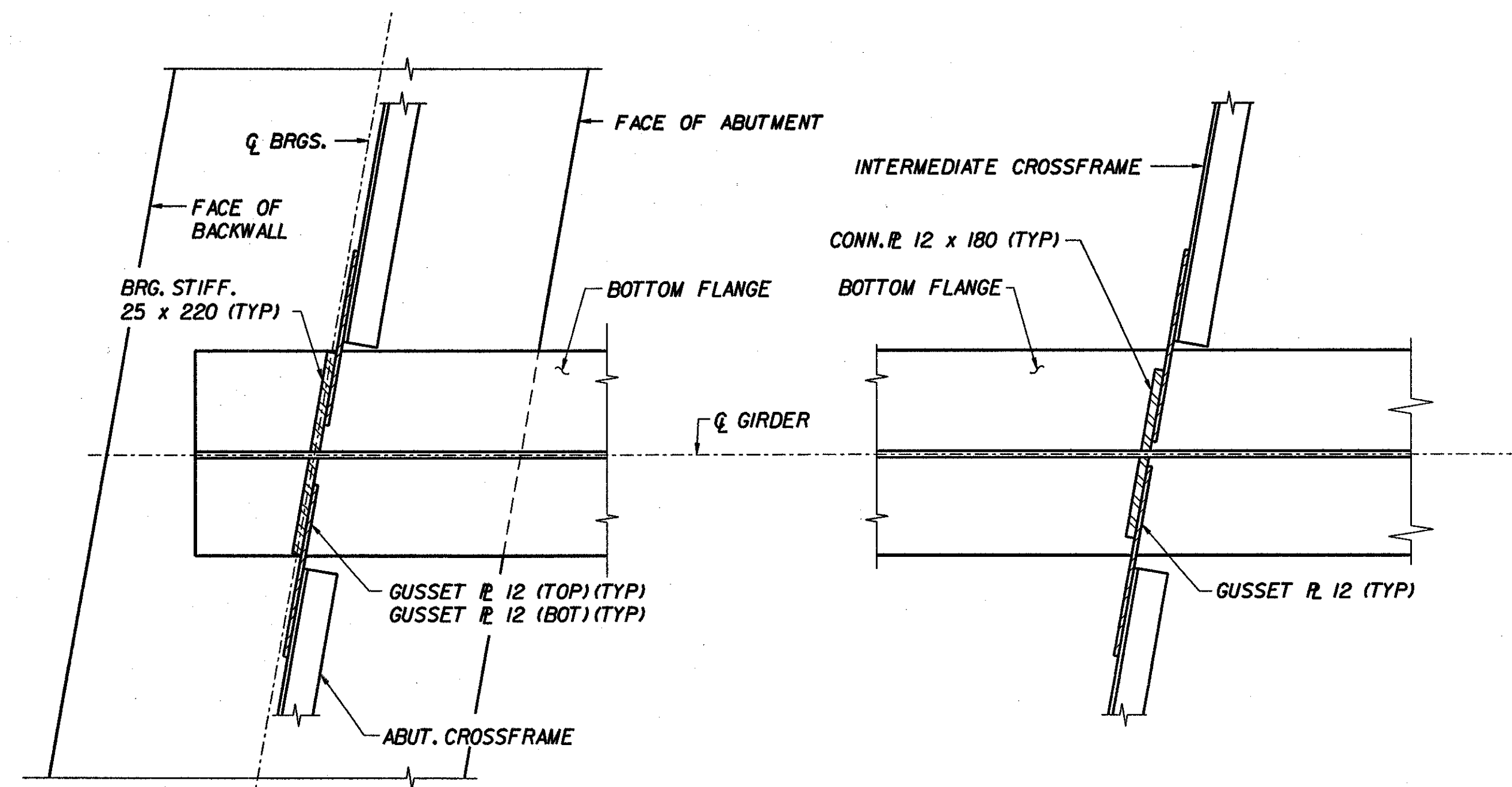
INTERMEDIATE CONNECTION PLATES AND/OR STIFFENERS FOR WELDED PLATE GIRDERS
N.T.S.



WELD TERMINATION AND COPING DETAILS FOR STEEL MEMBERS
N.T.S.



WELD LOCATION DETAIL AT CROSSFRAMES AND LATERAL BRACING
N.T.S.



X **BR610** **DETAIL-END CONN. PLATES**

Y **BR610** **DETAIL-INTERMEDIATE CONN. PLATES**

CROSSFRAME CONNECTIONS

1:10
2 m 0 2 m

NOTES:

1. FOR STRUCTURAL STEEL NOTES, SEE SHT. BR611.
2. FOR CROSSFRAME DETAILS, SEE SHT. BR612.
3. FOR GIRDER ELEVATION AND DETAILS, SEE SHT. BR611.
4. THE LENGTH OF WELDS ON EACH SIDE OF THE ANGLE SHALL BE PROPORTIONED TO MINIMIZE ECCENTRICITIES IN THE CONNECTION.

STATE OF VERMONT AGENCY OF TRANSPORTATION

Town Of	BENNINGTON	Bridge No.	BR600
Highway No.	VT. RTE. 9	Log Sta.	
		Surv. Sta.	15+170
VT. RTE. 9 OVER AUSTIN HILL ROAD			
FRAMING PLAN			
Designed By	M. GOGUEN	Drawn by	D. ADDARIO/B. WEATHERBY
Checked By	N. DEMOS	Bridge Design Supervisor	M. OLSTAD
	Date 11/01	Date	11/01
PROJECT	BENNINGTON-HOOSICK	PROJECT NO.	D.P.J. 0146(1)
I.G.C. Info.			
Bridge Sheet No.	BR610	Sheet	272 OF 473