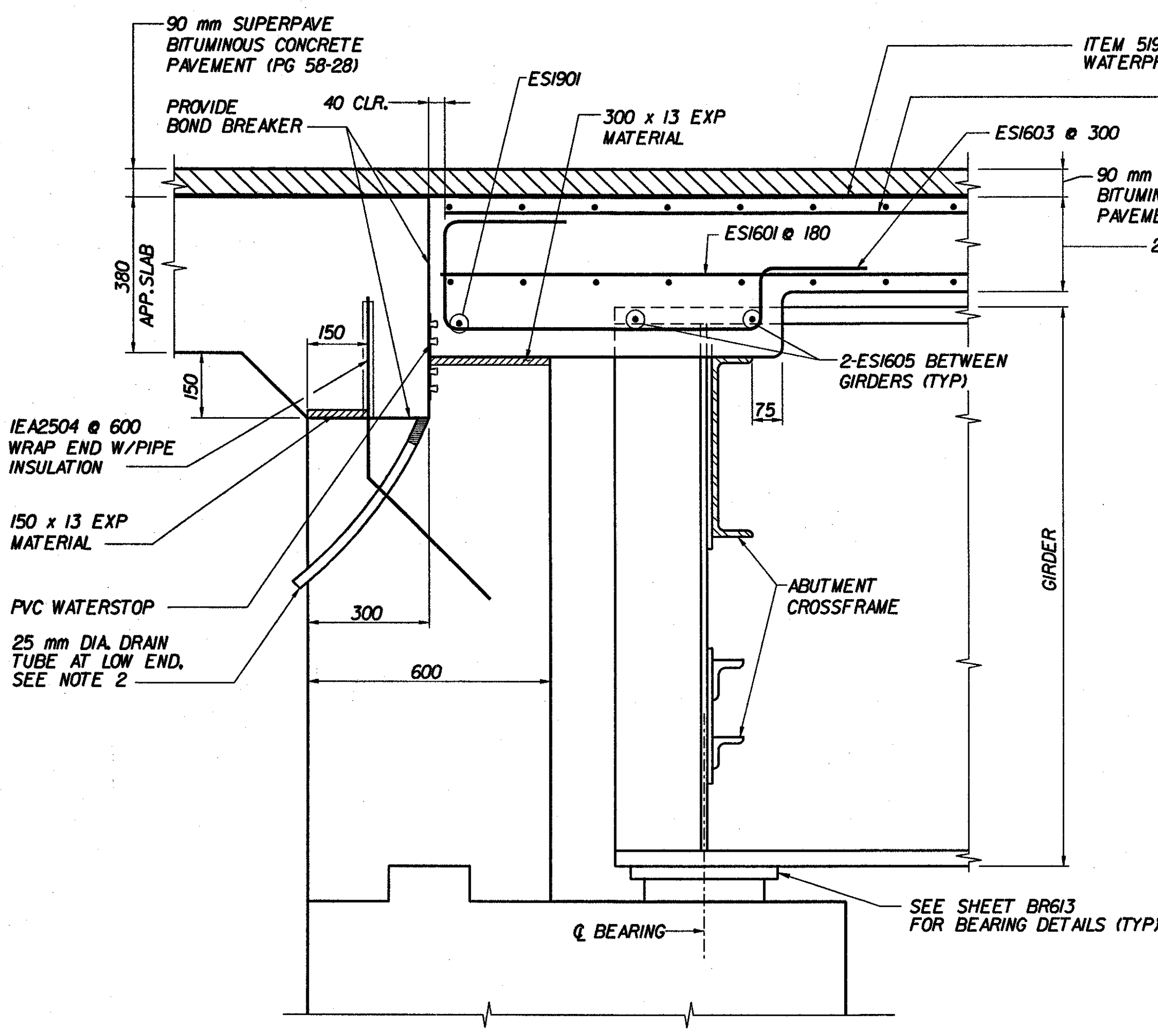
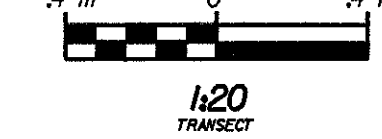
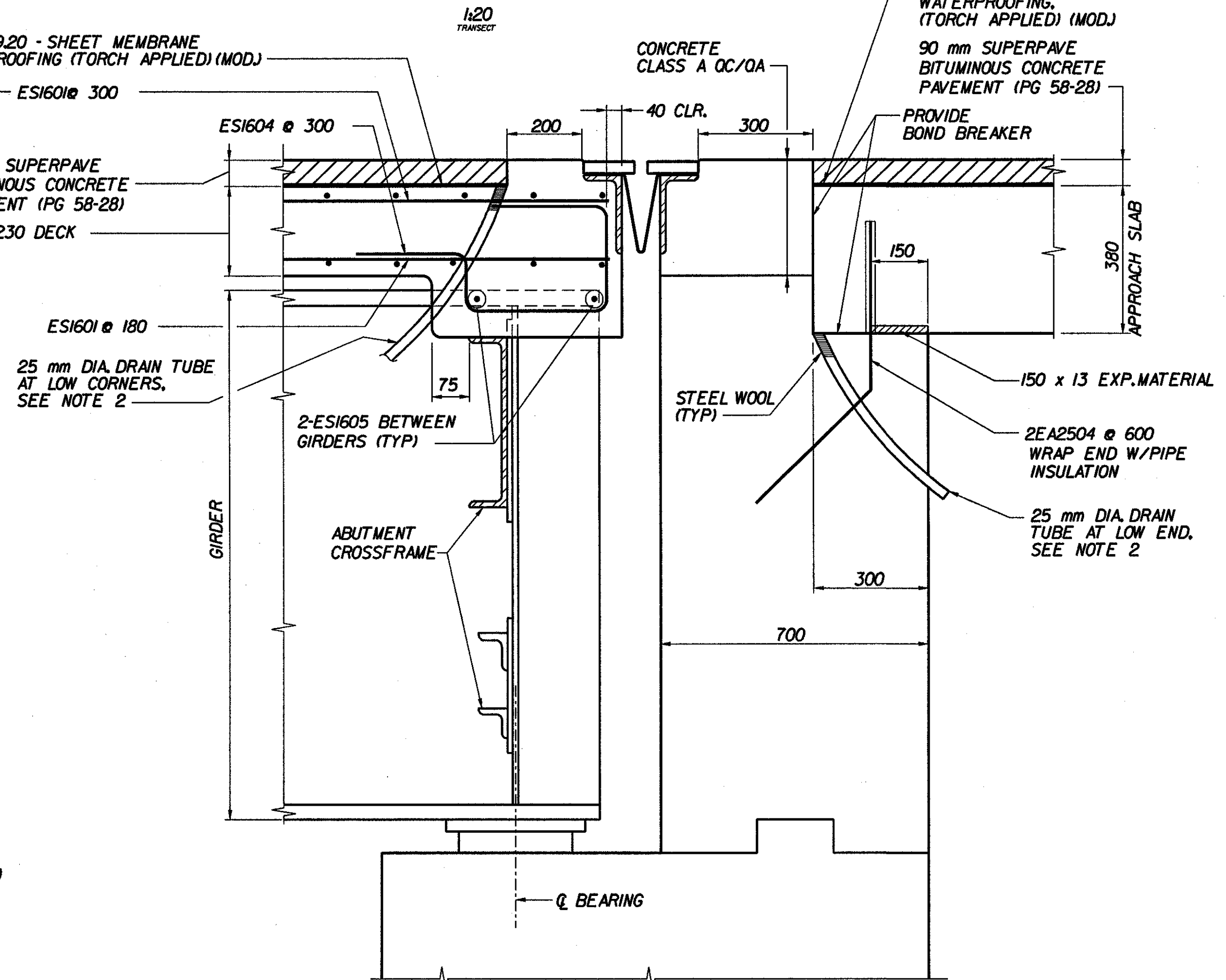


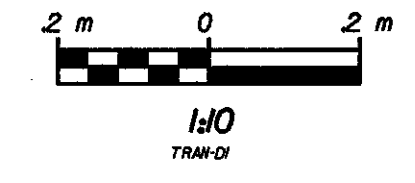
**TYPICAL BRIDGE SECTION**



**FIXED END - ABUTMENT 1  
TYPICAL SECTION NORMAL TO ABUTMENT**



**EXPANSION END - ABUTMENT 2  
TYPICAL SECTION NORMAL TO ABUTMENT**



**NOTES:**

1. ALL SUPERSTRUCTURE REINFORCING STEEL SHALL BE EPOXY COATED.
2. THE COST OF 25 mm DIA. PLASTIC TUBE IS SUBSIDIARY TO ITEM 501.221 "CONCRETE CLASS A QC/OA". CARE SHALL BE TAKEN TO KEEP TUBE CLEAR DURING CONSTRUCTION. THE TOP OF THE DRAIN TUBES SHALL BE TEMPORARILY PLUGGED WITH STEEL WOOL AND RECESSED 6 mm BELOW THE TOP OF THE CONCRETE AND THE BOTTOM LOCATED 150 mm BELOW THE BOTTOM FLANGE OF THE NEAREST GIRDER (LOW SIDE OF BRIDGE). THE TOP OF THE PLASTIC TUBE SHALL BE DRILLED OPEN AFTER CONCRETE PLACEMENT. THE DRAIN TUBES SHALL BE FASTENED TO THE GIRDERS USING A METHOD APPROVED BY THE ENGINEER. TUBING WILL MEET THE REQUIREMENTS OF SUBSECTION 740.D-PLASTIC PIPE, FLEXIBLE.
3. FOR HEADER AND EXPANSION JOINT DETAILS, SEE SHT. BR615.
4. FOR APPROACH SLAB REINFORCEMENT AND BACKWALL DOWELS, SEE SHT. BR618.
5. FOR ABUTMENT REINFORCING SEE SHTS. BR619 - BR623.
6. SEE TYPICAL CURB SECTION, SHT. BR609.
7. FOR WATERSTOP DETAILS, SEE SHT. BR618.

**STATE OF VERMONT  
AGENCY OF TRANSPORTATION**

Town Of	BENNINGTON	Bridge No.	BR600
Highway No.	VT. RTE. 9	Log Sta.	
VT. RTE. 9 OVER AUSTIN HILL ROAD		Surv. Sta.	15+170
<b>TYPICAL BRIDGE SECTION</b>			
Designed By	M. GOGUEN	Drawn by	D. ADDARIO/B. WEATHERBY
Checked By	P. PERKINS 11/01	Bridge Design Supervisor	M. OLSTAD Date 11/01
PROJECT	BENNINGTON-HOOSICK	PROJECT NO.	D.P.J. 0146(1)
I.G.C. Info.			
Bridge Sheet No.	BR607	Sheet	269 OF 473